

PRODUCT INFORMATION PACKET

Model No: 810503.00

Catalog No: 810503.00

Encoder Motors, TEBC - Axial, 200 HP, 3 Ph, 60 Hz, 460 V, 1790 RPM, 445T Frame



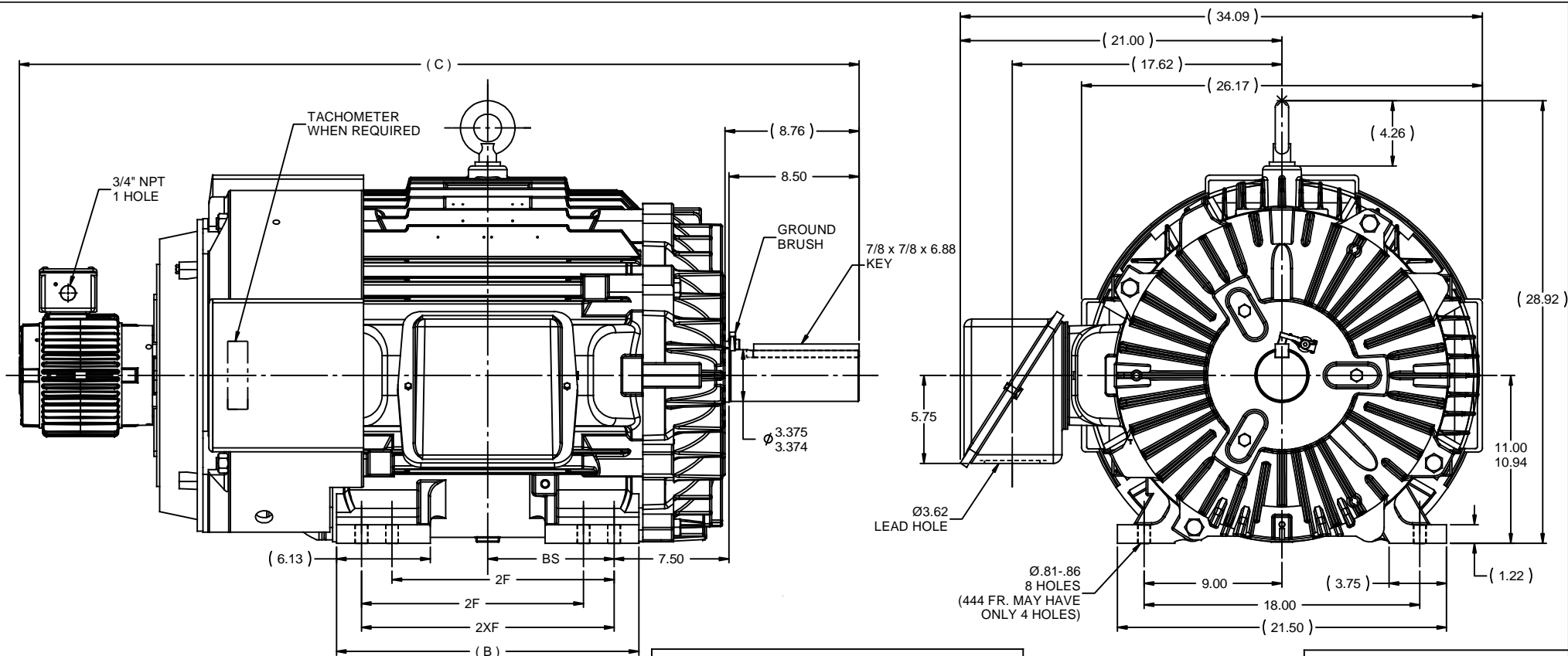
Regal and are trademarks of Regal Rexnord Corporation or one of its affiliated companies.
©2022 Regal Rexnord Corporation, All Rights Reserved. MC017097E

Nameplate Specifications

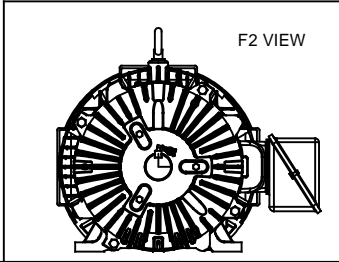
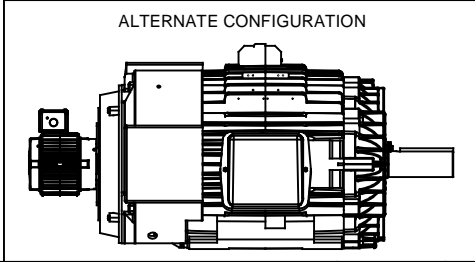
Output HP	200 Hp	Output KW	149.0 kW
Frequency	60 Hz	Voltage	460 V
Current	230.0 A	Speed	1790 rpm
Service Factor	1	Phase	3
Efficiency	95 %	Power Factor	86
Duty	Continuous	Insulation Class	H
Design Code	INV	KVA Code	K
Frame	445T	Enclosure	Totally Enclosed Blower cooled - Axial
Thermal Protection	No Protection	Ambient Temperature	40 °C
Drive End Bearing Size	6318	Opp Drive End Bearing Size	6316
UL	Recognized	CSA	Y
CE	N	IP Code	43
Number of Speeds	1		

Technical Specifications

Electrical Type	Squirrel Cage Inverter Duty	Starting Method	Inverter Only
Poles	4	Rotation	Reversible
Resistance Main	.016 Ohms	Mounting	Rigid Base
Motor Orientation	Horizontal	Drive End Bearing	Ball
Opp Drive End Bearing	Ball	Frame Material	Cast Iron
Shaft Type	T	Overall Length	54.85 in
Frame Length	20.25 in	Shaft Diameter	3.375 in
Shaft Extension	8.5 in	Assembly/Box Mounting	F1/F2 CAPABLE
Inverter Load	CONSTANT 2000:1		
Connection Drawing	A-EE7300T-LE	Outline Drawing	B-SS550049LE-2025



NOTES:
 1. CONDUIT BOX CAN BE ROTATED IN 90° STEPS.
 2. CONDUIT BOX CAN BE MOUNTED ON OPPOSITE SIDE BY REMOVING BRACKETS AND TURNING FRAME 180°.
 3. NAMEPLATES TO BE READ FROM CONDUIT BOX SIDE OF MOTOR.



							TOLERANCES UNLESS SPECIFIED		ELECTRIC MOTORS GEARMOTORS AND DRIVES		DRAWN HLB 11-21-2003	
							DEC	INCHES			CHK JHL 11-21-2003	
							x	±.1	TITLE OUTLINE - TFN		APPR JES 11-21-2003	
							.XX	±.03	440T FR. - TEBC - AXIAL BLOWER		SCALE 1:6.25	
1 UPDATED FRAME, ADDED ALT. CONFIG. & F2 VIEWS							XXX	±.005	REF		FMF CN 37491	
PER ISAAC 09-5049 AND MU94218							MH	±.0005	MATL		PAGE OF	
NO REVISION							CHK	ANG ±1/2°	FINISH		REV	
BY & DATE							RFP	11-21-2003	PREV		SIZE	DRAWING NO
THIRD ANGLE PROJECTION							NETWORK FILE NAME		SS550049LE		B	SS550049LE
DASH	FRAME	B	C	2F	2XF	BS						
1825	444T	17.75	52.85	14.50	- - -	7.25						
2025	444/445T	19.75	54.85	14.50	16.50	8.25						

THREE PHASE - SINGLE VOLTAGE MOTOR
CONDUIT BOX @ 'A'

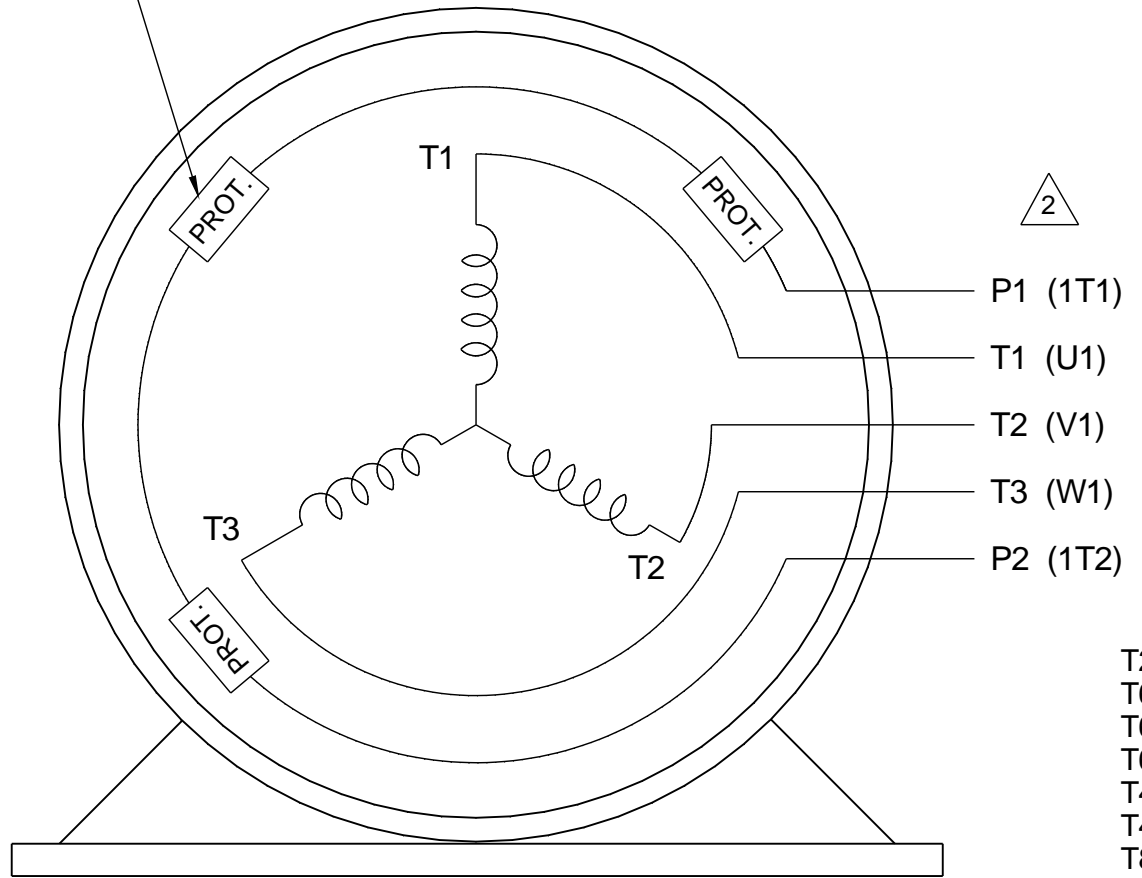
3 THERMO - PROTECTORS
CONNECTED IN SERIES

TO REVERSE ROTATION:
INTERCHANGE ANY TWO LINE
LEAD CONNECTIONS

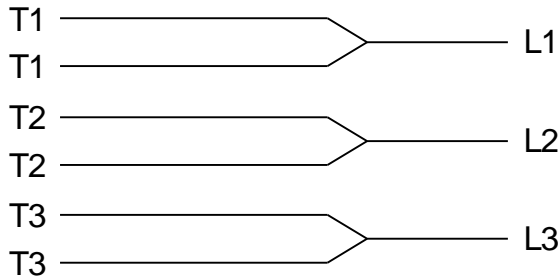
NOTE FOR FACTORY USE ONLY:

TO SURGE TEST:

FOR 3 LEAD COMMON CONNECT:
CONNECT P1 TO T1, THEN P2 TO L1
FOR 6 LEAD COMMON CONNECT:
CONNECT P1 TO BOTH T1
THEN P2 TO L1



IF MOTOR HAS MULTIPLE T'S PER LEAD
CONNECT TOGETHER LIKE T'S

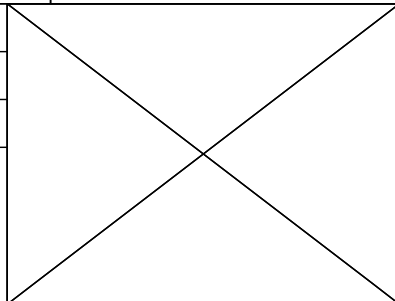


A-9806 DECAL


- T2BM
- T6AW
- T6AL
- T6Z
- T4EG
- T4BF
- T8A
- T6H
- T6A
- T4AX
- T4A
- T2A
- T2F

VIEW OF TERMINAL END

DRAWING REVISION E	REVISION BY MSG	DATE 10-19-2016
ECO ECO-0111093	APPROVED BY TB	DATE 10-19-2016
ECO DESCRIPTION REDRAWN - REVISED TEXT		
<small>COPYRIGHT REGAL BELOIT AMERICA, INC. ALL RIGHTS RESERVED. PROPRIETARY AND CONFIDENTIAL INFORMATION - THIS DOCUMENT IS THE PROPERTY OF REGAL BELOIT AMERICA, INC. ('OWNER') AND CONTAINS OWNER'S PROPRIETARY INFORMATION. ANY PERSON, CORPORATION OR OTHER FIRM RECEIVING IT IS DEEMED, BY RECEIVING IT, TO AGREE THAT IT, AND/OR ANY PART OF IT, SHALL NOT BE DISCLOSED TO ANY PERSON, CORPORATION OR OTHER ENTITY, DUPLICATED, AND/OR USED, EXCEPT AS EXPRESSLY APPROVED IN WRITING IN ADVANCE BY OWNER. THIS DOCUMENT SHALL BE RETURNED TO OWNER UPON REQUEST. IT MAY BE SUBJECT TO CERTAIN RESTRICTIONS UNDER APPLICABLE EXPORT CONTROL LAWS AND REGULATIONS.</small>		



DRAWN BY NJS
DATE 05-15-2002
APPROVED BY ML
DATE 05-20-2002
REFERENCE
THIRD ANGLE PROJECTION

 ELECTRIC MOTORS GEARMOTORS AND DRIVES		DESCRIPTION
		CONNECTION DIAGRAM 3 PHASE - SINGLE VOLT - MOTOR WITH PROTECTORS
MATERIAL	PROCESS/FINISH	
SIZE A	DRAWING NUMBER EE7300T-LE	SHEET 1 OF 1

P.O. BOX 8003
 WAUSAU, WI 54401-8003
 PH. 715-675-3311



DATA VOLTS: 460

CERTIFICATION DATA SHEET

CONN. DIAGRAM: A-EE7300T-LE
 OUTLINE: B-SS550049LE-2025
 WINDING: T4454135

CAT #: 810503.00

R2 1

TYPICAL MOTOR PERFORMANCE DATA

HP	KW	SYNC RPM	FL RPM	FRAME	ENCLOSURE	TYPE	KVA CODE	DESIGN
200	149	1800	1790	445T	TEBC	TBN	K	INF

PH	HZ	VOLTS	AMPS	START TYPE	DUTY	INSL	S.F.	AMB	ELEV.
3	60	460	230	INVERTER ONLY	CONT	H	1.15	40	3300

F.L. EFF	95.0	3/4 LD EFF	95.0	1/2 LD EFF	93.6	GTD EFF	94.5	ELECT. TYPE	SQ CAGE INV DUTY
F.L. PF	86.0	3/4 LD PF	82.5	1/2 LD PF	74.0				

F.L. TORQUE	LR AMPS @ 460 V	L.R. TORQUE	B.D. TORQUE	F.L. RISE (°C)
587 LB-FT	2,100	1,225 LB-FT 209%	2,260 LB-FT 385%	65

PRESSURE @ 3	POWER	ROTOR WK²	MAX. LOAD WK²	SAFE STALL TIME	STARTS/HOUR	MOTOR WGT
88 dBA	97 dBA	64.0 LB-FT²	0 LB-FT²	0 SEC.	0	2500 LB.

***** SUPPLEMENTAL INFORMATION *****

DE BRACKET TYPE	ODE BRACKET TYPE	MOUNT TYPE	MOTOR ORIENTATION	SEVERE DUTY	HAZARDOUS LOCATION	DRIP COVER	SCREENS	PAINT
STANDARD	ENCODER	RIGID	HORIZONTAL	NO	NONE	NO	NONE	JE - LEESON (ENAM)

BEARINGS		GREASE	SHAFT TYPE	SPECIAL DE	SPECIAL ODE	SHAFT MATERIAL	FRAME MATERIAL
DE	ODE						
BALL	BALL	POLYREX EM	T	NONE	NONE	1045 HOT ROLLED (C-204)	CAST IRON
6318	6316						

THERMOSTATS	PROTECTORS	WDG RTD's	BRG RTD's	THERMISTORS	CONTROL	SPACE HEATERS
TSTATS (N/C)	NOT	NONE	NONE	NONE	FALSE	NA

R1 (ohms/ph)	R2 (ohms/ph)	X1 (ohms/ph)	X2 (ohms/ph)	Xm (ohms/ph)	VIBRATION (in/sec)	FLOAT
0.013	0.007	0.102	0.079	3.025	0.150	ODE

* N O T E S *	INVERTER TORQUE: CONSTANT 2000:1 INV. HP SPEED RANGE: 1.5 X BASE SPEED	
	ENCODER: NORTHSTAR ST56 NONE	
	NONE PPR	
	BRAKE: NONE NONE NONE	
	FT-LB: NA VOLTAGE: NONE HZ:	

DATE: 1/17/2018	UL: Y-(LEESON UL REC)
-----------------	-----------------------

Data Sheet

Date: 1/17/2018

810503.00



Data @ 460 V

Motor Load Data

Load	0%	25%	50%	75%	100%	115%	125%	LR
Current (Amps)	81.0	99.0	135	179	230	254	278	2,100
Torque (ft-lb)	0.00	146	293	440	587	662	737	1,225
RPM	1800	1796	1794	1792	1790	1,787	1782	0
Efficiency (%)		88.5	93.6	95.0	95.0	95.0	95.0	
P.F. (%)	6.5	53.0	74.0	82.5	86.0	87.0	88.0	27.0

Motor Speed Data

	LR	Pull-Up	BD	Rated	Idle
Speed (RPM)	0	900	1680	1790	1800
Current (Amps)	2,100	2,000	1,235	230	81.0
Torque (ft-lb)	1,225	1,150	2,260	587	0.00

Information Block				
HP	200.0			
Sync. RPM	1800			
Frame	445			
Enclosure	TEBC			
Construction	TBN			
Voltage	460 V			
Frequency	60 Hz			
Design	A			
LR Code letter	K			
Service Factor	1.15			
Temp Rise @ FL	65 °C			
Duty	CONT			
Ambient	40 °C			
Elevation	1,000 feet			
Rotor/Shaft wk ²	64.0 Lb-Ft ²			
Ref Wdg	T4454135 R2			
Sound Pressure @ 1M	88 dBA			
VFD Rating	CONSTANT 2000:1			
Outline Dwg	B-SS550049LE-2025			
Conn. Diag	A-EE7300T-LE			
Additional Specifications:				
0				
0				
EQUIV CKT (OHMS / PHASE)				
R1	R2	X1	X2	Xm
0.0130	0.0070	0.1020	0.0790	3.0250

