

# PRODUCT INFORMATION PACKET

rotor nl<sup>®</sup>

Model No: 6RN90S04E30U463041

Catalog No: 6RN90S04E30U46@3041

1.10 kW General Purpose Low Voltage IEC Motor IE3, 3 phase, 1500 rpm, D400/Y690V 50Hz,  
90S Frame B5, IC411



Regal and Rotor nl are trademarks of Regal Rexnord Corporation or one of its affiliated companies.  
©2023 Regal Rexnord Corporation, All Rights Reserved. MC017097E

RegalRexnord



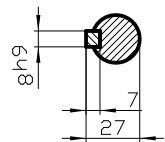
### Nameplate Specifications

Output HP	1.5 Hp	Output KW	1.1 kW
Frequency	50 Hz	Voltage	D400/Y690 V
Current	2.43 A	Speed	1445 rpm
Service Factor	1	Phase	3
Efficiency	84.1 %	Power Factor	0.78
Duty	S1	Insulation Class	F
Frame	90S	Enclosure	Totally Enclosed Fan Cooled
Thermal Protection	No Protection	Ambient Temperature	40 °C
Drive End Bearing Size	6205-2Z/C3WT (-40°C/+160°C)	Opp Drive End Bearing Size	6004-2Z/C3WT (-40°C/+160°C)
UL	No	CSA	Optional
CE	Yes	IP Code	IP55
Number of Speeds	1	Efficiency Class	IE3

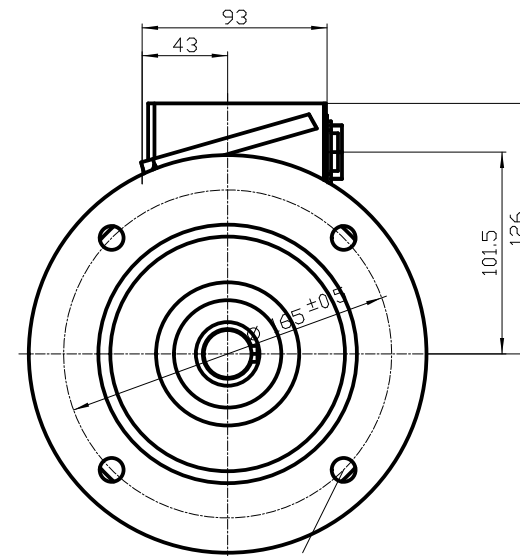
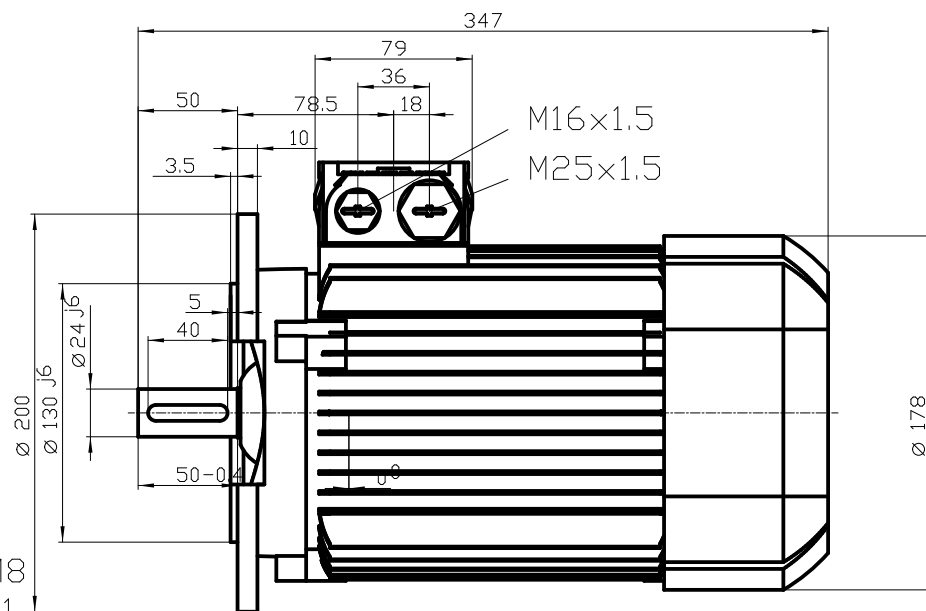
### Technical Specifications

Electrical Type	Squirrel Cage	Starting Method	Direct On Line
Poles	4	Rotation	Clockwise Shaft End
Mounting	B5	Motor Orientation	Any
Frame Material	Cast iron	Shaft Type	Keyed
Shaft Diameter	24 mm	Shaft Extension	50 mm
Outline Drawing	6RN90S04E30U463041		

This is an uncontrolled document once printed or downloaded and is subject to change without notice. Date Created:01/19/2023



DIN 332-DR M8  
DIN 6885 Teil1



Unit	mm		
Date	30.04.13	6RN90S04E30 B5 / V1 (no canopy)	

## Datasheet

rotor nl®

rotor B.V.

Mors 1-5, 7151 MX Eibergen NL  
 www.rotor.nl tel.: +31 545 464640  
 sales@rotor.nl tel.: +31 545 464646

**Model No.** 4-Pole cage motor 6RN 90S 1,1kW D400V 50Hz IM3041-FF165

U (V)	Δ / Y Conn	f [Hz]	P [kW]	P [hp]	I [A]	n [RPM]	T [Nm]	IE Class	% EFF at __ load FL 3/4FL 1/2FL	PF at __ load FL 3/4FL 1/2FL	I <sub>A</sub> /I <sub>N</sub> [pu]	T <sub>A</sub> /T <sub>N</sub> [pu]	T <sub>K</sub> /T <sub>N</sub> [pu]
400	D	50	1,1	1 1/2	2,43	1445	7,3	IE3	84,5	0,78	6,80	2,31	3,60
690	Y				1,4								
460	D	60	1,27	1,702	2,4	1740	6,98	IE2	85,8	0,79	7,44	2,96	3,75

Motor type	6RN90S04E30
Enclosure	Totally Enclosed Fan Cooling
Frame Material	Aluminum
Frame size	90S
Duty	S1
Voltage	400 V
Frequency	50 Hz
Power output	1,1 kW
Insulation class	F
Ambient temperature	-20 till 40 °C
Temperature rise	temp.rise acc. B (80K)
Temperature rise winding	27 K
Temperature rise surface	19 K
Altitude above sea level	1000 mtr
Hazardous area classification	Safe area

Rotor type	Cage motor
Bearing type	6004-2Z/C3WT

Type of grease	Unirex N3
----------------	-----------

Country of origin	CZ
-------------------	----

Voltage/Freq	Locked rotor Torque [% nom]	Starting current [% nom]	Pull-up Torque [% nom]	Breakdown Torque [% nom]	No-load Current [A]
@ D 400V 50Hz	231%	679%		360%	1,38 A
@ D 460V 60Hz	296%	737%	241%	375%	1,28 A

**NOTE**

All performance values at rated voltage and frequency.

All performance parameters are subjected to standard tolerance as per IEC 60034-1

Voltage, Frequency are as per IEC60034-1

Technical data are subject to change. There may be discrepancies between calculated and name plate values.

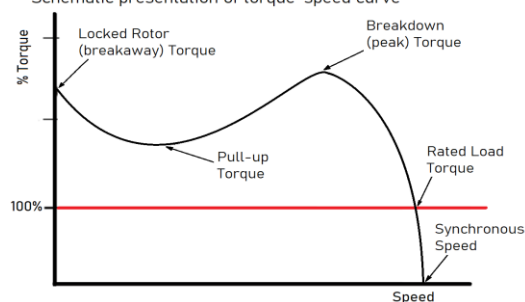
Efficiency	Europe	Global IEC
Standards	EN-IEC: 60034-30	IEC: 60034-30

This is an uncontrolled copy, data can be changed anytime.

Degree of protection	IP55
Mounting type	IM3041-FF165
Cooling method	IC411
Motor weight - approx.	17 kg
Gross weight - approx.	18 kg
Motor inertia	0,0028 kgm <sup>2</sup>
Vibration level	according IEC60034-14
Noise level (pressure) acc 60034-9	0 dB(A)

Direction of rotation	cw /ccw
-----------------------	---------

Schematic presentation of torque-speed curve



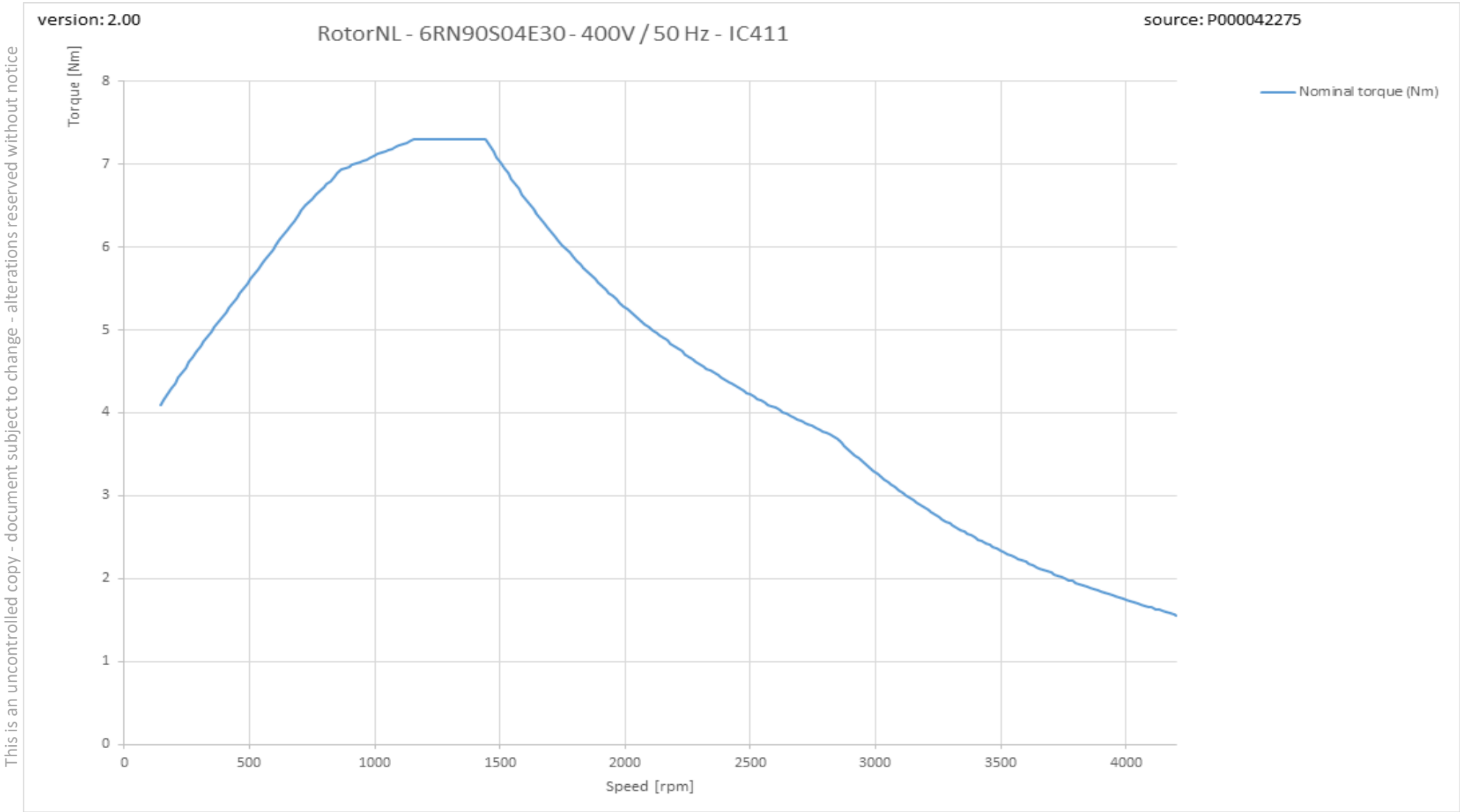
rotor  
is a  
**ISO 9001**  
certified  
company

RegalRexnord™

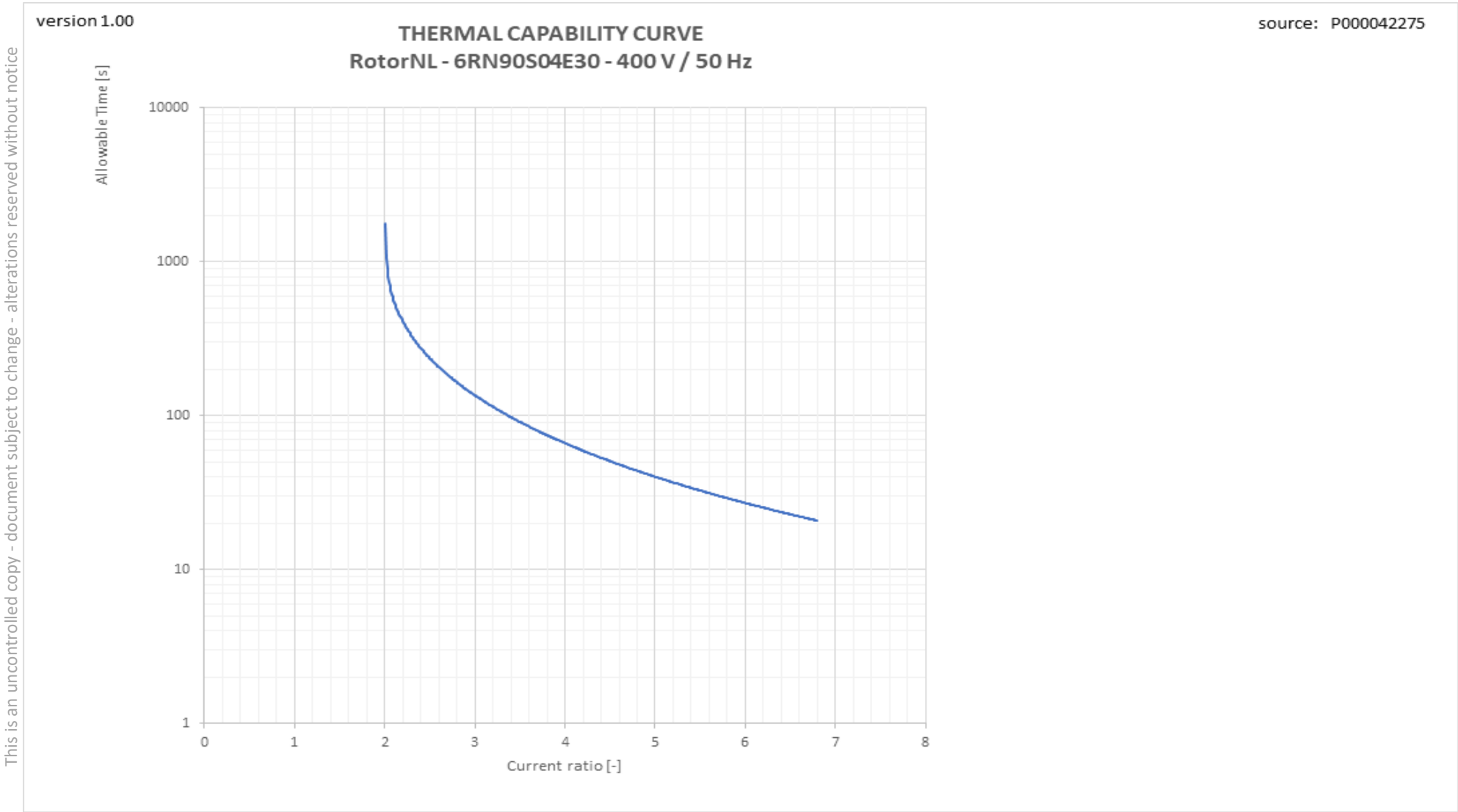
6RN90S04E30 4-pole 1,10kW D/Y 400/690V 50Hz S1 IC411 IE3



Torque versus Speed curve with variable frequency drive



Therm\_VSD graph



This is an uncontrolled copy - document subject to change - alterations reserved without notice