

# PRODUCT INFORMATION PACKET

Model No: 811371.00

Catalog No: 811371.00

Encoder Motors, TEBC - Axial, 150 HP, 3 Ph, 60 Hz, 460 V, 1790 RPM, 445T Frame



Regal and are trademarks of Regal Rexnord Corporation or one of its affiliated companies.  
©2022 Regal Rexnord Corporation, All Rights Reserved. MC017097E

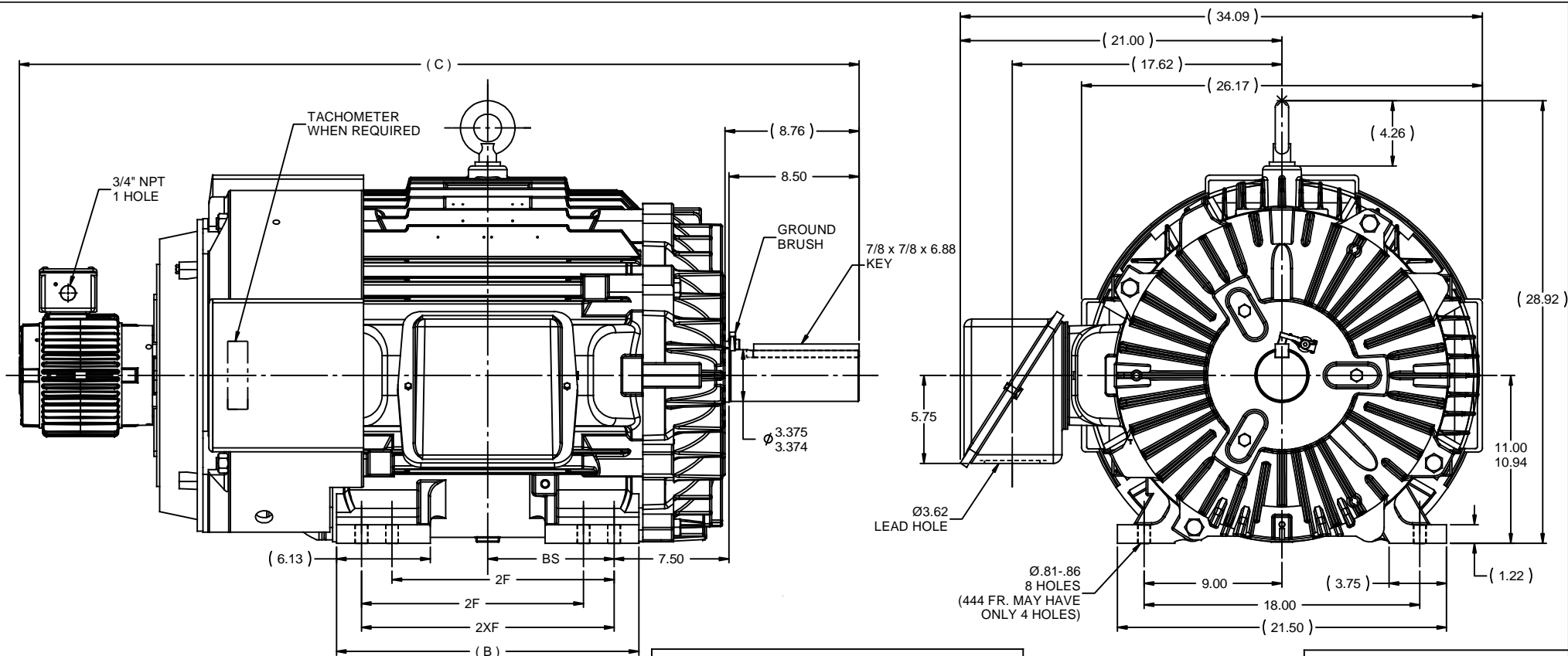
**Nameplate Specifications**

Output HP	<b>150 Hp</b>	Output KW	<b>112.0 kW</b>
Frequency	<b>60 Hz</b>	Voltage	<b>460 V</b>
Current	<b>170.0 A</b>	Speed	<b>1790 rpm</b>
Service Factor	<b>1</b>	Phase	<b>3</b>
Efficiency	<b>94.5 %</b>	Power Factor	<b>87.5</b>
Duty	<b>Continuous</b>	Insulation Class	<b>H</b>
Design Code	<b>INV</b>	KVA Code	<b>J</b>
Frame	<b>445T</b>	Enclosure	<b>Totally Enclosed Blower cooled - Axial</b>
Thermal Protection	<b>No Protection</b>	Ambient Temperature	<b>40 °C</b>
Drive End Bearing Size	<b>6318</b>	Opp Drive End Bearing Size	<b>6316</b>
UL	<b>Recognized</b>	CSA	<b>Y</b>
CE	<b>N</b>	IP Code	<b>43</b>
Number of Speeds	<b>1</b>		

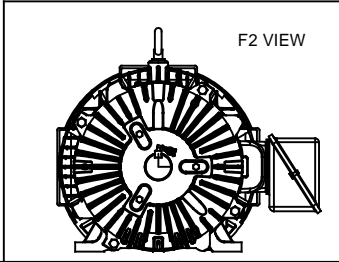
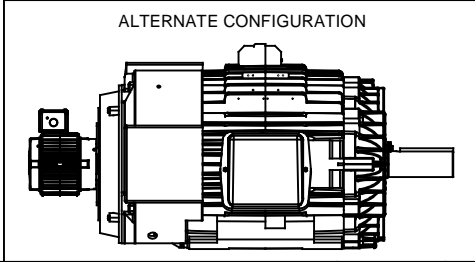
**Technical Specifications**

Electrical Type	<b>Squirrel Cage Inverter Duty</b>	Starting Method	<b>Inverter Only</b>
Poles	<b>4</b>	Rotation	<b>Reversible</b>
Resistance Main	<b>.0245 Ohms</b>	Mounting	<b>Rigid Base</b>
Motor Orientation	<b>Horizontal</b>	Drive End Bearing	<b>Ball</b>
Opp Drive End Bearing	<b>Ball</b>	Frame Material	<b>Cast Iron</b>
Shaft Type	<b>T</b>	Overall Length	<b>54.85 in</b>
Frame Length	<b>20.25 in</b>	Shaft Diameter	<b>3.375 in</b>
Shaft Extension	<b>8.5 in</b>	Assembly/Box Mounting	<b>F1/F2 CAPABLE</b>
Inverter Load	<b>CONSTANT 2000:1</b>		
Outline Drawing	<b>B-SS550049LE-2025</b>	Connection Drawing	<b>A-EE7300T-LE</b>





NOTES:  
 1. CONDUIT BOX CAN BE ROTATED IN 90° STEPS.  
 2. CONDUIT BOX CAN BE MOUNTED ON OPPOSITE SIDE BY REMOVING BRACKETS AND TURNING FRAME 180°.  
 3. NAMEPLATES TO BE READ FROM CONDUIT BOX SIDE OF MOTOR.



							TOLERANCES UNLESS SPECIFIED		<b>ELECTRIC MOTORS GEARMOTORS AND DRIVES</b>		DRAWN HLB 11-21-2003	
							DEC	INCHES			CHK JHL 11-21-2003	
							x	±.1	TITLE OUTLINE - TFN		APPR JES 11-21-2003	
							.XX	±.03	440T FR. - TEBC - AXIAL BLOWER		SCALE 1:6.25	
1 UPDATED FRAME, ADDED ALT. CONFIG. & F2 VIEWS							XXX	±.005	REF		FMF CN 37491	
PER ISAAC 09-5049 AND MU94218							MH	±.0005	MATL		PAGE OF	
NO REVISION							CHK	ANG ±1/2°	FINISH		REV	
							RFP	11-21-2003	PREV		SIZE	DRAWING NO
							NETWORK FILE NAME SS550049LE		B		SS550049LE	1

DASH	FRAME	B	C	2F	2XF	BS
1825	444T	17.75	52.85	14.50	- - -	7.25
2025	444/445T	19.75	54.85	14.50	16.50	8.25



THREE PHASE - SINGLE VOLTAGE MOTOR  
CONDUIT BOX @ 'A'

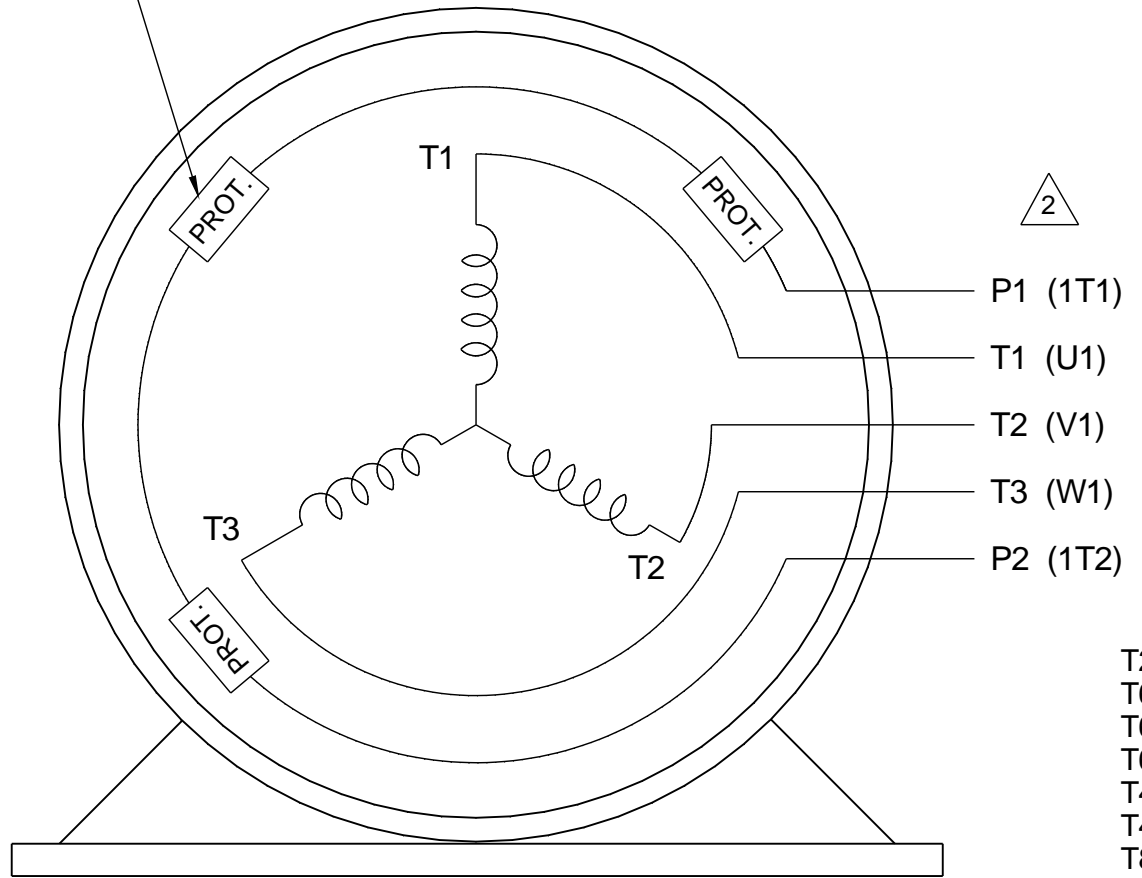
3 THERMO - PROTECTORS  
CONNECTED IN SERIES

TO REVERSE ROTATION:  
INTERCHANGE ANY TWO LINE  
LEAD CONNECTIONS

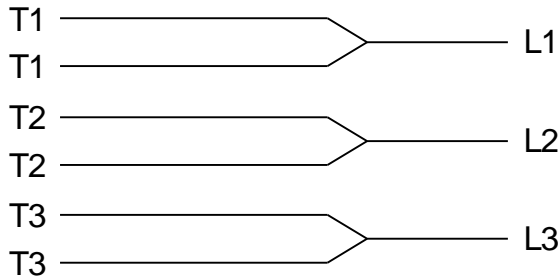
**NOTE FOR FACTORY USE ONLY:**

TO SURGE TEST:

FOR 3 LEAD COMMON CONNECT:  
CONNECT P1 TO T1, THEN P2 TO L1  
FOR 6 LEAD COMMON CONNECT:  
CONNECT P1 TO BOTH T1  
THEN P2 TO L1



IF MOTOR HAS MULTIPLE T'S PER LEAD  
CONNECT TOGETHER LIKE T'S

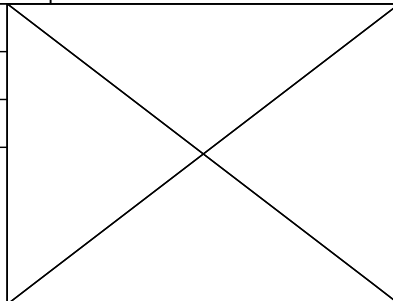


A-9806 DECAL

- T2BM
- T6AW
- T6AL
- T6Z
- T4EG
- T4BF
- T8A
- T6H
- T6A
- T4AX
- T4A
- T2A
- T2F

VIEW OF TERMINAL END

DRAWING REVISION E	REVISION BY MSG	DATE 10-19-2016
ECO ECO-0111093	APPROVED BY TB	DATE 10-19-2016
ECO DESCRIPTION REDRAWN - REVISED TEXT		
<small>COPYRIGHT REGAL BELOIT AMERICA, INC. ALL RIGHTS RESERVED. PROPRIETARY AND CONFIDENTIAL INFORMATION - THIS DOCUMENT IS THE PROPERTY OF REGAL BELOIT AMERICA, INC. ('OWNER') AND CONTAINS OWNER'S PROPRIETARY INFORMATION. ANY PERSON, CORPORATION OR OTHER FIRM RECEIVING IT IS DEEMED, BY RECEIVING IT, TO AGREE THAT IT, AND/OR ANY PART OF IT, SHALL NOT BE DISCLOSED TO ANY PERSON, CORPORATION OR OTHER ENTITY, DUPLICATED, AND/OR USED, EXCEPT AS EXPRESSLY APPROVED IN WRITING IN ADVANCE BY OWNER. THIS DOCUMENT SHALL BE RETURNED TO OWNER UPON REQUEST. IT MAY BE SUBJECT TO CERTAIN RESTRICTIONS UNDER APPLICABLE EXPORT CONTROL LAWS AND REGULATIONS.</small>		



DRAWN BY NJS
DATE 05-15-2002
APPROVED BY ML
DATE 05-20-2002
REFERENCE
THIRD ANGLE PROJECTION

		ELECTRIC MOTORS GEARMOTORS AND DRIVES	
		DESCRIPTION <b>CONNECTION DIAGRAM</b> 3 PHASE - SINGLE VOLT - MOTOR WITH PROTECTORS	
MATERIAL		PROCESS/FINISH	
SIZE A	DRAWING NUMBER EE7300T-LE		SHEET 1 OF 1

P.O. BOX 8003  
 WAUSAU, WI 54401-8003  
 PH. 715-675-3311



DATA VOLTS: 460

**CERTIFICATION DATA SHEET**

CONN. DIAGRAM: A-EE7300T-LE  
 OUTLINE: B-SS550049LE-2025  
 WINDING: T4454118

CAT #: 811371.00

R4 1

**TYPICAL MOTOR PERFORMANCE DATA**

HP	KW	SYNC RPM	FL RPM	FRAME	ENCLOSURE	TYPE	KVA CODE	DESIGN
150	112	1800	1790	445T	TEBC	TBN	J	INF

PH	HZ	VOLTS	AMPS	START TYPE	DUTY	INSL	S.F.	AMB	ELEV.
3	60	460	170	INVERTER ONLY	CONT	H	1.15	40	3300

F.L. EFF	94.5	3/4 LD EFF	93.6	1/2 LD EFF	92.4	GTD EFF	ELECT. TYPE
F.L. PF	87.5	3/4 LD PF	84.5	1/2 LD PF	77.0	93.6	SQ CAGE INV DUTY

F.L. TORQUE	LR AMPS @ 460 V	L.R. TORQUE	B.D. TORQUE	F.L. RISE (°C)
440 LB-FT	1,500	700 LB-FT 159%	1,475 LB-FT 335%	60

PRESSURE @ 3	POWER	ROTOR WK²	MAX. LOAD WK²	SAFE STALL TIME	STARTS/HOUR	MOTOR WGT
88 dBA	97 dBA	55.0 LB-FT²	0 LB-FT²	0 SEC.	0	2300 LB.

**\*\*\* SUPPLEMENTAL INFORMATION \*\*\***

DE BRACKET TYPE	ODE BRACKET TYPE	MOUNT TYPE	MOTOR ORIENTATION	SEVERE DUTY	HAZARDOUS LOCATION	DRIP COVER	SCREENS	PAINT
STANDARD	ENCODER	RIGID	HORIZONTAL	NO	NONE	NO	NONE	JE - LEESON (ENAM)

BEARINGS		GREASE	SHAFT TYPE	SPECIAL DE	SPECIAL ODE	SHAFT MATERIAL	FRAME MATERIAL
DE	ODE						
BALL	BALL	POLYREX EM	T	NONE	NONE	1045 HOT ROLLED (C-204)	CAST IRON
6318	6316						

THERMOSTATS	PROTECTORS	WDG RTD's	BRG RTD's	THERMISTORS	CONTROL	SPACE HEATERS
TSTATS (N/C)	NOT	NONE	NONE	NONE	FALSE	NA

R1 (ohms/ph)	R2 (ohms/ph)	X1 (ohms/ph)	X2 (ohms/ph)	Xm (ohms/ph)	VIBRATION (in/sec)	FLOAT
0.016	0.009	0.154	0.112	4.423	0.150	ODE

* N O T E S *	INVERTER TORQUE: CONSTANT 2000:1 INV. HP SPEED RANGE: 1.5 X BASE SPEED	
	ENCODER: NORTHSTAR ST56 NONE	
	NONE PPR	
	BRAKE: NONE NONE NONE	
	FT-LB: NA VOLTAGE: NONE HZ:	

DATE: 2/20/2018	UL: Y-(LEESON UL REC)
-----------------	-----------------------

Data Sheet

Date: 2/20/2018

811371.00



Data @ 460 V

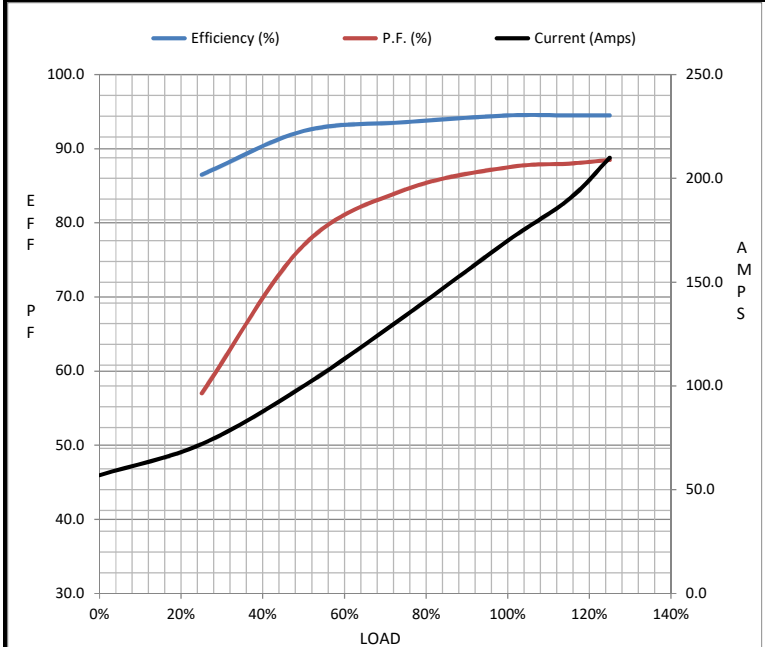
Motor Load Data

Load	0%	25%	50%	75%	100%	115%	125%	LR
Current (Amps)	57.0	72.0	100	134	170	190	210	1,500
Torque (ft-lb)	0.00	110	220	330	440	495	550	700
RPM	1800	1798	1795	1792	1790	1,788	1786	0
Efficiency (%)		86.5	92.4	93.6	94.5	94.5	94.5	
P.F. (%)	10.0	57.0	77.0	84.5	87.5	88.0	88.5	24.0

Motor Speed Data

	LR	Pull-Up	BD	Rated	Idle
Speed (RPM)	0	900	1700	1790	1800
Current (Amps)	1,500	1,400	900	170	57.0
Torque (ft-lb)	700	675	1,475	440	0.00

Information Block				
HP	150.0			
Sync. RPM	1800			
Frame	445			
Enclosure	TEBC			
Construction	TBN			
Voltage	460 V			
Frequency	60 Hz			
Design	A			
LR Code letter	J			
Service Factor	1.15			
Temp Rise @ FL	60 °C			
Duty	CONT			
Ambient	40 °C			
Elevation	1,000 feet			
Rotor/Shaft wk <sup>2</sup>	55.0 Lb-Ft <sup>2</sup>			
Ref Wdg	T4454118 R4			
Sound Pressure @ 1M	88 dBA			
VFD Rating	CONSTANT 2000:1			
Outline Dwg	B-SS550049LE-2025			
Conn. Diag	A-EE7300T-LE			
Additional Specifications:				
0				
0				
EQUIV CKT (OHMS / PHASE)				
R1	R2	X1	X2	Xm
0.0160	0.0090	0.1540	0.1120	4.4230



Speed - Torque Curve

