

PRODUCT INFORMATION PACKET

Model No: 810019.00

Catalog No: 810019.00

Encoder Motors, TEBC - Axial, 40 HP, 3 Ph, 60 Hz, 230/460 V, 1770 RPM, 324TC Frame



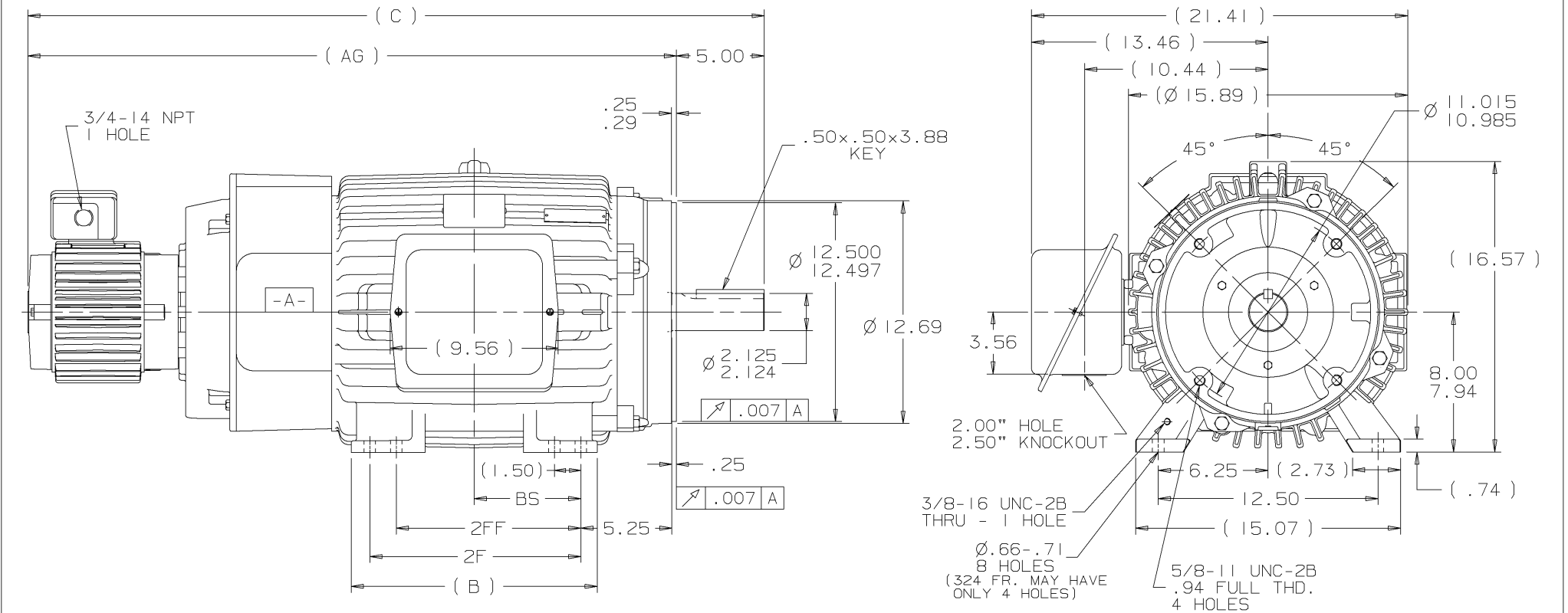
Regal and are trademarks of Regal Rexnord Corporation or one of its affiliated companies.
©2022 Regal Rexnord Corporation, All Rights Reserved. MC017097E

Nameplate Specifications

Output HP	40 Hp	Output KW	30.0 kW
Frequency	60 Hz	Voltage	230/460 V
Current	100.0/50.0 A	Speed	1770 rpm
Service Factor	1	Phase	3
Efficiency	91.7 %	Power Factor	81.5
Duty	Continuous	Insulation Class	H
Design Code	INV	KVA Code	G
Frame	324TC	Enclosure	Totally Enclosed Blower cooled - Axial
Thermal Protection	No Protection	Ambient Temperature	40 °C
Drive End Bearing Size	6312	Opp Drive End Bearing Size	6311
UL	Recognized	CSA	Y
CE	Y	IP Code	43
Number of Speeds	1		

Technical Specifications


Electrical Type	Squirrel Cage Inverter Duty	Starting Method	Inverter Only
Poles	4	Rotation	Reversible
Resistance Main	.124 Ohms	Mounting	Rigid Base
Motor Orientation	Horizontal	Drive End Bearing	Ball
Opp Drive End Bearing	Ball	Frame Material	Cast Iron
Shaft Type	T	Overall Length	40.41 in
Frame Length	14.75 in	Shaft Diameter	2.125 in
Shaft Extension	5.25 in	Assembly/Box Mounting	F1/F2 CAPABLE
Inverter Load	CONSTANT 2000:1		
Outline Drawing	B-SS311268LE-1475	Connection Drawing	A-EE7308T-LE



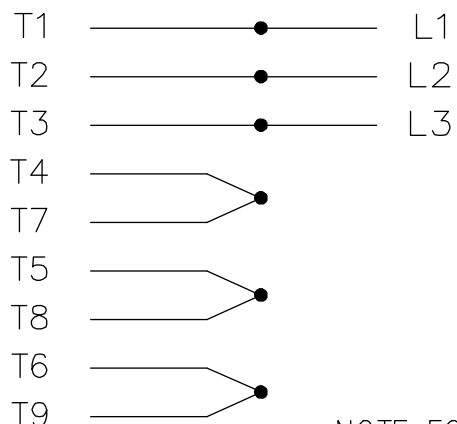
NOTES:

1. C.BOX CAN BE ROTATED IN 90° STEPS
2. C.BOX CAN BE MOUNTED ON OPPOSITE SIDE BY REMOVING BRACKETS AND TURNING FRAME 180°
3. NAMEPLATES TO BE READ FROM CONDUIT BOX SIDE OF MOTOR



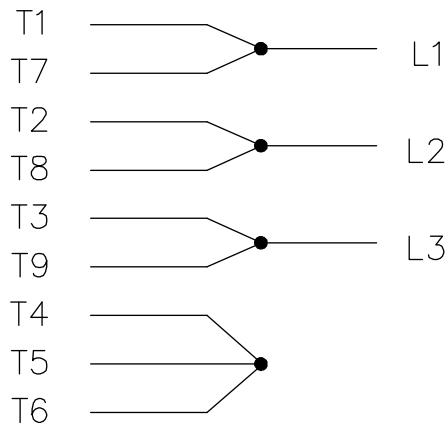
								TOLERANCES UNLESS SPECIFIED		 ELECTRIC MOTORS GEARMOTORS AND DRIVES		DRAWN NJS 05-16-2002	
								DEC. TOLERANCE				CHK ML 05-20-2002	
								.X ± .1				APPD TB 05-20-2002	
								.XX ± .03				TITLE OUTLINE - TEFC	
								.XXX ± .005				320 FR. - BB - STD - 12.50 LAM - C'FACE	
DASH	FRAME	B	C	2F	2FF	BS	AG	I NEW DRAWING CN 35134 NJS 05-20-2002 TB .XXXX ± .0005		<input checked="" type="checkbox"/> SURFACE ROUGHNESS UNLESS SPECIFIED		MAT'L. FINISH	
1475	324T	14.00	40.41	10.50		5.25	35.41	NO. REVISION BY DATE CHK ANG ± 7°30"		<input checked="" type="checkbox"/> SURFACE ROUGHNESS UNLESS SPECIFIED		PREV	
1625	326T	14.00	41.91	12.00	10.50	6.00	36.91	THIS DRAWING IN DESIGN AND DETAIL IS OUR PROPERTY AND MUST NOT BE USED EXCEPT IN CONNECTION WITH OUR WORK. ALL RIGHTS OF DESIGN AND INVENTION ARE RESERVED. THIS IS AN ELECTRONICALLY GENERATED DOCUMENT - DO NOT SCALE THIS PRINT		PURCHASED DIST WA - LB - WC - WI - OR - OK		CAD FILE 55311268LE B 55311268LE	
								DRAWING NO.		REV.			

HIGH VOLTAGE



NOTE FOR FACTORY USE ONLY:
TO SURGE TEST FOR COMMON CONNECT:
HIGH VOLT: CONNECT P1 TO T1
THEN P2 TO L1
LOW VOLT: CONNECT P1 TO T1 & T7,
THEN P2 TO L1

LOW VOLTAGE

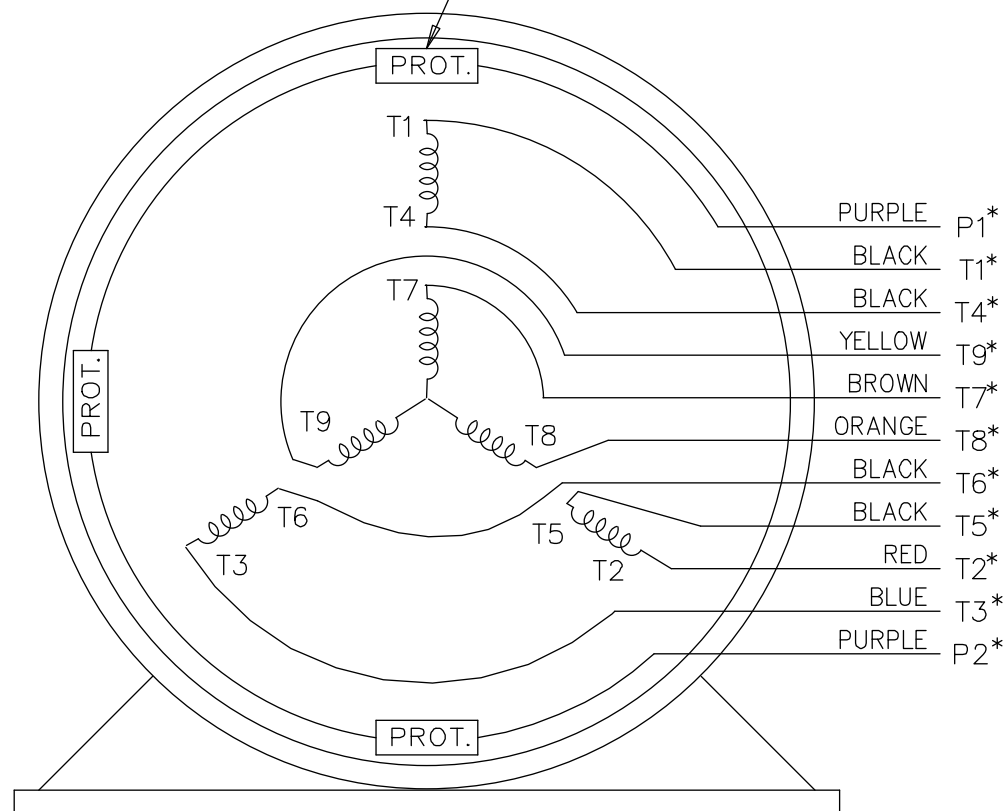


* USE LEADS AS PER PLANT STANDARD IRRWSPECTIVE OF THEIR COLOUR.


THREE PHASE DUAL VOLTAGE MOTOR

EE7308T-LE

THREMO-PROTECTORS
CONNECTED IN SERIES.



VIEW OF TERMINAL END

				TOLERANCES UNLESS SPECIFIED		 ELECTRIC MOTORS GEARMOTORS AND DRIVES	DRAWN TJB 05-07-2002			
05	ADDED * NOTE PER ECN # 26921	UD 01-30-2013	JD	DEC.	INCHES		CHK ML 05-08-2002			
04	ADDED COLORS TO "T & P" LEADS CN 40494	MSG 08-08-2006	ML	.X	±.1		APPD TB 05-08-2002			
03	RE-ISSUE	NJS 04-21-2004	JET	.XX	±.02		SCALE 1=1			
02	REDRAWN	TAT 04-20-2004	ML	.XXX	±.005	TITLE CONNECTION DIAGRAM 3 PHASE – DUAL VOLTAGE MOTOR	REF			
01	NEW DRAWING CN 34708	TJB 05-08-2002	ML	.XXXX	±.0005		MAT'L.	FMF		
NO.	REVISION	BY & DATE	CHK	ANG	±7'30"	FINISH	PREV			
THIS DRAWING IN DESIGN AND DETAIL IS OUR PROPERTY AND MUST NOT BE USED EXCEPT IN CONNECTION WITH OUR WORK ALL RIGHTS OF DESIGN AND INVENTION ARE RESERVED THIS IS AN ELECTRONICALLY GENERATED DOCUMENT – DO NOT SCALE THIS PRINT			RFP			CAD FILE EE7308T_LE	SIZE	DRAWING NO.	PAGE OF	REV.
			DIST LB-WP-LE				A	EE7308T-LE		05



P.O. BOX 8003
WAUSAU, WI 54401-8003
PH. 715-675-3311

DATA VOLTS: 460

CERTIFICATION DATA SHEET

CONN. DIAGRAM: A-EE7308T-LE
OUTLINE: B-SS311268LE-1475
WINDING: K2864202

CAT #: 810019.00

F 3

TYPICAL MOTOR PERFORMANCE DATA

HP	KW	SYNC RPM	FL RPM	FRAME	ENCLOSURE	TYPE	KVA CODE	DESIGN
40	30	1800	1770	324TC	TEBC	TBP	G	INF

PH	HZ	VOLTS	AMPS	START TYPE	DUTY	INSL	S.F.	AMB	ELEV.
3	60	230/460	100/50	INVERTER ONLY	CONT	H	1.15	40	3300

F.L. EFF	91.7	3/4 LD EFF	91.7	1/2 LD EFF	90.2	GTD EFF	90.2	ELECT. TYPE
F.L. PF	81.5	3/4 LD PF	77.0	1/2 LD PF	68.0			SQ CAGE INV DUTY

F.L. TORQUE	LR AMPS @ 460 V	L.R. TORQUE	B.D. TORQUE	F.L. RISE (°C)
119 LB-FT	300	235 LB-FT 197%	320 LB-FT 269%	70

PRESSURE @ 3	POWER	ROTOR WK²	MAX. LOAD WK²	SAFE STALL TIME	STARTS/HOUR	MOTOR WGT
75 dBA	84 dBA	4.7 LB-FT²	0 LB-FT²	0 SEC.	0	625 LB.

*** SUPPLEMENTAL INFORMATION ***

DE BRACKET TYPE	ODE BRACKET TYPE	MOUNT TYPE	MOTOR ORIENTATION	SEVERE DUTY	HAZARDOUS LOCATION	DRIP COVER	SCREENS	PAINT
C-FACE	ENCODER	RIGID	HORIZONTAL	NO	NONE	NO	NONE	JE - LEESON (ENAM

BEARINGS		GREASE	SHAFT TYPE	SPECIAL DE	SPECIAL ODE	SHAFT MATERIAL	FRAME MATERIAL
DE	ODE						
BALL	BALL	POLYREX EM	T	NONE	NONE	1045 HOT ROLLED (C-204)	CAST IRON
6312	6311						

THERMOSTATS	PROTECTORS	WDG RTD's	BRG RTD's	THERMISTORS	CONTROL	SPACE HEATERS
TSTATS (N/C)	NOT	NONE	NONE	NONE	FALSE	NA

R1 (ohms/ph)	R2 (ohms/ph)	X1 (ohms/ph)	X2 (ohms/ph)	Xm (ohms/ph)	VIBRATION (in/sec)	FLOAT
0.082	0.077	0.435	0.592	10.281	0.150	ODE

* N O T E S *			INVERTER TORQUE: CONSTANT 2000:1 INV. HP SPEED RANGE: 1.5 X BASE SPEED
	ENCODER: NORTHSTAR ST56 NONE		NONE PPR
DATE: 2/20/2018			BRAKE: NONE NONE FT-LB: NA VOLTAGE: NONE UL: Y-(LEESON UL REC)

Data Sheet

Date: 2/20/2018

810019.00



Data @ 460 V

Motor Load Data

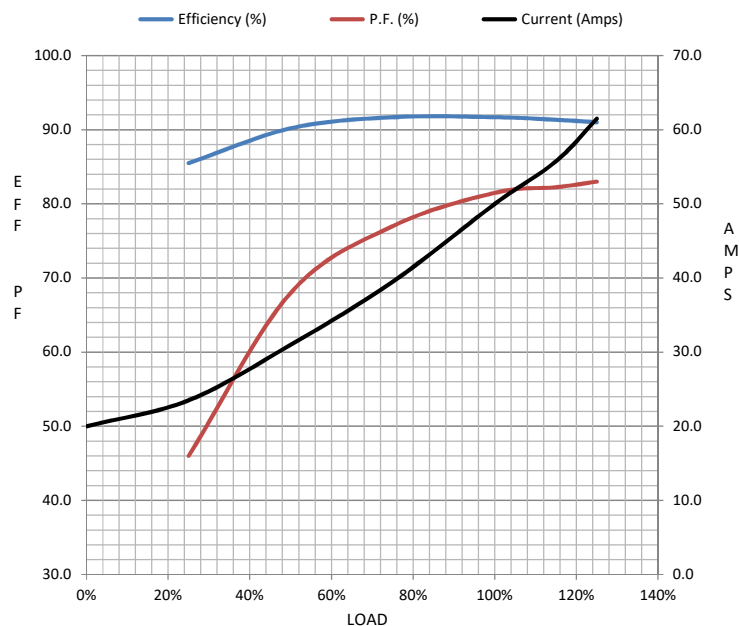
Load	0%	25%	50%	75%	100%	115%	125%	LR	
Current (Amps)	20.0	23.5	31.0	39.5	50.0	55.8	61.5	300	
Torque (ft-lb)	0.00	29.5	59.0	88.5	119	134	148	235	
RPM	1800	1794	1786	1778	1770	1,765	1758	0	
Efficiency (%)		85.5	90.2	91.7	91.7	91.4	91.0		
P.F. (%)	7.5	46.0	68.0	77.0	81.5	82.3	83.0	36.0	

Motor Speed Data

	LR	Pull-Up	BD	Rated	Idle
Speed (RPM)	0	900	1650	1770	1800
Current (Amps)	300	275	180	50.0	20.0
Torque (ft-lb)	235	225	320	119	0.00

Information Block

HP	40.0			
Sync. RPM	1800			
Frame	324			
Enclosure	TEBC			
Construction	TBP			
Voltage	230/460 V			
Frequency	60 Hz			
Design	B			
LR Code letter	G			
Service Factor	1.15			
Temp Rise @ FL	70 ° C			
Duty	CONT			
Ambient	40 ° C			
Elevation	1,000 feet			
Rotor/Shaft wk²	4.7 Lb-Ft²			
Ref Wdg	K2864202 F			
Sound Pressure @ 1M	75 dBA			
VFD Rating	CONSTANT 2000:1			
Outline Dwg	B-SS311268LE-1475			
Conn. Diag	A-EE7308T-LE			
Additional Specifications:				
0				
0				
EQUIV CKT (OHMS / PHASE)				
R1	R2	X1	X2	Xm
0.0820	0.0770	0.4350	0.5920	10.2810



Speed - Torque Curve

