

PRODUCT INFORMATION PACKET



Model No: 6RN160L06E34U461081

Catalog No: 6RN160L06E34U46@1081

11.00 kW General Purpose Low Voltage IEC Motor IE3, 3 phase, 1000 rpm, D400/Y690V 50Hz,
160L Frame B3, IC411



Regal and Rotor nl are trademarks of Regal Rexnord Corporation or one of its affiliated companies.
©2023 Regal Rexnord Corporation, All Rights Reserved. MC017097E





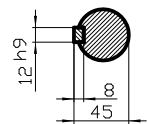
Nameplate Specifications

Output HP	15 Hp	Output KW	11.0 kW
Frequency	50 Hz	Voltage	D400/Y690 V
Current	22.27 A	Speed	975 rpm
Service Factor	1	Phase	3
Efficiency	90.3 %	Power Factor	0.80
Duty	S1	Insulation Class	F
Frame	160L	Enclosure	Totally Enclosed Fan Cooled
Thermal Protection	No Protection	Ambient Temperature	40 °C
Drive End Bearing Size	6309-2Z/C3WT (-40°C/+160°C)	Opp Drive End Bearing Size	6309-2Z/C3WT (-40°C/+160°C)
UL	No	CSA	Optional
CE	Yes	IP Code	IP55
Number of Speeds	1	Efficiency Class	IE3

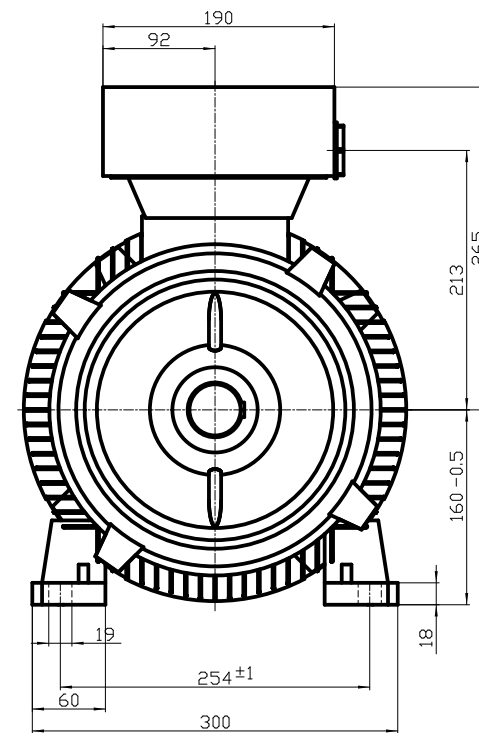
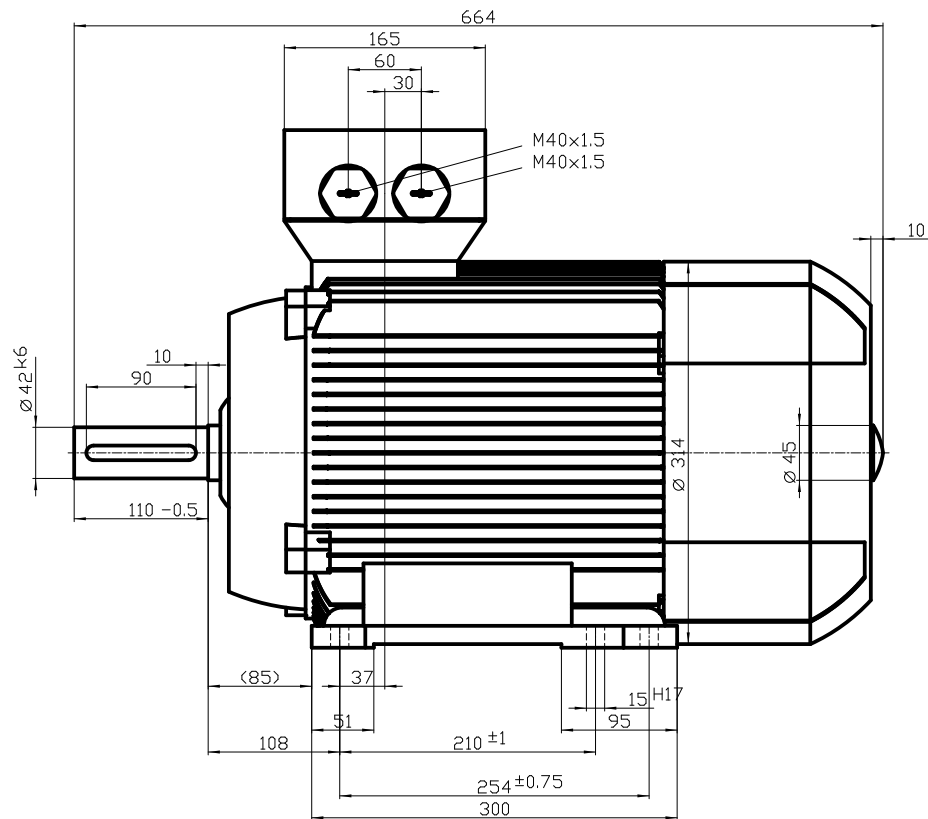
Technical Specifications

Electrical Type	Squirrel Cage	Starting Method	Direct On Line
Poles	6	Rotation	Clockwise Shaft End
Mounting	B3	Motor Orientation	Any
Frame Material	Cast iron	Shaft Type	Keyed
Shaft Diameter	42 mm	Shaft Extension	110 mm
Outline Drawing	6RN160L06E34U461081		

This is an uncontrolled document once printed or downloaded and is subject to change without notice. Date Created:01/19/2023



DIN 332-DR M16
DIN 6885 Teil1



Unit mm
Date 30.04.13

rotor

6RN160L06E34 B3

Datasheet

rotor nl®

rotor B.V.

Mors 1-5, 7151 MX Eibergen NL
 www.rotor.nl tel.: +31 545 464640
 sales@rotor.nl tel.: +31 545 464646

Model No. 6-Pole cage motor 6RN 160L 11kW D400V 50Hz IM1081

U (V)	Δ / Y Conn	f [Hz]	P [kW]	P [hp]	I [A]	n [RPM]	T [Nm]	IE Class	% EFF at __ load FL 3/4FL 1/2FL	PF at __ load FL 3/4FL 1/2FL	I _A /I _N [pu]	T _A /T _N [pu]	T _K /T _N [pu]
400	D	50	11	15	22,3	975	108	IE3	89,8	0,80	6,60	1,80	3,00
690	Y				12,9								
460	D	60	12,6	16,89	21,5	1175	102	IE2	90,2	0,81	6,60	1,65	2,94

Motor type	6RN160L06E34
Enclosure	Totally Enclosed Fan Cooling
Frame Material	Cast iron
Frame size	160L
Duty	S1
Voltage	400 V
Frequency	50 Hz
Power output	11 kW
Insulation class	F
Ambient temperature	-20 till 40 °C
Temperature rise	temp.rise acc. B (80K)
Temperature rise winding	48 K
Temperature rise surface	
Altitude above sea level	1000 mtr
Hazardous area classification	Safe area

Rotor type	Cage motor
Bearing type	6309-2Z/C3WT

Type of grease	Unirex N3
----------------	-----------

Phase resistance at 20°C	0,8620 Ohm
Country of origin	CZ

Voltage/Freq	Locked rotor Torque [% nom]	Starting current [% nom]	Pull-up Torque [% nom]	Breakdown Torque [% nom]	No-load Current [A]
@ D 400V 50Hz	180%	650%	160%	300%	10 A
@ D 460V 60Hz	165%	655%	150%	294%	9,4 A

NOTE

All performance values at rated voltage and frequency.

All performance parameters are subjected to standard tolerance as per IEC 60034-1

Voltage, Frequency are as per IEC60034-1

Technical data are subject to change. There may be discrepancies between calculated and name plate values.

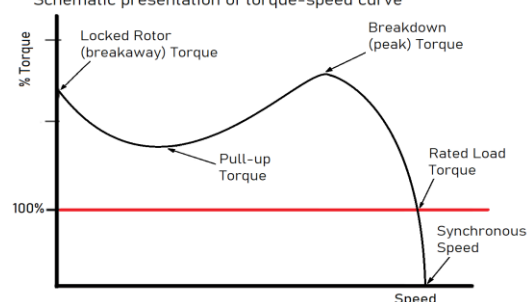
Efficiency	Europe	Global IEC
Standards	EN-IEC: 60034-30	IEC: 60034-30

This is an uncontrolled copy, data can be changed anytime.

Degree of protection	IP55
Mounting type	IM1081
Cooling method	IC411
Motor weight - approx.	141 kg
Gross weight - approx.	145 kg
Motor inertia	0,1200 kgm ²
Vibration level	according IEC60034-14
Noise level (pressure) acc 60034-9	67 dB(A)

Direction of rotation	cw / ccw
-----------------------	----------

Schematic presentation of torque-speed curve



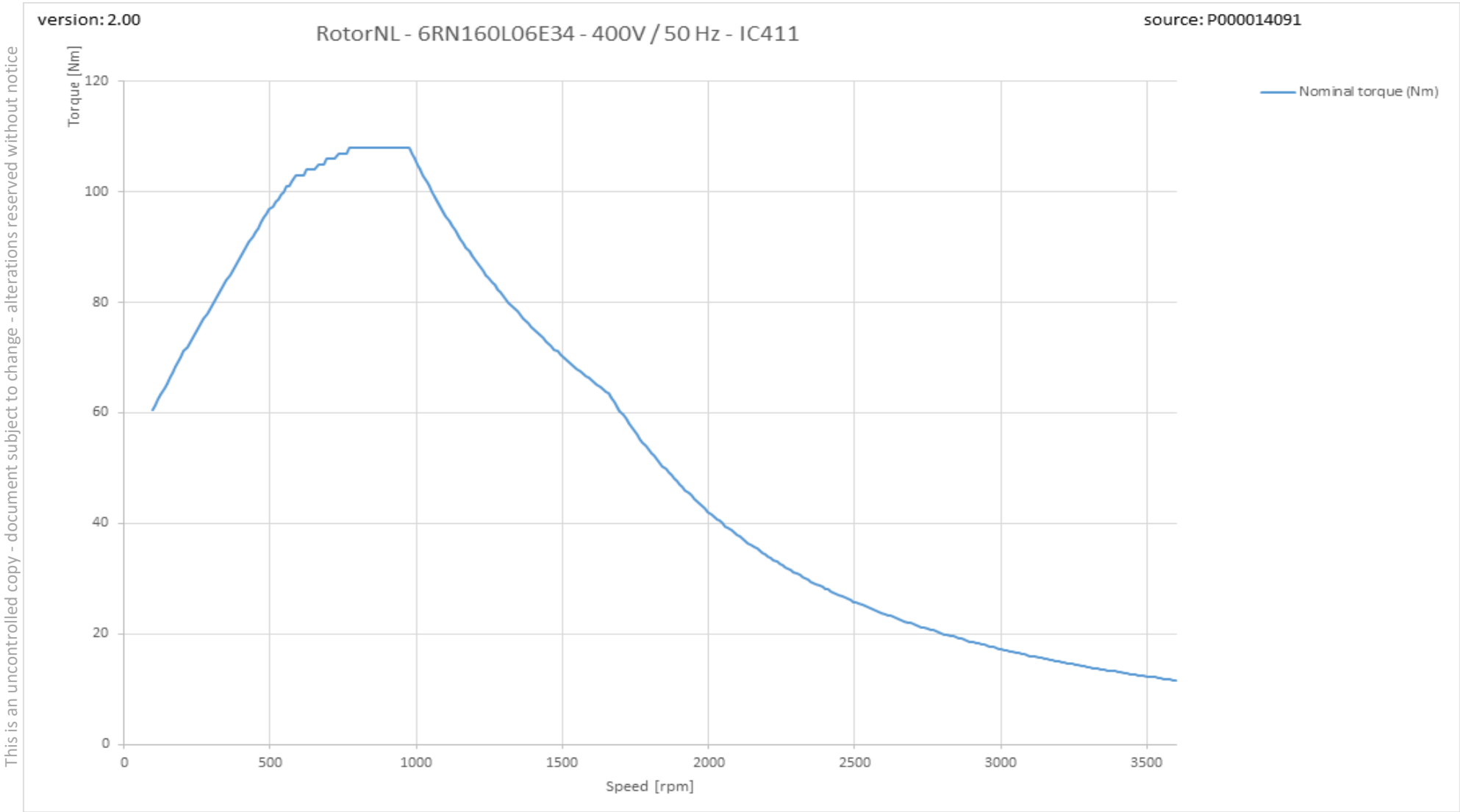
rotor
is a
ISO 9001
certified
company

RegalRexnord

6RN160L06E34 6-pole 11,00kW D/Y 400/690V 50Hz S1 IC411 IE3

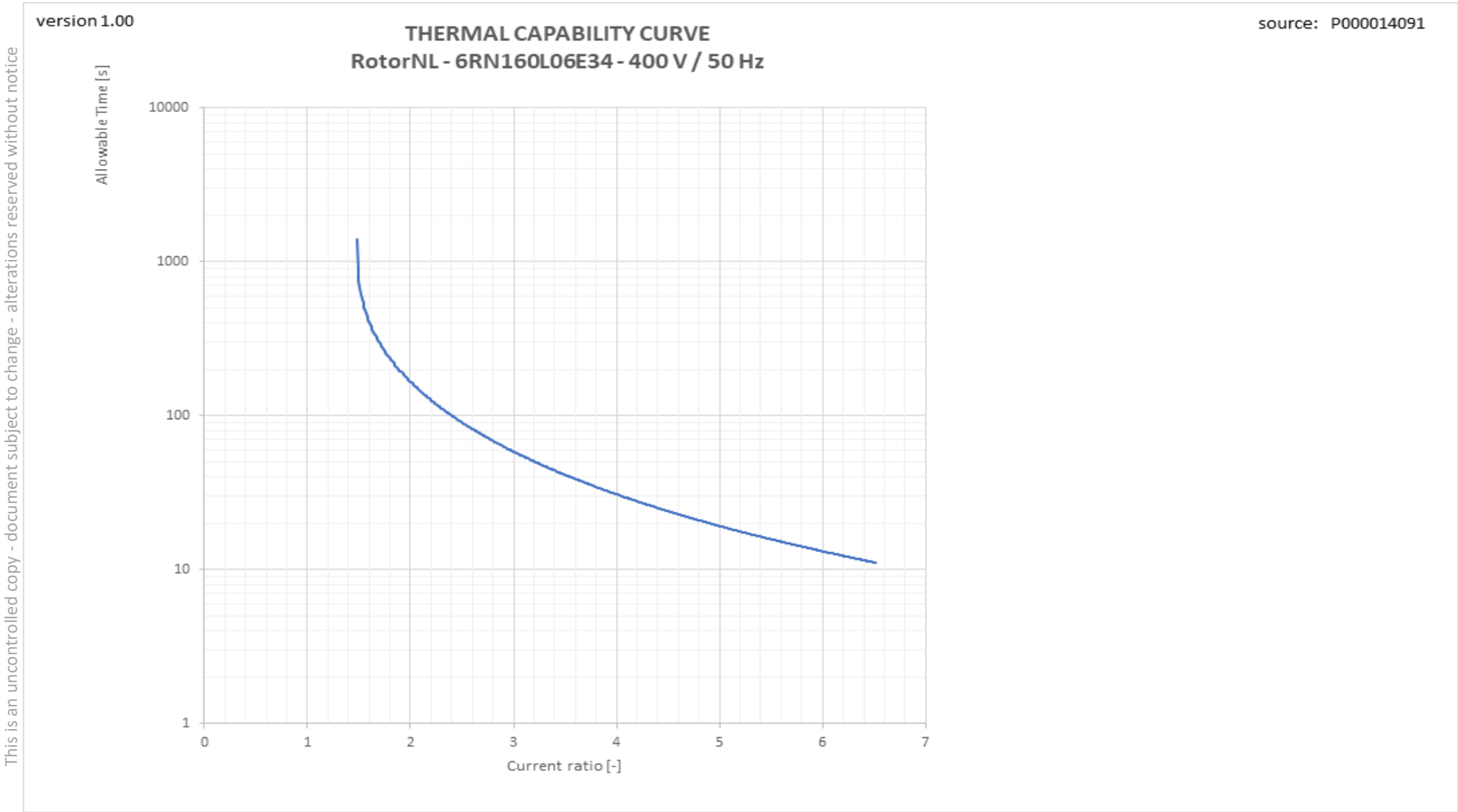


Torque versus Speed curve with variable frequency drive



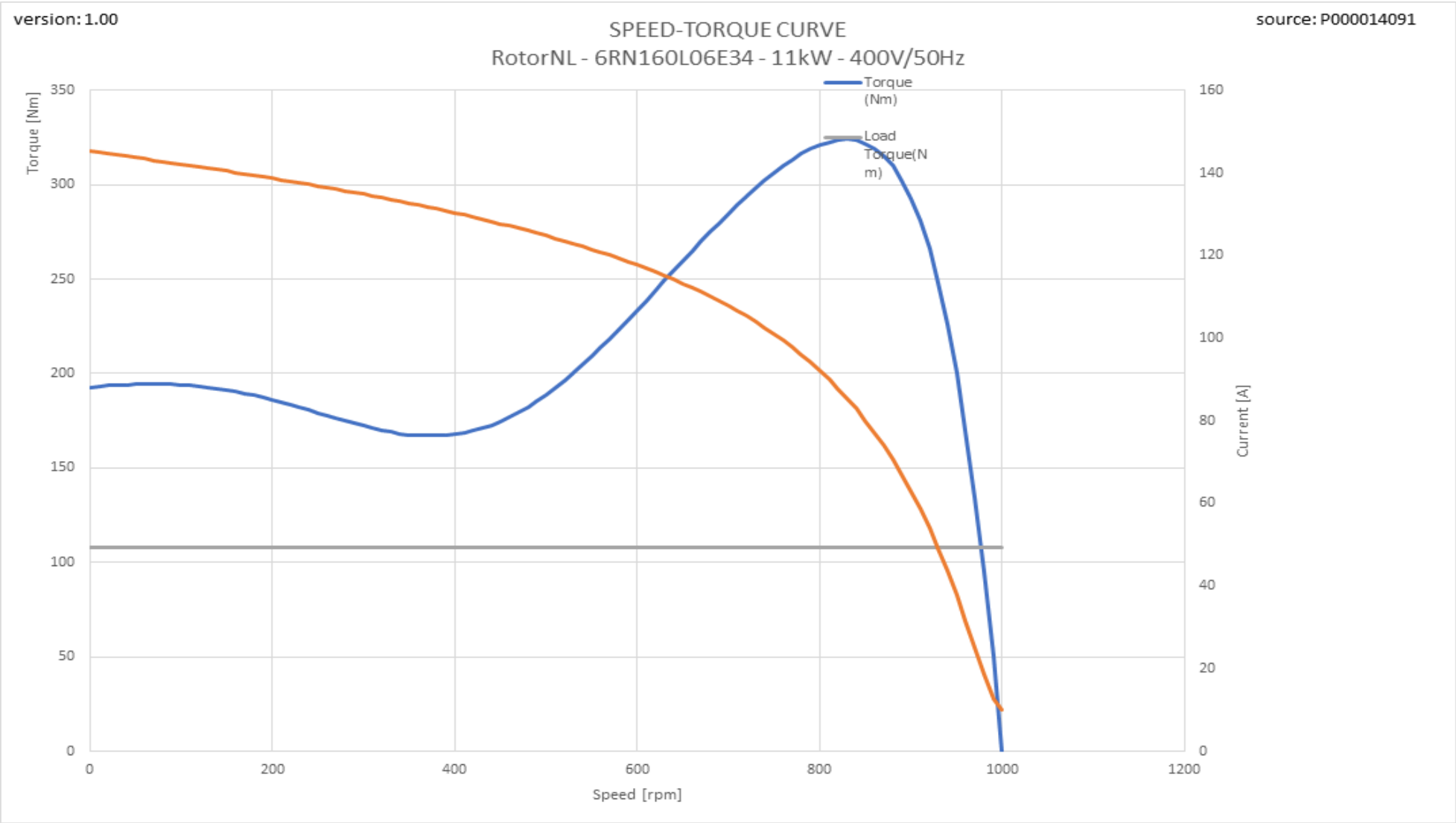
This is an uncontrolled copy - document subject to change - alterations reserved without notice

Therm_VSD graph



This is an uncontrolled copy - document subject to change - alterations reserved without notice

Tn graph



This is an uncontrolled copy - document subject to change - alterations reserved without notice