

PRODUCT INFORMATION PACKET

marathon®
Motors

Model No: 6805LHDS17068
Catalog No: 6805LHDS17068
600,1800,DPFV,6805L,3/60/460

Regal and Marathon are trademarks of Regal Rexnord Corporation or one of its affiliated companies.
©2024 Regal Rexnord Corporation, All Rights Reserved. MC017097E

RegalRexnord

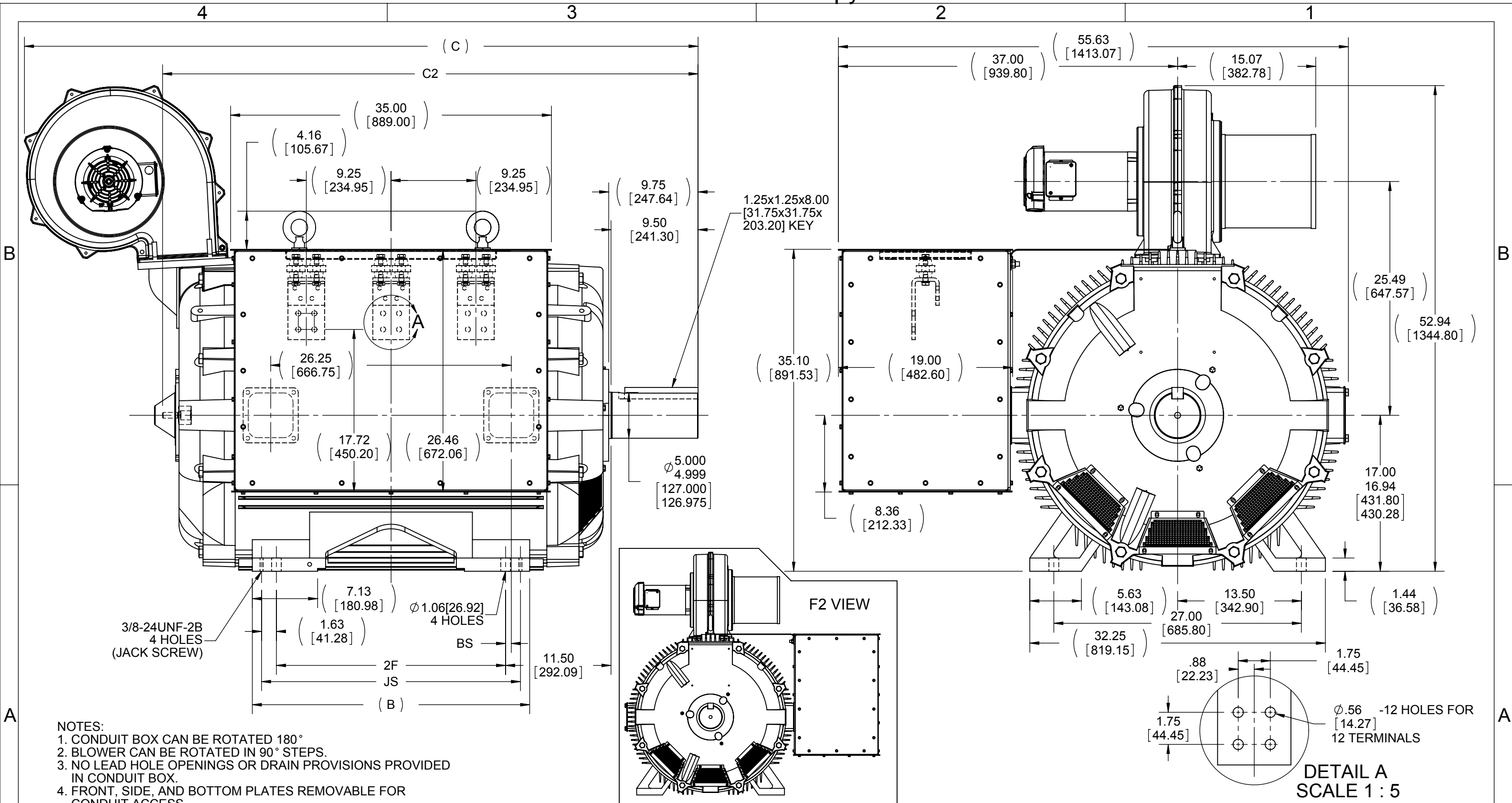
Nameplate Specifications

Phase	3	Output HP	600 Hp
Output KW	450.0 kW	Voltage	460 V
Speed	1788 rpm	Service Factor	1
Frame	6805L	Enclosure	DPFV
Thermal Protection	Thermostat	Efficiency	96.8 %
Ambient Temperature	40 °C	Frequency	60 Hz
Current	645.0 A	Power Factor	89
Duty	Continuous	Insulation Class	H
Design Code	INV	KVA Code	F
Drive End Bearing Size	6326	Opp Drive End Bearing Size	6318
UL	No	CSA	Y
CE	Y	IP Code	12
Number of Speeds	1		

Technical Specifications

Electrical Type	Squirrel Cage Inverter Duty	Starting Method	Inverter Only
Poles	4	Rotation	Reversible
Resistance Main	.0052 Ohms	Mounting	Rigid Base
Motor Orientation	Horizontal	Drive End Bearing	Ball
Opp Drive End Bearing	Ball	Frame Material	Cast Iron
Shaft Type	L	Assembly/Box Mounting	F1/F2 CAPABLE
Outline Drawing	B-SS554344-3400	Connection Drawing	A-EE7300S

This is an uncontrolled document once printed or downloaded and is subject to change without notice. Date Created:04/24/2024



NOTES:
 1. CONDUIT BOX CAN BE ROTATED 180°
 2. BLOWER CAN BE ROTATED IN 90° STEPS.
 3. NO LEAD HOLE OPENINGS OR DRAIN PROVISIONS PROVIDED IN CONDUIT BOX.
 4. FRONT, SIDE, AND BOTTOM PLATES REMOVABLE FOR CONDUIT ACCESS.

DASH	FRAME	B	C	C2	BS	2F	JS
3400	6805L	30.26 [768.60]	73.49 [1866.65]	58.79 [1493.27]	.63 [16.00]	25.00 [635.00]	28.25 [717.55]

DRAWING REVISION	REVISION BY	DATE
C	AJW	10-24-2014
ECO	APPROVED BY	DATE
ECO-0063858	TDB	10-28-2014
ECO DESCRIPTION		
ADDED F2 VIEW		
<small>COPYRIGHT REGAL BELOIT AMERICA, INC. ALL RIGHTS RESERVED. PROPRIETARY AND CONFIDENTIAL INFORMATION - THIS DOCUMENT IS THE PROPERTY OF REGAL BELOIT AMERICA, INC. ("OWNER") AND CONTAINS OWNER'S PROPRIETARY INFORMATION. ANY PERSON, CORPORATION OR OTHER FIRM RECEIVING IT IS DEEMED, BY RECEIVING IT, TO AGREE THAT IT, AND/OR ANY PART OF IT, SHALL NOT BE DISCLOSED TO ANY PERSON, CORPORATION OR OTHER ENTITY, DUPLICATED, AND/OR USED, EXCEPT AS EXPRESSLY APPROVED IN WRITING IN ADVANCE BY OWNER. THIS DOCUMENT SHALL BE RETURNED TO OWNER UPON REQUEST. IT MAY BE SUBJECT TO CERTAIN RESTRICTIONS UNDER APPLICABLE EXPORT CONTROL LAWS AND REGULATIONS.</small>		

TOLERANCES UNLESS OTHERWISE SPECIFIED:			
DEC.	INCH	mm	ANGLE
.X	±0.1	[±2.5]	±7°30"
.XX	±0.03	[±0.76]	
.XXX	±0.005	[±0.127]	
.XXXX	±0.0005	[±0.0127]	
REMOVE BURRS & BREAK SHARP EDGES: .003/.015 [0.076/.381] CORNER FILLETS: .02 [0.51] MACHINED SURFACES: $200 \sqrt{mm}$ $5.1 \sqrt{INCH}$ mm SHOWN IN [BRACKETS]			

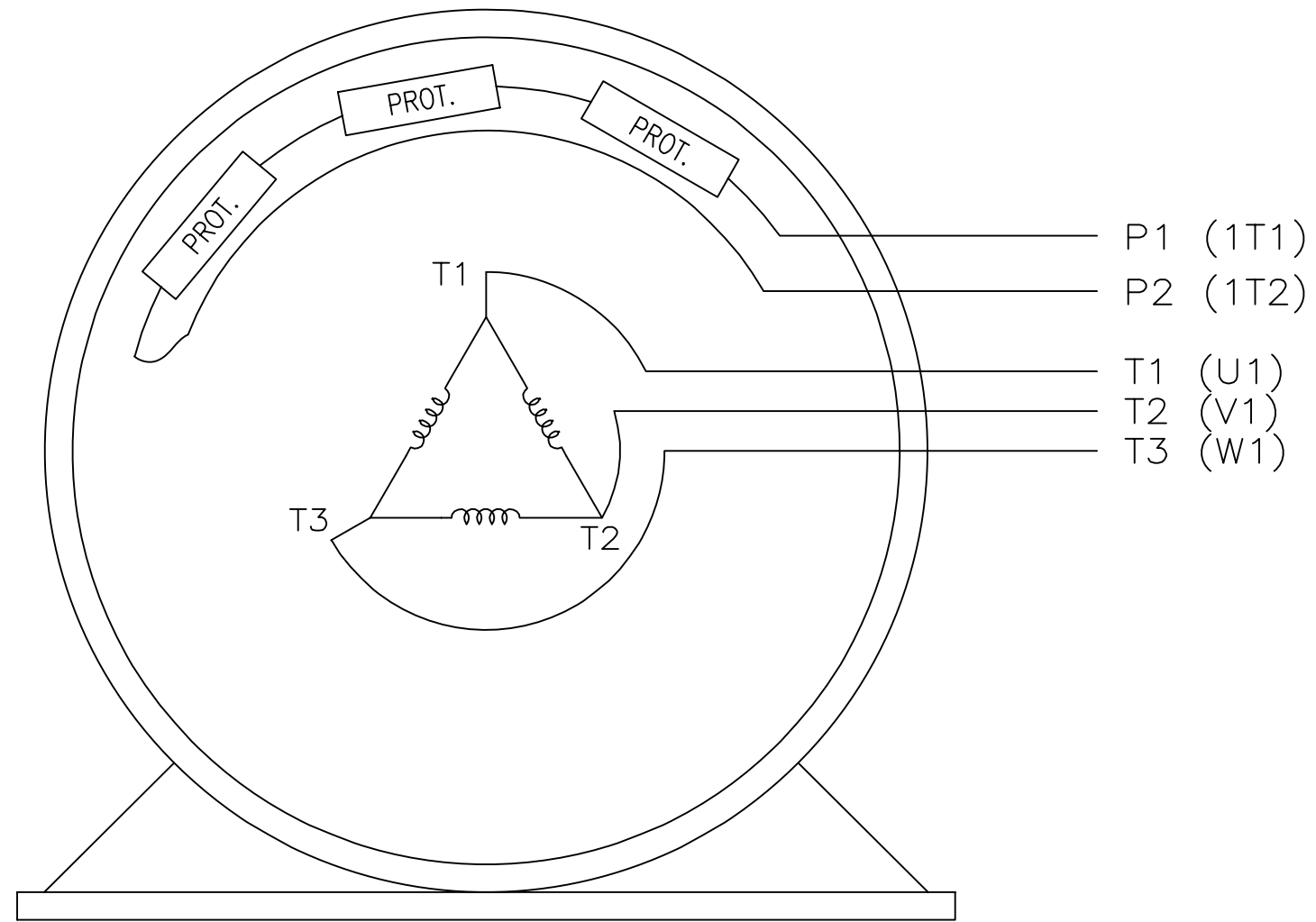
DRAWN BY	DATE
EDK	03-22-2011
APPROVED BY	DATE
MJS	03-23-2011
REFERENCE	THIRD ANGLE PROJECTION
SS554046	

Regal Beloit America, Inc.	
DESCRIPTION OUTLINE 6805L FR.	
MATERIAL	PROCESS/FINISH
SS554046	
SIZE B	DRAWING NUMBER SS554344
SHEET 1 OF 1	

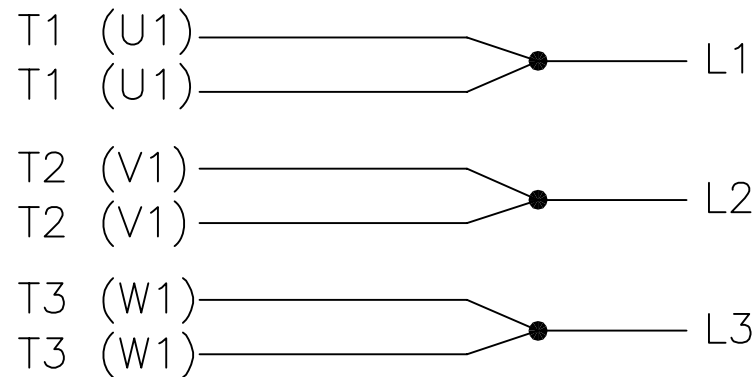
EE7300S

THREE PHASE – SINGLE VOLTAGE MOTOR

TO REVERSE ROTATION:
INTERCHANGE ANY TWO LINE
LEAD CONNECTIONS



IF MOTOR HAS MULTIPLE
T'S PER LEAD CONNECT
TOGETHER LIKE T'S



A-9806 DECAL

VIEW OF TERMINAL END

NO.	REVISION	BY & DATE	CHK	TOLERANCES UNLESS SPECIFIED			REGAL-BELOIT CORPORATION	DRAWN KL 12-15-1999			
				DEC.	INCHES						
F	UPDATED TITLE BLOCK	HV 02-27-2014	EWB	.X	±	-	REGAL-BELOIT CORPORATION	CHK DJK 12-15-1999			
3	REMOVED "N.C." FROM PROT.'S MU61770	JJB 08-02-2010		.XX	±	-	TITLE CONNECTION DIAGRAM – EXTERNAL SINGLE VOLTAGE 3Ø MOTOR	APPD DJK 12-15-1999			
2	ADDED IEC MARKINGS MU61770	KL 09-16-2004	EAB	.XXX	±	-		SCALE 1=1			
1	NEW DRAWING	KL 12-16-1999		.XXXX	±	-		REF			
							MAT'L.	FMF			
							FINISH	PREV			
THIS DRAWING IN DESIGN AND DETAIL IS OUR PROPERTY AND MUST NOT BE USED EXCEPT IN CONNECTION WITH OUR WORK ALL RIGHTS OF DESIGN AND INVENTION ARE RESERVED THIS IS AN ELECTRONICALLY GENERATED DOCUMENT – DO NOT SCALE THIS PRINT				RFP	CAD FILE ee7300s			SIZE A	DRAWING NO. EE7300S	PAGE OF	REV. F
				DIST	WA-LB-SB						

Date: 1/30/2024 REF: 6805LHDS17068

Customer: _____

Attention: _____

Submitted by: RAMYA



Torque Capability Curve

Data @ 460 Volts

	Min CT RPM	Base RPM	CHP RPM	Max CHP RPM	Max RPM	Peak
HP	0.00	0.00	600	597	597	597
Voltage (volts)	-	5	460	460	460	460
Frequency (HZ)	0	1	60	75	75	74
RPM	0	0	1,788	2,240	2,240	2,240
Current (Amps)	645	645	645	645	645	2,205
Rated Tq (ft-lb)	1,762	1,762	1,762	1,400	1,400	1,400
Peak Tq (ft-lb)	3,910	3,910	3,910	2,436	2,436	2,436

Motor Speed Data						
	Locked Rotor	Pull-Up	Breakdown	Rated Load	Idle	Information Block
Speed (RPM)	0	900	1730	1788	1800	HP 600.0
Current (Amps)	3425	3250	2450	645	155	Sync. RPM 1800.0
Torque (ft-lbs)	1000	850	4250	1762	0	Frame 6805

