

# PRODUCT INFORMATION PACKET

**marathon®**  
Motors

Model No: 5810SVDSL16002

Catalog No: Y9127

durance Series® MODEL-IHP, 1250HP,2P,ODP,5810S,3/60/2300/4000-4160,CW/DE,120VSH,WRTD-SH,BRTD PROV



Regal and Marathon are trademarks of Regal Rexnord Corporation or one of its affiliated companies.

©2023 Regal Rexnord Corporation, All Rights Reserved. MC017097E

**RegalRexnord**

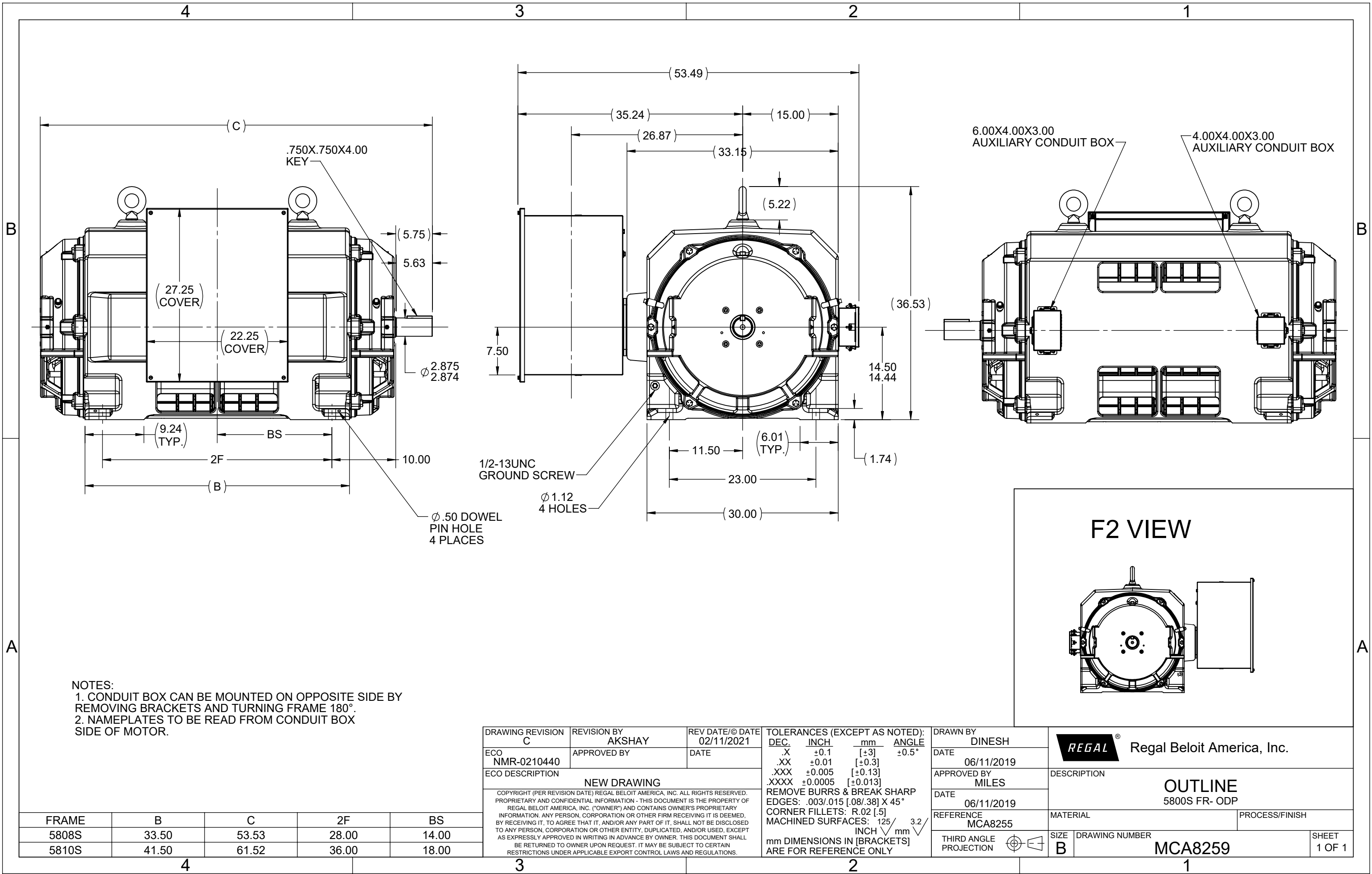
### Nameplate Specifications

Output HP	1250 Hp	Output KW	930.0 kW
Frequency	60 Hz	Voltage	2300/4000-4160 V
Current	268.0/154.0-148.0 A	Speed	3582 rpm
Service Factor	1.15	Phase	3
Efficiency	96.2 %	Power Factor	91
Duty	Continuous	Insulation Class	F
Design Code	B	KVA Code	F
Frame	5810S	Enclosure	Drip Proof
Thermal Protection	No Protection	Ambient Temperature	40 °C
Drive End Bearing Size	6316	Opp Drive End Bearing Size	6316
UL	Recognized	CSA	Y
CE	N	IP Code	23
Number of Speeds	1		

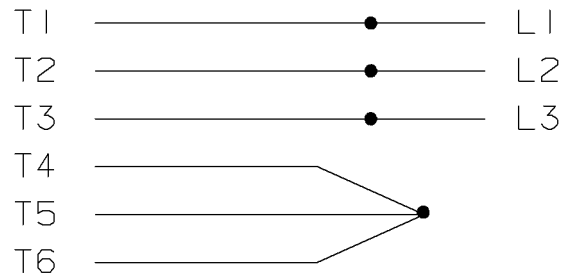
### Technical Specifications

Electrical Type	Bar Rotator Induction Run	Starting Method	Across The Line
Poles	2	Rotation	Fixed Counterclockwise
Mounting	Rigid Base	Motor Orientation	Horizontal
Drive End Bearing	Ball	Opp Drive End Bearing	Ball
Frame Material	Cast Iron	Shaft Type	S
Shaft Diameter	2.875 in	Assembly/Box Mounting	F1/F2 CAPABLE
Connection Drawing	EE7304AC	Outline Drawing	MCA8259

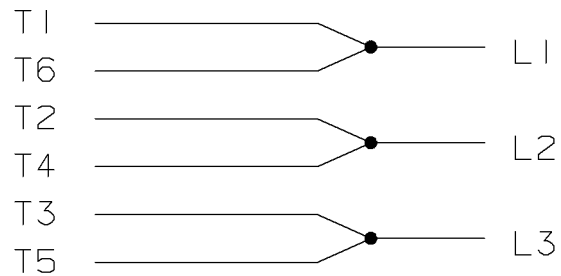
This is an uncontrolled document once printed or downloaded and is subject to change without notice. Date Created:03/13/2023



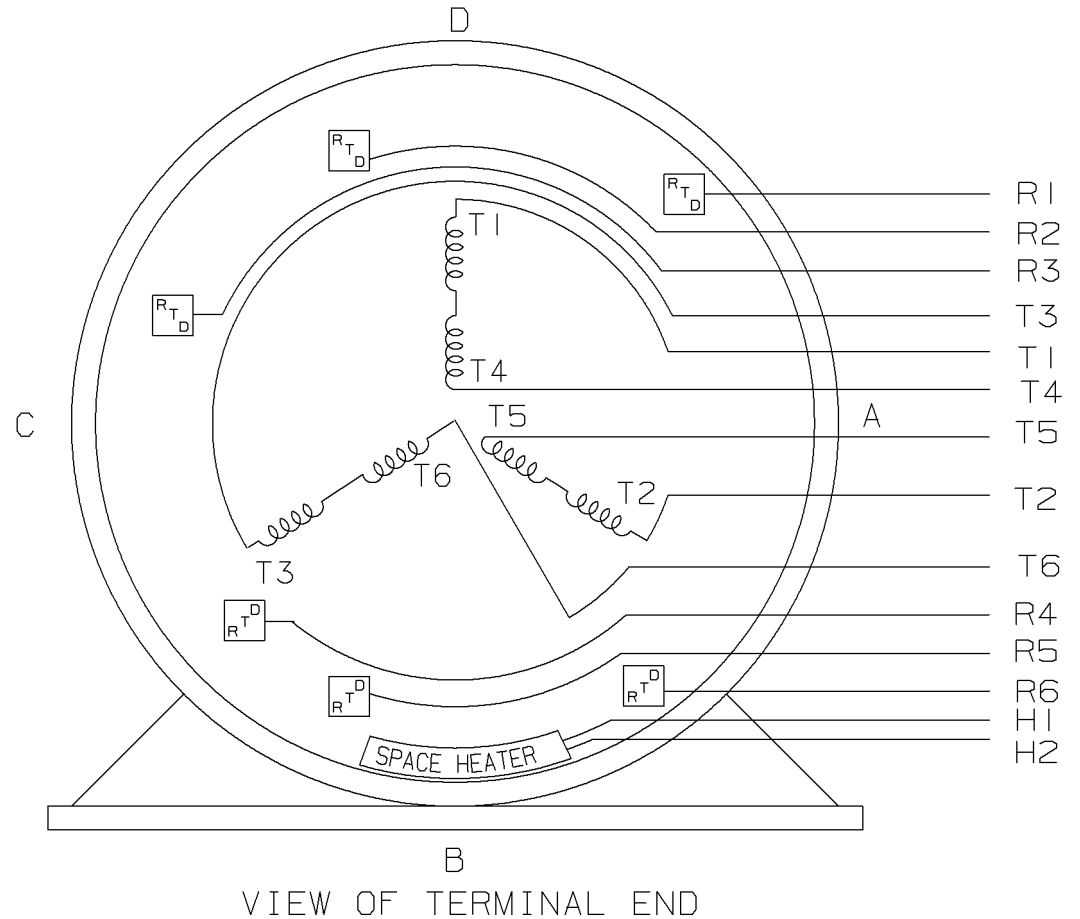
# HIGH VOLTAGE "Y" CONNECTION



## LOW VOLTAGE - DELTA



## THREE PHASE - DUAL VOLTAGE WITH 6 RTD'S 2 PER PHASE AND SPACE HEATER



			✓ MAX. SURFACE ROUGHNESS UNLESS NOTED OTHERWISE		UNLESS OTHERWISE SPECIFIED DIMENSIONS ARE IN INCHES TOL. ON XX±      XXX±.005      XXXX±.0005      ANGLES±		
			MATL SPEC		DRAWN BY CAE 05-07-1999		
			FINISH		CHKD BY		
I			NEW DRAWING		APPD BY		
REV			DATE		DRWG NO		
			CHANGE		A- EE7304AC		
			NAME		PART NAME CONNECTION DIAGRAM - THREE PHASE DUAL VOLTAGE 6 RTD'S & SPACE HEATER		
					CADD FILE NO. EE7304AC		

SHOP BOOK

PURCHASED

DISTRIBUTION - WA - LB - WP - LM

CADD FILE NO.

EE7304AC

ERROR: syntaxerror  
OFFENDING COMMAND: --nostringval--

STACK:

-dictionary-  
-dictionary-  
/Pscript\_WinNT\_Compat  
-dictionary-

# Data Sheet

Date: 1/5/2023

Customer:

Attention:

Submitted by:



5810SVDSL16002

NA FAN

Submittal

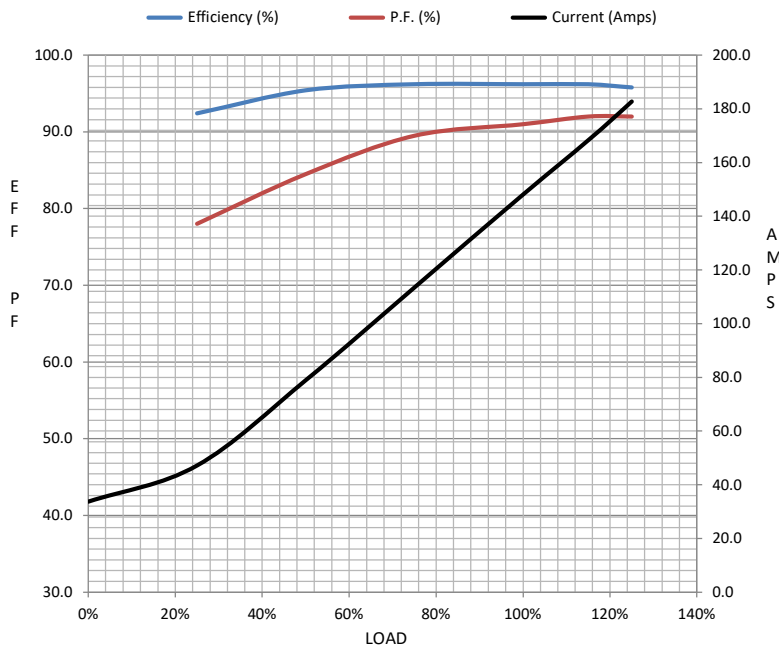
Data @ 4160 V

## Motor Load Data

Load	0%	25%	50%	75%	100%	115%	125%	LR	
Current (Amps)	33.7	47.1	78.9	113	148	168	183	913	
Torque (ft-lb)	0.00	458	914	1,373	1,834	2,110	2,295	1,745	
RPM	3600	3595	3590	3586	3582	3,578	3575	0	
Efficiency (%)		92.4	95.4	96.2	96.2	96.2	95.8		
P.F. (%)	4.0	78.0	84.5	89.5	91.0	92.0	92.0	27.0	

## Motor Speed Data

	LR	Pull-Up	BD	Rated	Idle	Information Block			
Speed (RPM)	0	1800	3400	3582	3600	HP	1250.0		
Current (Amps)	913	841	553	148	33.7	Sync. RPM	3600		
Torque (ft-lb)	1,745	1,400	5,685	1,834	0.00	Frame	5810		



Frame	5810			
Enclosure	DP			
Construction	TDS			
Voltage	2300/4000-4160 V			
Frequency	60 Hz			
Design	B			
LR Code letter	F			
Service Factor	1.15			
Temp Rise @ FL	80 ° C			
Duty	CONT			
Ambient	40 ° C			
Elevation	3,300 feet			
Rotor/Shaft wk²	- Lb-Ft²			
Ref Wdg	VPT1101A NONE			
Sound Pressure @ 1M	100 dBA			
VFD Rating	NONE			
Outline Dwg	MCA8259			
Conn. Diag	EE7304AC			
Additional Specifications:				
0				
0				
EQUIV CKT (OHMS / PHASE)				
R1	R2	X1	X2	Xm
0.0000	0.0000	0.0000	0.0000	0.0000

## Speed -Torque Curve

