

# PRODUCT INFORMATION PACKET

marathon®  
Motors

Model No: 5810STDSDL16001

Catalog No: Y9027

Endurance Series® MODEL-IHP, 1250HP,2P,ODP,5810S,3/60/460,CW/DE,120VSH,WRTD-SH,BRTD PROV



Regal and Marathon are trademarks of Regal Rexnord Corporation or one of its affiliated companies.

©2023 Regal Rexnord Corporation, All Rights Reserved. MC017097E

RegalRexnord

### Nameplate Specifications

Phase	<b>3</b>	Output HP	<b>1250 &amp; 1000 Hp</b>
Output KW	<b>930.0 &amp; 750.0 kW</b>	Voltage	<b>460 &amp; 380 V</b>
Speed	<b>3583 &amp; 2980 rpm</b>	Service Factor	<b>1.15 &amp; 1.15</b>
Frame	<b>5810S</b>	Enclosure	<b>Drip Proof</b>
Thermal Protection	<b>No Protection</b>	Efficiency	<b>96.2 &amp; 95.8 %</b>
Ambient Temperature	<b>40 °C</b>	Frequency	<b>60 &amp; 50 Hz</b>
Current	<b>1337 &amp; 1340 A</b>	Power Factor	<b>91</b>
Duty	<b>Continuous</b>	Insulation Class	<b>H</b>
Design Code	<b>B</b>	KVA Code	<b>G</b>
Drive End Bearing Size	<b>6316</b>	Opp Drive End Bearing Size	<b>6316</b>
UL	<b>Recognized</b>	CSA	<b>Y</b>
CE	<b>N</b>	IP Code	<b>23</b>
Number of Speeds	<b>1</b>		

### Technical Specifications

Electrical Type	<b>Bar Rotator Induction Run</b>	Starting Method	<b>Wye Start Delta Run</b>
Poles	<b>2</b>	Rotation	<b>Fixed Counterclockwise</b>
Mounting	<b>Rigid Base</b>	Motor Orientation	<b>Horizontal</b>
Drive End Bearing	<b>Ball</b>	Opp Drive End Bearing	<b>Ball</b>
Frame Material	<b>Cast Iron</b>	Shaft Type	<b>S</b>
Shaft Diameter	<b>2.875 in</b>	Assembly/Box Mounting	<b>F1/F2 CAPABLE</b>
Outline Drawing	<b>MCA8322</b>	Connection Drawing	<b>EE7340N</b>

This is an uncontrolled document once printed or downloaded and is subject to change without notice. Date Created:06/23/2023

4

3

2

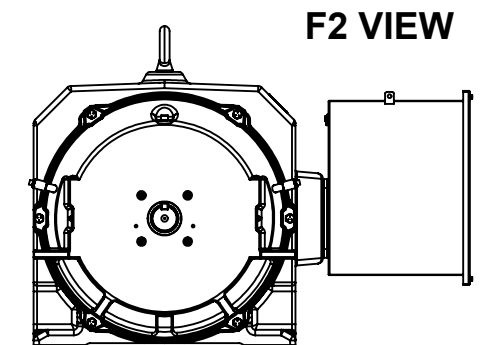
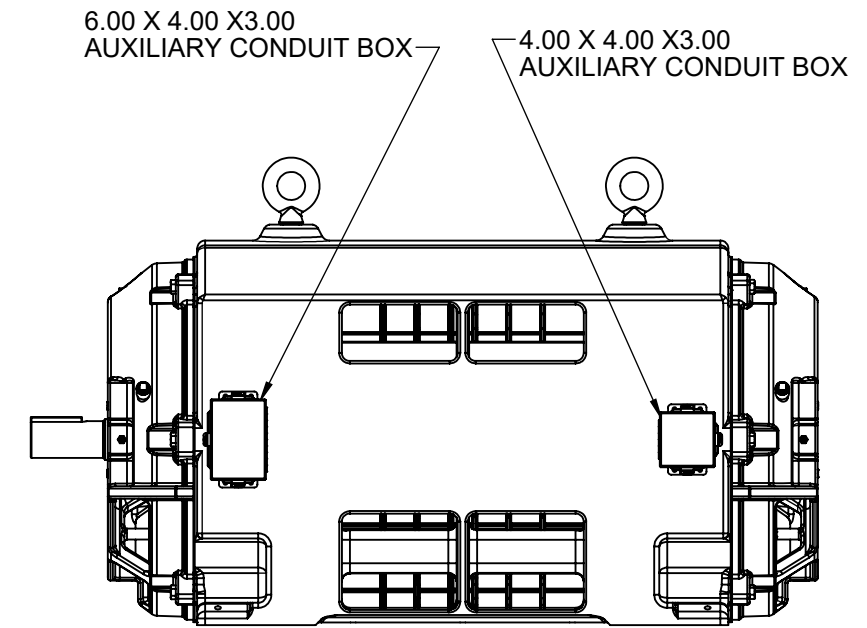
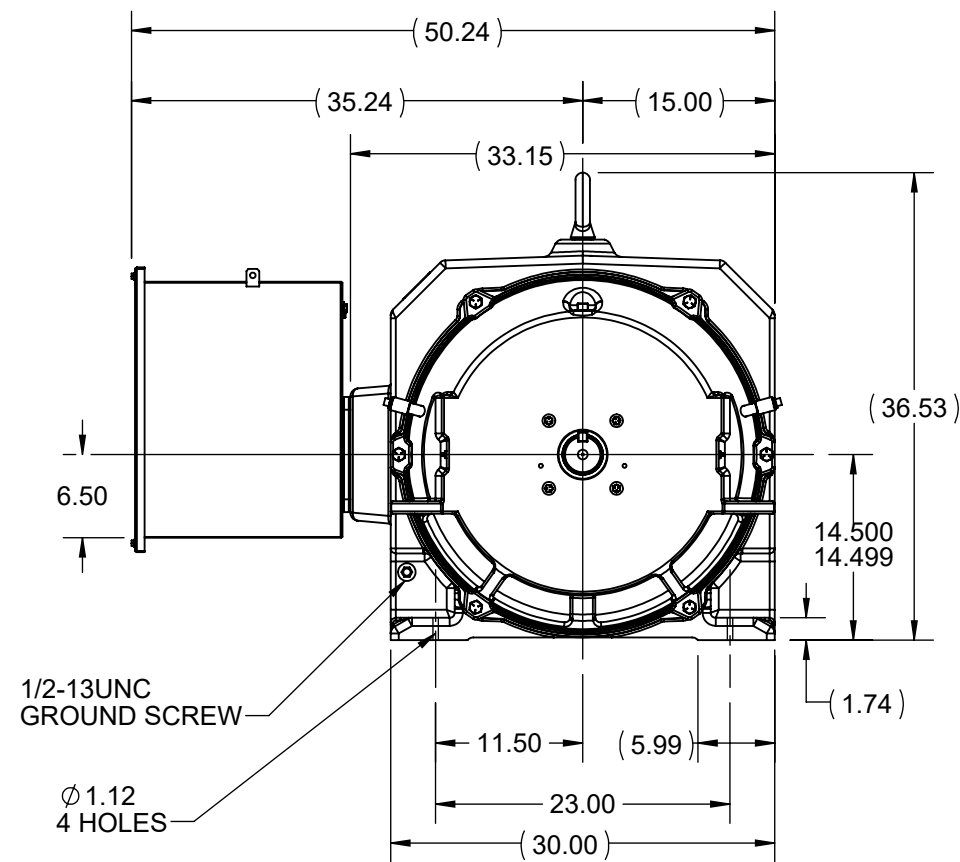
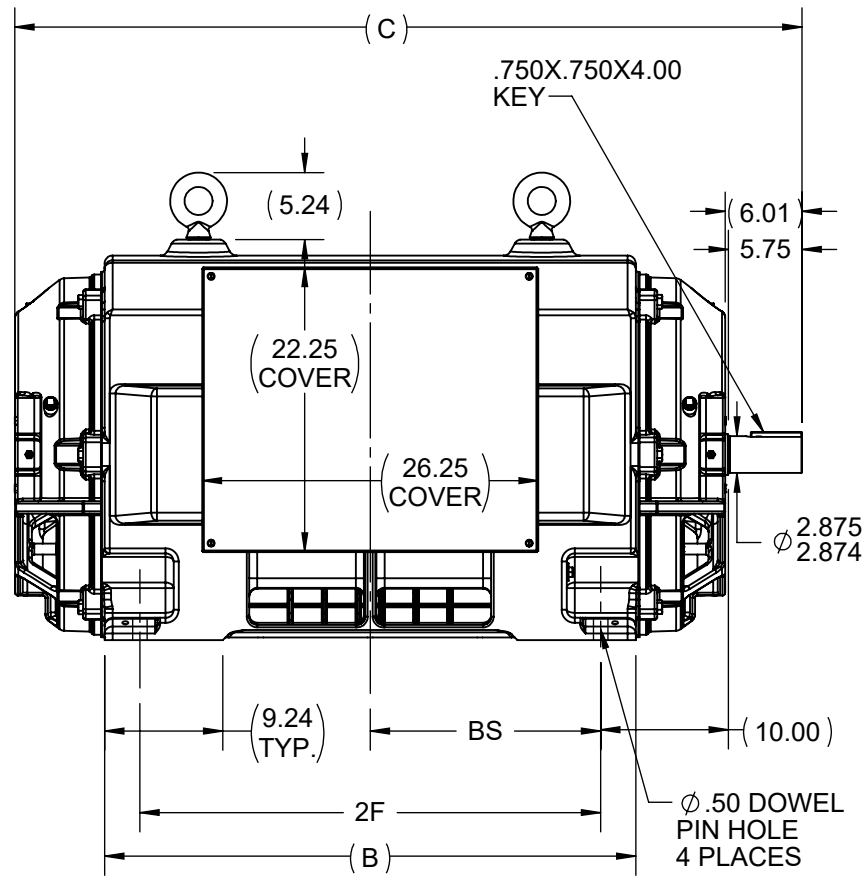
1

B

B

A

A



NOTES:

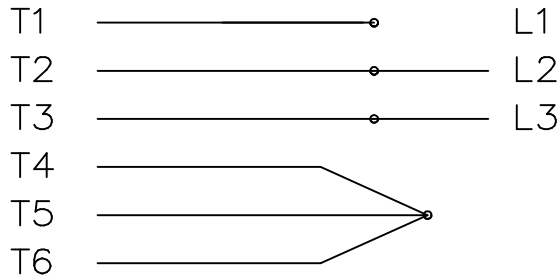
- 1. CONDUIT BOX CAN BE ROTATED IN 90° STEPS.
- 2. CONDUIT BOX CAN BE MOUNTED ON OPPOSITE SIDE BY REMOVING BRACKETS AND TURNING FRAME 180°.
- 3. NAMEPLATES TO BE READ FROM CONDUIT BOX SIDE OF MOTOR

FRAME	B	C	2F	BS
5808S	33.50	53.53	28.00	14.00
5810S	41.50	61.52	36.00	18.00

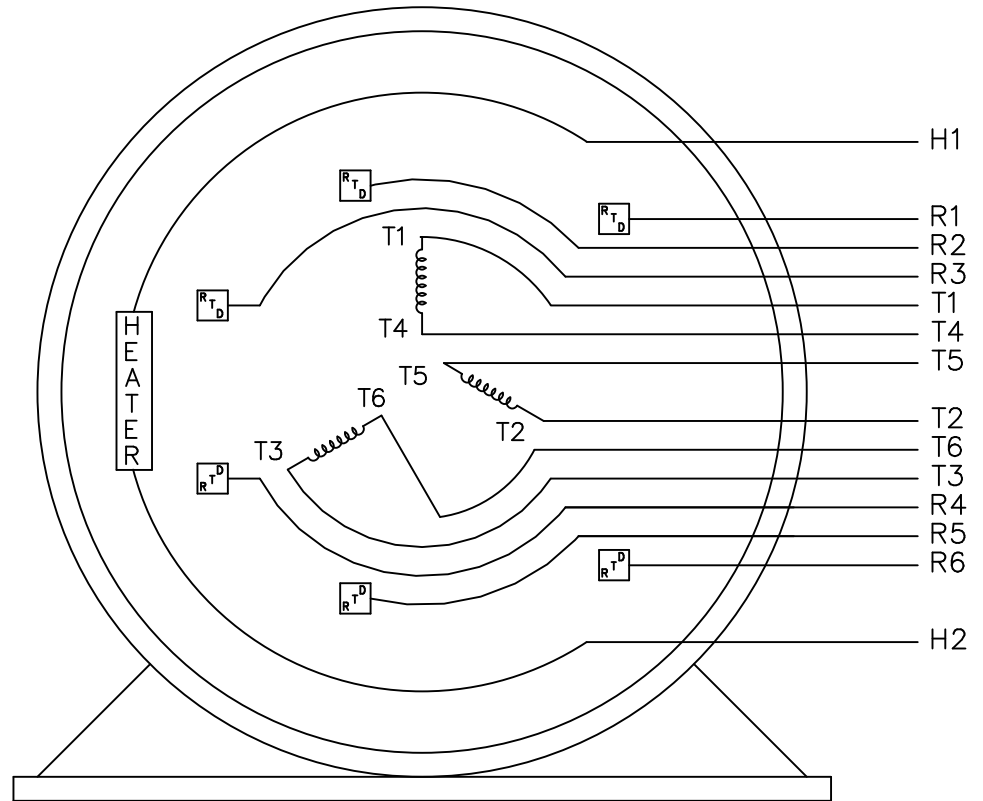
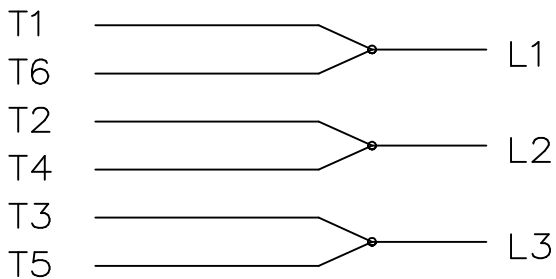
DRAWING REVISION A	REVISION BY	REV DATE/© DATE	TOLERANCES (EXCEPT AS NOTED): DEC. INCH mm ANGLE .X ±0.1 [±3] ±0.5° .XX ±0.01 [±0.3] .XXX ±0.005 [±0.13] .XXXX ±0.0005 [±0.013]		DRAWN BY AKSHAY	<b>REGAL</b> ® Regal Beloit America, Inc.
ECO NMR-0210422	APPROVED BY	DATE	REMOVE BURRS & BREAK SHARP EDGES: .003/.015 [.08/.38] X 45° CORNER FILLETS: R.02 [.5] MACHINED SURFACES: 125/3.2 INCH/mm mm DIMENSIONS IN [BRACKETS] ARE FOR REFERENCE ONLY	DATE 16/09/2021	DESCRIPTION OUTLINE 5800S FR- ODP	
ECO DESCRIPTION NEW DRAWING COPYRIGHT (PER REVISION DATE) REGAL BELOIT AMERICA, INC. ALL RIGHTS RESERVED. PROPRIETARY AND CONFIDENTIAL INFORMATION - THIS DOCUMENT IS THE PROPERTY OF REGAL BELOIT AMERICA, INC. ("OWNER") AND CONTAINS OWNER'S PROPRIETARY INFORMATION. ANY PERSON, CORPORATION OR OTHER FIRM RECEIVING IT IS DEEMED, BY RECEIVING IT, TO AGREE THAT IT, AND/OR ANY PART OF IT, SHALL NOT BE DISCLOSED TO ANY PERSON, CORPORATION OR OTHER ENTITY, DUPLICATED, AND/OR USED, EXCEPT AS EXPRESSLY APPROVED IN WRITING IN ADVANCE BY OWNER. THIS DOCUMENT SHALL BE RETURNED TO OWNER UPON REQUEST. IT MAY BE SUBJECT TO CERTAIN RESTRICTIONS UNDER APPLICABLE EXPORT CONTROL LAWS AND REGULATIONS.				APPROVED BY MILES	MATERIAL	PROCESS/FINISH
				DATE 06/11/2019	DRAWING NUMBER MCA8322	SHEET 1 OF 1
				REFERENCE MCA8255	THIRD ANGLE PROJECTION	

THREE PHASE – Y START  
Δ RUN MOTOR

START



RUN



VIEW OF TERMINAL END

				TOLERANCES UNLESS SPECIFIED			DRAWN KL 05-13-2002		
				DEC.	INCHES		CHK DJK 05-13-2002		
				.X	±.1		APPD EAB 05-13-2002		
				.XX	±.02		SCALE 1=1		
				.XXX	±.005		REF		
1	NEW DRAWING	MU40890	KL 05-13-2002	.XXXX	±.0005	MAT'L.	FMF		
NO.	REVISION		BY & DATE	CHK	ANG	FINISH	PREV		
THIS DRAWING IN DESIGN AND DETAIL IS OUR PROPERTY AND MUST NOT BE USED EXCEPT IN CONNECTION WITH OUR WORK ALL RIGHTS OF DESIGN AND INVENTION ARE RESERVED THIS IS AN ELECTRONICALLY GENERATED DOCUMENT - DO NOT SCALE THIS PRINT				RFP	CAD FILE EE7340N		SIZE	DRAWING NO. PAGE OF	REV.
				DIST WA-LB-WP-SB		A	EE7340N	1	