

PRODUCT INFORMATION PACKET



Model No: 555780-8
Catalog No: 555780-8
B-555780-8 BAFFLE/440/STD/5.00 DP

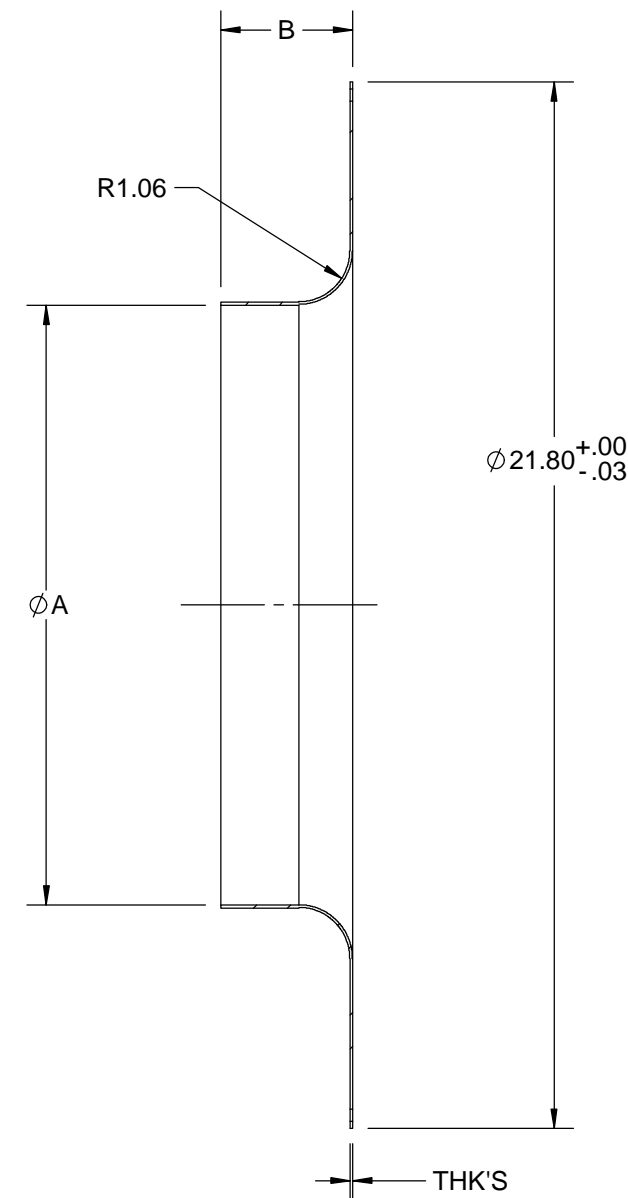
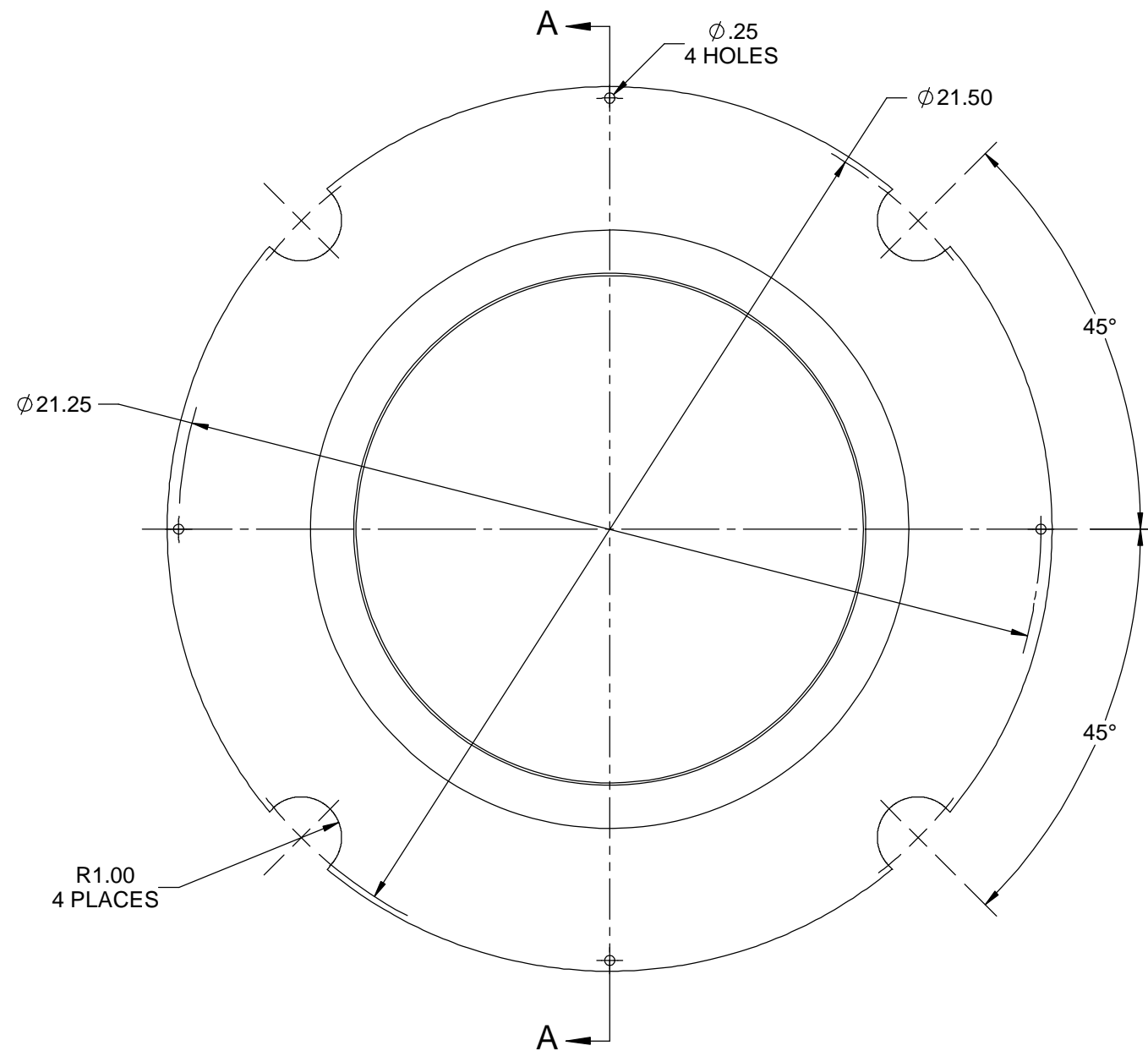
Regal and Marathon are trademarks of Regal Rexnord Corporation or one of its affiliated companies.
©2022 Regal Rexnord Corporation, All Rights Reserved. MC017097E



Nameplate Specifications



Technical Specifications

This is an uncontrolled document once printed or downloaded and is subject to change without notice. Date Created:12/16/2022



SECTION A-A

	DASH	A	B	REMARKS
A	-1	12.50	2.75	
	-2	12.50	4.25	
	-3	11.50	1.50	
	-4	11.50	6.25	
	-5	11.50	8.75	
	-6	11.50	9.50	
	-7	11.50	7.50	
	-8	11.50	5.00	
	-9	11.50	10.75	
	-10	11.50	4.00	2 PC CONSTRUCTION ACCEPTABLE

DRAWING REVISION H		REVISION BY ZR		DATE 08-03-2018		TOLERANCES UNLESS OTHERWISE SPECIFIED: <div> <div>DEC.</div> <div>INCH</div> <div>mm</div> <div>ANGLE</div> </div> <div> <div>.X</div> <div>±0.1</div> <div>[±2.5]</div> <div>±7° 30"</div> </div> <div> <div>.XX</div> <div>±0.02</div> <div>[±0.51]</div> </div> <div> <div>.XXX</div> <div>±0.005</div> <div>[±0.127]</div> </div> <div> <div>.XXXX</div> <div>±0.0005</div> <div>[±0.0127]</div> </div> <div> <div>REMOVE BURRS & BREAK SHARP</div> <div>EDGES: .003/.015 [0.076/3.81] X 45°</div> <div>CORNER FILLETS: R.02 [51]</div> <div>MACHINED SURFACES: 200</div> <div>INCH</div> <div>5.1</div> <div>mm</div> </div> <div>mm SHOWN IN [BRACKETS]</div>		DRAWN BY TJW		 <div>Regal Beloit America, Inc.</div>	
ECO ECO-0150070		APPROVED BY DJK		DATE 08-03-2018				DATE 06-13-2013			
ECO DESCRIPTION						DESCRIPTION					
<div>ADDED DASH 10</div> <div>COPYRIGHT REGAL BELOIT AMERICA, INC. ALL RIGHTS RESERVED.</div> <div>PROPRIETARY AND CONFIDENTIAL INFORMATION - THIS DOCUMENT IS THE PROPERTY OF REGAL BELOIT AMERICA, INC. ("OWNER") AND CONTAINS OWNER'S PROPRIETARY INFORMATION. ANY PERSON, CORPORATION OR OTHER FIRM RECEIVING IT IS DEEMED, BY RECEIVING IT, TO AGREE THAT IT, AND/OR ANY PART OF IT, SHALL NOT BE DISCLOSED TO ANY PERSON, CORPORATION OR OTHER ENTITY, DUPLICATED, AND/OR USED, EXCEPT AS EXPRESSLY APPROVED IN WRITING IN ADVANCE BY OWNER. THIS DOCUMENT SHALL BE RETURNED TO OWNER UPON REQUEST. IT MAY BE SUBJECT TO CERTAIN RESTRICTIONS UNDER APPLICABLE EXPORT CONTROL LAWS AND REGULATIONS.</div>						<div>BAFFLE-PLATE</div> <div>440 FR. - 4 & 6 POLE - DR. PR.</div>					
						REFERENCE		MATERIAL		PROCESS/FINISH	
						THIRD ANGLE PROJECTION		SIZE		DRAWING NUMBER	
								16 GA. (.0598) SH STL		SHEET	
								B		1 OF 1	
								555780			