

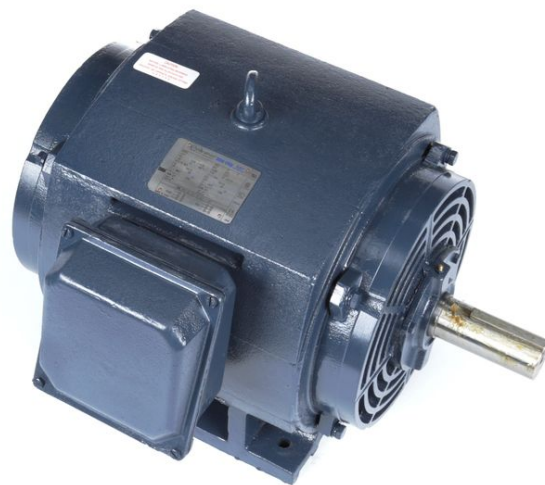
PRODUCT INFORMATION PACKET

Model No: 508UTDS16077

Catalog No: H821B

General Purpose Motors, Drip Proof, 350 HP, 3 Ph, 60 Hz, 460 V, 1188 RPM, 508UZ

General Purpose Motors



Regal and Marathon are trademarks of Regal Rexnord Corporation or one of its affiliated companies.
©2022 Regal Rexnord Corporation, All Rights Reserved. MC017097E

Nameplate Specifications

Output HP	350 Hp	Output KW	260.0 kW
Frequency	60 Hz	Voltage	460 V
Current	420.0 A	Speed	1188 rpm
Service Factor	1	Phase	3
Efficiency	95.8 %	Power Factor	81.5
Duty	Continuous	Insulation Class	F
Design Code	B	KVA Code	G
Frame	508UZ	Enclosure	Drip Proof
Thermal Protection	No	Ambient Temperature	40 °C
Drive End Bearing Size	6322	Opp Drive End Bearing Size	6318
UL	Recognized	CSA	Y
CE	Y	IP Code	22
Number of Speeds	1		

Technical Specifications

Electrical Type	Squirrel Cage Induction Run	Starting Method	Part Wdg Start & Wye Start Delta Run
Poles	6	Rotation	Reversible
Resistance Main	.012 Ohms	Mounting	Rigid Base
Motor Orientation	Horizontal	Drive End Bearing	Ball
Opp Drive End Bearing	Ball	Frame Material	Cast Iron
Shaft Type	U Special Extension	Overall Length	27.50 in
Shaft Diameter	4.125 in	Shaft Extension	11.62 in
Assembly/Box Mounting	F1/F2 CAPABLE		
Outline Drawing	B-SS557360-2800	Connection Drawing	A-EE7300CB

4

3

Uncontrolled Copy

2

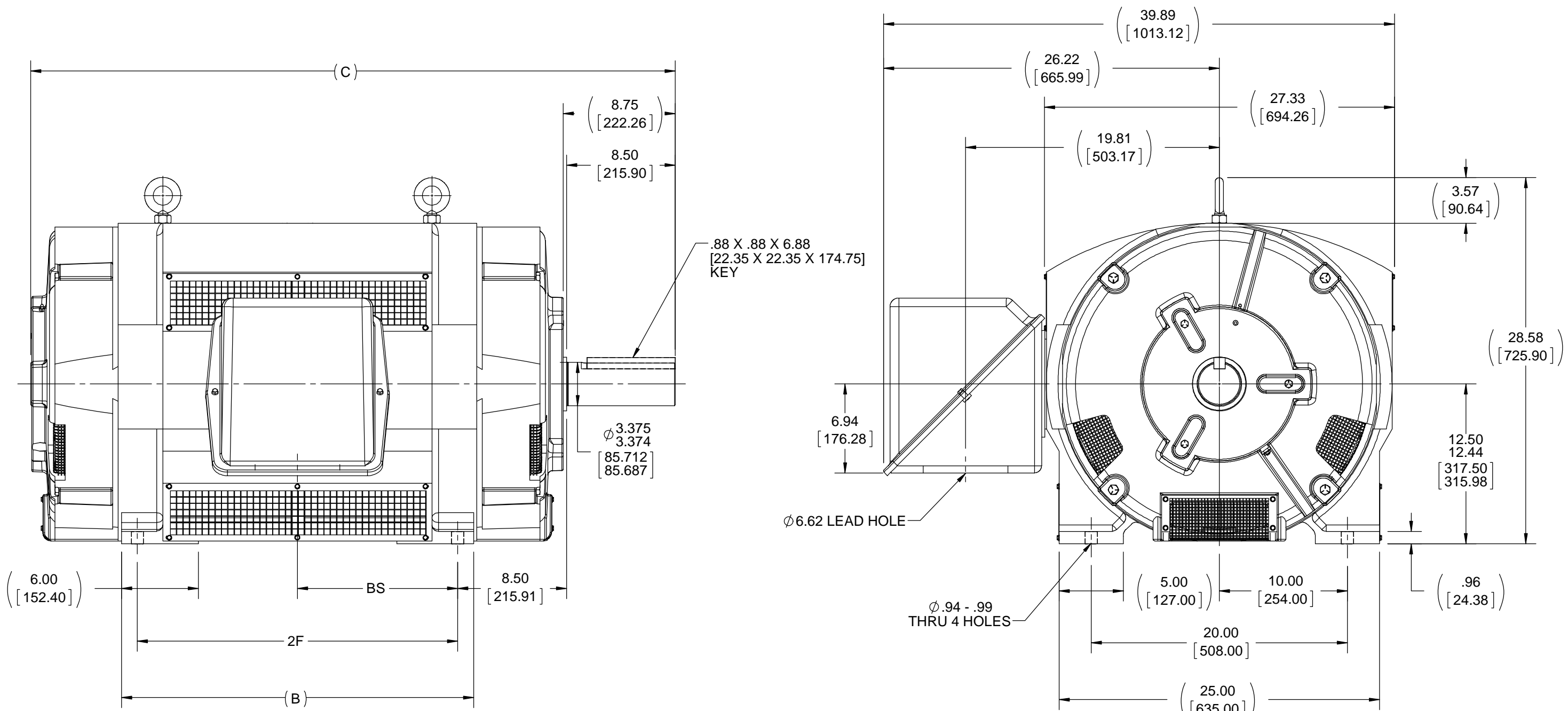
1

B

B

A

A



NOTES:

- 1. CONDUIT BOX CAN BE ROTATED IN 90° STEPS
- 2. CONDUIT BOX CAN BE MOUNTED ON OPPOSITE SIDE BY REMOVING BRACKETS AND TURNING FRAME 180°
- 3. NAMEPLATES TO BE READ FROM CONDUIT BOX SIDE OF MOTOR

DASH	FRAME	B	C	2F	BS
2800	508U	27.50 [698.50]	50.32 [1278.13]	25.00 [635.00]	12.50 [317.50]
3500	510U	34.50 [876.30]	57.32 [1455.93]	32.00 [812.80]	16.00 [406.40]

DRAWING REVISION A	REVISION BY W. JOERGER	DATE 09-07-2017
ECO ECO-0112562	APPROVED BY E. HEIL	DATE 09-07-2017
ECO DESCRIPTION RELEASED FOR PRODUCTION		
<small>COPYRIGHT REGAL BELOIT AMERICA, INC. ALL RIGHTS RESERVED. PROPRIETARY AND CONFIDENTIAL INFORMATION - THIS DOCUMENT IS THE PROPERTY OF REGAL BELOIT AMERICA, INC. ("OWNER") AND CONTAINS OWNER'S PROPRIETARY INFORMATION. ANY PERSON, CORPORATION OR OTHER FIRM RECEIVING IT IS DEEMED, BY RECEIVING IT, TO AGREE THAT IT, AND/OR ANY PART OF IT, SHALL NOT BE DISCLOSED TO ANY PERSON, CORPORATION OR OTHER ENTITY, DUPLICATED, AND/OR USED, EXCEPT AS EXPRESSLY APPROVED IN WRITING IN ADVANCE BY OWNER. THIS DOCUMENT SHALL BE RETURNED TO OWNER UPON REQUEST. IT MAY BE SUBJECT TO CERTAIN RESTRICTIONS UNDER APPLICABLE EXPORT CONTROL LAWS AND REGULATIONS.</small>		

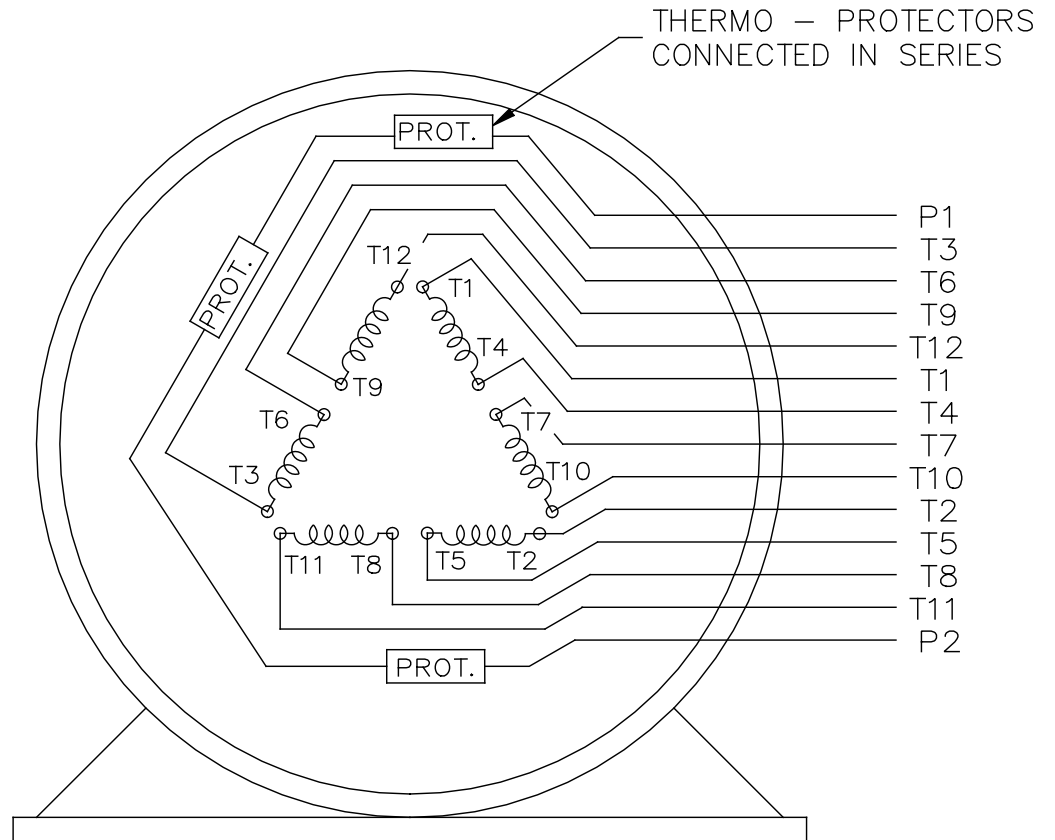
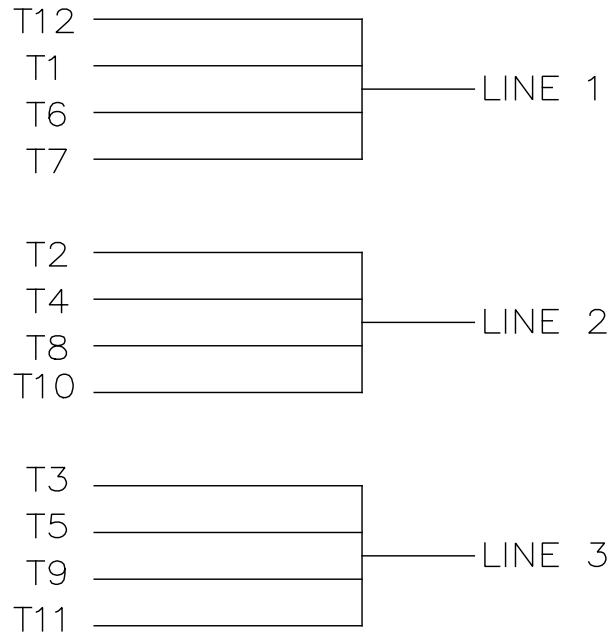
TOLERANCES UNLESS OTHERWISE SPECIFIED:

DEC.	INCH	mm	ANGLE
.X	±0.1	[±2.5]	±7° 30"
.XX	±0.03	[±0.76]	
.XXX	±0.005	[±0.127]	
.XXXX	±0.0005	[±0.0127]	

REMOVE BURRS & BREAK SHARP EDGES: .003/.015 [0.076/.381] X 45°
CORNER FILLETS: R.02 [0.51]
MACHINED SURFACES: 200 INCH/mm 5.1
mm SHOWN IN [BRACKETS]

DRAWN BY W. JOERGER	DATE 09-07-2017
APPROVED BY E. HEIL	DATE 09-07-2017
REFERENCE	
THIRD ANGLE PROJECTION	

Regal Beloit America, Inc.	
DESCRIPTION OUTLINE 508/510U FR - DR PR - SCREENED	
MATERIAL	PROCESS/FINISH
SIZE B	DRAWING NUMBER SS557360
SHEET 1 OF 1	



VIEW OF TERMINAL END

				TOLERANCES UNLESS SPECIFIED		REGAL REGAL - BELOIT CORPORATION	DRAWN KL 02-27-2003			
				DEC.	INCHES		CHK GFH 03-03-2003			
				.X	± -		APPD JES 03-03-2003			
				.XX	± -	TITLE CONNECTION DIAGRAM - EXTERNAL 12 LEAD SINGLE VOLTAGE	SCALE	1=1		
				.XXX	± -		REF			
A	CHANGED TO REGAL TITLEBLOCK	ECO-0108299	WGJ 08-18-2016	EMH	.XXXX	MAT'L.	FMF			
NO.	REVISION	BY & DATE	CHK	ANG	± -	FINISH	PREV			
THIS DRAWING IN DESIGN AND DETAIL IS OUR PROPERTY AND MUST NOT BE USED EXCEPT IN CONNECTION WITH OUR WORK ALL RIGHTS OF DESIGN AND INVENTION ARE RESERVED THIS IS AN ELECTRONICALLY GENERATED DOCUMENT - DO NOT SCALE THIS PRINT				RFP	CAD FILE EE7300CB		SIZE	DRAWING NO.	PAGE OF	REV.
				DIST			A	EE7300CB		

CERTIFICATION DATA SHEET

Model#: 508UTDS16077 AN **WINDING#:** T508649 NONE 2
CONN. DIAGRAM: A-EE7300CB **ASSEMBLY:** F1/F2 CAPABLE
OUTLINE: B-SS513103-2800

TYPICAL MOTOR PERFORMANCE DATA

HP	KW	SYNC. RPM	F.L. RPM	FRAME	ENCLOSURE	KVA CODE	DESIGN
350	260	1200	1188	508U	DP	G	B

PH	Hz	VOLTS	FL AMPS	START TYPE	DUTY	INSL	S.F	AMB°C	ELEVATION
3	60	460	420	PWS & YDRUN	CONTINUOUS	F1	1.0	40	3300

FULL LOAD EFF: 95.8	3/4 LOAD EFF: 95.8	1/2 LOAD EFF: 95.4	GTD. EFF	ELEC. TYPE	NO LOAD AMPS
FULL LOAD PF: 81.5	3/4 LOAD PF: 78	1/2 LOAD PF: 68	95	SQ CAGE IND RUN	160

F.L. TORQUE	LOCKED ROTOR AMPS	L.R. TORQUE	B.D. TORQUE	F.L. RISE°C
1548 LB-FT	2550	3300 LB-FT 210	3800 LB-FT 240	70

SOUND PRESSURE @ 3 FT.	SOUND POWER	ROTOR WK^2	MAX. WK^2	SAFE STALL TIME	STARTS /HOUR	APPROX. MOTOR WGT
78 dBA	88 dBA	220 LB-FT^2	- LB-FT^2	15 SEC.	-	3250 LBS.

***** SUPPLEMENTAL INFORMATION *****

DE BRACKET TYPE	ODE BRACKET TYPE	MOUNT TYPE	ORIENTATION	SEVERE DUTY	HAZARDOUS LOCATION	DRIP COVER	SCREENS	PAINT
STANDARD	STANDARD	RIGID	HORIZONTAL	FALSE	NONE	FALSE	RODENT	BLUE (ENAMEL)

BEARINGS		GREASE	SHAFT TYPE	SPECIAL DE	SPECIAL ODE	SHAFT MATERIAL	FRAME MATERIAL
DE	OPE						
BALL	BALL	POLYREX EM	U	NONE	NONE	1045 HOT ROLLED (C-204)	CAST IRON
6322	6318						

THERMO-PROTECTORS				THERMISTORS	CONTROL	SPACE /n HEATERS
THERMOSTATS	PROTECTORS	WDG RTDs	BRG RTDs			
TSTATS (N/C)	NOT	NONE	NONE	NONE	FALSE	NONE VOLTS

If Inverter equals NONE, contact factory for further information

*
N
O
T
E
S
*

INVERTER TORQUE: NONE
INV. HP SPEED RANGE: NONE
ENCODER: NONE
NONE NONE
NONE NONE PPR
BRAKE: NONE NONE
NONE P/N NONE
NONE NONE
NONE FT-LB NONE V NONE Hz

DATE: 07/03/2017 02:17:19 AM
 FORM 3531 REV.3 02/07/99
 ** Subject to change without notice.

Data Sheet

Date: 1/28/2019
 Customer: _____
 Attention: _____
 Submitted by: DINESH SUDDULA



508UTDS16077

Submittal

Data @ **460 V**

Motor Load Data

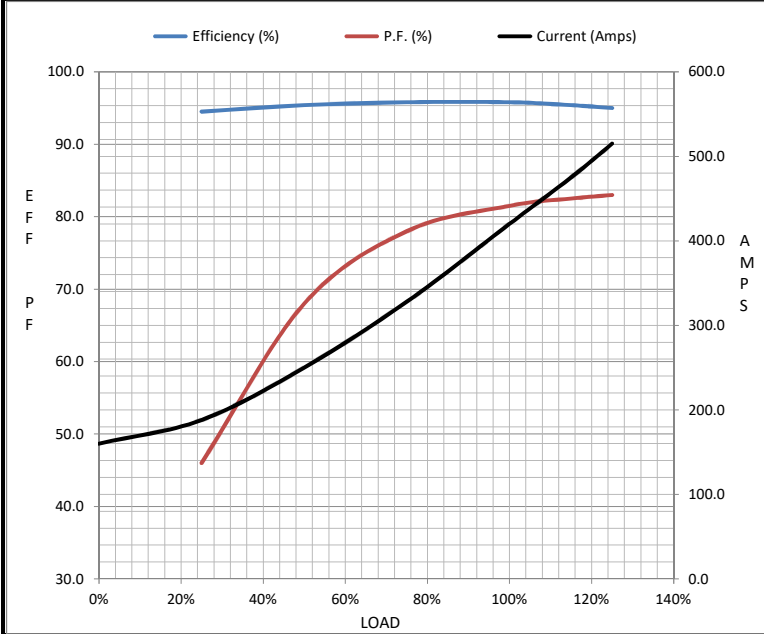
Load	0%	25%	50%	75%	100%	115%	125%	LR
Current (Amps)	160	188	250	328	420	475	515	2,550
Torque (ft-lb)	0.00	384	770	1,158	1,548	1,783	1,940	3,300
RPM	1200	1196	1194	1190	1188	1,186	1184	0
Efficiency (%)		94.5	95.4	95.8	95.8	95.4	95.0	
P.F. (%)	2.5	46.0	68.0	78.0	81.5	82.5	83.0	34.0

Motor Speed Data

	LR	Pull-Up	BD	Rated	Idle
Speed (RPM)	0	600	1125	1188	1200
Current (Amps)	2,550	2,250	1,550	420	160
Torque (ft-lb)	3,300	2,800	3,800	1,548	0.00

Information Block

HP	350.0			
Sync. RPM	1200			
Frame	508			
Enclosure	DP			
Construction	TDS			
Voltage	460 V			
Frequency	60 Hz			
Design	B			
LR Code letter	G			
Service Factor	1			
Temp Rise @ FL	70 °C			
Duty	CONT			
Ambient	40 °C			
Elevation	3,300 feet			
Rotor/Shaft wk ²	220 Lb-Ft ²			
Ref Wdg	T508649 NONE			
Sound Pressure @ 1M	78 dBA			
VFD Rating	NONE			
Outline Dwg	B-SS513103-2800			
Conn. Diag	A-EE7300CB			
Additional Specifications:				
0				
0				
EQUIV CKT (OHMS / PHASE)				
R1	R2	X1	X2	Xm
0.0080	0.0070	0.0580	0.1040	1.6320



Speed - Torque Curve

