

PRODUCT INFORMATION PACKET

Model No: 505UTDS1590

Catalog No: Y220

Other Purpose Motor, 150 HP, 3 Ph, 60 Hz, 460/796 V, 1200 RPM, 505TZ Frame, DP



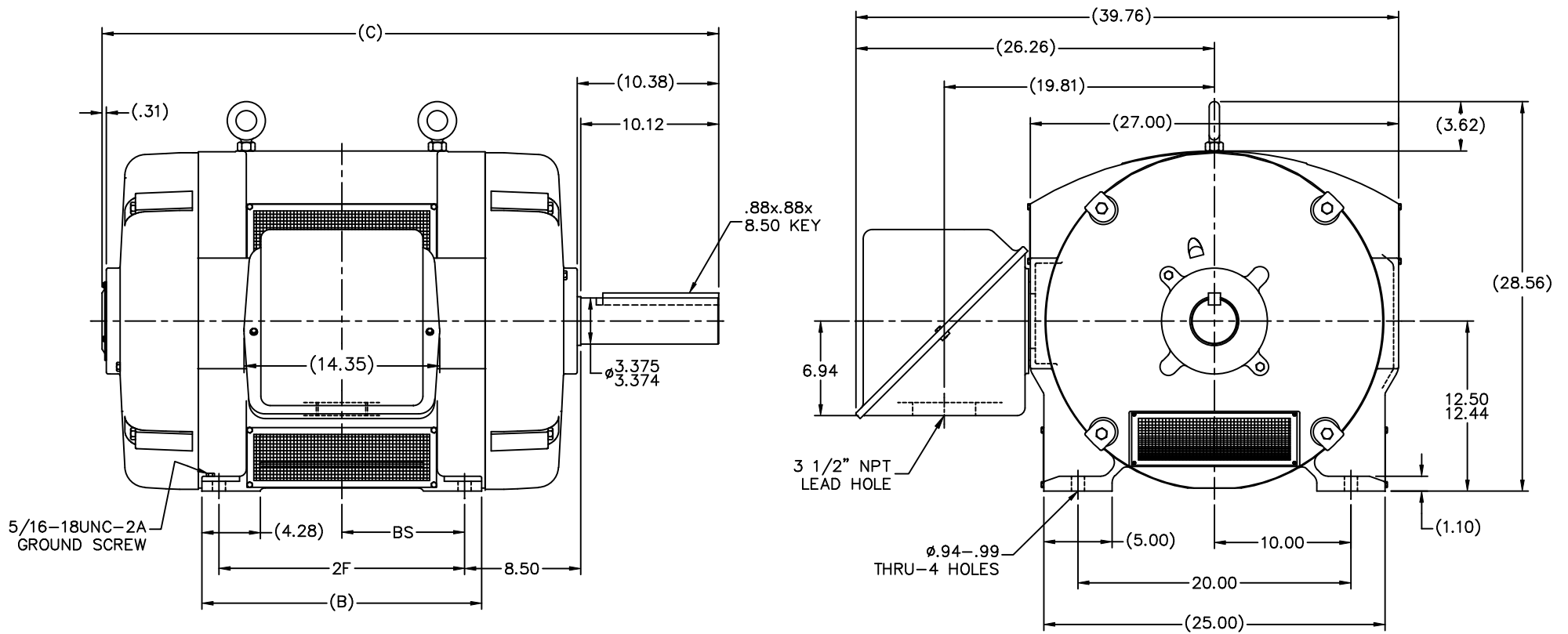
Regal and are trademarks of Regal Rexnord Corporation or one of its affiliated companies.
©2022 Regal Rexnord Corporation, All Rights Reserved. MC017097E

Nameplate Specifications

Output HP	150 Hp	Output KW	112.0 kW
Frequency	60 Hz	Voltage	460/796 V
Current	180.0/104.0 A	Speed	1125 rpm
Service Factor	1.15	Phase	3
Efficiency	91 %	Power Factor	87
Duty	Oil Well	Insulation Class	F
Design Code	D	KVA Code	H
Frame	505TZ	Enclosure	Drip Proof
Thermal Protection	No Protection	Ambient Temperature	40 °C
Drive End Bearing Size	NU319	Opp Drive End Bearing Size	6319
UL	No	CSA	N
CE	N	IP Code	22
Number of Speeds	1		

Technical Specifications

Electrical Type	Squirrel Cage Induction Run	Starting Method	Across The Line
Poles	6	Rotation	Reversible
Resistance Main	.028 Ohms	Mounting	Rigid Base
Motor Orientation	Horizontal	Drive End Bearing	Roller
Opp Drive End Bearing	Ball	Frame Material	Cast Iron
Shaft Type	Single Special Extension	Overall Length	45.19 in
Shaft Diameter	3.375 in	Shaft Extension	10.12 in
Assembly/Box Mounting	F1/F2 Capable		
Connection Drawing	A-EE7304H	Outline Drawing	B-SS513940-2100

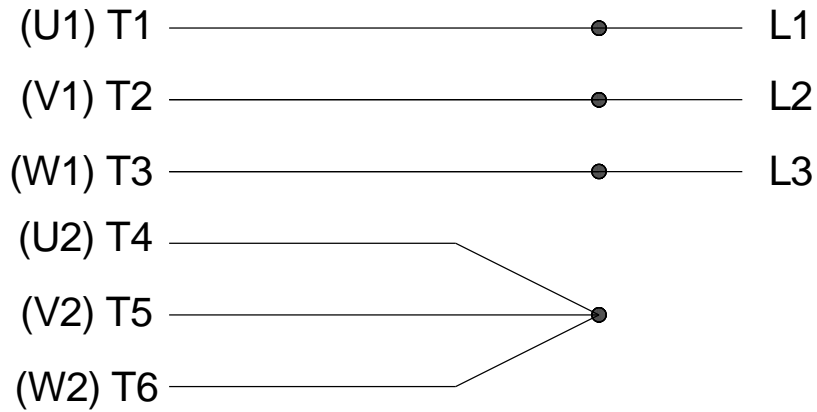


NOTES:

1. CONDUIT BOX CAN BE ROTATED IN 90° STEPS.
2. CONDUIT BOX CAN BE MOUNTED ON OPPOSITE SIDE BY REMOVING BRACKETS AND TURNING FRAME 180°.
3. NAMEPLATE TO BE READ FROM CONDUIT BOX SIDE OF MOTOR.

						TOLERANCES UNLESS SPECIFIED		MARATHON ELECTRIC		DRAWN DA 02-06-1991	
						DEC.	INCHES			CHK	ML 02-06-1991
						.X	±.1			APPD	GK 02-06-1991
3 REDRAWN TO AUTOCAD						KL	03-01-2005	.XX	±.03	TITLE OUTLINE - SPL. LEAD HOLE SIZE	
2 CORRECT KEY LENGTH & RE'VD C'BOX GEO. MU3582						KL	02-26-2001	.XXX	±.005	505UZ FR. - DR.PR. - SCREENED	
1 NEW DRAWING CN 13005						DA	02-06-1991	.XXXX	±.0005	SCALE 9-64	
NO. REVISION						BY & DATE		CHK	ANG	FINISH	REF (OIL FIELD)
THIS DRAWING IN DESIGN AND DETAIL IS OUR PROPERTY AND MUST NOT BE USED EXCEPT IN CONNECTION WITH OUR WORK ALL RIGHTS OF DESIGN AND INVENTION ARE RESERVED THIS IS AN ELECTRONICALLY GENERATED DOCUMENT - DO NOT SCALE THIS PRINT						RFP		ANG	±7'30"	MATL	FMF
DASH	FRAME	B	C	2F	BS			CAD FILE SS513940		PREV	
2100	505UZ	20.50	45.19	18.00	9.00			SIZE B		DRAWING NO. SS513940	PAGE OF 3
						DIST WA					

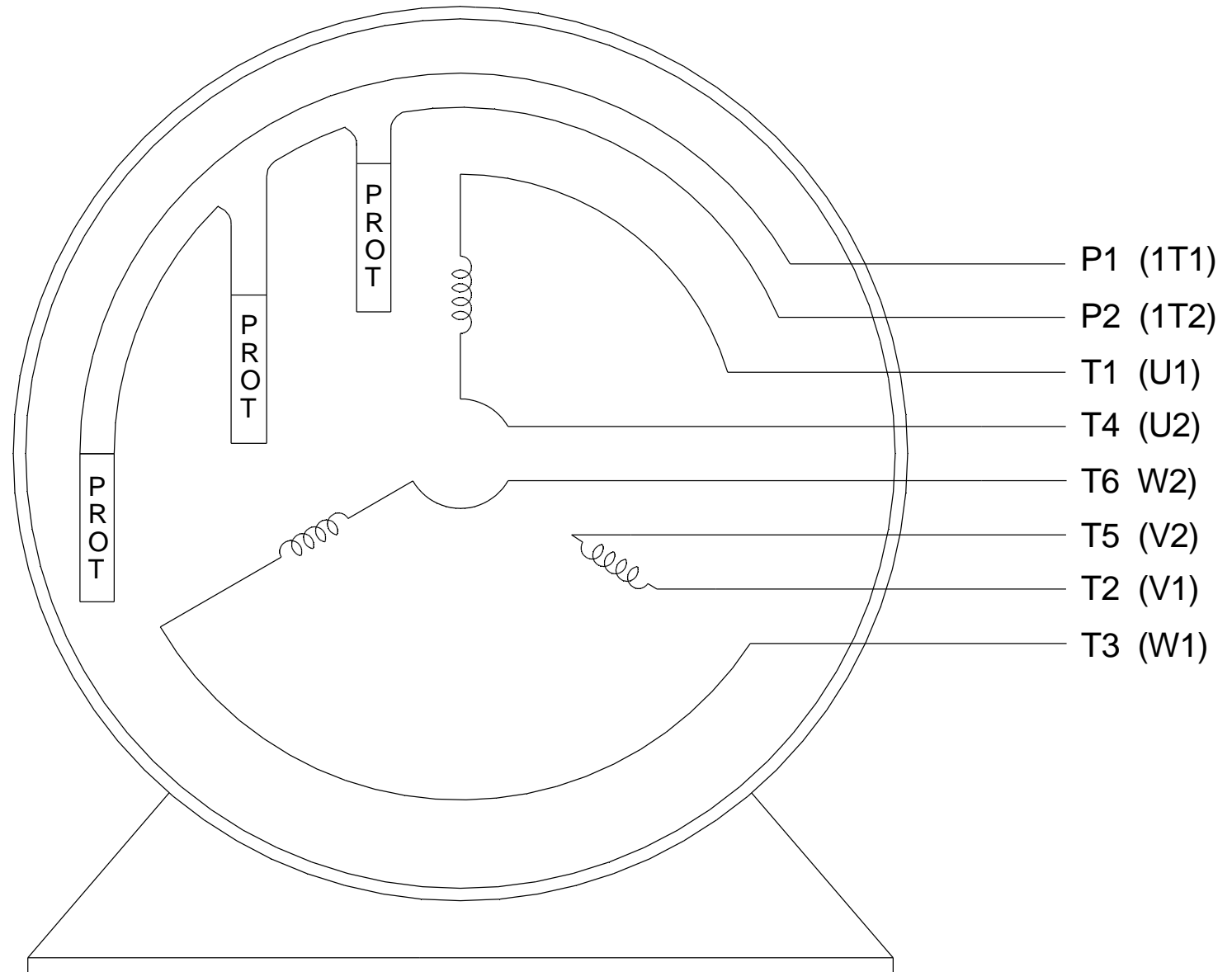
"Y" RUN




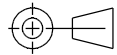
"Δ" BOOST



WHEN MORE THAN ONE
PROTECTOR IS USED,
CONNECT IN SERIES



VIEW OF TERMINAL END
3 ∅ DUAL VOLTAGE MOTOR

DRAWING REVISION A	REVISION BY HV	DATE 12-17-2014	TOLERANCES UNLESS OTHERWISE SPECIFIED: DEC. INCH mm ANGLE .X ±0.1 [±2.5] ±0.5° .XX ±0.01 [±0.25] XXX ±0.005 [±0.127] .XXXX ±0.0005 [±0.0127] REMOVE BURRS & BREAK SHARP EDGES: .003/.015 [.076/.381] CORNER FILLETS: .02 [.51] MACHINED SURFACES: 125/3.2 INCH/mm	DRAWN BY BLR	 Regal Beloit America, Inc.	
ECO ECO-0065198	APPROVED BY EMH	DATE 12-17-2014		DATE 03-07-1998		DESCRIPTION CONN DIAGRAM-EXTERNAL DUAL VOLTAGE - 3 PHASE - 6 LEAD DELTA - Y
ECO DESCRIPTION REDRAWN IN SOLIDWORKS, REMOVED GRND. NOTE			THIRD ANGLE PROJECTION 	DATE 03-23-1998	MATERIAL	PROCESS/FINISH
COPYRIGHT REGAL BELOIT AMERICA, INC. ALL RIGHTS RESERVED. PROPRIETARY AND CONFIDENTIAL INFORMATION - THIS DOCUMENT IS THE PROPERTY OF REGAL BELOIT AMERICA, INC. ("OWNER") AND CONTAINS OWNER'S PROPRIETARY INFORMATION. ANY PERSON, CORPORATION OR OTHER FIRM RECEIVING IT IS DEEMED, BY RECEIVING IT, TO AGREE THAT IT, AND/OR ANY PART OF IT, SHALL NOT BE DISCLOSED TO ANY PERSON, CORPORATION OR OTHER ENTITY, DUPLICATED, AND/OR USED, EXCEPT AS EXPRESSLY APPROVED IN WRITING IN ADVANCE BY OWNER. THIS DOCUMENT SHALL BE RETURNED TO OWNER UPON REQUEST. IT MAY BE SUBJECT TO CERTAIN RESTRICTIONS UNDER APPLICABLE EXPORT CONTROL LAWS AND REGULATIONS.				REFERENCE	SIZE A	DRAWING NUMBER EE7304H