

# PRODUCT INFORMATION PACKET

**marathon**<sup>®</sup>  
Motors

Model No: 5011LTFS16549

Catalog No: 5011LTFS16549

XRI<sup>®</sup>-SD Severe Duty Motor, 500 HP, 3 Ph, 60 Hz, 460 V, 1800 RPM, 5011L Frame, TEFC

Regal and Marathon are trademarks of Regal Rexnord Corporation or one of its affiliated companies.

©2023 Regal Rexnord Corporation, All Rights Reserved. MC017097E

**RegalRexnord**

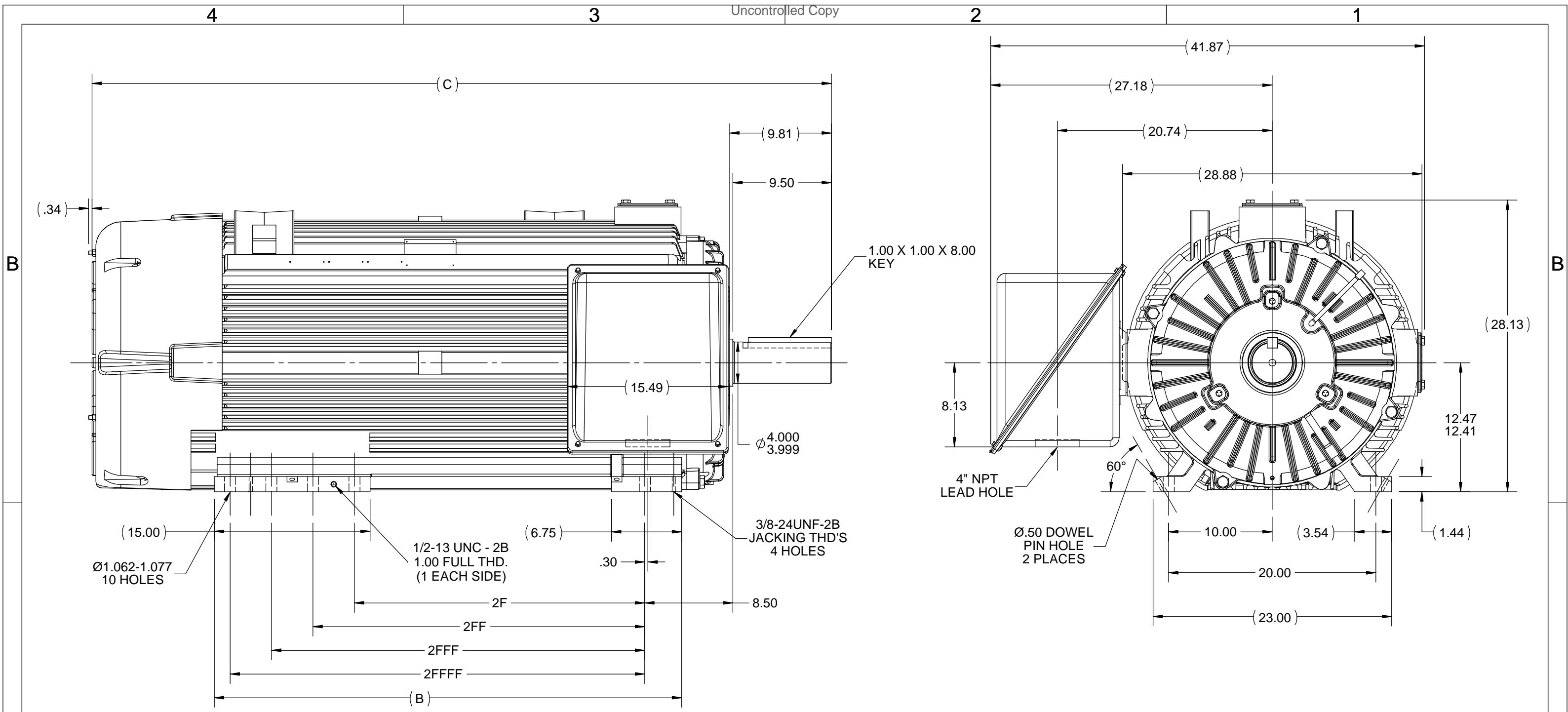
### Nameplate Specifications

Output HP	<b>500 Hp</b>	Output KW	<b>370.0 kW</b>
Frequency	<b>60 Hz</b>	Voltage	<b>460 V</b>
Current	<b>555.0 A</b>	Speed	<b>1788 rpm</b>
Service Factor	<b>1.15</b>	Phase	<b>3</b>
Efficiency	<b>96.2 %</b>	Power Factor	<b>88</b>
Duty	<b>Continuous</b>	Insulation Class	<b>H</b>
Design Code	<b>B</b>	KVA Code	<b>G</b>
Frame	<b>5011L</b>	Enclosure	<b>Totally Enclosed Fan Cooled</b>
Thermal Protection	<b>Thermostat</b>	Ambient Temperature	<b>40 °C</b>
Drive End Bearing Size	<b>6324</b>	Opp Drive End Bearing Size	<b>6318</b>
UL	<b>No</b>	CSA	<b>Y</b>
CE	<b>Y</b>	IP Code	<b>56</b>
Number of Speeds	<b>1</b>		

### Technical Specifications

Electrical Type	<b>Squirrel Cage Inverter Rated</b>	Starting Method	<b>Line Or Inverter</b>
Poles	<b>4</b>	Rotation	<b>Reversible</b>
Resistance Main	<b>.004 Ohms</b>	Mounting	<b>Rigid Base</b>
Motor Orientation	<b>Horizontal</b>	Drive End Bearing	<b>Ball</b>
Opp Drive End Bearing	<b>Ball</b>	Frame Material	<b>Cast Iron</b>
Shaft Type	<b>L</b>	Shaft Diameter	<b>4.000 in</b>
Assembly/Box Mounting	<b>F1/F2 CAPABLE</b>	Inverter Load	<b>CONSTANT 2:1</b>
Connection Drawing	<b>A-EE7300DN</b>	Outline Drawing	<b>B-SS518525-4950</b>

This is an uncontrolled document once printed or downloaded and is subject to change without notice. Date Created:01/19/2023



- NOTE:  
 1. MAIN CONDUIT BOX CAN BE ROTATED IN 90° STEPS.  
 2. NAMEPLATES TO BE READ FROM MAIN CONDUIT BOX SIDE OF THE MOTOR.  
 3. MOTOR WEIGHT (MAXIMUM) = 5,500 LBS.

DASH	FRAME	B	C	2F	2FF	2FFF	2FFFF
4950	5009L	45.05	71.30	28.00	---	---	---
4950	5010L	45.05	71.30	---	32.00	---	---
4950	5011L	45.05	71.30	---	---	36.00	---
4950	5012L	45.05	71.30	---	---	---	40.00

DRAWING REVISION D	REVISION BY ZR	DATE 10-09-2018
ECO ECO-0154266	APPROVED BY TRK	DATE 10-09-2018
ECO DESCRIPTION UPDATED TO CURRENT STANDARDS COPYRIGHT REGAL BELOIT AMERICA, INC. ALL RIGHTS RESERVED. PROPRIETARY AND CONFIDENTIAL INFORMATION - THIS DOCUMENT IS THE PROPERTY OF REGAL BELOIT AMERICA, INC. ("OWNER") AND CONTAINS OWNER'S PROPRIETARY INFORMATION. ANY PERSON, CORPORATION OR OTHER FIRM RECEIVING IT IS DEEMED, BY RECEIVING IT, TO AGREE THAT IT, AND/OR ANY PART OF IT, SHALL NOT BE DISCLOSED TO ANY PERSON, CORPORATION OR OTHER ENTITY, DUPLICATED, AND/OR USED, EXCEPT AS EXPRESSLY APPROVED IN WRITING IN ADVANCE BY OWNER. THIS DOCUMENT SHALL BE RETURNED TO OWNER UPON REQUEST. IT MAY BE SUBJECT TO CERTAIN RESTRICTIONS UNDER APPLICABLE EXPORT CONTROL LAWS AND REGULATIONS.		

TOLERANCES UNLESS OTHERWISE SPECIFIED:  
 DEC. INCH mm ANGLE  
 .X ±0.1 [±2.5] ±7° 30"  
 .XX ±0.03 [±0.76]  
 .XXX ±0.005 [±0.127]  
 .XXXX ±0.0005 [±0.0127]  
 REMOVE BURRS & BREAK SHARP  
 EDGES: .003/.015 [.076/.381] X 45°  
 CORNER FILLETS: R.02 [.51]  
 MACHINED SURFACES: 200 INCH/mm 5.1  
 mm SHOWN IN [BRACKETS]

DRAWN BY DRS
DATE 06-11-2001
APPROVED BY DMT
DATE 06-11-2001
REFERENCE
THIRD ANGLE PROJECTION

**REGAL**™ Regal Beloit America, Inc.

DESCRIPTION  
**OUTLINE**  
5009-12L FR. - CAST CONDUIT BOX

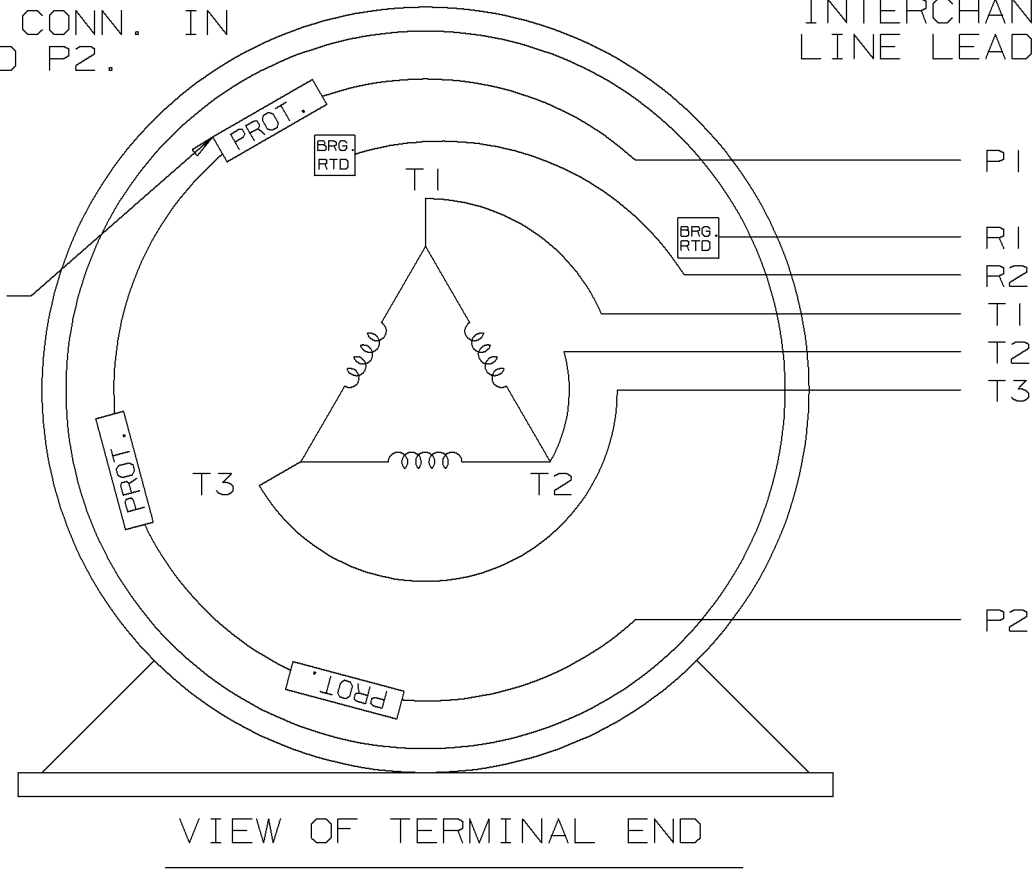
MATERIAL PROCESS/FINISH

SIZE B DRAWING NUMBER **SS518525** SHEET 1 OF 1

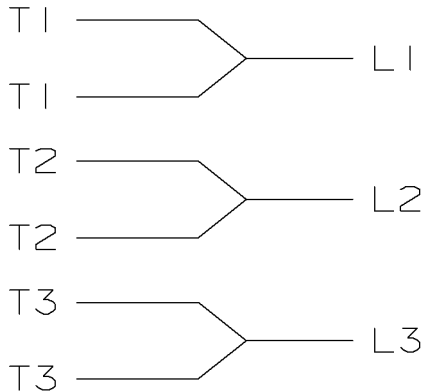
THREE PHASE - SINGLE VOLTAGE MOTOR OR INDUCTION GENERATOR WITH 2 BRG. RTD'S, MARKED R1 AND R2, AND 3 PROTECTORS CONN. IN SERIES, MARKED P1 AND P2.

TO REVERSE ROTATION: INTERCHANGE ANY TWO LINE LEAD CONNECTIONS.

THERMO-PROTECTORS CONNECTED IN SERIES.



IF MOTOR OR GEN. HAS 6 LEADS



A-9806 DECAL

				125 $\sqrt{\quad}$ SURFACE ROUGHNESS UNLESS NOTED OTHERWISE	UNLESS OTHERWISE SPECIFIED DIMENSIONS ARE IN INCHES TOL ON XX±.02 XXX±.005 XXXX±.0005 ANGLES± 7°30"	
				MATL SPEC	DRAWN BY KL 08/31/93	
				FINISH	CHKD BY ML 09/01/93	
I		NEW DRAWING	4005110	KL	APPD BY	
REV	DATE	CHANGE	NAME	PART NAME CONNECTION DIAGRAM SINGLE VOLT - 3Ø MOTOR		DRWG NO A-EE7300DN
					CADD FILE NO.	EE7300DN