

PRODUCT INFORMATION PACKET

marathon®
Motors

Model No: 5011LTFCD6036

Catalog No: Y9211

General Purpose Motor, 500 & 450 HP, 3 Ph, 60 & 50 Hz, 460 & 380 V, 1800 & 1500 RPM, 5011L Frame,
TEFC



Regal and Marathon are trademarks of Regal Rexnord Corporation or one of its affiliated companies.

©2023 Regal Rexnord Corporation, All Rights Reserved. MC017097E

RegalRexnord

Nameplate Specifications

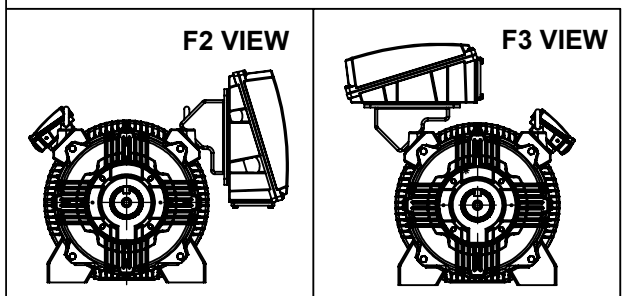
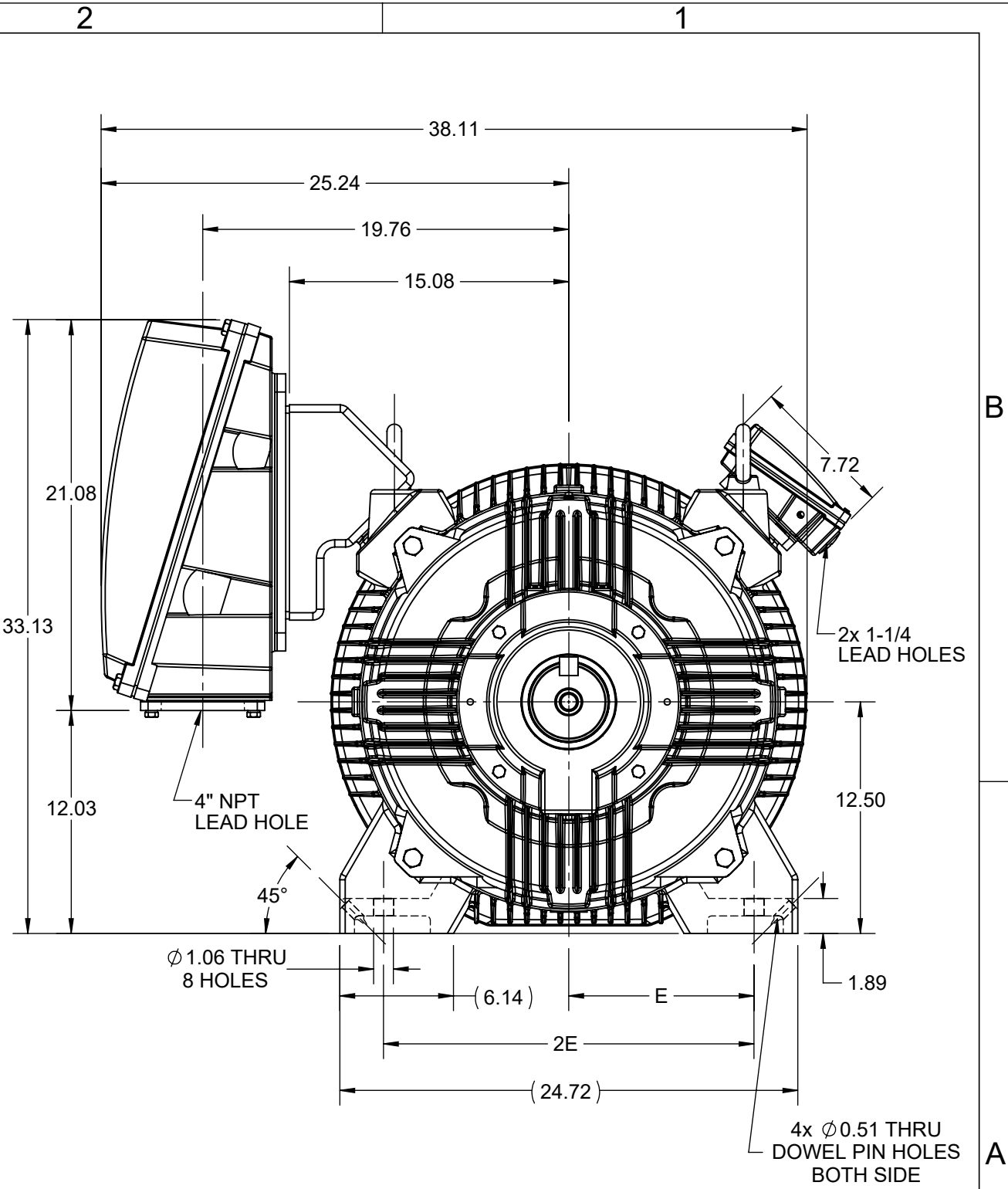
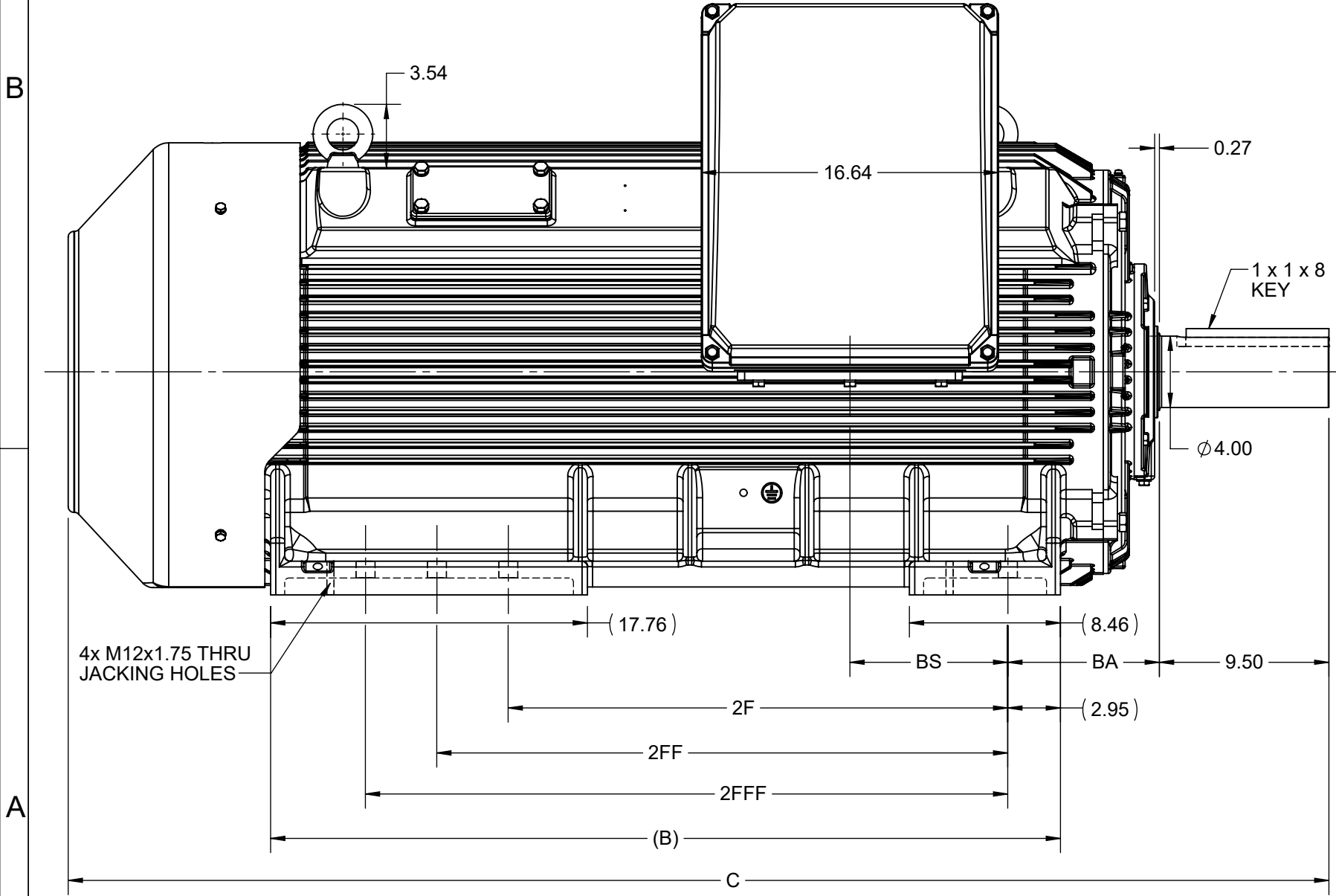
| | | | |
|------------------------|------------------|----------------------------|-----------------------------|
| Phase | 3 | Output HP | 500 & 450 Hp |
| Output KW | 370.0 & 340.0 kW | Voltage | 460 & 380 V |
| Speed | 1787 & 1485 rpm | Service Factor | 1.15 & 1.15 |
| Frame | 5011L | Enclosure | Totally Enclosed Fan Cooled |
| Thermal Protection | No Protection | Efficiency | 96.2 & 95.8 % |
| Ambient Temperature | 40 °C | Frequency | 60 & 50 Hz |
| Current | 540 & 585 A | Power Factor | 90.2 |
| Duty | Continuous | Insulation Class | F |
| Design Code | B | KVA Code | G |
| Drive End Bearing Size | 6322 | Opp Drive End Bearing Size | 6319 |
| UL | Recognized | CSA | Y |
| CE | Y | IP Code | 55 |
| Number of Speeds | 1 | | |

Technical Specifications


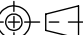
| | | | |
|-----------------------|------------------------------|-----------------------|------------------|
| Electrical Type | Squirrel Cage Inverter Rated | Starting Method | Line Or Inverter |
| Poles | 4 | Rotation | Reversible |
| Resistance Main | .0056 Ohms | Mounting | Rigid Base |
| Motor Orientation | Horizontal | Drive End Bearing | Ball |
| Opp Drive End Bearing | Ball | Frame Material | Cast Iron |
| Shaft Type | L | Assembly/Box Mounting | F1/F2 CAPABLE |
| Inverter Load | CONSTANT 2:1/VARIABLE 10:1 | | |
| Connection Drawing | EE7300CD | Outline Drawing | SS621030 |

This is an uncontrolled document once printed or downloaded and is subject to change without notice. Date Created:06/23/2023

| 4 | | | | 3 | | | | | |
|-------|-------|-------|-------|-------|-------|-------|------|------|----------|
| B | C | E | 2E | 2F | 2FF | 2FFF | BA | BS | MOUNTING |
| 44.27 | 70.66 | 10.00 | 20.00 | 28.00 | 32.00 | 36.00 | 8.50 | 8.85 | F1/F2/F3 |

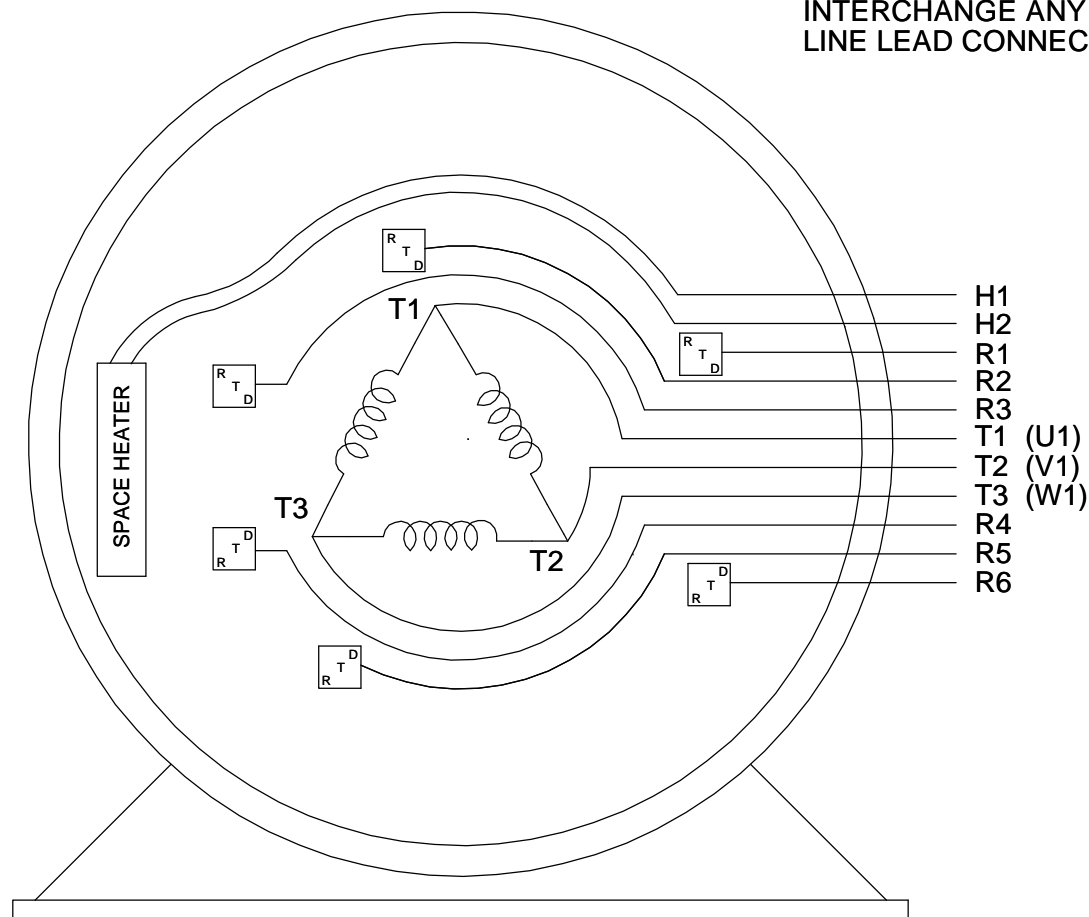


| | | |
|--|----------------------|-------------------------------|
| DRAWING REVISION C | REVISION BY BISWA | REV DATE/© DATE 11/01/2021 |
| ECO CR-0000524 | APPROVED BY RMS | DATE 11/01/2021 |
| ECO DESCRIPTION UPDATED DRAWING COPYRIGHT (PER REVISION DATE) REGAL BELOIT AMERICA, INC. ALL RIGHTS RESERVED. PROPRIETARY AND CONFIDENTIAL INFORMATION - THIS DOCUMENT IS THE PROPERTY OF REGAL BELOIT AMERICA, INC. ("OWNER") AND CONTAINS OWNER'S PROPRIETARY INFORMATION. ANY PERSON, CORPORATION OR OTHER FIRM RECEIVING IT IS DEEMED, BY RECEIVING IT, TO AGREE THAT IT, AND/OR ANY PART OF IT, SHALL NOT BE DISCLOSED TO ANY PERSON, CORPORATION OR OTHER ENTITY, DUPLICATED, AND/OR USED, EXCEPT AS EXPRESSLY APPROVED IN WRITING IN ADVANCE BY OWNER. THIS DOCUMENT SHALL BE RETURNED TO OWNER UPON REQUEST. IT MAY BE SUBJECT TO CERTAIN RESTRICTIONS UNDER APPLICABLE EXPORT CONTROL LAWS AND REGULATIONS. | | |

| | | | | | | |
|--|--|--|--|----------------------------|----------------|-----------------|
| PRIMARY DIMENSIONS ARE INCH mm DIMENSIONS IN [BRACKETS] ARE FOR REFERENCE ONLY | DRAWN BY BISWA | |  Regal Beloit America, Inc. | | | |
| | DATE 12/05/2020 | | | | | |
| | APPROVED BY SBD | | DESCRIPTION OUTLINE 5009-5011L-B3 MTG. | | | |
| | DATE 12/05/2020 | | | | | |
| | REFERENCE | | MATERIAL | | PROCESS/FINISH | |
| | THIRD ANGLE PROJECTION  | | SIZE B | DRAWING NUMBER SS621030 | | SHEET 1 OF 1 |

THREE PHASE - SINGLE VOLTAGE
MOTOR OR INDUCTION GENERATOR
WITH 6 RTD'S 2 PER PHASE
MARKED R1 THRU R6, AND ONE
SPACE HEATER MARKED H1 & H2.

TO REVERSE ROTATION
INTERCHANGE ANY TWO
LINE LEAD CONNECTIONS.


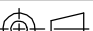


IF MOTOR HAS MULTIPLE
T'S PER LEAD CONNECT
TOGETHRE LIKE T'S

T1 (U1) ———— L1
T1 (U1) ————
T2 (V1) ———— L2
T2 (V1) ————
T3 (W1) ———— L3
T3 (W1) ————

A-9806 DECAL

VIEW OF TERMINAL END

| | | | | | | | | | | | |
|---|-------------------|-------------------------------|--|---------|----------|---------|------------------------|---|----------------|----------------------------|-----------------|
| DRAWING REVISION C | REVISION BY SD | REV DATE/© DATE 12/13/2019 | TOLERANCES (EXCEPT AS NOTED): | | | | DRAWN BY RM | <div> Regal Beloit America, Inc.</div> | | | |
| ECO ECO-0178718 | APPROVED BY GM | DATE 12/13/2019 | DEC. | INCH | mm | ANGLE | DATE 03-27-1991 | | | | |
| ECO DESCRIPTION | | | .X | ±0.1 | [±3] | ±7' 30" | APPROVED BY ML | DESCRIPTION <div>CONNECTION DIAGRAM</div> <div>SINGLE VOLT - 3<MOD-DIAM> MOTOR</div> | | | |
| LOGO UPDATED | | | .XX | ±0.02 | [±0.5] | | DATE 03-27-1991 | | | | |
| <div>COPYRIGHT (PER REVISION DATE) REGAL BELOIT AMERICA, INC. ALL RIGHTS RESERVED. PROPRIETARY AND CONFIDENTIAL INFORMATION - THIS DOCUMENT IS THE PROPERTY OF REGAL BELOIT AMERICA, INC. ("OWNER") AND CONTAINS OWNER'S PROPRIETARY INFORMATION. ANY PERSON, CORPORATION OR OTHER FIRM RECEIVING IT IS DEEMED, BY RECEIVING IT, TO AGREE THAT IT, AND/OR ANY PART OF IT, SHALL NOT BE DISCLOSED TO ANY PERSON, CORPORATION OR OTHER ENTITY, DUPLICATED, AND/OR USED, EXCEPT AS EXPRESSLY APPROVED IN WRITING IN ADVANCE BY OWNER. THIS DOCUMENT SHALL BE RETURNED TO OWNER UPON REQUEST. IT MAY BE SUBJECT TO CERTAIN RESTRICTIONS UNDER APPLICABLE EXPORT CONTROL LAWS AND REGULATIONS.</div> | | | .XXX | ±0.005 | [±0.13] | | REFERENCE | MATERIAL | PROCESS/FINISH | | |
| | | | .XXXX | ±0.0005 | [±0.013] | | | | | | |
| | | | REMOVE BURRS & BREAK SHARP EDGES: .003/.015 [.08/.38] X 45 ° | | | | | | | | |
| | | | CORNER FILLETS: R.02 [.5] | | | | | | | | |
| | | | MACHINED SURFACES: 200/5.1 INCH/mm | | | | THIRD ANGLE PROJECTION |  | SIZE A | DRAWING NUMBER EE7300CD | SHEET 1 OF 1 |
| | | | mm DIMENSIONS IN [BRACKETS] ARE FOR REFERENCE ONLY | | | | | | | | |



P.O. BOX 8003
WAUSAU, WI 54401-8003
PH. 715-675-3311

DATA VOLTS: 460

CERTIFICATION DATA SHEET

CUSTOMER: _____
ORDER #: _____
CONN. DIAGRAM: EE7300CD
OUTLINE: SS621030
WINDING: HA33154023 NONE 1
SPEED: _____

CUSTOMER P.O. #: _____
REFERENCE MODEL #: 5011LTFCD6036
CAT #: GT1095
CUSTOMER PART #: _____
MOUNTING: F1/F2 CAPABLE

TYPICAL MOTOR PERFORMANCE DATA

| HP | KW | SYNC RPM | FL RPM | FRAME | ENCLOSURE | TYPE | KVA CODE | DESIGN |
|-----|-----|----------|--------|-------|-----------|------|----------|--------|
| 500 | 373 | 1800 | 1787 | 5011L | TEFC | TFC | G | B |

| PH | HZ | VOLTS | AMPS | START TYPE | DUTY | INSL | S.F. | AMB(* C) | ELEV.(Ft.) |
|----|-------|---------|---------|------------------|------|------|------|----------|------------|
| 3 | 60/50 | 460#380 | 540&585 | LINE OR INVERTER | CONT | F | 1.15 | 40 | 3300 |

| | | | | | | | |
|----------|------|------------|------|------------|------|---------|-------------------|
| F.L. EFF | 96.2 | 3/4 LD EFF | 96.4 | 1/2 LD EFF | 96.0 | GTD EFF | ELECT. TYPE |
| F.L. PF | 90.2 | 3/4 LD PF | 88.9 | 1/2 LD PF | 84.3 | 95.8 | SQ CAGE INV RATED |

| | | | | |
|-------------|-----------------|-------------|-------------|-----------------|
| F.L. TORQUE | LR AMPS @ 460 V | L.R. TORQUE | B.D. TORQUE | F.L. RISE (* C) |
| 1,469 LB-FT | 3,775 | 2,975 LB-FT | 3,575 LB-FT | 75 |

| | | | | | | | | |
|------------------------|--------|-------|------------------------|---------------------------|-----------------|-------------|---------|-----------|
| SOUND PRESSURE @ 3 FT. | SOUND | POWER | ROTOR WK ² | MAX. LOAD WK ² | SAFE STALL TIME | STARTS/HOUR | APPROX. | MOTOR WGT |
| 85 dBA | 94 dBA | | 217 LB-FT ² | - LB-FT ² | 50 SEC. | 2 | 5014 | LB. |

*** SUPPLEMENTAL INFORMATION ***

| | | | | | | | | |
|-----------------|------------------|------------|-------------------|-------------|--------------------|------------|---------|---------------|
| DE BRACKET TYPE | ODE BRACKET TYPE | MOUNT TYPE | MOTOR ORIENTATION | SEVERE DUTY | HAZARDOUS LOCATION | DRIP COVER | SCREENS | PAINT |
| STANDARD | STANDARD | RIGID | HORIZONTAL | NO | NONE | NO | NONE | BLUE (ENAMEL) |

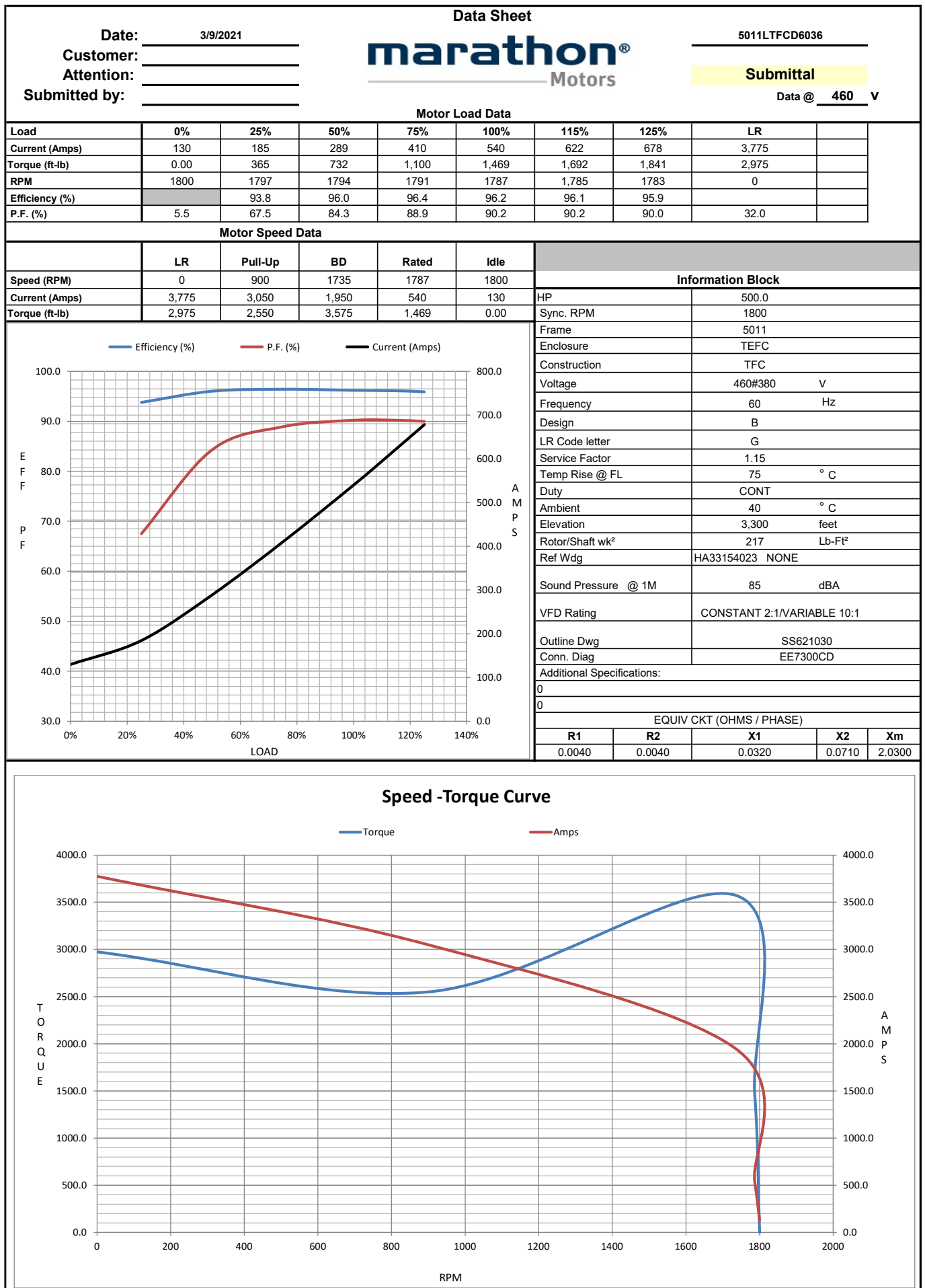
| | | | | | | |
|-----------|------------|------------|------------|-------------|-------------------------|----------------|
| BEARINGS | GREASE | SHAFT TYPE | SPECIAL DE | SPECIAL ODE | SHAFT MATERIAL | FRAME MATERIAL |
| DE ODE | | | | | | |
| BALL BALL | POLYREX EM | L | NONE | NONE | 1045 HOT ROLLED (C-204) | CAST IRON |
| 6322 6319 | | | | | | |

| | | | | | | |
|-------------|------------|----------------------|---------------------|-------------|---------|---------------|
| THERMOSTATS | PROTECTORS | WDG RTD's | BRG RTD's | THERMISTORS | CONTROL | SPACE HEATERS |
| NONE | NOT | ATINUM TWO PER PHASE | PLATINUM DE AND ODE | NONE | FALSE | 120V |

| | | | | | | |
|--------------|--------------|--------------|--------------|--------------|--------------------|-------|
| R1 (ohms/ph) | R2 (ohms/ph) | X1 (ohms/ph) | X2 (ohms/ph) | Xm (ohms/ph) | VIBRATION (in/sec) | FLOAT |
| 0.004 | 0.004 | 0.032 | 0.071 | 2.03 | 0.150 | ODE |

| | | |
|---------------------------------|--------------------------------------|--|
| * N O T E S * | | INVERTER TORQUE: CONSTANT 2:1/VARIABLE 10:1 INV. HP SPEED RANGE: NONE |
| | | ENCODER: NONE NONE NONE PPR |
| | | BRAKE: NONE NONE FT-LB: NA VOLTAGE: NONE UL: V - L,ME-INS,CONST UL REC |
| | PREPARED BY: _____ DATE: 3/9/2021 | 0 |

FORM: 3531 REV_4 2/27/06



EC Declaration of Conformity

The undersigned representing
the manufacturer:

Regal Beloit America
100 East Randolph St.
Wausau, WI 54401

and the authorized representative
established within the Community:

Marathon Electric UK
6F Thistleton Road Ind. Estate
Market Overton
Oakham, Rutland LE15 7PP UK

are committed to providing customers with products that comply with applicable regulations and international protocols to which they are subject, including the requirements of the European Parliament Directive on the Harmonization of the laws relating to electrical equipment designed for use within certain voltage limits (2014/35/EU).

Regal Beloit America declares that the following product(s), to which this declaration relates, are in conformity with the relevant sections of the EC standards listed below.

This statement supersedes any statements previously issued pertaining to the product(s) listed below and is subject to change without notice.

Model No : 5011LTFCD6036

(Model No. may contain prefix and/or suffix characters)

Catalog No : Y9211

Rework No : N/A

Directives :

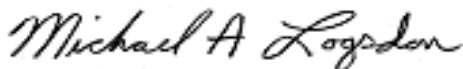
Low Voltage Directive 2014/35/EU

Harmonized Standards Used :

EN 60034-1: 2010 (IEC 60034-1: 2010)

EN 60034-5: 2001/A1:2007 (IEC 60034-5: 2000/A1:2006)

Authorized Representative:



Michael A. Logsdon
Vice President, Technology

Authorized Representative in the Community:



Julian Clark
Marketing Engineer

Created on 09/01/2022

CE 22