

PRODUCT INFORMATION PACKET

marathon®
Motors

Model No: 5011LTFCD6026

Catalog No: Y9208

General Purpose Motor, 450 & 400 HP, 3 Ph, 60 & 50 Hz, 460 & 380 V, 1800 & 1500 RPM, 5011L Frame,
TEFC



Regal and Marathon are trademarks of Regal Rexnord Corporation or one of its affiliated companies.

©2023 Regal Rexnord Corporation, All Rights Reserved. MC017097E

RegalRexnord

Nameplate Specifications

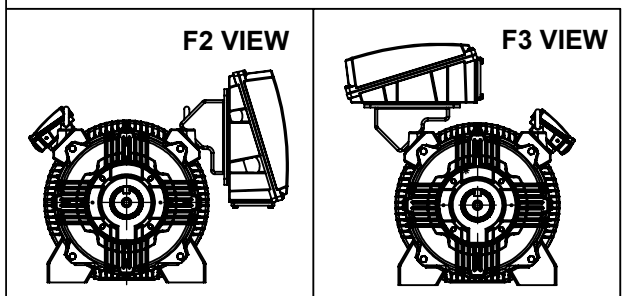
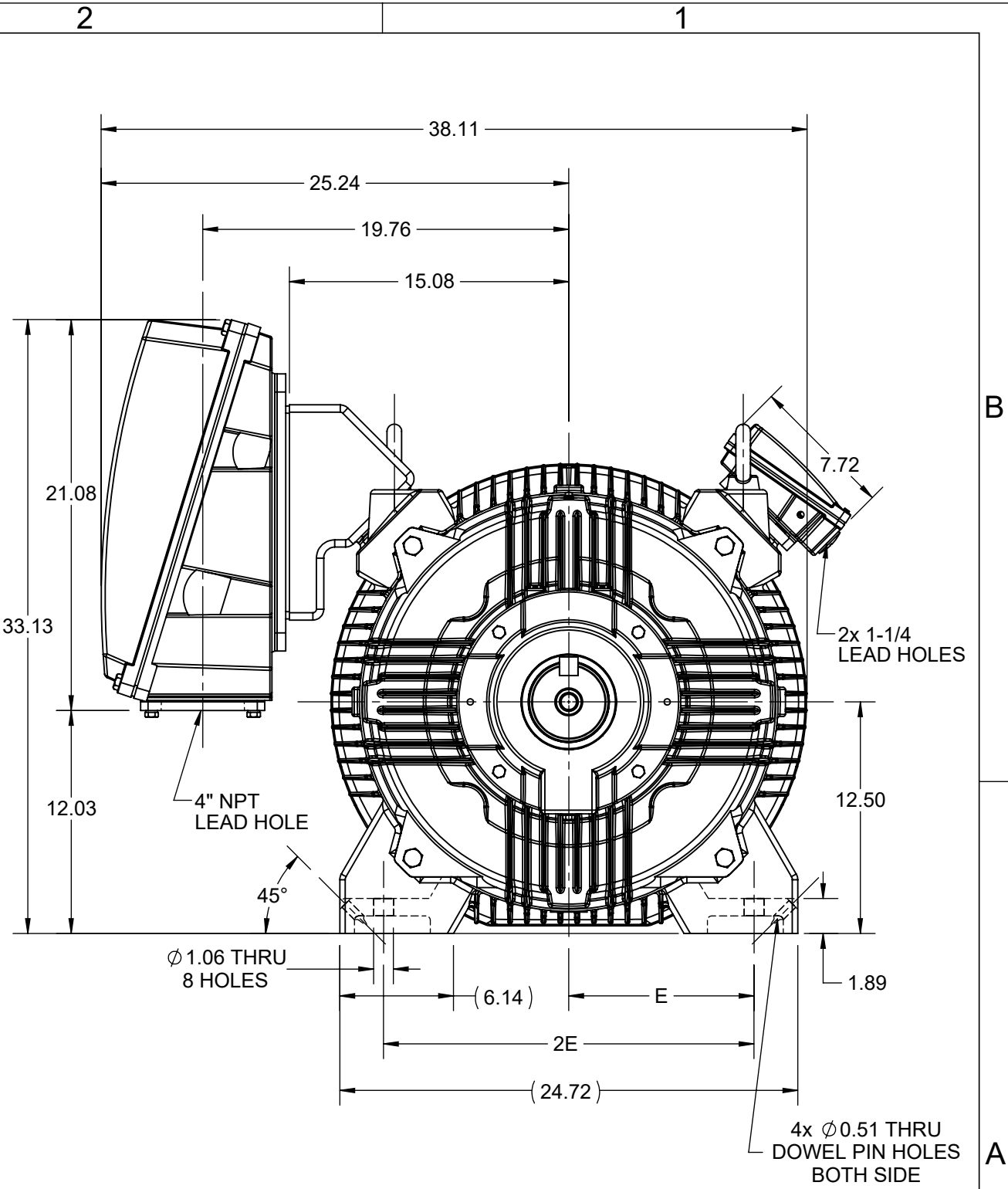
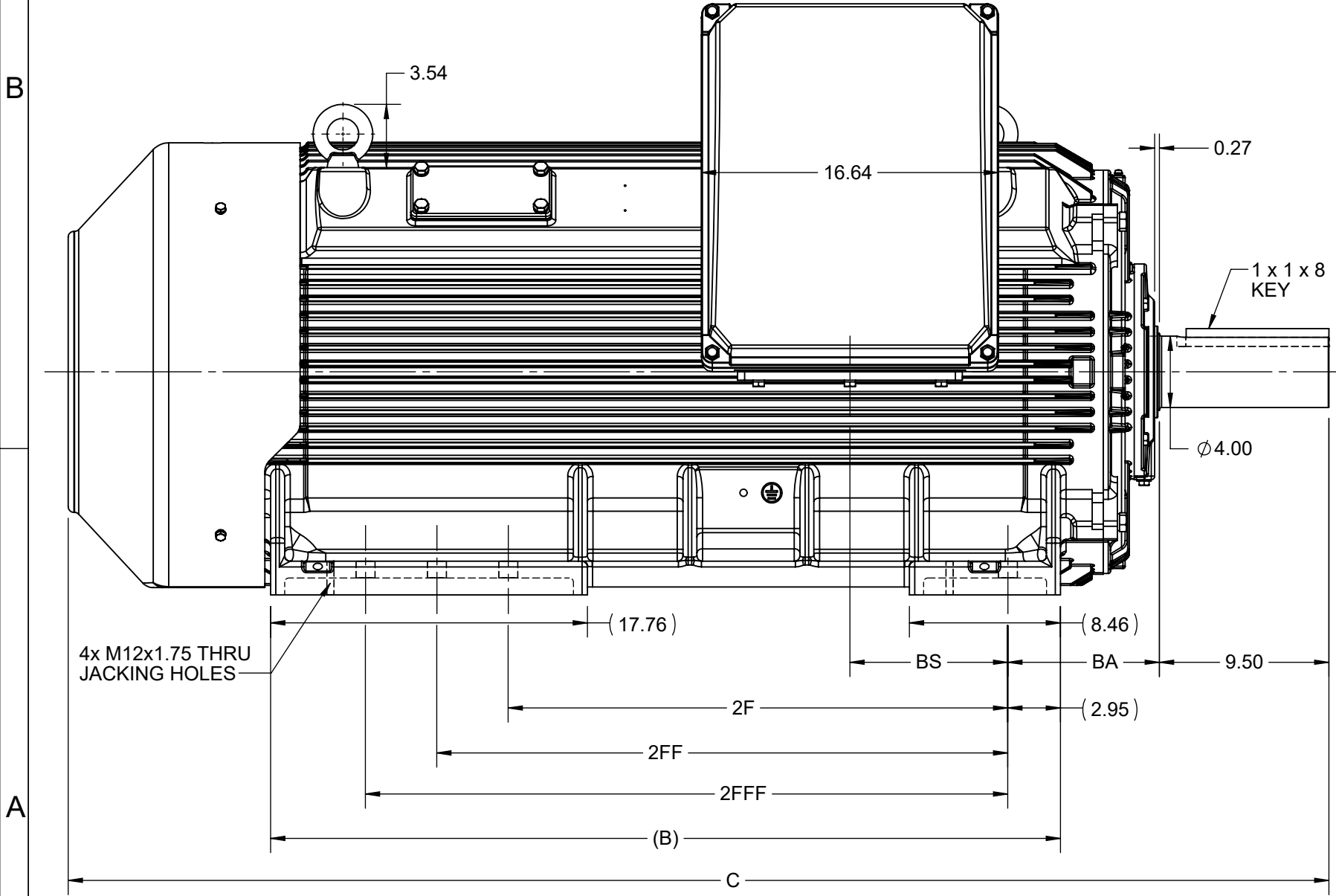
Phase	3	Output HP	450 & 400 Hp
Output KW	340.0 & 300.0 kW	Voltage	460 & 380 V
Speed	1787 & 1485 rpm	Service Factor	1.15 & 1.15
Frame	5011L	Enclosure	Totally Enclosed Fan Cooled
Thermal Protection	No Protection	Efficiency	96.2 & 95.8 %
Ambient Temperature	40 °C	Frequency	60 & 50 Hz
Current	486 & 525 A	Power Factor	90.2
Duty	Continuous	Insulation Class	F
Design Code	B	KVA Code	G
Drive End Bearing Size	6322	Opp Drive End Bearing Size	6319
UL	Recognized	CSA	Y
CE	Y	IP Code	55
Number of Speeds	1		

Technical Specifications

Electrical Type	Squirrel Cage Inverter Rated	Starting Method	Line Or Inverter
Poles	4	Rotation	Reversible
Resistance Main	.0067 Ohms	Mounting	Rigid Base
Motor Orientation	Horizontal	Drive End Bearing	Ball
Opp Drive End Bearing	Ball	Frame Material	Cast Iron
Shaft Type	L	Assembly/Box Mounting	F1/F2 CAPABLE
Inverter Load	CONSTANT 2:1/VARIABLE 10:1		
Connection Drawing	EE7300CD	Outline Drawing	SS621030


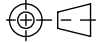
This is an uncontrolled document once printed or downloaded and is subject to change without notice. Date Created:06/23/2023

4				3					
B	C	E	2E	2F	2FF	2FFF	BA	BS	MOUNTING
44.27	70.66	10.00	20.00	28.00	32.00	36.00	8.50	8.85	F1/F2/F3



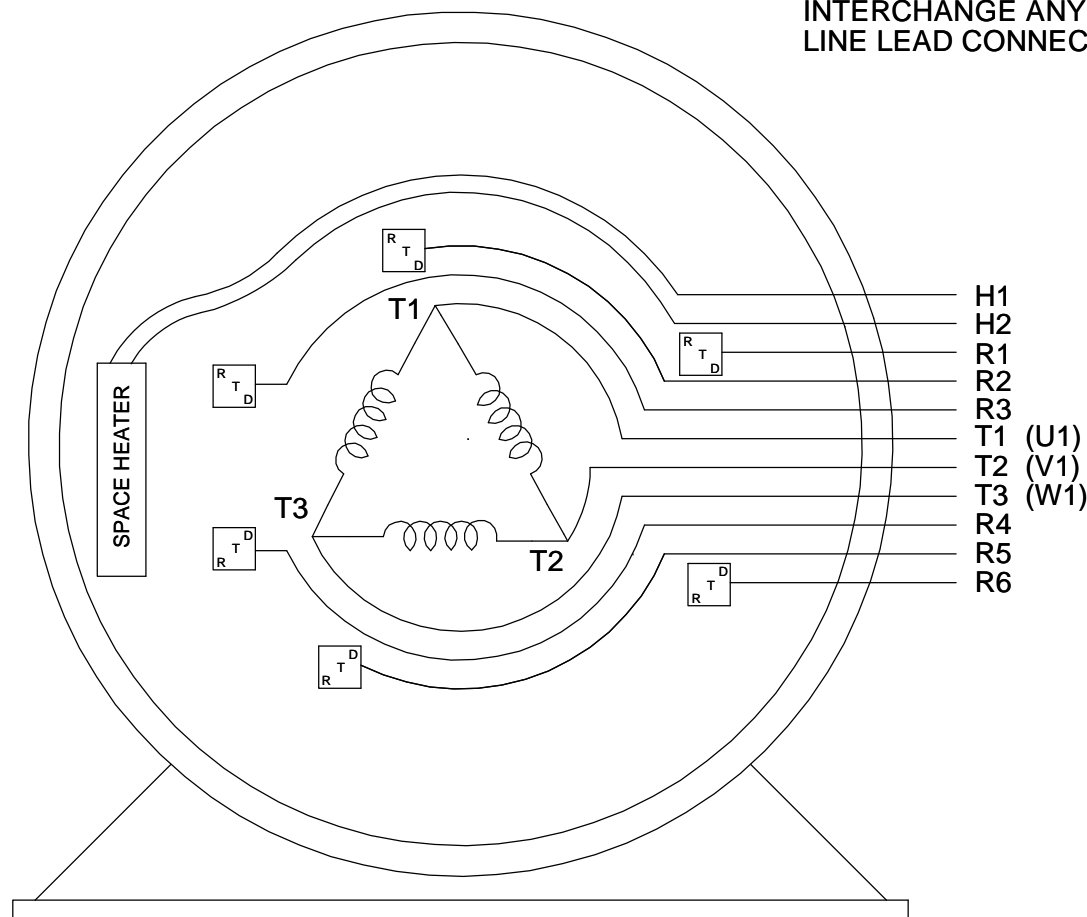
DRAWING REVISION C	REVISION BY BISWA	REV DATE/© DATE 11/01/2021
ECO CR-0000524	APPROVED BY RMS	DATE 11/01/2021
ECO DESCRIPTION UPDATED DRAWING COPYRIGHT (PER REVISION DATE) REGAL BELOIT AMERICA, INC. ALL RIGHTS RESERVED. PROPRIETARY AND CONFIDENTIAL INFORMATION - THIS DOCUMENT IS THE PROPERTY OF REGAL BELOIT AMERICA, INC. ("OWNER") AND CONTAINS OWNER'S PROPRIETARY INFORMATION. ANY PERSON, CORPORATION OR OTHER FIRM RECEIVING IT IS DEEMED, BY RECEIVING IT, TO AGREE THAT IT, AND/OR ANY PART OF IT, SHALL NOT BE DISCLOSED TO ANY PERSON, CORPORATION OR OTHER ENTITY, DUPLICATED, AND/OR USED, EXCEPT AS EXPRESSLY APPROVED IN WRITING IN ADVANCE BY OWNER. THIS DOCUMENT SHALL BE RETURNED TO OWNER UPON REQUEST. IT MAY BE SUBJECT TO CERTAIN RESTRICTIONS UNDER APPLICABLE EXPORT CONTROL LAWS AND REGULATIONS.		

PRIMARY DIMENSIONS ARE INCH
mm DIMENSIONS IN [BRACKETS]
ARE FOR REFERENCE ONLY

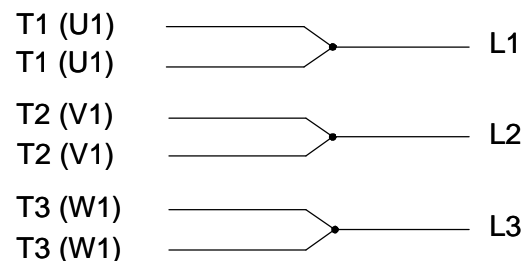
DRAWN BY BISWA	 Regal Beloit America, Inc.		
DATE 12/05/2020			
APPROVED BY SBD	DESCRIPTION OUTLINE 5009-5011L-B3 MTG.		
DATE 12/05/2020			
REFERENCE	MATERIAL	PROCESS/FINISH	
THIRD ANGLE PROJECTION 	SIZE B	DRAWING NUMBER SS621030	SHEET 1 OF 1

THREE PHASE - SINGLE VOLTAGE
MOTOR OR INDUCTION GENERATOR
WITH 6 RTD'S 2 PER PHASE
MARKED R1 THRU R6, AND ONE
SPACE HEATER MARKED H1 & H2.

TO REVERSE ROTATION
INTERCHANGE ANY TWO
LINE LEAD CONNECTIONS.


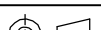


IF MOTOR HAS MULTIPLE
T'S PER LEAD CONNECT
TOGETHRE LIKE T'S



A-9806 DECAL

VIEW OF TERMINAL END

DRAWING REVISION C	REVISION BY SD	REV DATE/© DATE 12/13/2019	TOLERANCES (EXCEPT AS NOTED):				DRAWN BY RM		<div> Regal Beloit America, Inc.</div>		
ECO ECO-0178718	APPROVED BY GM	DATE 12/13/2019	DEC.	INCH	mm	ANGLE	DATE 03-27-1991				
ECO DESCRIPTION			.X	±0.1	[±3]	±7° 30"	APPROVED BY ML	DESCRIPTION CONNECTION DIAGRAM SINGLE VOLT - 3<MOD-DIAM> MOTOR			
LOGO UPDATED			.XX	±0.02	[±0.5]		DATE 03-27-1991				
COPYRIGHT (PER REVISION DATE) REGAL BELOIT AMERICA, INC. ALL RIGHTS RESERVED. PROPRIETARY AND CONFIDENTIAL INFORMATION - THIS DOCUMENT IS THE PROPERTY OF REGAL BELOIT AMERICA, INC. ("OWNER") AND CONTAINS OWNER'S PROPRIETARY INFORMATION. ANY PERSON, CORPORATION OR OTHER FIRM RECEIVING IT IS DEEMED, BY RECEIVING IT, TO AGREE THAT IT, AND/OR ANY PART OF IT, SHALL NOT BE DISCLOSED TO ANY PERSON, CORPORATION OR OTHER ENTITY, DUPLICATED, AND/OR USED, EXCEPT AS EXPRESSLY APPROVED IN WRITING IN ADVANCE BY OWNER. THIS DOCUMENT SHALL BE RETURNED TO OWNER UPON REQUEST. IT MAY BE SUBJECT TO CERTAIN RESTRICTIONS UNDER APPLICABLE EXPORT CONTROL LAWS AND REGULATIONS.			.XXX	±0.005	[±0.13]		REFERENCE	MATERIAL	PROCESS/FINISH		
			.XXXX	±0.0005	[±0.013]						
			REMOVE BURRS & BREAK SHARP EDGES: .003/.015 [.08/.38] X 45 °								
			CORNER FILLETS: R.02 [.5]								
			MACHINED SURFACES: 200/5.1 INCH/mm				THIRD ANGLE PROJECTION		SIZE A	DRAWING NUMBER EE7300CD	SHEET 1 OF 1
			mm DIMENSIONS IN [BRACKETS] ARE FOR REFERENCE ONLY								



P.O. BOX 8003
WAUSAU, WI 54401-8003
PH. 715-675-3311

DATA VOLTS: 460

CERTIFICATION DATA SHEET

CUSTOMER: _____
ORDER #: _____
CONN. DIAGRAM: EE7300CD
OUTLINE: SS621030
WINDING: HA33154022 NONE 1
SPEED: _____

CUSTOMER P.O. #: _____
REFERENCE MODEL #: 5011LTFCD6026
CAT #: GT1090
CUSTOMER PART #: _____
MOUNTING: F1/F2 CAPABLE

TYPICAL MOTOR PERFORMANCE DATA

HP	KW	SYNC RPM	FL RPM	FRAME	ENCLOSURE	TYPE	KVA CODE	DESIGN
450	336	1800	1787	5011L	TEFC	TFC	G	B

PH	HZ	VOLTS	AMPS	START TYPE	DUTY	INSL	S.F.	AMB(* C)	ELEV.(Ft.)
3	60/50	460#380	486&525	LINE OR INVERTER	CONT	F	1.15	40	3300

F.L. EFF	96.2	3/4 LD EFF	96.3	1/2 LD EFF	95.9	GTD EFF	ELECT. TYPE
F.L. PF	90.2	3/4 LD PF	89.2	1/2 LD PF	84.9	95.8	SQ CAGE INV RATED

F.L. TORQUE	LR AMPS @ 460 V	L.R. TORQUE	B.D. TORQUE	F.L. RISE (* C)
1,323 LB-FT	3,450	2,510 LB-FT 190%	3,085 LB-FT 233%	75

SOUND PRESSURE @ 3 FT.	SOUND	POWER	ROTOR WK ²	MAX. LOAD WK ²	SAFE STALL TIME	STARTS/HOUR	APPROX.	MOTOR WGT
85 dBA	94 dBA		205 LB-FT ²	- LB-FT ²	46 SEC.	2	5201	LB.

*** SUPPLEMENTAL INFORMATION ***

DE BRACKET TYPE	ODE BRACKET TYPE	MOUNT TYPE	MOTOR ORIENTATION	SEVERE DUTY	HAZARDOUS LOCATION	DRIP COVER	SCREENS	PAINT
STANDARD	STANDARD	RIGID	HORIZONTAL	NO	NONE	NO	NONE	BLUE (ENAMEL)

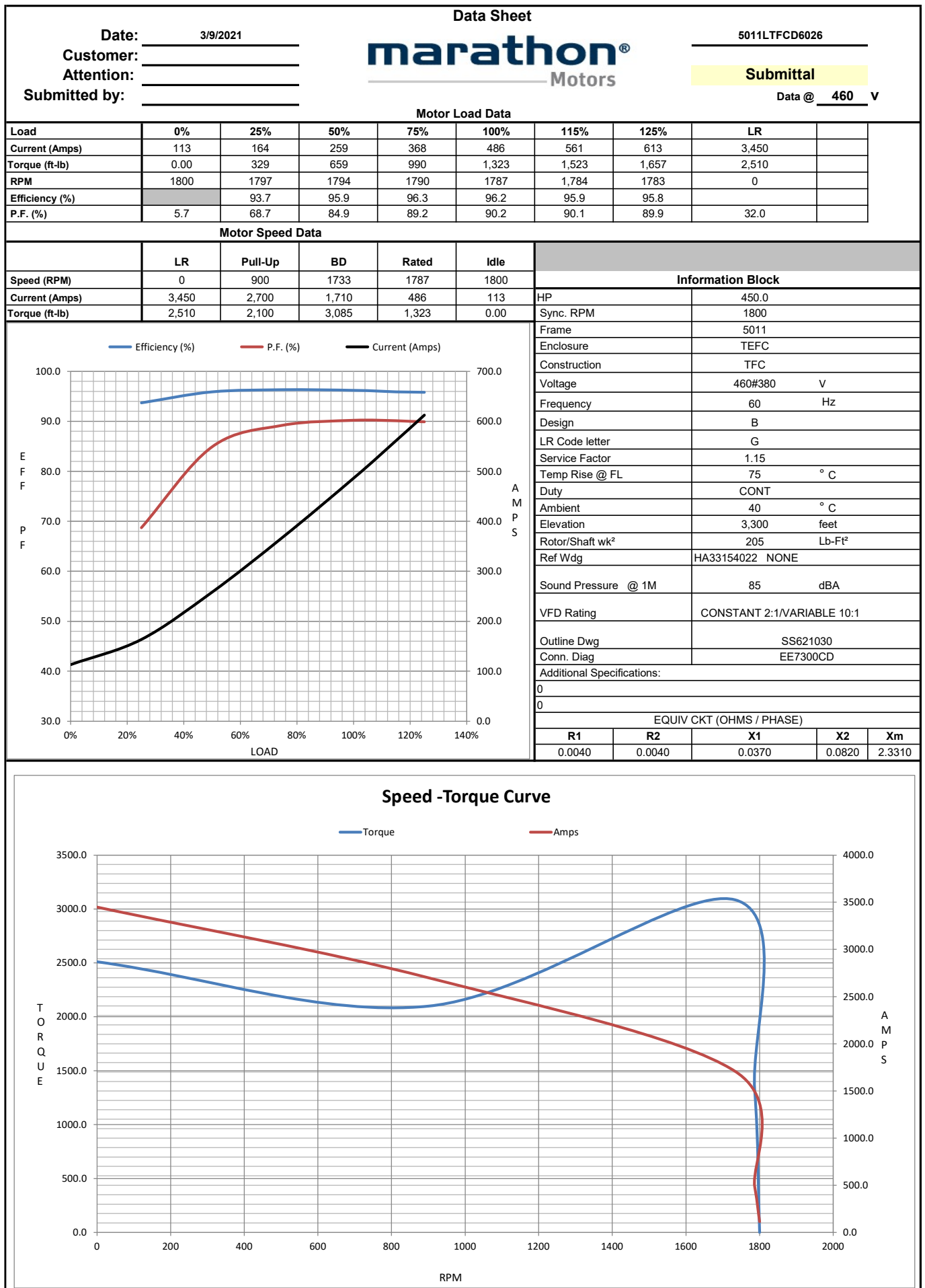
BEARINGS	GREASE	SHAFT TYPE	SPECIAL DE	SPECIAL ODE	SHAFT MATERIAL	FRAME MATERIAL
DE ODE						
BALL BALL	POLYREX EM	L	NONE	NONE	1045 HOT ROLLED (C-204)	CAST IRON
6322 6319						

THERMOSTATS	PROTECTORS	WDG RTD's	BRG RTD's	THERMISTORS	CONTROL	SPACE HEATERS
NONE	NOT	ATINUM TWO PER PHASE	PLATINUM DE AND ODE	NONE	FALSE	120V

R1 (ohms/ph)	R2 (ohms/ph)	X1 (ohms/ph)	X2 (ohms/ph)	Xm (ohms/ph)	VIBRATION (in/sec)	FLOAT
0.004	0.004	0.037	0.082	2.331	0.150	ODE

* N O T E S *					INVERTER TORQUE: CONSTANT 2:1/VARIABLE 10:1 INV. HP SPEED RANGE: NONE			
					ENCODER: NONE			
					NONE			
					NONE PPR			
PREPARED BY: _____ 0					BRAKE: NONE			
DATE: 3/9/2021					NONE NONE			
					FT-LB: NA			
					VOLTAGE: NONE HZ:			
					UL: V - LI,ME-INS,CONST UL REC			
FORM: 3531 REV 4 2/27/06								

FORM: 3531 REV_4 2/27/06



EC Declaration of Conformity

The undersigned representing
the manufacturer:

Regal Beloit America
100 East Randolph St.
Wausau, WI 54401

and the authorized representative
established within the Community:

Marathon Electric UK
6F Thistleton Road Ind. Estate
Market Overton
Oakham, Rutland LE15 7PP UK

are committed to providing customers with products that comply with applicable regulations and international protocols to which they are subject, including the requirements of the European Parliament Directive on the Harmonization of the laws relating to electrical equipment designed for use within certain voltage limits (2014/35/EU).

Regal Beloit America declares that the following product(s), to which this declaration relates, are in conformity with the relevant sections of the EC standards listed below.

This statement supersedes any statements previously issued pertaining to the product(s) listed below and is subject to change without notice.

Model No : 5011LTFCD6026

(Model No. may contain prefix and/or suffix characters)

Catalog No : Y9208

Rework No : N/A

Directives :

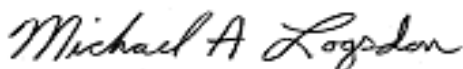
Low Voltage Directive 2014/35/EU

Harmonized Standards Used :

EN 60034-1: 2010 (IEC 60034-1: 2010)

EN 60034-5: 2001/A1:2007 (IEC 60034-5: 2000/A1:2006)

Authorized Representative:



Michael A. Logsdon
Vice President, Technology

Authorized Representative in the Community:



Julian Clark
Marketing Engineer

Created on 09/01/2022

CE 22