

PRODUCT INFORMATION PACKET

marathon®
Motors

Model No: 5011LSVFS16546

Catalog No: 5011LSVFS16546

XRI®-SD Severe Duty Motor, 450 HP, 3 Ph, 60 Hz, 4160 V, 1800 RPM, 5011LSC Frame

Regal and Marathon are trademarks of Regal Rexnord Corporation or one of its affiliated companies.

©2023 Regal Rexnord Corporation, All Rights Reserved. MC017097E

The logo for Regal Rexnord, featuring a stylized 'R' icon followed by the text 'RegalRexnord'.



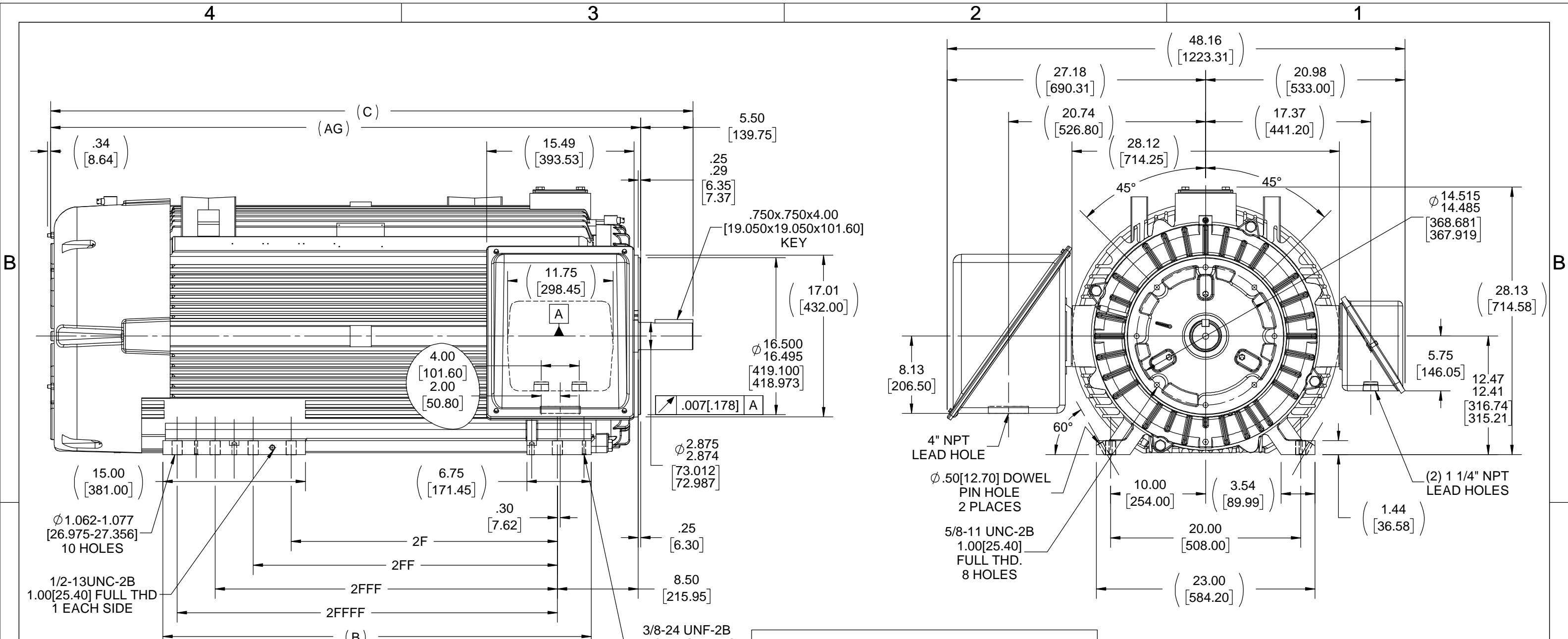
Nameplate Specifications

Output HP	450 Hp	Output KW	340.0 kW
Frequency	60 Hz	Voltage	4160 V
Current	57.5 A	Speed	1782 rpm
Service Factor	1.15	Phase	3
Efficiency	95.8 %	Power Factor	85.5
Duty	Continuous	Insulation Class	F
Design Code	B	KVA Code	G
Frame	5011LSC	Enclosure	Totally Enclosed Fan Cooled
Thermal Protection	No Protection	Ambient Temperature	40 °C
Drive End Bearing Size	6318	Opp Drive End Bearing Size	6314
UL	No	CSA	Y
CE	N	IP Code	56
Number of Speeds	1		

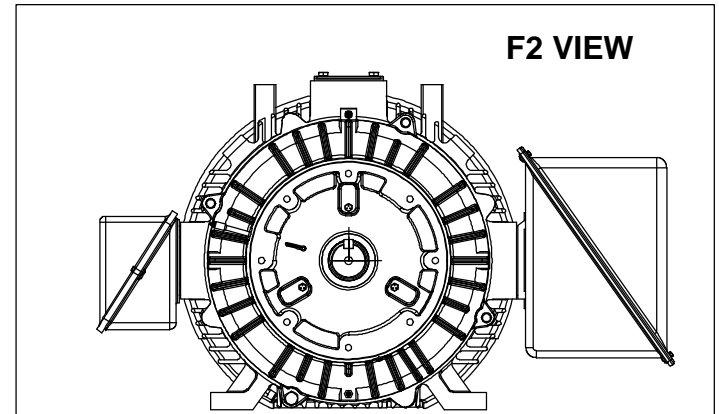
Technical Specifications

Electrical Type	Squirrel Cage Induction Run	Starting Method	Across The Line
Poles	4	Rotation	Reversible
Resistance Main	.108 Ohms	Mounting	Rigid Base
Motor Orientation	Horizontal	Drive End Bearing	Ball
Opp Drive End Bearing	Ball	Frame Material	Cast Iron
Shaft Type	LS	Assembly/Box Mounting	F1/F2 CAPABLE
Connection Drawing	A-EE7300FW	Outline Drawing	SS558200-4950

This is an uncontrolled document once printed or downloaded and is subject to change without notice. Date Created:04/18/2023



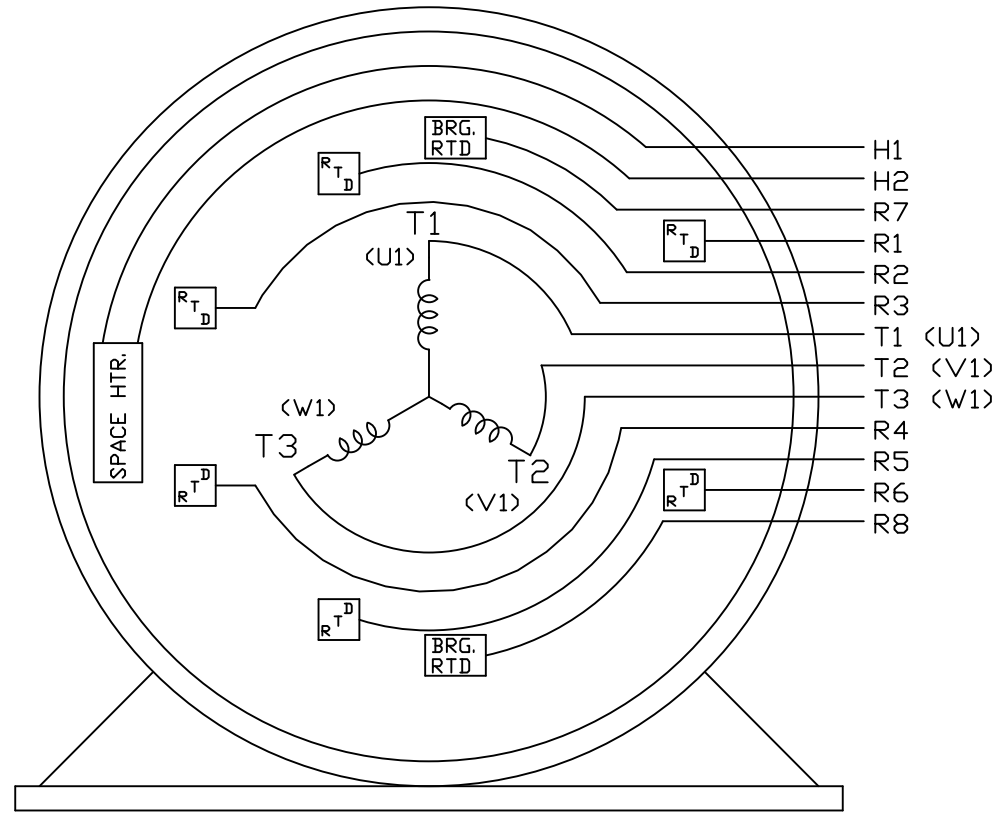
- NOTES:**
1. MAIN CONDUIT BOX CAN BE ROTATED IN 90° STEPS.
 2. AUX. CONDUIT BOX CAN BE ROTATED 180°.
 3. NAMEPLATES TO BE READ FROM MAIN CONDUIT BOX SIDE OF MOTOR.
 4. MOTOR WEIGHT (MAXIMUM) = 5,500 Lbs. [2495 Kg]



DASH	FRAME	B	C	AG	2F	2FF	2FFF	2FFFF	DRAWING REVISION	REVISION BY	DATE	TOLERANCES UNLESS OTHERWISE SPECIFIED:	DRAWN BY	DATE	DESCRIPTION		
4950	5009LSC	45.05 [1144.27]	67.57 [1716.28]	62.07 [1576.58]	28.00 [711.20]	---	---	---	B	ECO	DATE	DEC. X ±0.1 [±2.5]	DINESH	09/23/2020	REGAL™ Regal Beloit America, Inc.		
4950	5010LSC	45.05 [1144.27]	67.57 [1716.28]	62.07 [1576.58]	---	32.00 [812.80]	---	---	ECO-0192738	APPROVED BY	DATE	.XX ±0.03 [±0.76]	A. KEETHA	09/23/2020	OUTLINE		
4950	5011LSC	45.05 [1144.27]	67.57 [1716.28]	62.07 [1576.58]	---	---	36.00 [914.40]	---	NEW DRAWING RELEASE			.XXX ±0.005 [±0.127]			5009/12 LSC FR. - C'FACE - AUX. C'BOX-VIB		
4950	5012LSC	45.05 [1144.27]	67.57 [1716.28]	62.07 [1576.58]	---	---	---	40.00 [1016.00]	COPYRIGHT REGAL BELOIT AMERICA, INC. ALL RIGHTS RESERVED. PROPRIETARY AND CONFIDENTIAL INFORMATION - THIS DOCUMENT IS THE PROPERTY OF REGAL BELOIT AMERICA, INC. ("OWNER") AND CONTAINS OWNER'S PROPRIETARY INFORMATION. ANY PERSON, CORPORATION OR OTHER FIRM RECEIVING IT IS DEEMED, BY RECEIVING IT, TO AGREE THAT IT, AND/OR ANY PART OF IT, SHALL NOT BE DISCLOSED TO ANY PERSON, CORPORATION OR OTHER ENTITY, DUPLICATED, AND/OR USED, EXCEPT AS EXPRESSLY APPROVED IN WRITING IN ADVANCE BY OWNER. THIS DOCUMENT SHALL BE RETURNED TO OWNER UPON REQUEST. IT MAY BE SUBJECT TO CERTAIN RESTRICTIONS UNDER APPLICABLE EXPORT CONTROL LAWS AND REGULATIONS.			.XXX ±0.005 [±0.127]			MATERIAL	PROCESS/FINISH	
												REMOVE BURRS & BREAK SHARP EDGES: .003/.015 [.076/.381] X 45° CORNER FILLETS: R.02 [.51] MACHINED SURFACES: 200 INCH/mm 5.1 mm SHOWN IN [BRACKETS]	THIRD ANGLE PROJECTION		SIZE B	DRAWING NUMBER SS558200	SHEET 1 OF 1

THREE PHASE - SINGLE VOLTAGE
 MOTOR OR INDUCTION GENERATOR
 WITH 6 RTD'S 2 PER PHASE
 MARKED R1 THRU R6 & 2 BRG.
 RTD'S MARKED R7 & R8.

TO REVERSE ROTATION:
 INTERCHANGE ANY TWO
 LINE LEAD CONNECTIONS.



VIEW OF TERMINAL END

IF MOTOR OR GEN. HAS 6 LEADS	
T1 (U1)	L1
T2 (V1)	L2
T3 (W1)	L3

			✓ MAX. SURFACE ROUGHNESS UNLESS NOTED OTHERWISE	UNLESS OTHERWISE SPECIFIED DIMENSIONS ARE IN INCHES TOL. ON XX± XXX±.005 XXXX±.0005 ANGLES±		
2	02-13-2012	ADDED IEC NUMBERS	MOL	MARATHON ELECTRIC	DRWN BY	KL 09-16-1997
1	09-17-1997	NEW DRAWING	KL	WAUSAU, WISCONSIN 54401	CHKD BY	ML 09-16-1997
REV	DATE	CHANGE	NAME	PART NAME	DRWG NO	
		MU16656		CONNECTION DIAGRAM - SINGLE VOLTAGE 3Ø MOTOR OR INDUCTION GENERATOR	A- EE7300FW	

SHOP BOOK

PURCHASED

DISTRIBUTION - WA - LB - WP - LM - YK

CADD FILE NO.

EE7300FW

Data Sheet

Date: 3/14/2023
Customer: _____
Attention: _____
Submitted by: _____



5011LSVFS16546
 503732 FAN
Submittal
 Data @ **4160 V**

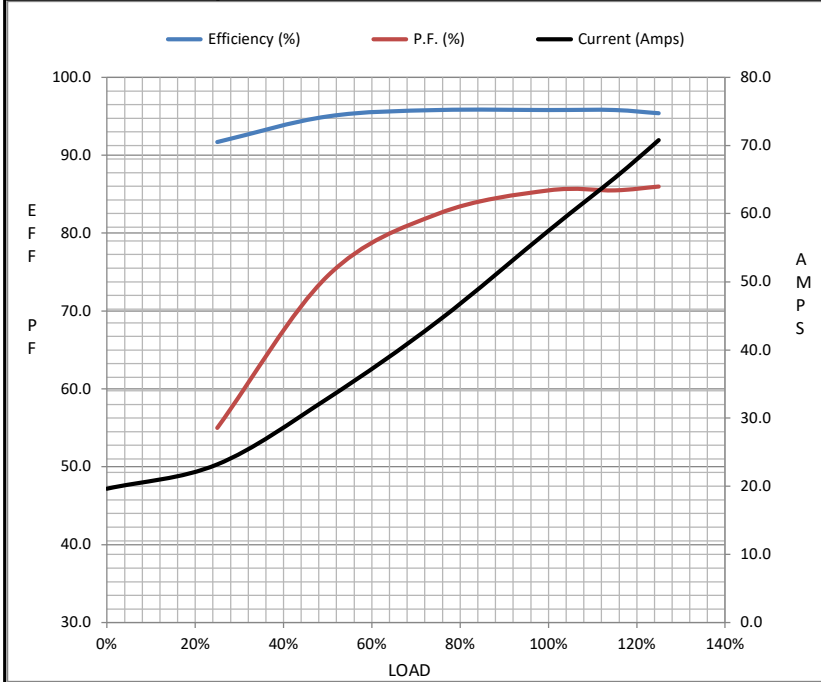
Motor Load Data

Load	0%	25%	50%	75%	100%	115%	125%	LR	
Current (Amps)	19.6	23.2	32.9	44.2	57.5	65.2	70.8	359	
Torque (ft-lb)	0.00	330	660	990	1,325	1,525	1,660	2,350	
RPM	1800	1795	1792	1788	1782	1,780	1778	0	
Efficiency (%)		91.7	95.0	95.8	95.8	95.8	95.4		
P.F. (%)	5.0	55.0	74.5	82.5	85.5	85.5	86.0	27.0	

Motor Speed Data

	LR	Pull-Up	BD	Rated	Idle
Speed (RPM)	0	900	1700	1782	1800
Current (Amps)	359	318	207	57.5	19.6
Torque (ft-lb)	2,350	2,250	3,850	1,325	0.00

Information Block				
HP	450.0			
Sync. RPM	1800			
Frame	5011			
Enclosure	TEFC			
Construction	TFN			
Voltage	4160 V			
Frequency	60 Hz			
Design	B			
LR Code letter	G			
Service Factor	1.15			
Temp Rise @ FL	80 ° C			
Duty	CONT			
Ambient	40 ° C			
Elevation	3,300 feet			
Rotor/Shaft wk ²	205 Lb-Ft ²			
Ref Wdg	V511427 NONE			
Sound Pressure @ 1M	88 dBA			
VFD Rating	NONE			
Outline Dwg	SS558200-4950			
Conn. Diag	A-EE7300FW			
Additional Specifications:				
0				
0				
EQUIV CKT (OHMS / PHASE)				
R1	R2	X1	X2	Xm
0.3880	0.4760	3.4110	5.4270	123.6370



Speed - Torque Curve

