

PRODUCT INFORMATION PACKET

marathon®
Motors

Model No: 5011LSTHFCD9077

Catalog No: Y9262

XRI®-841 Severe Duty Motor, 350 HP, 3 Ph, 60 Hz, 460 V, 1200 RPM, 5011LS Frame, TEFC



Regal and Marathon are trademarks of Regal Rexnord Corporation or one of its affiliated companies.

©2022 Regal Rexnord Corporation, All Rights Reserved. MC017097E

RegalRexnord

Nameplate Specifications

Output HP	350 Hp	Output KW	260.0 kW
Frequency	60 Hz	Voltage	460 V
Current	397.0 A	Speed	1191 rpm
Service Factor	1.15	Phase	3
Efficiency	95.8 %	Power Factor	86.1
Duty	Continuous	Insulation Class	H
Design Code	B	KVA Code	G
Frame	5011LS	Enclosure	Totally Enclosed Fan Cooled
Thermal Protection	No Protection	Ambient Temperature	40 °C
Drive End Bearing Size	6322	Opp Drive End Bearing Size	6319
UL	Recognized	CSA	Y
CE	Y	IP Code	56
Number of Speeds	1		

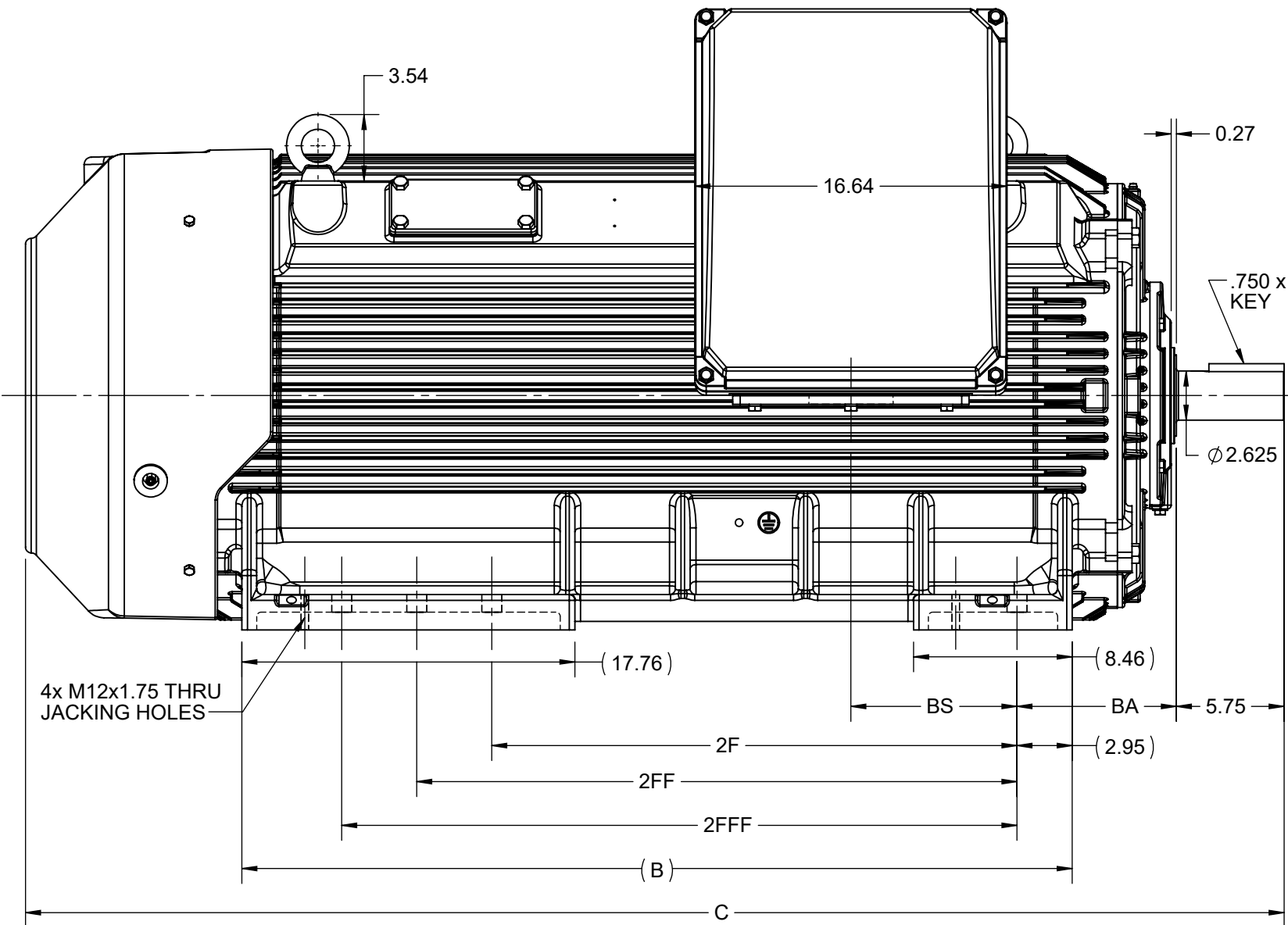
Technical Specifications

Electrical Type	Squirrel Cage Inverter Rated	Starting Method	Line Or Inverter
Poles	6	Rotation	Reversible
Resistance Main	.0085 Ohms	Mounting	Rigid Base
Motor Orientation	Horizontal	Drive End Bearing	Ball
Opp Drive End Bearing	Ball	Frame Material	Cast Iron
Shaft Type	LS	Shaft Diameter	2.875 in
Assembly/Box Mounting	F1/F2 CAPABLE	Inverter Load	CONSTANT 2:1/VARIABLE 10:1
Connection Drawing	EE7300CD	Outline Drawing	SS621043

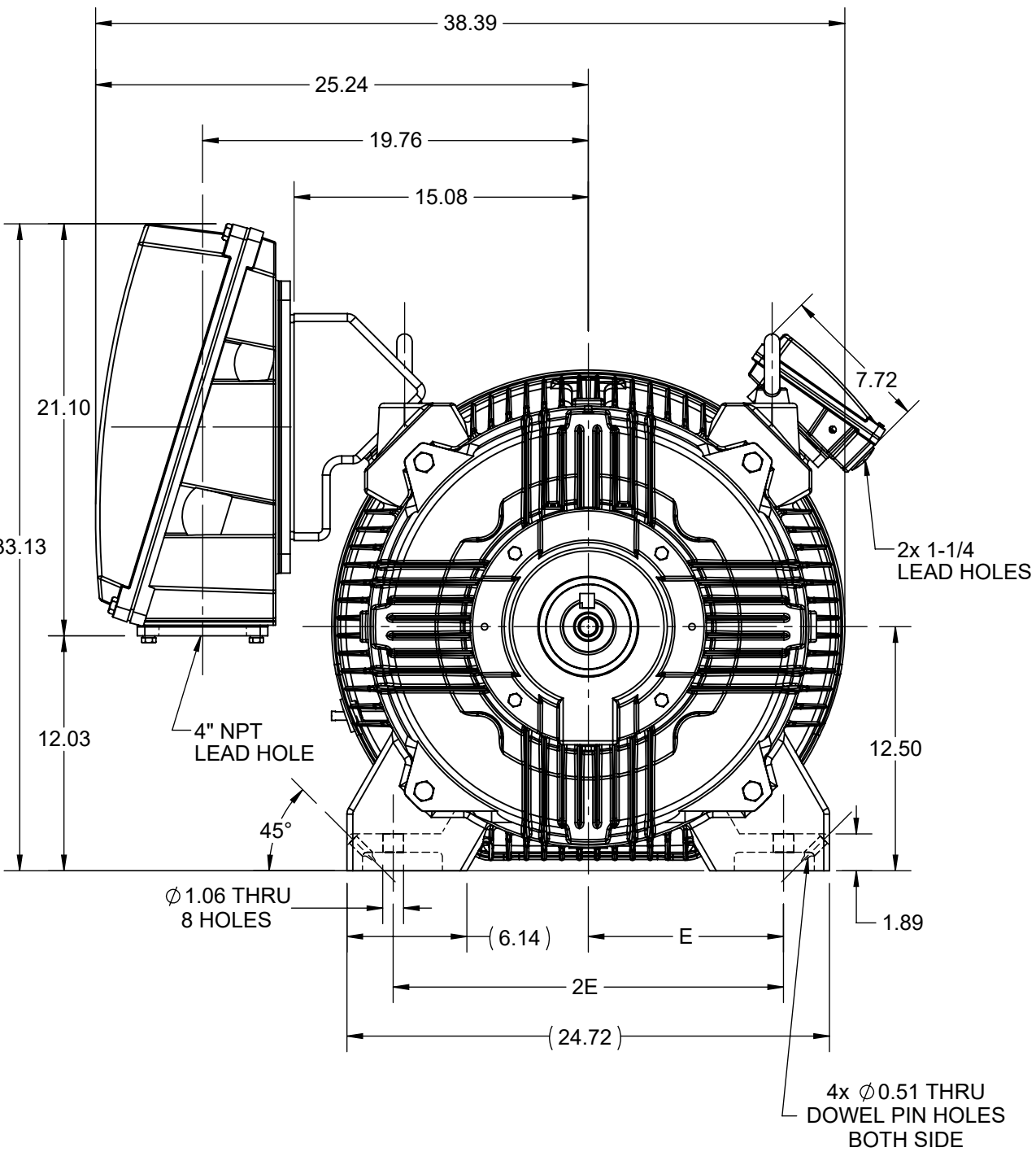
This is an uncontrolled document once printed or downloaded and is subject to change without notice. Date Created:11/29/2022

4				3				2		1
B	C	E	2E	2F	2FF	2FFF	BA	BS	MOUNTING	
44.27	67.10	10.00	20.00	28.00	32.00	36.00	8.50	8.85	F1/F2/F3	

B

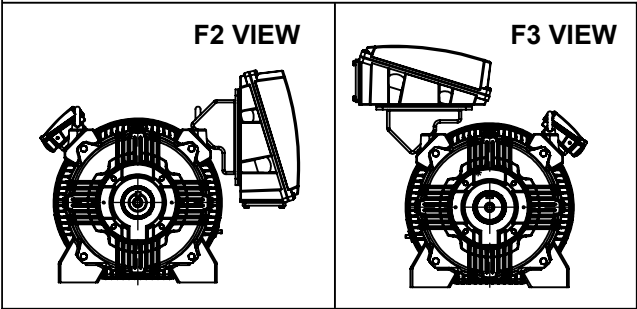


A



B

A




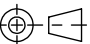
4

DRAWING REVISION C	REVISION BY BISWA	REV DATE/© DATE 11/01/2021
ECO CR-0000524	APPROVED BY SBD	DATE 11/01/2021
ECO DESCRIPTION		
DRAWING UPDATED		
COPYRIGHT (PER REVISION DATE) REGAL BELOIT AMERICA, INC. ALL RIGHTS RESERVED. PROPRIETARY AND CONFIDENTIAL INFORMATION - THIS DOCUMENT IS THE PROPERTY OF REGAL BELOIT AMERICA, INC. ("OWNER") AND CONTAINS OWNER'S PROPRIETARY INFORMATION. ANY PERSON, CORPORATION OR OTHER FIRM RECEIVING IT IS DEEMED, BY RECEIVING IT, TO AGREE THAT IT, AND/OR ANY PART OF IT, SHALL NOT BE DISCLOSED TO ANY PERSON, CORPORATION OR OTHER ENTITY, DUPLICATED, AND/OR USED, EXCEPT AS EXPRESSLY APPROVED IN WRITING IN ADVANCE BY OWNER. THIS DOCUMENT SHALL BE RETURNED TO OWNER UPON REQUEST. IT MAY BE SUBJECT TO CERTAIN RESTRICTIONS UNDER APPLICABLE EXPORT CONTROL LAWS AND REGULATIONS.		

3

PRIMARY DIMENSIONS ARE INCH
mm DIMENSIONS IN [BRACKETS]
ARE FOR REFERENCE ONLY

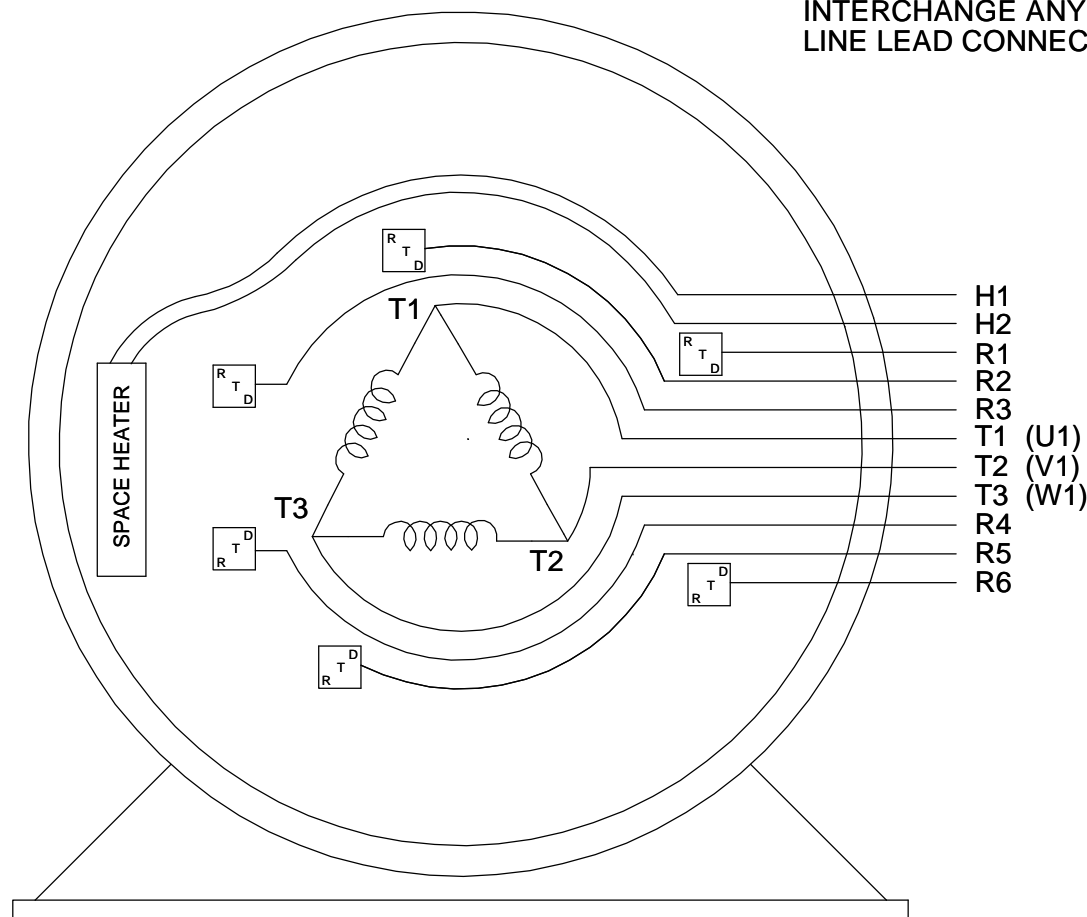
2

DRAWN BY BISWA	 Regal Beloit America, Inc.		
DATE 17/07/2020			
APPROVED BY SBD	DESCRIPTION		
DATE 17/07/2020	OUTLINE		
REFERENCE	5009-5011LS-B3 MTG-SD		
THIRD ANGLE PROJECTION 	MATERIAL	PROCESS/FINISH	
	SIZE B	DRAWING NUMBER SS621043	SHEET 1 OF 1

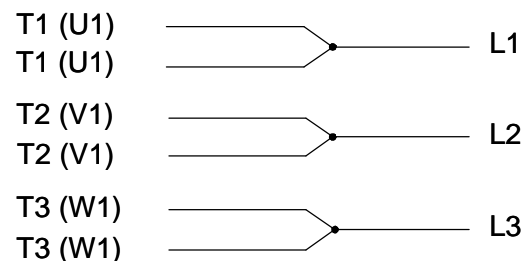
1

THREE PHASE - SINGLE VOLTAGE
MOTOR OR INDUCTION GENERATOR
WITH 6 RTD'S 2 PER PHASE
MARKED R1 THRU R6, AND ONE
SPACE HEATER MARKED H1 & H2.

TO REVERSE ROTATION
INTERCHANGE ANY TWO
LINE LEAD CONNECTIONS.


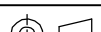


IF MOTOR HAS MULTIPLE
T'S PER LEAD CONNECT
TOGETHRE LIKE T'S



A-9806 DECAL

VIEW OF TERMINAL END

DRAWING REVISION C	REVISION BY SD	REV DATE/© DATE 12/13/2019	TOLERANCES (EXCEPT AS NOTED):				DRAWN BY RM		<div> Regal Beloit America, Inc.</div>		
ECO ECO-0178718	APPROVED BY GM	DATE 12/13/2019	DEC.	INCH	mm	ANGLE	DATE 03-27-1991				
ECO DESCRIPTION			.X	±0.1	[±3]	±7° 30"	APPROVED BY ML	DESCRIPTION CONNECTION DIAGRAM SINGLE VOLT - 3<MOD-DIAM> MOTOR			
LOGO UPDATED			.XX	±0.02	[±0.5]		DATE 03-27-1991				
COPYRIGHT (PER REVISION DATE) REGAL BELOIT AMERICA, INC. ALL RIGHTS RESERVED. PROPRIETARY AND CONFIDENTIAL INFORMATION - THIS DOCUMENT IS THE PROPERTY OF REGAL BELOIT AMERICA, INC. ("OWNER") AND CONTAINS OWNER'S PROPRIETARY INFORMATION. ANY PERSON, CORPORATION OR OTHER FIRM RECEIVING IT IS DEEMED, BY RECEIVING IT, TO AGREE THAT IT, AND/OR ANY PART OF IT, SHALL NOT BE DISCLOSED TO ANY PERSON, CORPORATION OR OTHER ENTITY, DUPLICATED, AND/OR USED, EXCEPT AS EXPRESSLY APPROVED IN WRITING IN ADVANCE BY OWNER. THIS DOCUMENT SHALL BE RETURNED TO OWNER UPON REQUEST. IT MAY BE SUBJECT TO CERTAIN RESTRICTIONS UNDER APPLICABLE EXPORT CONTROL LAWS AND REGULATIONS.			.XXX	±0.005	[±0.13]		REFERENCE	MATERIAL	PROCESS/FINISH		
			.XXXX	±0.0005	[±0.013]						
			REMOVE BURRS & BREAK SHARP EDGES: .003/.015 [.08/.38] X 45 °								
			CORNER FILLETS: R.02 [.5]								
			MACHINED SURFACES: 200/INCH 5.1/√mm				THIRD ANGLE PROJECTION		SIZE A	DRAWING NUMBER EE7300CD	SHEET 1 OF 1
			mm DIMENSIONS IN [BRACKETS] ARE FOR REFERENCE ONLY								



P.O. BOX 8003
WAUSAU, WI 54401-8003
PH. 715-675-3311

DATA VOLTS: 460

CERTIFICATION DATA SHEET

CUSTOMER: _____
ORDER #: _____
CONN. DIAGRAM: EE7300CD
OUTLINE: SS621043
WINDING: HA33156023 NONE 1
SPEED: _____

CUSTOMER P.O. #: _____
REFERENCE MODEL #: 5011LSTHFCD9077
CAT #: W658
CUSTOMER PART #: _____
MOUNTING: F1/F2 CAPABLE

TYPICAL MOTOR PERFORMANCE DATA

HP	KW	SYNC RPM	FL RPM	FRAME	ENCLOSURE	TYPE	KVA CODE	DESIGN
350	261	1200	1191	5011LS	TEFC	TFC	G	B

PH	HZ	VOLTS	AMPS	START TYPE	DUTY	INSL	S.F.	AMB(° C)	ELEV.(Ft.)
3	60	460	397	LINE OR INVERTER	CONT	H	1.15	40	3300

F.L. EFF	3/4 LD EFF	1/2 LD EFF	GTD EFF	ELECT. TYPE
95.8	96.2	95.9	95.4	SQ CAGE INV RATED
F.L. PF	3/4 LD PF	1/2 LD PF		
86.1	84.3	78.1		

F.L. TORQUE	LR AMPS @ 460 V	L.R. TORQUE	B.D. TORQUE	F.L. RISE (° C)
1,544 LB-FT	2,600	3,230 LB-FT	3,300 LB-FT	214%

SOUND PRESSURE @ 3 FT.	SOUND	POWER	ROTOR WK²	MAX. LOAD WK²	SAFE STALL TIME	STARTS/HOUR	APROX. MOTOR WGT
85 dBA	94 dBA	296 LB-FT²	-	41 SEC.	2	4633 LB.	

*** SUPPLEMENTAL INFORMATION ***

DE BRACKET TYPE	ODE BRACKET TYPE	MOUNT TYPE	MOTOR ORIENTATION	SEVERE DUTY	HAZARDOUS LOCATION	DRIP COVER	SCREENS	PAINT
STANDARD	STANDARD	RIGID	HORIZONTAL	PREMIUM SEVERE DUTY	NONE	NO	NONE	BLUE (EPOXY)

BEARINGS	GREASE	SHAFT TYPE	SPECIAL DE	SPECIAL ODE	SHAFT MATERIAL	FRAME MATERIAL
DE ODE						
BALL BALL	POLYREX EM	LS	NONE	NONE	1045 HOT ROLLED (C-204)	CAST IRON
6322 6319						

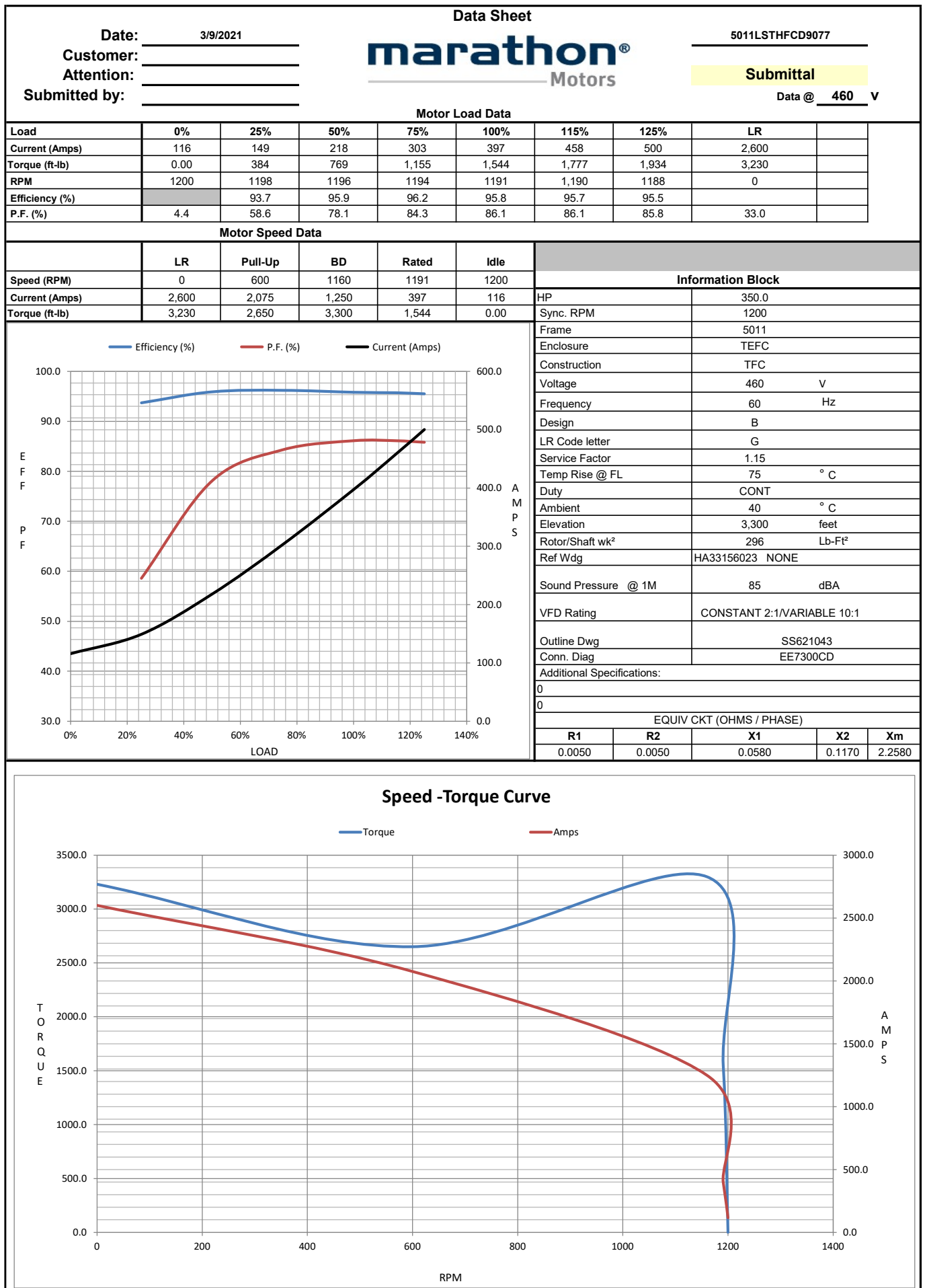
THERMOSTATS	PROTECTORS	WDG RTD's	BRG RTD's	THERMISTORS	CONTROL	SPACE HEATERS
NONE	NOT	ATINUM TWO PER PHASE	PLATINUM DE AND ODE	NONE	FALSE	SILICONE FREE 120V

R1 (ohms/ph)	R2 (ohms/ph)	X1 (ohms/ph)	X2 (ohms/ph)	Xm (ohms/ph)	VIBRATION (in/sec)	FLOAT
0.005	0.005	0.058	0.117	2.258	0.080	ODE

* N O T E S *	INVERTER TORQUE: CONSTANT 2:1/VARIABLE 10:1 INV. HP SPEED RANGE: NONE
	ENCODER: NONE NONE NONE PPR
	BRAKE: NONE NONE FT-LB: NA VOLTAGE: NONE UL: V - L,ME-INS,CONST UL REC

PREPARED BY:	DATE:	0
	3/9/2021	

FORM: 3531 REV_4 2/27/06



EC Declaration of Conformity

The undersigned representing
the manufacturer:

Regal Beloit America
100 East Randolph St.
Wausau, WI 54401

and the authorized representative
established within the Community:

Marathon Electric UK
6F Thistleton Road Ind. Estate
Market Overton
Oakham, Rutland LE15 7PP UK

are committed to providing customers with products that comply with applicable regulations and international protocols to which they are subject, including the requirements of the European Parliament Directive on the Harmonization of the laws relating to electrical equipment designed for use within certain voltage limits (2014/35/EU).

Regal Beloit America declares that the following product(s), to which this declaration relates, are in conformity with the relevant sections of the EC standards listed below.

This statement supersedes any statements previously issued pertaining to the product(s) listed below and is subject to change without notice.

Model No : 5011LSTHFCD9077

(Model No. may contain prefix and/or suffix characters)

Catalog No : Y9262

Rework No : N/A

Directives :

Low Voltage Directive 2014/35/EU

Harmonized Standards Used :

EN 60034-1: 2010 (IEC 60034-1: 2010)

EN 60034-5: 2001/A1:2007 (IEC 60034-5: 2000/A1:2006)

Authorized Representative:



Michael A. Logsdon
Vice President, Technology

Authorized Representative in the Community:



Julian Clark
Marketing Engineer

Created on 09/01/2022

CE 22