

PRODUCT INFORMATION PACKET



Model No: 5011LSTFCD6578
Catalog No: Y9245
400,1200,TEFC,5011LS,3/60/460
Miscellaneous

Regal and Marathon are trademarks of Regal Rexnord Corporation or one of its affiliated companies.
©2021 Regal Rexnord Corporation, All Rights Reserved. MC017097E



Nameplate Specifications

Output HP	400 Hp	Output KW	300.0 kW
Frequency	60 Hz	Voltage	460 V
Current	456.0 A	Speed	1191 rpm
Service Factor	1.15	Phase	3
Efficiency	95.8 %	Power Factor	85.7
Duty	Continuous	Insulation Class	H
Design Code	B	KVA Code	G
Frame	5011LS	Enclosure	Totally Enclosed Fan Cooled
Thermal Protection	No	Ambient Temperature	40 °C
Drive End Bearing Size	6322	Opp Drive End Bearing Size	6319
UL	Recognized	CSA	Y
CE	Y	IP Code	55
Number of Speeds	1		

Technical Specifications

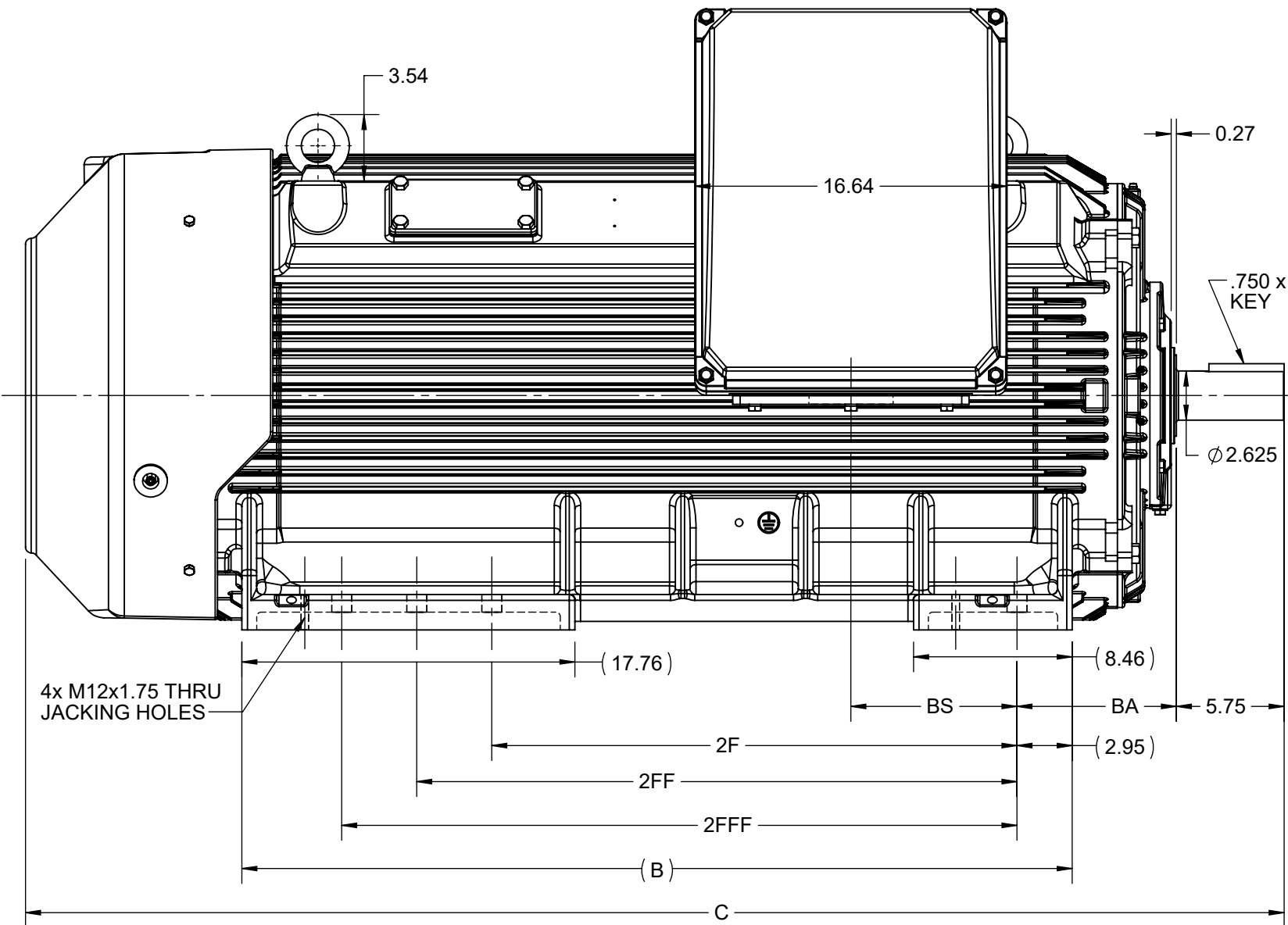
Electrical Type	Squirrel Cage Inverter Rated	Starting Method	Line Or Inverter
Poles	6	Rotation	Selective Clockwise
Resistance Main	.0073 Ohms	Mounting	Rigid Base
Motor Orientation	Horizontal	Drive End Bearing	Ball
Opp Drive End Bearing	Ball	Frame Material	Cast Iron
Shaft Type	LS	Assembly/Box Mounting	F1/F2 CAPABLE
Outline Drawing	SS621043	Connection Drawing	EE7300CD

This is an uncontrolled document once printed or downloaded and is subject to change without notice. Date Created:10/11/2021

4				3				2		1
B	C	E	2E	2F	2FF	2FFF	BA	BS	MOUNTING	
44.27	67.10	10.00	20.00	28.00	32.00	36.00	8.50	8.85	F1/F2/F3	

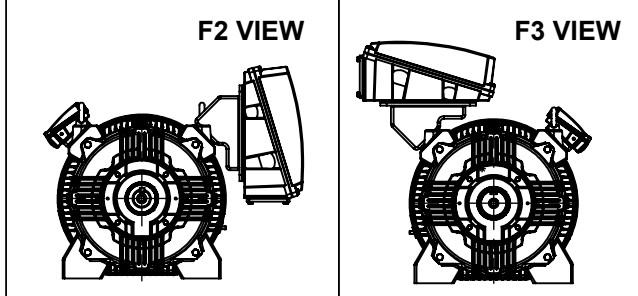
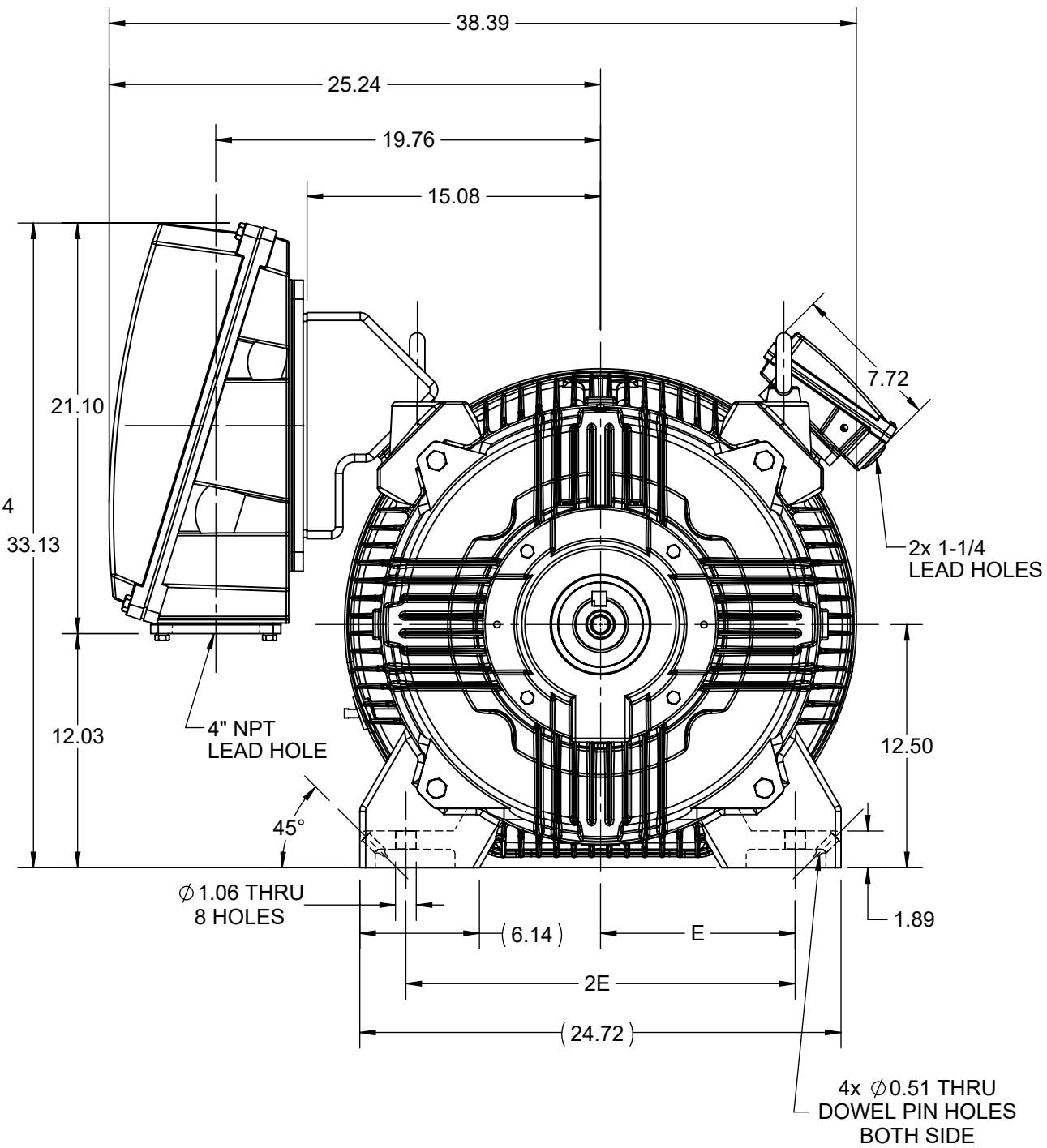
B

A



B

A



4


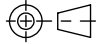
3

2

1

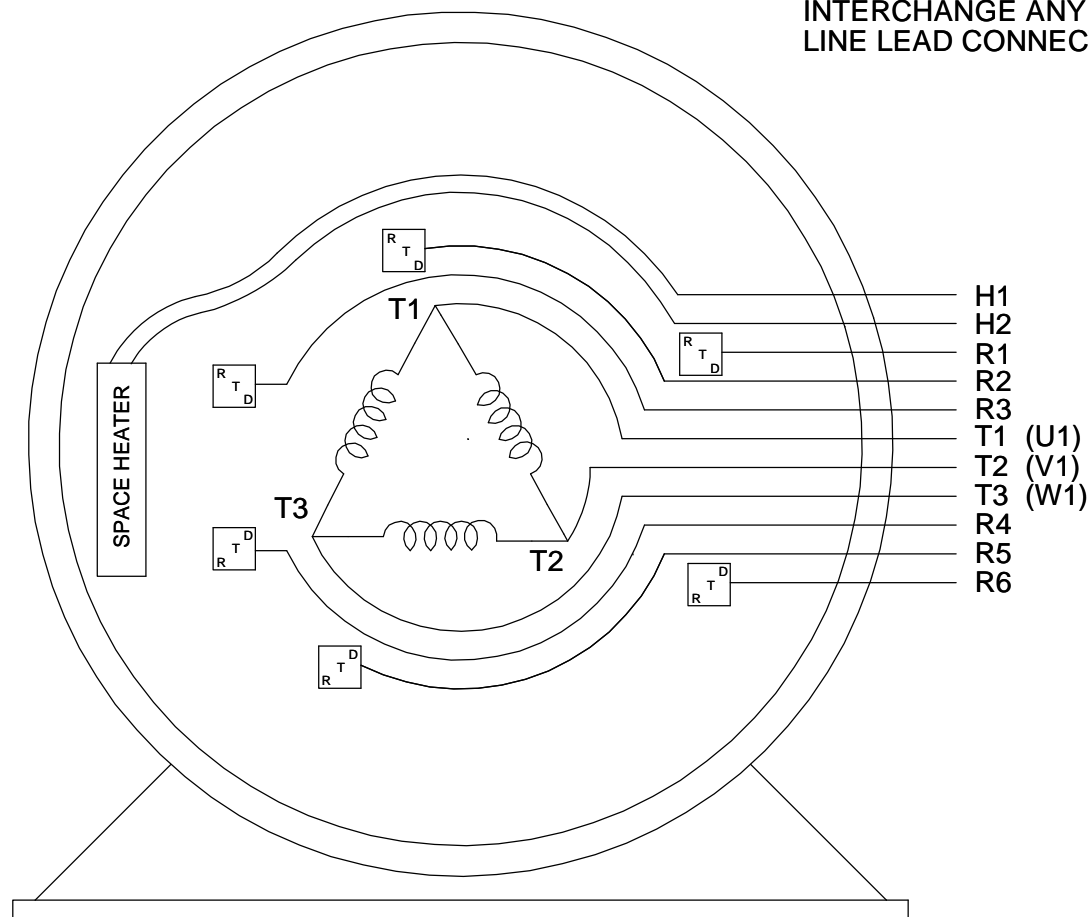
DRAWING REVISION C	REVISION BY BISWA	REV DATE/© DATE 11/01/2021
ECO CR-0000524	APPROVED BY SBD	DATE 11/01/2021
ECO DESCRIPTION		
DRAWING UPDATED		
COPYRIGHT (PER REVISION DATE) REGAL BELOIT AMERICA, INC. ALL RIGHTS RESERVED. PROPRIETARY AND CONFIDENTIAL INFORMATION - THIS DOCUMENT IS THE PROPERTY OF REGAL BELOIT AMERICA, INC. ("OWNER") AND CONTAINS OWNER'S PROPRIETARY INFORMATION. ANY PERSON, CORPORATION OR OTHER FIRM RECEIVING IT IS DEEMED, BY RECEIVING IT, TO AGREE THAT IT, AND/OR ANY PART OF IT, SHALL NOT BE DISCLOSED TO ANY PERSON, CORPORATION OR OTHER ENTITY, DUPLICATED, AND/OR USED, EXCEPT AS EXPRESSLY APPROVED IN WRITING IN ADVANCE BY OWNER. THIS DOCUMENT SHALL BE RETURNED TO OWNER UPON REQUEST. IT MAY BE SUBJECT TO CERTAIN RESTRICTIONS UNDER APPLICABLE EXPORT CONTROL LAWS AND REGULATIONS.		

PRIMARY DIMENSIONS ARE INCH
mm DIMENSIONS IN [BRACKETS]
ARE FOR REFERENCE ONLY

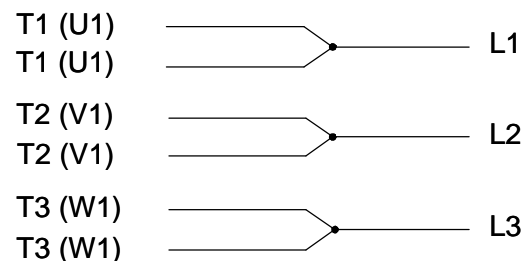
DRAWN BY BISWA	 Regal Beloit America, Inc.		
DATE 17/07/2020			
APPROVED BY SBD	DESCRIPTION		
DATE 17/07/2020	OUTLINE		
REFERENCE	5009-5011LS-B3 MTG-SD		
THIRD ANGLE PROJECTION 	MATERIAL		PROCESS/FINISH
	SIZE B	DRAWING NUMBER SS621043	SHEET 1 OF 1

THREE PHASE - SINGLE VOLTAGE
MOTOR OR INDUCTION GENERATOR
WITH 6 RTD'S 2 PER PHASE
MARKED R1 THRU R6, AND ONE
SPACE HEATER MARKED H1 & H2.

TO REVERSE ROTATION
INTERCHANGE ANY TWO
LINE LEAD CONNECTIONS.



IF MOTOR HAS MULTIPLE
T'S PER LEAD CONNECT
TOGETHRE LIKE T'S



A-9806 DECAL

VIEW OF TERMINAL END

DRAWING REVISION C	REVISION BY SD	REV DATE/© DATE 12/13/2019	TOLERANCES (EXCEPT AS NOTED): <div><div>DEC.</div><div>INCH</div><div>mm</div><div>ANGLE</div></div> <div><div>.X</div><div>±0.1</div><div>[±3]</div><div>±7' 30"</div></div> <div><div>.XX</div><div>±0.02</div><div>[±0.5]</div></div> <div><div>.XXX</div><div>±0.005</div><div>[±0.13]</div></div> <div><div>.XXXX</div><div>±0.0005</div><div>[±0.013]</div></div> <div>REMOVE BURRS & BREAK SHARP EDGES: .003/.015 [.08/.38] X 45 °</div> <div>CORNER FILLETS: R.02 [.5]</div> <div>MACHINED SURFACES: 200 / INCH 5.1 / mm</div> <div>mm DIMENSIONS IN [BRACKETS] ARE FOR REFERENCE ONLY</div>				DRAWN BY RM	<div><div>REGAL</div><div>Regal Beloit America, Inc.</div></div> <div>DESCRIPTION</div> <div>CONNECTION DIAGRAM</div> <div>SINGLE VOLT - 3<MOD-DIAM> MOTOR</div> <div>MATERIAL</div> <div>PROCESS/FINISH</div> <div>SIZE</div> <div>DRAWING NUMBER</div> <div>SHEET</div>								
ECO ECO-0178718	APPROVED BY GM	DATE 12/13/2019					DATE 03-27-1991					APPROVED BY ML	DATE 03-27-1991	SIZE A	DRAWING NUMBER EE7300CD	SHEET 1 OF 1
ECO DESCRIPTION							THIRD ANGLE PROJECTION									
LOGO UPDATED																
COPYRIGHT (PER REVISION DATE) REGAL BELOIT AMERICA, INC. ALL RIGHTS RESERVED. PROPRIETARY AND CONFIDENTIAL INFORMATION - THIS DOCUMENT IS THE PROPERTY OF REGAL BELOIT AMERICA, INC. ("OWNER") AND CONTAINS OWNER'S PROPRIETARY INFORMATION. ANY PERSON, CORPORATION OR OTHER FIRM RECEIVING IT IS DEEMED, BY RECEIVING IT, TO AGREE THAT IT, AND/OR ANY PART OF IT, SHALL NOT BE DISCLOSED TO ANY PERSON, CORPORATION OR OTHER ENTITY, DUPLICATED, AND/OR USED, EXCEPT AS EXPRESSLY APPROVED IN WRITING IN ADVANCE BY OWNER. THIS DOCUMENT SHALL BE RETURNED TO OWNER UPON REQUEST. IT MAY BE SUBJECT TO CERTAIN RESTRICTIONS UNDER APPLICABLE EXPORT CONTROL LAWS AND REGULATIONS.																