

PRODUCT INFORMATION PACKET

Model No: 5011LSTFCD6577
Catalog No: Y9242
350,1200,TEFC,5011LS,3/60/460

Regal and are trademarks of Regal Rexnord Corporation or one of its affiliated companies.
©2022 Regal Rexnord Corporation, All Rights Reserved. MC017097E



Nameplate Specifications

Output HP	350 Hp	Output KW	260.0 kW
Frequency	60 Hz	Voltage	460 V
Current	397.0 A	Speed	1191 rpm
Service Factor	1.15	Phase	3
Efficiency	95.8 %	Power Factor	86.1
Duty	Continuous	Insulation Class	H
Design Code	B	KVA Code	G
Frame	5011LS	Enclosure	Totally Enclosed Fan Cooled
Thermal Protection	No Protection	Ambient Temperature	40 °C
Drive End Bearing Size	6322	Opp Drive End Bearing Size	6319
UL	Recognized	CSA	Y
CE	Y	IP Code	55
Number of Speeds	1		

Technical Specifications

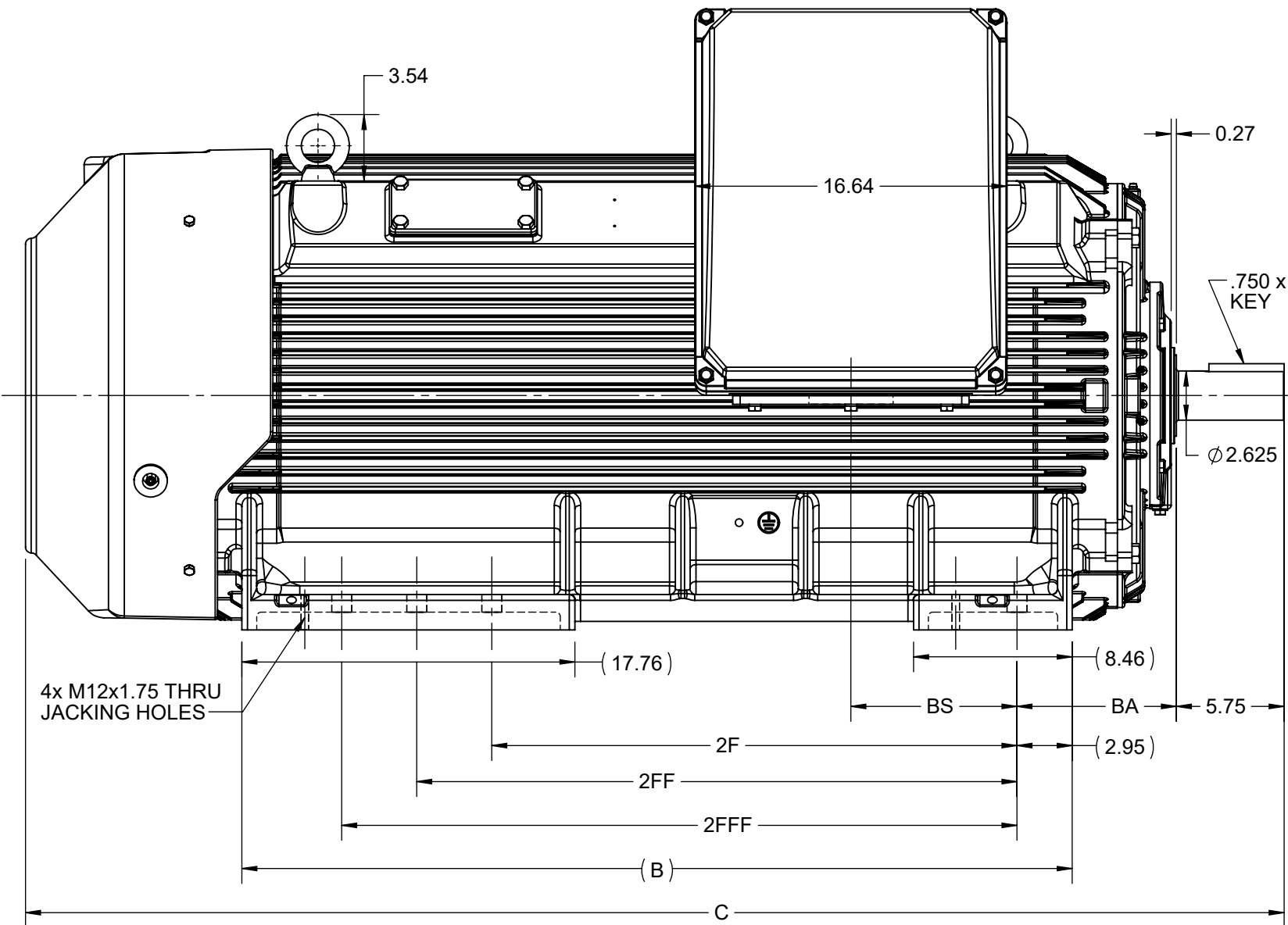
Electrical Type	Squirrel Cage Inverter Rated	Starting Method	Line Or Inverter
Poles	6	Rotation	Selective Clockwise
Resistance Main	.0085 Ohms	Mounting	Rigid Base
Motor Orientation	Horizontal	Drive End Bearing	Ball
Opp Drive End Bearing	Ball	Frame Material	Cast Iron
Shaft Type	LS	Assembly/Box Mounting	F1/F2 CAPABLE
Connection Drawing	EE7300CD	Outline Drawing	SS621043

This is an uncontrolled document once printed or downloaded and is subject to change without notice. Date Created:08/09/2022

4				3				2		1
B	C	E	2E	2F	2FF	2FFF	BA	BS	MOUNTING	
44.27	67.10	10.00	20.00	28.00	32.00	36.00	8.50	8.85	F1/F2/F3	

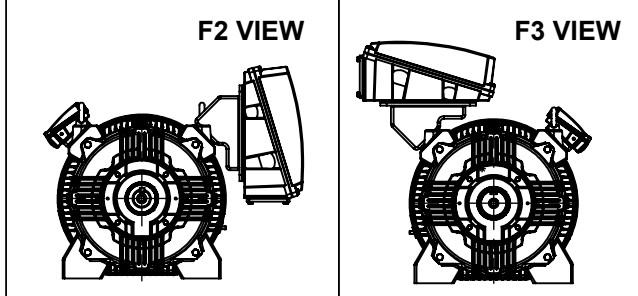
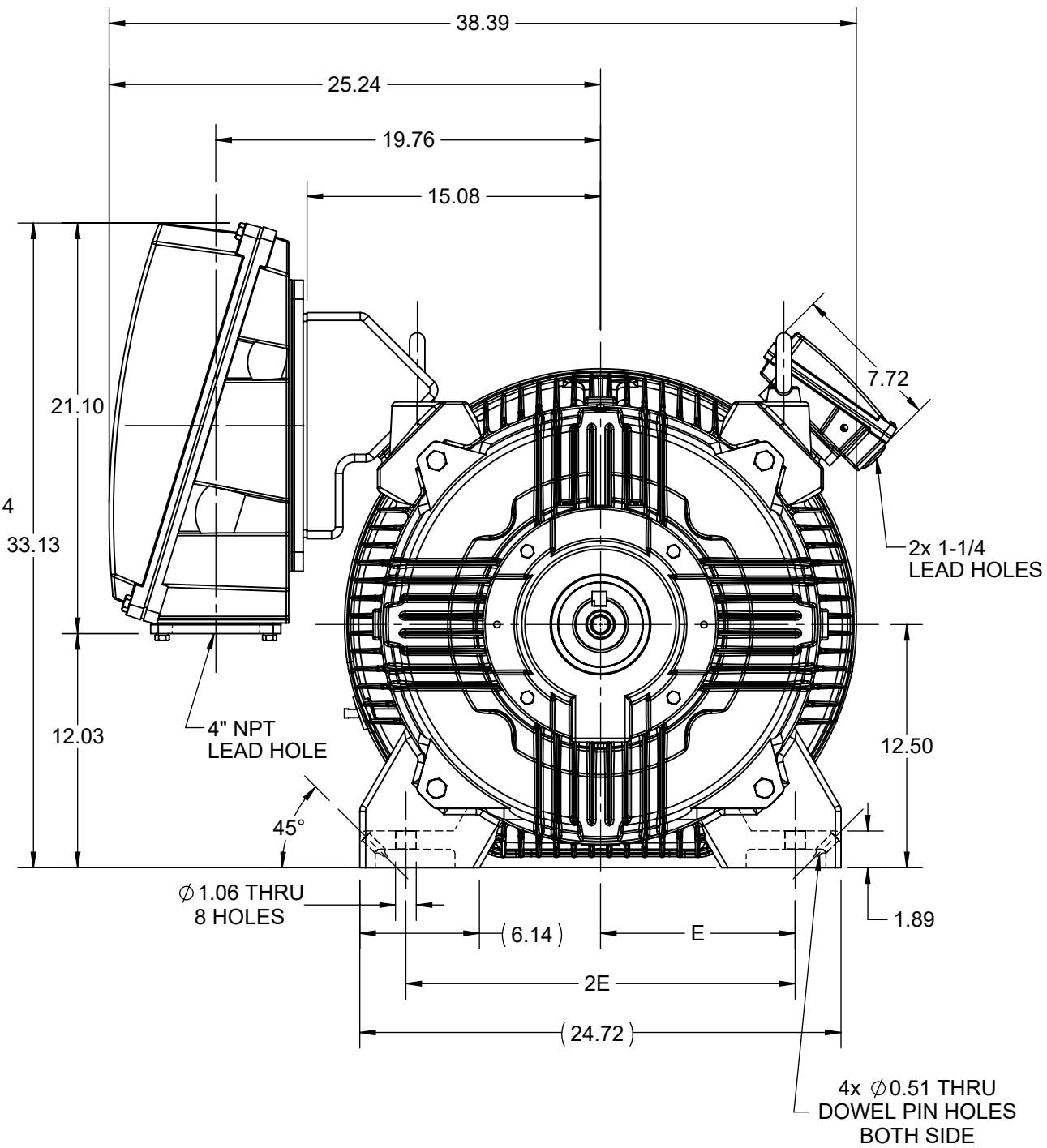
B

A



B

A



4


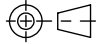
3

2

1

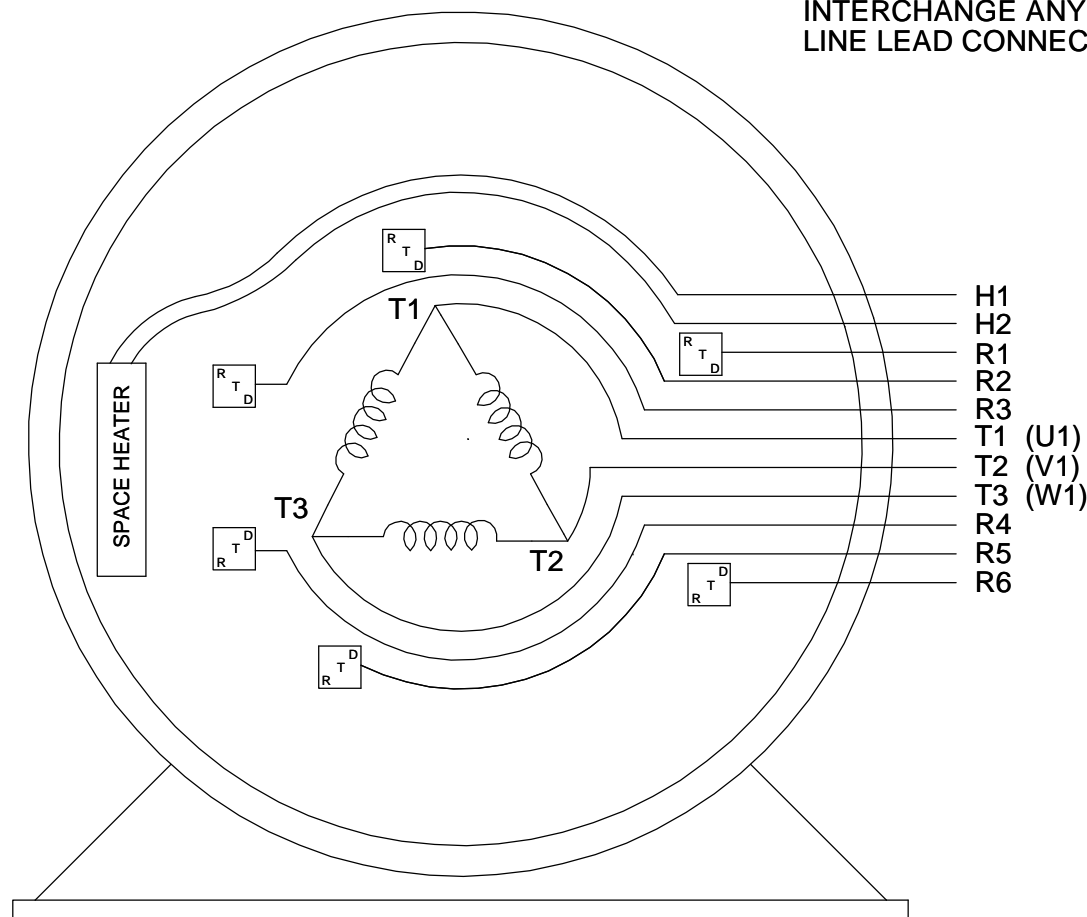
DRAWING REVISION C	REVISION BY BISWA	REV DATE/© DATE 11/01/2021
ECO CR-0000524	APPROVED BY SBD	DATE 11/01/2021
ECO DESCRIPTION		
DRAWING UPDATED		
COPYRIGHT (PER REVISION DATE) REGAL BELOIT AMERICA, INC. ALL RIGHTS RESERVED. PROPRIETARY AND CONFIDENTIAL INFORMATION - THIS DOCUMENT IS THE PROPERTY OF REGAL BELOIT AMERICA, INC. ("OWNER") AND CONTAINS OWNER'S PROPRIETARY INFORMATION. ANY PERSON, CORPORATION OR OTHER FIRM RECEIVING IT IS DEEMED, BY RECEIVING IT, TO AGREE THAT IT, AND/OR ANY PART OF IT, SHALL NOT BE DISCLOSED TO ANY PERSON, CORPORATION OR OTHER ENTITY, DUPLICATED, AND/OR USED, EXCEPT AS EXPRESSLY APPROVED IN WRITING IN ADVANCE BY OWNER. THIS DOCUMENT SHALL BE RETURNED TO OWNER UPON REQUEST. IT MAY BE SUBJECT TO CERTAIN RESTRICTIONS UNDER APPLICABLE EXPORT CONTROL LAWS AND REGULATIONS.		

PRIMARY DIMENSIONS ARE INCH
mm DIMENSIONS IN [BRACKETS]
ARE FOR REFERENCE ONLY

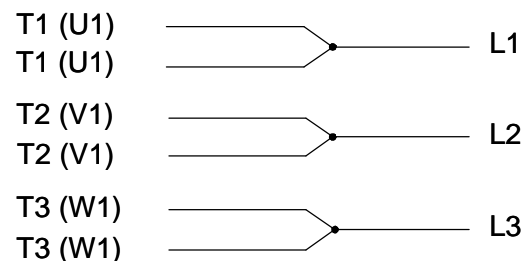
DRAWN BY BISWA	 Regal Beloit America, Inc.		
DATE 17/07/2020			
APPROVED BY SBD	DESCRIPTION		
DATE 17/07/2020	OUTLINE		
REFERENCE	5009-5011LS-B3 MTG-SD		
THIRD ANGLE PROJECTION 	MATERIAL	PROCESS/FINISH	
SIZE B	DRAWING NUMBER SS621043	SHEET 1 OF 1	

THREE PHASE - SINGLE VOLTAGE
MOTOR OR INDUCTION GENERATOR
WITH 6 RTD'S 2 PER PHASE
MARKED R1 THRU R6, AND ONE
SPACE HEATER MARKED H1 & H2.

TO REVERSE ROTATION
INTERCHANGE ANY TWO
LINE LEAD CONNECTIONS.



IF MOTOR HAS MULTIPLE
T'S PER LEAD CONNECT
TOGETHRE LIKE T'S



A-9806 DECAL

VIEW OF TERMINAL END

DRAWING REVISION C	REVISION BY SD	REV DATE/© DATE 12/13/2019	TOLERANCES (EXCEPT AS NOTED): <div><div>DEC.</div><div>INCH</div><div>mm</div><div>ANGLE</div></div> <div><div>.X</div><div>±0.1</div><div>[±3]</div><div>±7" 30"</div></div> <div><div>.XX</div><div>±0.02</div><div>[±0.5]</div></div> <div><div>.XXX</div><div>±0.005</div><div>[±0.13]</div></div> <div><div>.XXXX</div><div>±0.0005</div><div>[±0.013]</div></div> <div>REMOVE BURRS & BREAK SHARP EDGES: .003/.015 [.08/.38] X 45 °</div> <div>CORNER FILLETS: R.02 [.5]</div> <div>MACHINED SURFACES: 200/INCH 5.1/mm</div> <div>mm DIMENSIONS IN [BRACKETS] ARE FOR REFERENCE ONLY</div>				DRAWN BY RM	<div><div>REGAL®</div><div>Regal Beloit America, Inc.</div></div>			
ECO ECO-0178718	APPROVED BY GM	DATE 12/13/2019					DATE 03-27-1991	<div>DESCRIPTION</div> <div>CONNECTION DIAGRAM</div> <div>SINGLE VOLT - 3<MOD-DIAM> MOTOR</div>			
ECO DESCRIPTION							APPROVED BY ML				
LOGO UPDATED							DATE 03-27-1991				
<div>COPYRIGHT (PER REVISION DATE) REGAL BELOIT AMERICA, INC. ALL RIGHTS RESERVED. PROPRIETARY AND CONFIDENTIAL INFORMATION - THIS DOCUMENT IS THE PROPERTY OF REGAL BELOIT AMERICA, INC. ("OWNER") AND CONTAINS OWNER'S PROPRIETARY INFORMATION. ANY PERSON, CORPORATION OR OTHER FIRM RECEIVING IT IS DEEMED, BY RECEIVING IT, TO AGREE THAT IT, AND/OR ANY PART OF IT, SHALL NOT BE DISCLOSED TO ANY PERSON, CORPORATION OR OTHER ENTITY, DUPLICATED, AND/OR USED, EXCEPT AS EXPRESSLY APPROVED IN WRITING IN ADVANCE BY OWNER. THIS DOCUMENT SHALL BE RETURNED TO OWNER UPON REQUEST. IT MAY BE SUBJECT TO CERTAIN RESTRICTIONS UNDER APPLICABLE EXPORT CONTROL LAWS AND REGULATIONS.</div>							REFERENCE	MATERIAL	PROCESS/FINISH		
			THIRD ANGLE PROJECTION	SIZE A	DRAWING NUMBER EE7300CD	SHEET 1 OF 1					



P.O. BOX 8003
WAUSAU, WI 54401-8003
PH. 715-675-3311

DATA VOLTS: 460

CERTIFICATION DATA SHEET

CUSTOMER: _____
ORDER #: _____
CONN. DIAGRAM: EE7300CD
OUTLINE: SS621043
WINDING: HA33156025 NONE 1
SPEED: _____

CUSTOMER P.O. #: _____
REFERENCE MODEL #: 5011LSTFCD6577
CAT #: Y9242
CUSTOMER PART #: _____
MOUNTING: F1/F2 CAPABLE
FAN: 504205B

TYPICAL MOTOR PERFORMANCE DATA

HP	KW	SYNC RPM	FL RPM	FRAME	ENCLOSURE	TYPE	KVA CODE	DESIGN
350	261	1200	1191	5011LS	TEFC	TFC	G	B

PH	HZ	VOLTS	AMPS	START TYPE	DUTY	INSL	S.F.	AMB	ELEV.
3	60/50	460#380	397&411	LINE OR INVERTER	CONT	H	1.15	40	3300

F.L. EFF	95.8	3/4 LD EFF	96.2	1/2 LD EFF	95.9	GTD EFF		ELECT. TYPE	
F.L. PF	86.0	3/4 LD PF	84.0	1/2 LD PF	78.0	95.4		SQ CAGE INV RATED	

F.L. TORQUE	LR AMPS @ 460 V	L.R. TORQUE	B.D. TORQUE	F.L. RISE (° C)	
1,545 LB-FT	2,600	3,230 LB-FT 209%	3,300 LB-FT 214%	75	

SOUND PRESSURE	SOUND	ROTOR WK ²	MAX. LOAD WK ²	SAFE STALL TIME	STARTS/HOUR	APROX.	MOTOR
85 dBA	94 dBA	295.00 LB-FT ²	- LB-FT ²	10 SEC.	2	4750	LB.

*** SUPPLEMENTAL INFORMATION ***

DE BRACKET TYPE	ODE BRACKET TYPE	MOUNT TYPE	MOTOR ORIENTATION	SEVERE DUTY	HAZARDOUS LOCATION	DRIP COVER	SCREENS	PAINT
STANDARD	STANDARD	RIGID	HORIZONTAL	PREMIUM SEVERE DUTY	NONE	NO	NONE	BLUE - RAL 5003 (EPOXY)

BEARINGS	GREASE	SHAFT TYPE	SPECIAL DE	SPECIAL ODE	SHAFT	MATERIAL	FRAME MATERIAL
DE ODE BALL BALL 6322 6319	POLYREX EM	LS	NONE	NONE	1045 HOT ROLLED (C-204)		CAST IRON

THERMOSTATS	PROTECTORS	WDG RTD's	BRG RTD's	THERMISTORS	CONTROL	SPACE	HEATERS
NONE	NOT	TINUM TWO PER PHAS	PLATINUM DE AND ODE	NONE	FALSE	SILICONE FREE 120V	

R1 (ohms/ph)	R2 (ohms/ph)	X1 (ohms/ph)	X2 (ohms/ph)	Xm (ohms/ph)	VIBRATION (in/sec)	FLOAT
0.005	0.005	0.058	0.117	2.258	0.080	ODE

* N O T E S *		INVERTER TORQUE: CONSTANT 2:1/VARIABLE 10:1 INV. HP SPEED RANGE: NONE
		ENCODER: NONE NONE NONE NONE PPR

PREPARED BY: _____ DATE: 8/5/2022	BRAKE: NONE NONE FT-LB: NA VOLTAGE: NONE UL: V - LI,ME-INS,CONST UL REC
	HZ:

FORM: 3531 REV_4 2/27/06