

PRODUCT INFORMATION PACKET



Model No: 5011LSTFCD6528
Catalog No: Y9250
500,1800,TEFC,5011LS,3/60/460
Miscellaneous

Regal and Marathon are trademarks of Regal Rexnord Corporation or one of its affiliated companies.
©2021 Regal Rexnord Corporation, All Rights Reserved. MC017097E



Nameplate Specifications

| | | | |
|------------------------|------------|----------------------------|-----------------------------|
| Output HP | 500 Hp | Output KW | 370.0 kW |
| Frequency | 60 Hz | Voltage | 460 V |
| Current | 540.0 A | Speed | 1787 rpm |
| Service Factor | 1.15 | Phase | 3 |
| Efficiency | 96.2 % | Power Factor | 90.2 |
| Duty | Continuous | Insulation Class | H |
| Design Code | B | KVA Code | G |
| Frame | 5011LS | Enclosure | Totally Enclosed Fan Cooled |
| Thermal Protection | No | Ambient Temperature | 40 °C |
| Drive End Bearing Size | 6322 | Opp Drive End Bearing Size | 6319 |
| UL | Recognized | CSA | Y |
| CE | Y | IP Code | 55 |
| Number of Speeds | 1 | | |

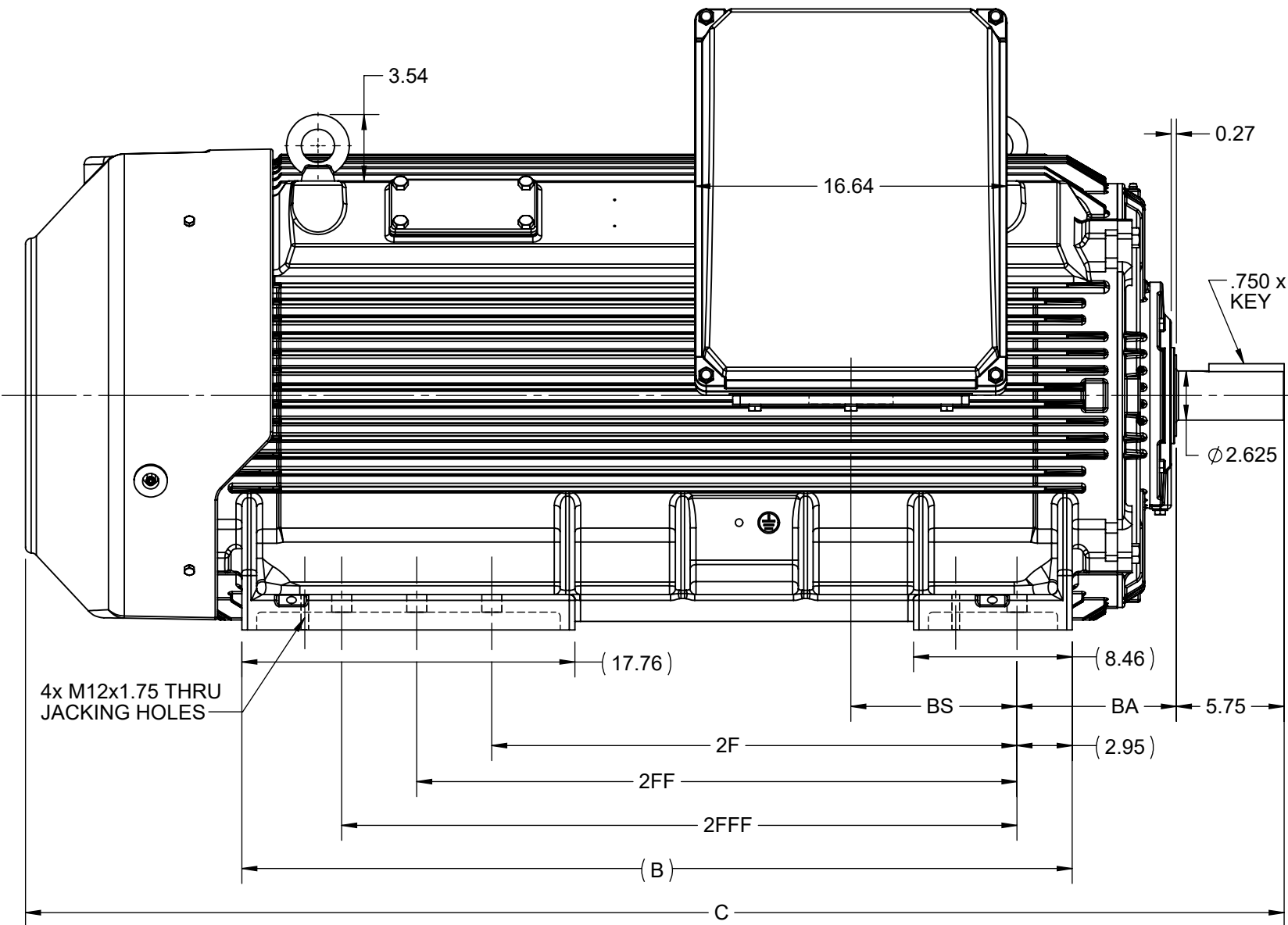
Technical Specifications

| | | | |
|-----------------------|------------------------------|-----------------------|---------------------|
| Electrical Type | Squirrel Cage Inverter Rated | Starting Method | Line Or Inverter |
| Poles | 4 | Rotation | Selective Clockwise |
| Resistance Main | .0056 Ohms | Mounting | Rigid Base |
| Motor Orientation | Horizontal | Drive End Bearing | Ball |
| Opp Drive End Bearing | Ball | Frame Material | Cast Iron |
| Shaft Type | LS | Assembly/Box Mounting | F1/F2 CAPABLE |
| Connection Drawing | EE7300CD | Outline Drawing | SS621043 |

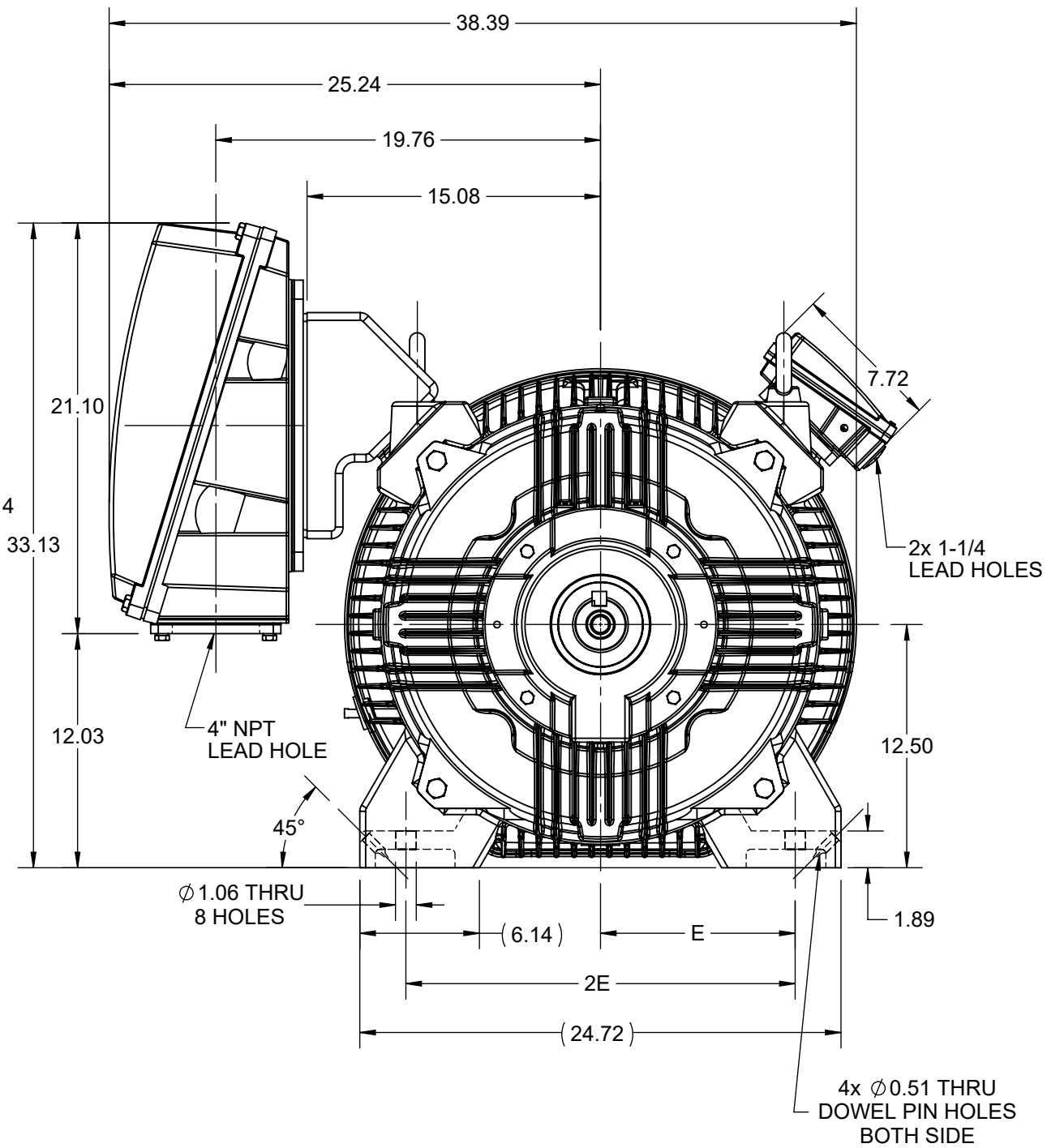
This is an uncontrolled document once printed or downloaded and is subject to change without notice. Date Created:10/11/2021

| 4 | | | | 3 | | | | 2 | | 1 |
|-------|-------|-------|-------|-------|-------|-------|------|------|----------|---|
| B | C | E | 2E | 2F | 2FF | 2FFF | BA | BS | MOUNTING | |
| 44.27 | 67.10 | 10.00 | 20.00 | 28.00 | 32.00 | 36.00 | 8.50 | 8.85 | F1/F2/F3 | |

B

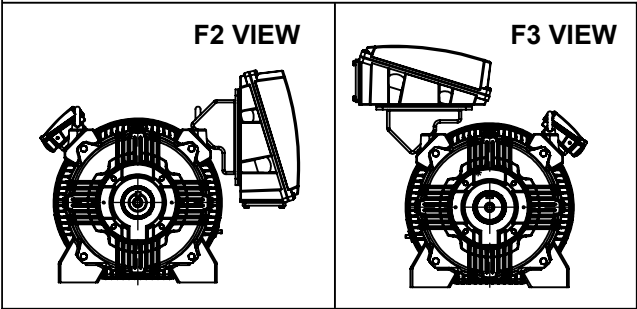


A



B

A




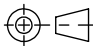
4

| | | |
|--|----------------------|-------------------------------|
| DRAWING REVISION C | REVISION BY BISWA | REV DATE/© DATE 11/01/2021 |
| ECO CR-0000524 | APPROVED BY SBD | DATE 11/01/2021 |
| ECO DESCRIPTION | | |
| DRAWING UPDATED | | |
| COPYRIGHT (PER REVISION DATE) REGAL BELOIT AMERICA, INC. ALL RIGHTS RESERVED. PROPRIETARY AND CONFIDENTIAL INFORMATION - THIS DOCUMENT IS THE PROPERTY OF REGAL BELOIT AMERICA, INC. ("OWNER") AND CONTAINS OWNER'S PROPRIETARY INFORMATION. ANY PERSON, CORPORATION OR OTHER FIRM RECEIVING IT IS DEEMED, BY RECEIVING IT, TO AGREE THAT IT, AND/OR ANY PART OF IT, SHALL NOT BE DISCLOSED TO ANY PERSON, CORPORATION OR OTHER ENTITY, DUPLICATED, AND/OR USED, EXCEPT AS EXPRESSLY APPROVED IN WRITING IN ADVANCE BY OWNER. THIS DOCUMENT SHALL BE RETURNED TO OWNER UPON REQUEST. IT MAY BE SUBJECT TO CERTAIN RESTRICTIONS UNDER APPLICABLE EXPORT CONTROL LAWS AND REGULATIONS. | | |

3

PRIMARY DIMENSIONS ARE INCH
mm DIMENSIONS IN [BRACKETS]
ARE FOR REFERENCE ONLY

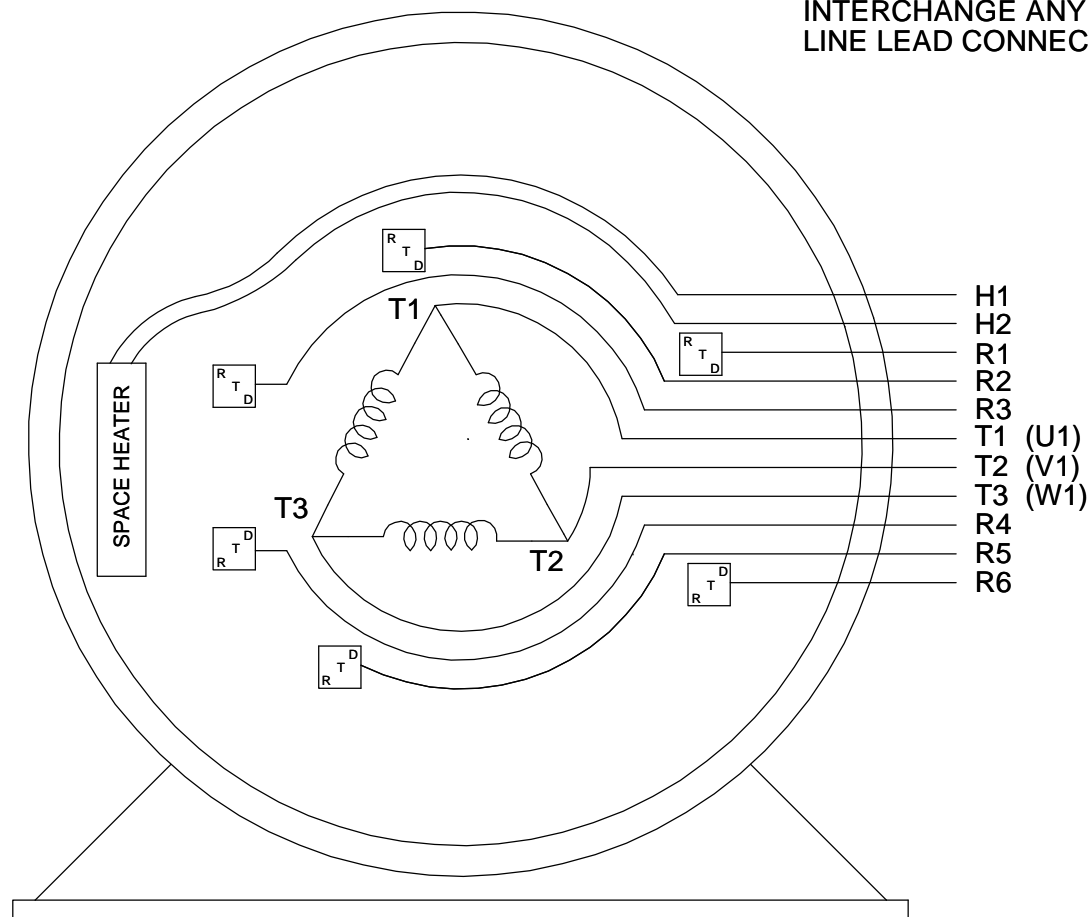
2

| | | | |
|---|--|----------------------------|-----------------|
| DRAWN BY BISWA |  Regal Beloit America, Inc. | | |
| DATE 17/07/2020 | | | |
| APPROVED BY SBD | DESCRIPTION | | |
| DATE 17/07/2020 | OUTLINE | | |
| REFERENCE | 5009-5011LS-B3 MTG-SD | | |
| THIRD ANGLE PROJECTION  | MATERIAL | PROCESS/FINISH | |
| | SIZE B | DRAWING NUMBER SS621043 | SHEET 1 OF 1 |

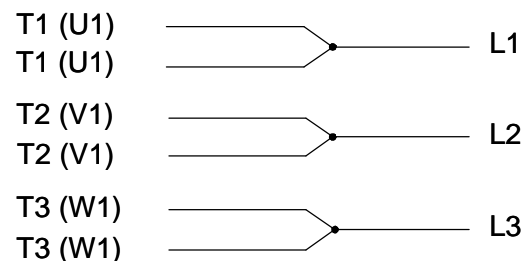
1

THREE PHASE - SINGLE VOLTAGE
MOTOR OR INDUCTION GENERATOR
WITH 6 RTD'S 2 PER PHASE
MARKED R1 THRU R6, AND ONE
SPACE HEATER MARKED H1 & H2.

TO REVERSE ROTATION
INTERCHANGE ANY TWO
LINE LEAD CONNECTIONS.




IF MOTOR HAS MULTIPLE
T'S PER LEAD CONNECT
TOGETHRE LIKE T'S



A-9806 DECAL

VIEW OF TERMINAL END

| | | | | | | | | | | | | |
|---|-------------------|-------------------------------|--|---------|-----------|---------|--|---|-----------|----------------------------|--|-----------------|
| DRAWING REVISION C | REVISION BY SD | REV DATE/© DATE 12/13/2019 | TOLERANCES (EXCEPT AS NOTED): | | | | DRAWN BY RM | <div> Regal Beloit America, Inc.</div> | | | | |
| ECO ECO-0178718 | APPROVED BY GM | DATE 12/13/2019 | DEC. | INCH | mm | ANGLE | DATE 03-27-1991 | | | | | |
| ECO DESCRIPTION | | | .X | ±0.1 | [±3] | ±7' 30" | APPROVED BY ML | DESCRIPTION <div>CONNECTION DIAGRAM</div> <div>SINGLE VOLT - 3<MOD-DIAM> MOTOR</div> | | | | |
| LOGO UPDATED | | | .XX | ±0.02 | [±0.5] | | DATE 03-27-1991 | | | | | |
| <div>COPYRIGHT (PER REVISION DATE) REGAL BELOIT AMERICA, INC. ALL RIGHTS RESERVED. PROPRIETARY AND CONFIDENTIAL INFORMATION - THIS DOCUMENT IS THE PROPERTY OF REGAL BELOIT AMERICA, INC. ("OWNER") AND CONTAINS OWNER'S PROPRIETARY INFORMATION. ANY PERSON, CORPORATION OR OTHER FIRM RECEIVING IT IS DEEMED, BY RECEIVING IT, TO AGREE THAT IT, AND/OR ANY PART OF IT, SHALL NOT BE DISCLOSED TO ANY PERSON, CORPORATION OR OTHER ENTITY, DUPLICATED, AND/OR USED, EXCEPT AS EXPRESSLY APPROVED IN WRITING IN ADVANCE BY OWNER. THIS DOCUMENT SHALL BE RETURNED TO OWNER UPON REQUEST. IT MAY BE SUBJECT TO CERTAIN RESTRICTIONS UNDER APPLICABLE EXPORT CONTROL LAWS AND REGULATIONS.</div> | | | .XXX | ±0.005 | [±0.13] | | REFERENCE | MATERIAL | | PROCESS/FINISH | | |
| | | | .XXXX | ±0.0005 | [±0.013] | | THIRD ANGLE PROJECTION | | SIZE A | DRAWING NUMBER EE7300CD | | SHEET 1 OF 1 |
| | | | REMOVE BURRS & BREAK SHARP EDGES: .003/.015 [.08/.38] X 45 ° | | | | <div>5.1</div> <div>INCH</div> <div>mm</div> | | | | | |
| | | | CORNER FILLETS: R.02 [.5] | | | | | | | | | |
| | | | MACHINED SURFACES: 200 | | | | | | | | | |
| | | | mm DIMENSIONS IN [BRACKETS] ARE FOR REFERENCE ONLY | | | | | | | | | |