

PRODUCT INFORMATION PACKET

marathon[®]
Motors

Model No: 5009LTTS16531
Catalog No: 5009LTTS16531
350,1800,TEAO,5009LCZ,3/60/460

Regal and Marathon are trademarks of Regal Rexnord Corporation or one of its affiliated companies.
©2023 Regal Rexnord Corporation, All Rights Reserved. MC017097E

RegalRexnord

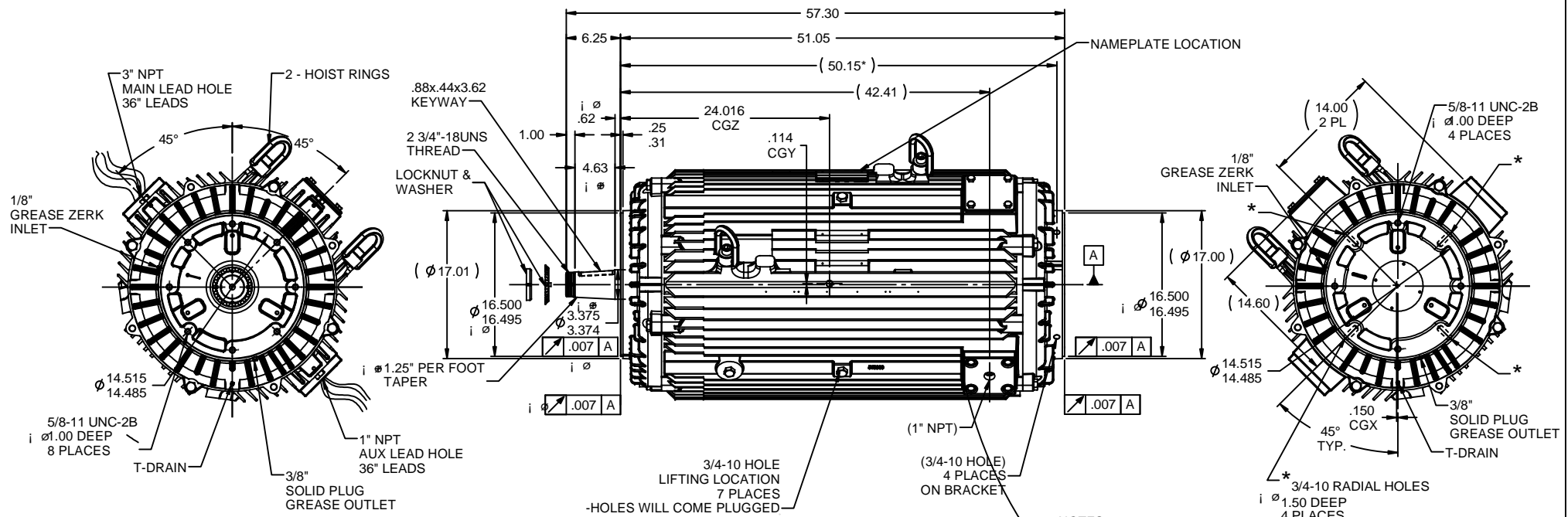
Nameplate Specifications

Phase	3	Output HP	350 Hp
Output KW	260.0 kW	Voltage	460 V
Speed	1788 rpm	Service Factor	1.15
Frame	5009LCZ	Enclosure	Totally Enclosed Air Over
Thermal Protection	No Protection	Efficiency	96.5 %
Ambient Temperature	40 °C	Frequency	60 Hz
Current	385.0 A	Power Factor	88
Duty	Continuous	Insulation Class	F
Design Code	B	KVA Code	G
Drive End Bearing Size	6324	Opp Drive End Bearing Size	6318
UL	No	CSA	Y
CE	Y	IP Code	54
Number of Speeds	1		

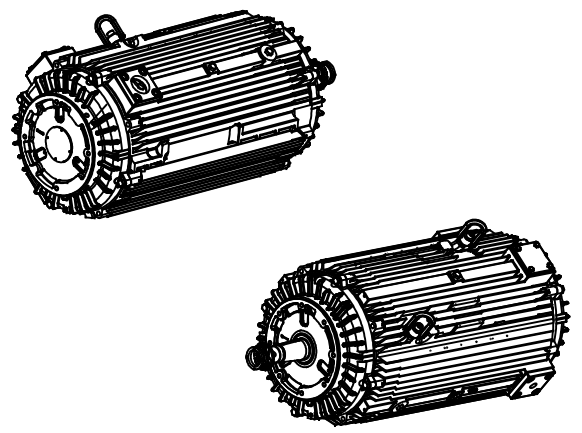
Technical Specifications

Electrical Type	Squirrel Cage Inverter Rated	Starting Method	Line Or Inverter
Poles	4	Rotation	Reversible
Resistance Main	.0075 Ohms	Mounting	Round
Motor Orientation	Horizontal	Drive End Bearing	Ball
Opp Drive End Bearing	Ball	Frame Material	Cast Iron
Shaft Type	Single Special Extension	Assembly/Box Mounting	F1/F2 CAPABLE
Outline Drawing	B-SS553944-4150	Connection Drawing	A-EE7300EH

This is an uncontrolled document once printed or downloaded and is subject to change without notice. Date Created:08/24/2023



- NOTES:
- BALANCING - .08 IN/SEC
 - WINDING RTD'S - (6) 100 OHM PLATINUM
 - BEARING RTD'S - (2) 100 OHM PLATINUM
 - SPACE HEATER - 115V/144W
 - NAMEPLATES - (1) ON THE MOTOR & (1) SHIPPED LOOSE
 - MOTOR INFO -
350 HP - XRI HIGH EFF. - INSUL CLASS F
60 HZ - 460V - 3 PH - 1800 RPM
1.15 S.F. - PWM VFD 10:1 VT 1.0 S.F.
 - MOTOR PAINT - BLUE EPOXY
 - BEARINGS - 6324 BEARING W/ SHAFT GROUND RING DRIVE END
- 6318 INSULATED BEARING OPPOSITE DRIVE END
 - C'BOX ASSEMBLY SHIPPED LOOSE FOR REMOTE MTG.
 - SHAFT GROUNDING RING ON DRIVE END
 - 2 HOIST RINGS PROVIDED
 - ESTIMATED MOTOR WEIGHT: (3905 LBS.)

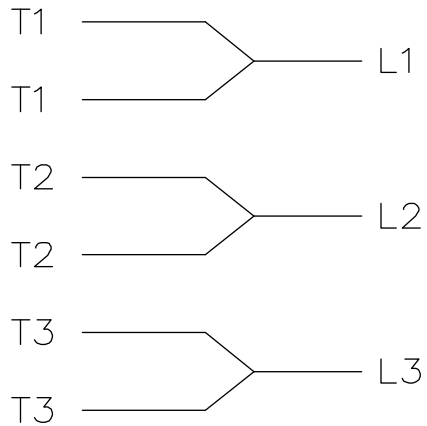


+ DOCUMENTED AT SHAFT INSPECTION

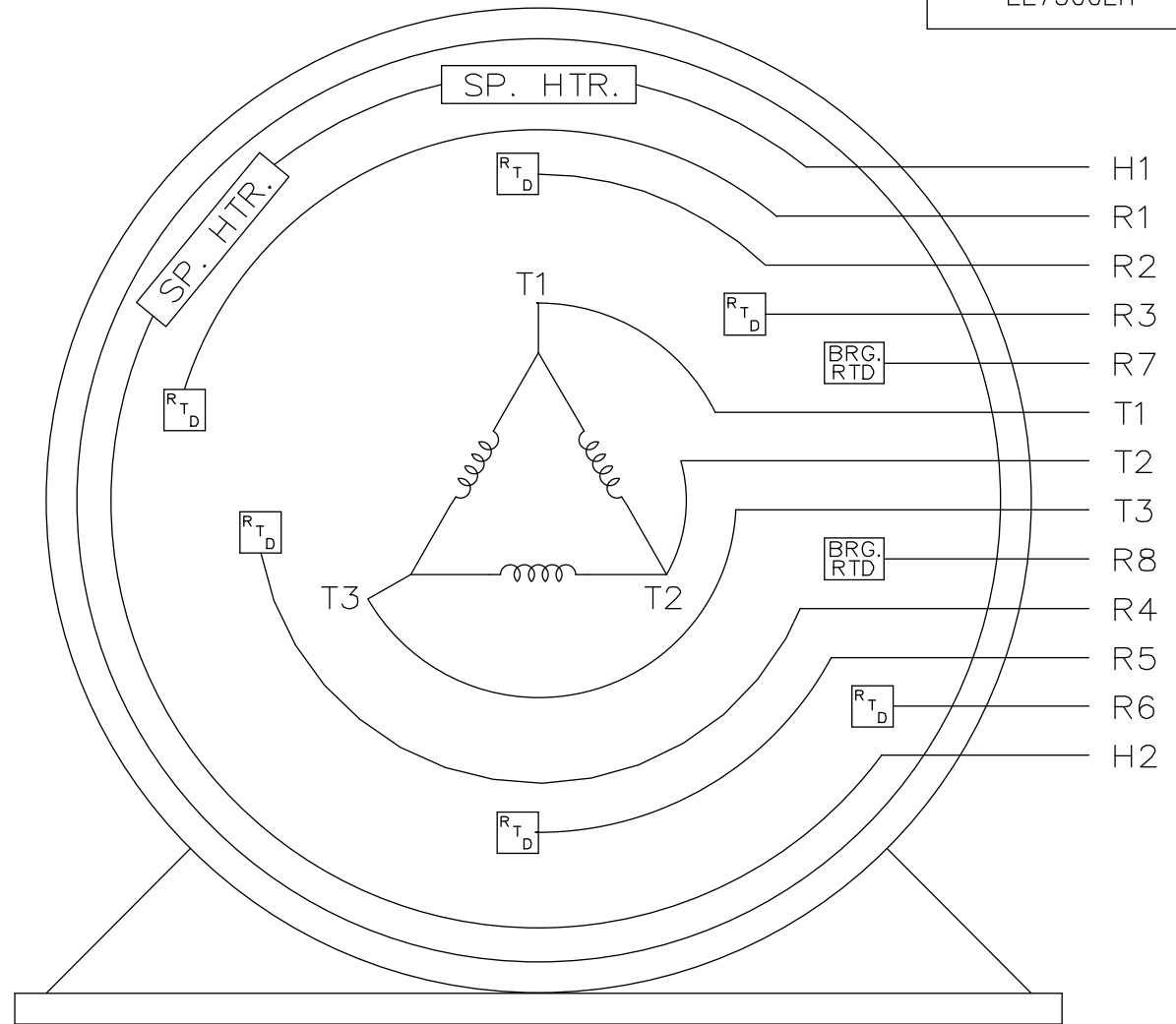
		TOLERANCES UNLESS SPECIFIED			DRAWN	JJB 04-08-2010
		DEC	INCHES		CHK	MH 04-09-2010
		x	±.1	APPR		MJS 04-09-2010
		xx	±.03	TITLE		OUTLINE - SPL O.D.E. RADIAL HOLES
		xxx	±.005	REF		5009LCZ FR. - TEAO - DBL. C'FACE
		xxxx	±.0005	MATL		SCALE 1:11
		NO	REVISION	BY & DATE	FINISH	REF
				CHK ANG ±7'30"		FMF MU94995
			THIRD ANGLE PROJECTION	RFP 04-09-2010	PREV	PAGE OF
				NETWORK FILE NAME SS553944	SIZE B	DRAWING NO SS553944
						REV

THREE PHASE – SINGLE VOLTAGE
MOTOR OR INDUCTION GENERATOR
WITH 6 STATOR RTD'S MARKED R1
THRU R6, 2 BRG. RTD'S MARKED
R7 AND R8, AND 2 HEATER LEADS
MARKED H1 AND H2.

IF MOTOR OR GEN.
HAS 6 LEADS



A-9806 DECAL



VIEW OF TERMINAL END

NOTE:
WHEN MORE THAN ONE HEATER IS USED,
HEATERS MUST BE CONNECTED IN SERIES.

				TOLERANCES UNLESS SPECIFIED			DRAWN MRB 07-22-1995				
				DEC.	INCHES		CHK				
				.X	±.1		APPD				
				.XX	±.02		SCALE 1=1				
				.XXX	±.005		REF				
1	NEW DRAWING	4303764	MRB 07-22-1995	.XXXX	±.0005	MAT'L.	FMF				
NO.	REVISION	BY & DATE	CHK	ANG	±7'30"	FINISH	PREV				
THIS DRAWING IN DESIGN AND DETAIL IS OUR PROPERTY AND MUST NOT BE USED EXCEPT IN CONNECTION WITH OUR WORK ALL RIGHTS OF DESIGN AND INVENTION ARE RESERVED THIS IS AN ELECTRONICALLY GENERATED DOCUMENT – DO NOT SCALE THIS PRINT				RFP	CAD FILE EE7300EH		SIZE	DRAWING NO.	PAGE	OF	REV.
				DIST LB-WP			A	EE7300EH			1