

PRODUCT INFORMATION PACKET

marathon®
Motors

Model No: 5008SVDSL16003

Catalog No: Y9100

Endurance Series® MODEL-IHP, 350HP,2P,ODP,5008S,3/60/2300/4000-4160,CW/DE,120VSH,WRTD-SH,BRTD PROV



Regal and Marathon are trademarks of Regal Rexnord Corporation or one of its affiliated companies.

©2023 Regal Rexnord Corporation, All Rights Reserved. MC017097E

RegalRexnord

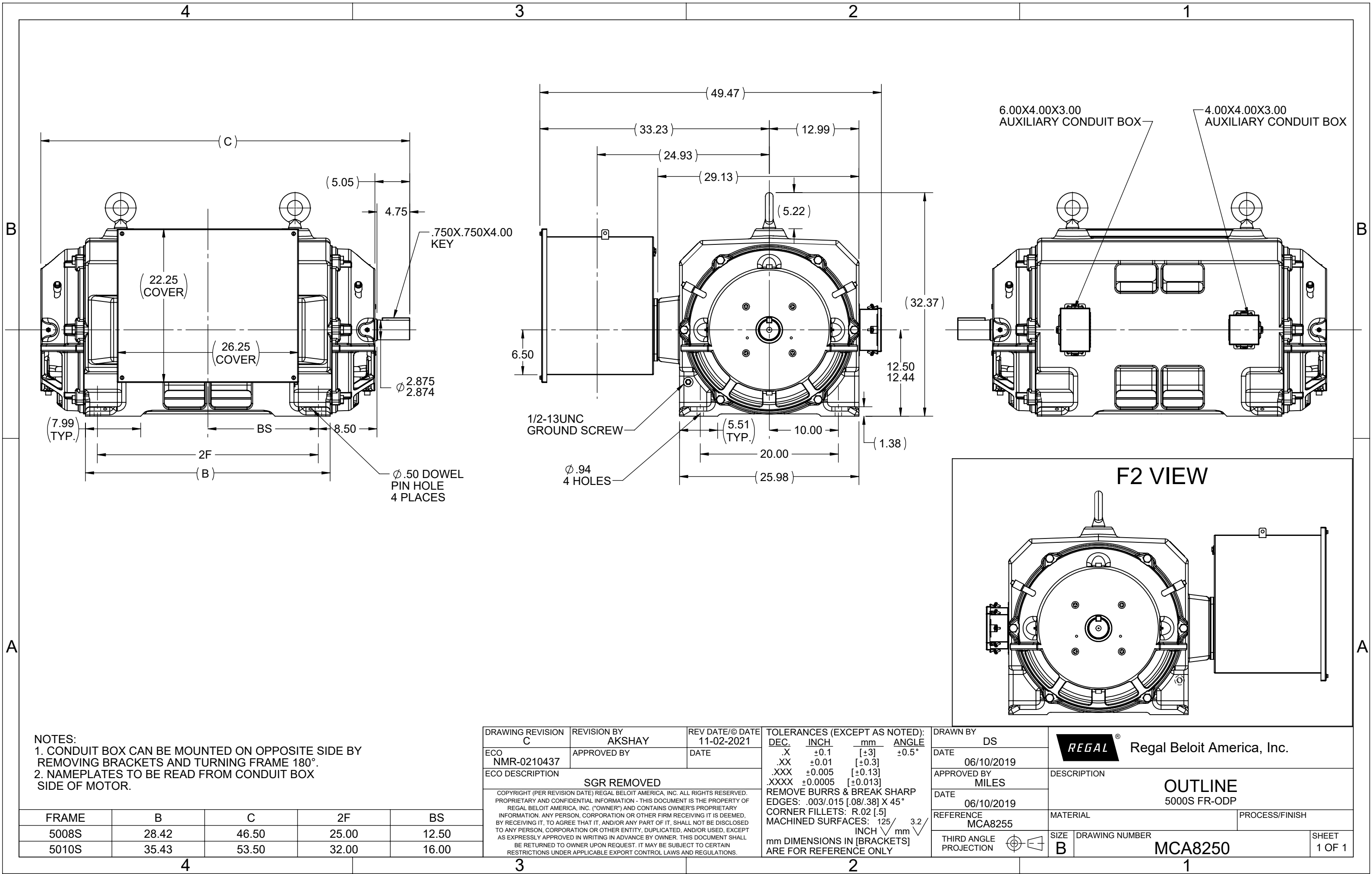
Nameplate Specifications

Output HP	350 Hp	Output KW	260.0 kW
Frequency	60 Hz	Voltage	2300/4000-4160 V
Current	76.0/44.0-42.0 A	Speed	3575 rpm
Service Factor	1.15	Phase	3
Efficiency	94.5 %	Power Factor	91
Duty	Continuous	Insulation Class	F
Design Code	B	KVA Code	F
Frame	5008S	Enclosure	Drip Proof
Thermal Protection	No Protection	Ambient Temperature	40 °C
Drive End Bearing Size	6316	Opp Drive End Bearing Size	6316
UL	Recognized	CSA	Y
CE	N	IP Code	23
Number of Speeds	1		

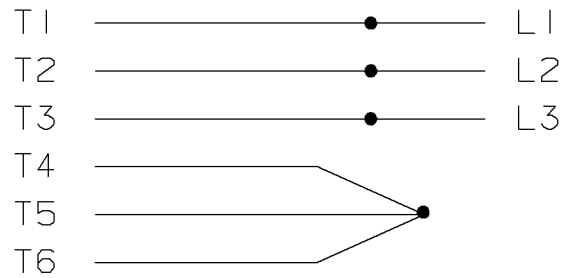
Technical Specifications

Electrical Type	Squirrel Cage Induction Run	Starting Method	Across The Line
Poles	2	Rotation	Reversible
Mounting	Rigid Base	Motor Orientation	Horizontal
Drive End Bearing	Ball	Opp Drive End Bearing	Ball
Frame Material	Cast Iron	Shaft Type	S
Shaft Diameter	2.875 in	Assembly/Box Mounting	F1/F2 CAPABLE
Connection Drawing	EE7304AC	Outline Drawing	MCA8250

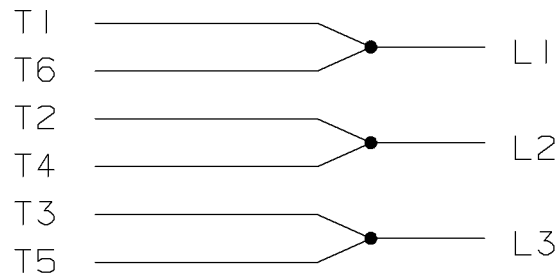
This is an uncontrolled document once printed or downloaded and is subject to change without notice. Date Created:03/13/2023



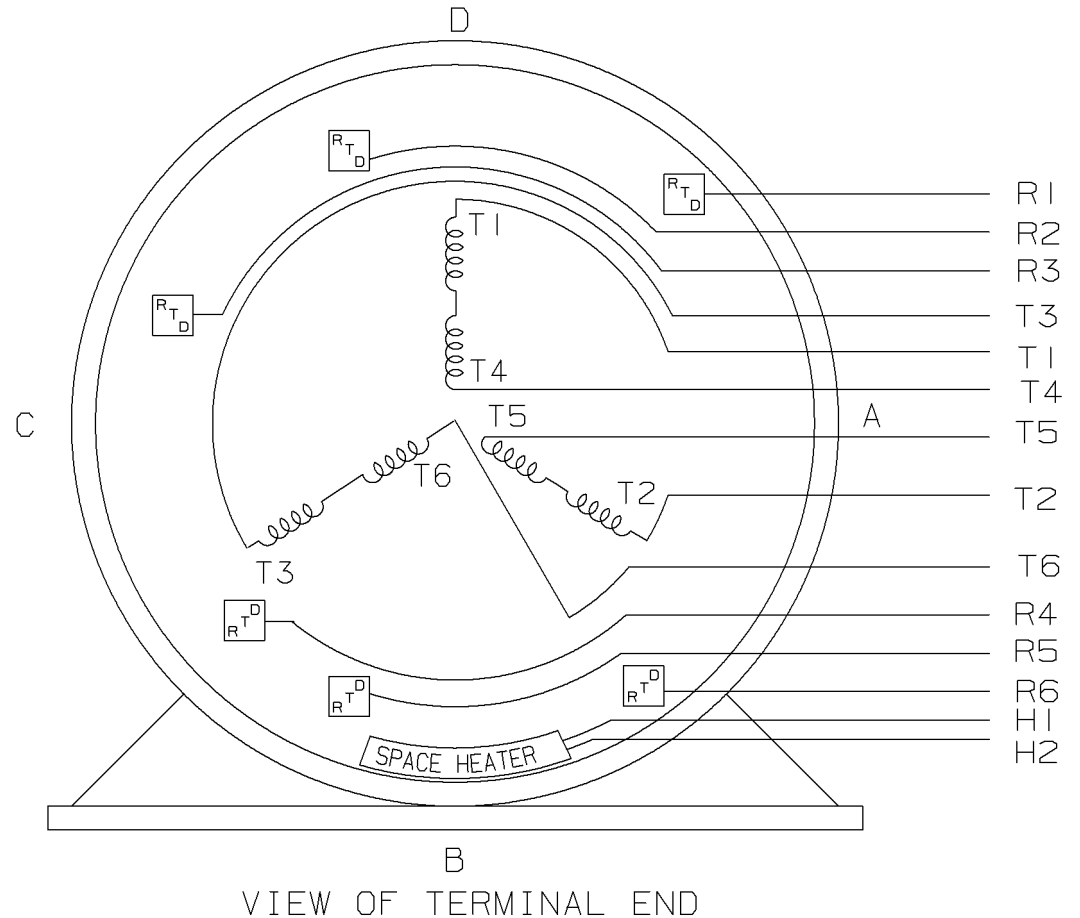
HIGH VOLTAGE "Y" CONNECTION



LOW VOLTAGE - DELTA



THREE PHASE - DUAL VOLTAGE WITH 6 RTD'S 2 PER PHASE AND SPACE HEATER



			✓ MAX. SURFACE ROUGHNESS UNLESS NOTED OTHERWISE		UNLESS OTHERWISE SPECIFIED DIMENSIONS ARE IN INCHES TOL. ON XX± XXX±.005 XXXX±.0005 ANGLES±		
			MATL SPEC		DRAWN BY CAE 05-07-1999		
			FINISH		CHKD BY		
I			NEW DRAWING		APPD BY		
REV			DATE		DRWG NO		
			CHANGE		A- EE7304AC		
			NAME		PART NAME CONNECTION DIAGRAM - THREE PHASE DUAL VOLTAGE 6 RTD'S & SPACE HEATER		
					DISTRIBUTION - WA - LB - WP - LM		
					CADD FILE NO. EE7304AC		

SHOP BOOK

PURCHASED

DISTRIBUTION - WA - LB - WP - LM

CADD FILE NO.

EE7304AC

```
ERROR: syntaxerror  
OFFENDING COMMAND: --nostringval--
```

```
STACK:
```

```
-dictionary-  
-dictionary-  
/Pscript_WinNT_Compat  
-dictionary-
```