

PRODUCT INFORMATION PACKET



Model No: 5011LHFS16049
Catalog No: 5011LHFS16049
500,1800,TEBC-RADIAL,5011L,3/60/460

Regal and Marathon are trademarks of Regal Rexnord Corporation or one of its affiliated companies.
©2024 Regal Rexnord Corporation, All Rights Reserved. MC017097E



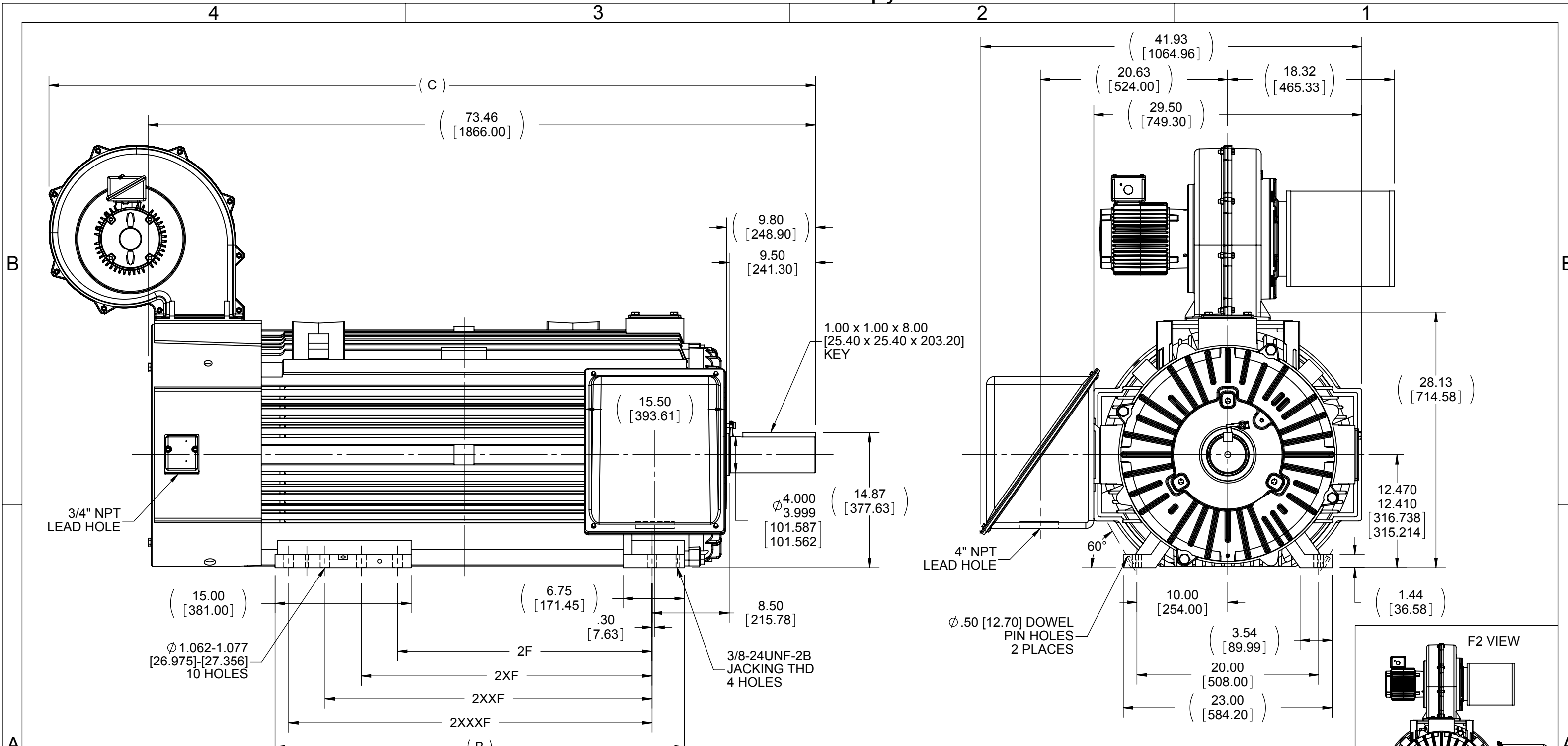
Nameplate Specifications

Phase	3	Output HP	500 Hp
Output KW	370.0 kW	Voltage	460 V
Speed	1788 rpm	Service Factor	1
Frame	5011L	Enclosure	TEBC-RADIAL
Thermal Protection	Thermostat	Efficiency	96.2 %
Ambient Temperature	40 °C	Frequency	60 Hz
Current	555.0 A	Power Factor	88
Duty	Continuous	Insulation Class	F
Design Code	INV	KVA Code	G
Drive End Bearing Size	6324	Opp Drive End Bearing Size	6318
UL	No	CSA	Y
CE	Y	IP Code	43
Number of Speeds	1		

Technical Specifications

Electrical Type	Squirrel Cage Inverter Duty	Starting Method	Inverter Only
Poles	4	Rotation	Reversible
Resistance Main	.004 Ohms	Mounting	Rigid Base
Motor Orientation	Horizontal	Drive End Bearing	Ball
Opp Drive End Bearing	Ball	Frame Material	Cast Iron
Shaft Type	L	Assembly/Box Mounting	F1/F2 CAPABLE
Outline Drawing	SS556115-4950	Connection Drawing	EE7300S

This is an uncontrolled document once printed or downloaded and is subject to change without notice. Date Created:10/01/2024



- NOTES:
 1. CONDUIT BOX CAN BE ROTATED IN 90° STEPS.
 2. NAMEPLATE TO BE READ FROM CONDUIT BOX SIDE OF MOTOR.
 3. MOTOR WEIGHT (MAXIMUM) = LBS

DASH	FRAME	B	C	2F	2XF	2XXF	2XXXF
4950	5009L	45.05 [1144.27]	84.38 [2143.25]	28.00 [711.20]	---	---	---
4950	5010L	45.05 [1144.27]	84.38 [2143.25]	---	32.00 [812.80]	---	---
4950	5011L	45.05 [1144.27]	84.38 [2143.25]	---	---	36.00 [914.40]	---
4950	5012L	45.05 [1144.27]	84.38 [2143.25]	---	---	---	40.00 [1016.00]

DRAWING REVISION A
 ECO ECO-0045922
 ECO DESCRIPTION
 COPYRIGHT REGAL BELOIT AMERICA, INC. ALL RIGHTS RESERVED. PROPRIETARY AND CONFIDENTIAL INFORMATION - THIS DOCUMENT IS THE PROPERTY OF REGAL BELOIT AMERICA, INC. ("OWNER") AND CONTAINS OWNER'S PROPRIETARY INFORMATION. ANY PERSON, CORPORATION OR OTHER FIRM RECEIVING IT IS DEEMED, BY RECEIVING IT, TO AGREE THAT IT, AND/OR ANY PART OF IT, SHALL NOT BE DISCLOSED TO ANY PERSON, CORPORATION OR OTHER ENTITY, DUPLICATED, AND/OR USED, EXCEPT AS EXPRESSLY APPROVED IN WRITING IN ADVANCE BY OWNER. THIS DOCUMENT SHALL BE RETURNED TO OWNER UPON REQUEST. IT MAY BE SUBJECT TO CERTAIN RESTRICTIONS UNDER APPLICABLE EXPORT CONTROL LAWS AND REGULATIONS.

TOLERANCES UNLESS OTHERWISE SPECIFIED:
 DEC. INCH mm ANGLE
 .X ±0.1 [±2.5] ±7° 30"
 .XX ±0.03 [±0.76]
 .XXX ±0.005 [±0.127]
 .XXXX ±0.0005 [±0.0127]
 REMOVE BURRS & BREAK SHARP
 EDGES: .003/.015 [0.076/.381]
 CORNER FILLETS: .02 [0.51]
 MACHINED SURFACES: 200 INCH 5.1 mm
 mm SHOWN IN [BRACKETS]

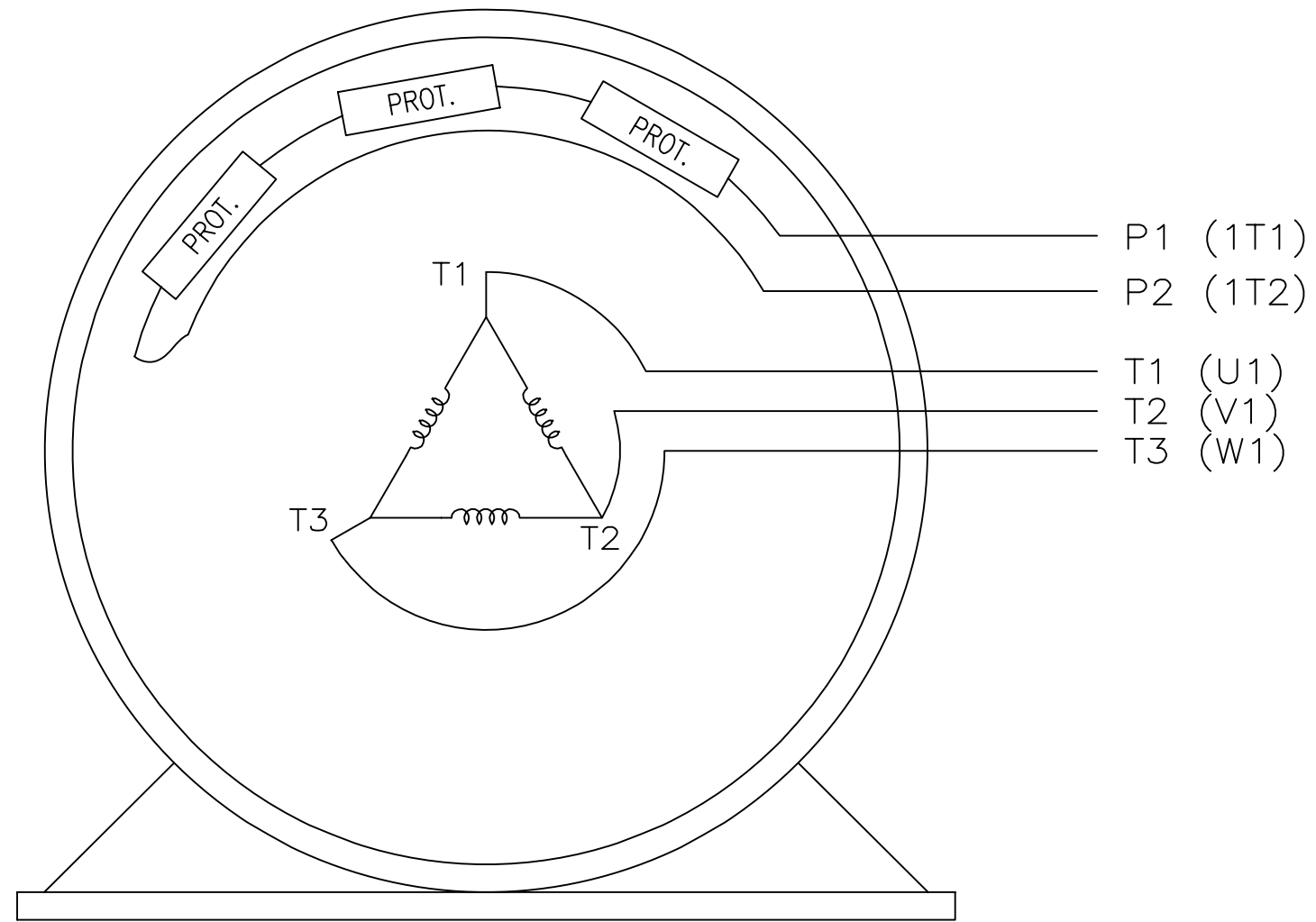
DRAWN BY RFH
 DATE 03/26/2014
 APPROVED BY EH
 DATE 03/26/2014
 PROCESS/FINISH
 THIRD ANGLE PROJECTION

REGAL™ Regal Beloit America, Inc.
 DESCRIPTION
5009-5012L FR.-TEFC-F1/F2/F3 MT.
 MATERIAL
 SIZE B DRAWING NUMBER **SS556115** SHEET 1 OF 1

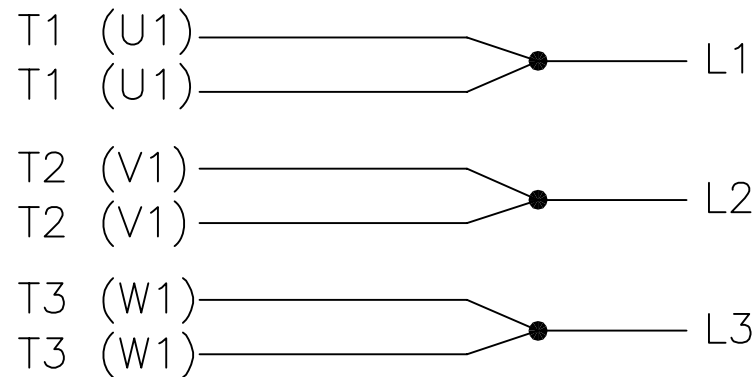
EE7300S

THREE PHASE – SINGLE VOLTAGE MOTOR

TO REVERSE ROTATION:
INTERCHANGE ANY TWO LINE
LEAD CONNECTIONS



IF MOTOR HAS MULTIPLE
T'S PER LEAD CONNECT
TOGETHER LIKE T'S



A-9806 DECAL

VIEW OF TERMINAL END

NO.	REVISION	BY & DATE	CHK	TOLERANCES UNLESS SPECIFIED			REGAL-BELOIT CORPORATION	DRAWN KL 12-15-1999
				DEC.	INCHES			
F	UPDATED TITLE BLOCK	HV 02-27-2014	EWB	.X	±	-	REGAL-BELOIT CORPORATION	CHK DJK 12-15-1999
3	REMOVED "N.C." FROM PROT.'S MU61770	JJB 08-02-2010		.XX	±	-	TITLE CONNECTION DIAGRAM – EXTERNAL SINGLE VOLTAGE 3Ø MOTOR	APPD DJK 12-15-1999
2	ADDED IEC MARKINGS MU61770	KL 09-16-2004	EAB	.XXX	±	-		SCALE 1=1
1	NEW DRAWING	KL 12-16-1999		.XXXX	±	-	MAT'L.	REF
				ANG	±	-	FINISH	FMF
			RFP				CAD FILE ee7300s	PREV
			DIST WA-LB-SB				SIZE A	DRAWING NO. EE7300S
								PAGE OF REV. F

THIS DRAWING IN DESIGN AND DETAIL IS OUR PROPERTY AND MUST NOT BE USED EXCEPT IN CONNECTION WITH OUR WORK ALL RIGHTS OF DESIGN AND INVENTION ARE RESERVED THIS IS AN ELECTRONICALLY GENERATED DOCUMENT – DO NOT SCALE THIS PRINT

Data Sheet

Date: 8/21/2024
 Customer: _____
 Attention: _____
 Submitted by: VESHNU G



5011LHFS16049

Submittal

Data @ 460 V

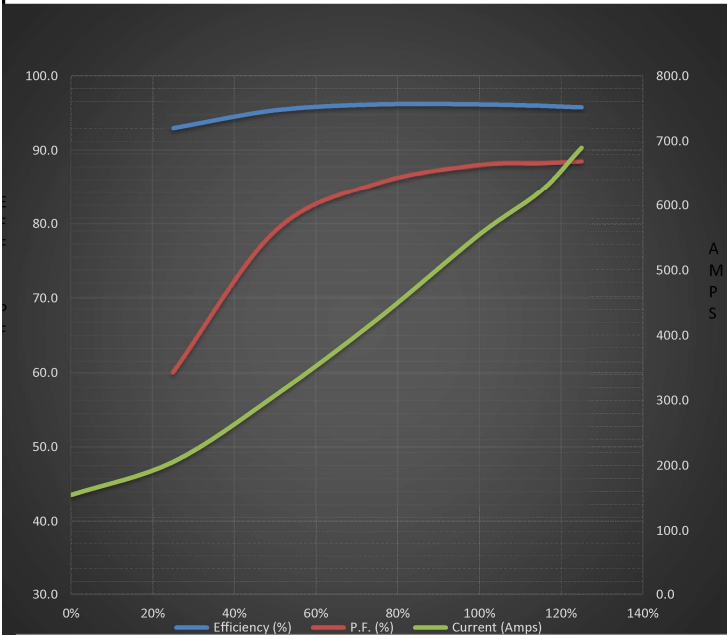
Motor Load Data

Load	0%	25%	50%	75%	100%	115%	125%	LR
Current (Amps)	155	206	308	425	555	623	690	3,625
Torque (ft-lb)	-	366	732	1,100	1,469	1,655	1,840	2,650
RPM	1800	1796	1794	1790	1788	1,786	1782	0
Efficiency (%)		93.0	95.4	96.2	96.2	96.0	95.8	
P.F. (%)	4.0	60.0	79.0	85.5	88.0	88.3	88.5	26.0

Motor Speed Data

	LR	Pull-Up	BD	Rated	Idle
Speed (RPM)	0	900	1725	1788	1800
Current (Amps)	3,625	3,300	2,250	555	155
Torque (ft-lb)	2,650	2,300	4,100	1,469	0.00

Information Block				
HP	500.0			
Sync. RPM	1800			
Frame	5011			
Enclosure	TEBC-RADIAL			
Construction	TFS			
Voltage	460 V			
Frequency	60 Hz			
Design	INV			
LR Code letter	G			
Service Factor	1			
Temp Rise @ FL	75 ° C			
Duty	CONT			
Ambient	40 ° C			
Elevation	3,300 feet			
Rotor/Shaft wk ²	220 Lb-Ft ²			
Ref Wdg	T511428 R2			
Sound Pressure @ 1M	80 dBA			
VFD Rating	CONSTANT 2000:1			
Outline Dwg	SS556115-4950			
Conn. Diag	EE7300S			
Additional Specifications:				
0				
0				
EQUIV CKT (OHMS / PHASE)				
R1	R2	X1	X2	Xm
0.0040	0.0030	0.0350	0.0700	1.6920



Speed - Torque Curve

