

# PRODUCT INFORMATION PACKET

**marathon®**  
Motors

Model No: 449TTFS6087

Catalog No: E283

250 HP, General Purpose Motors, 3 phase, 1200 RPM, 460 V, 449T Frame, TEFC  
General Purpose Motors



Regal and Marathon are trademarks of Regal Rexnord Corporation or one of its affiliated companies.  
©2021 Regal Rexnord Corporation, All Rights Reserved. MC017097E

**RegalRexnord**

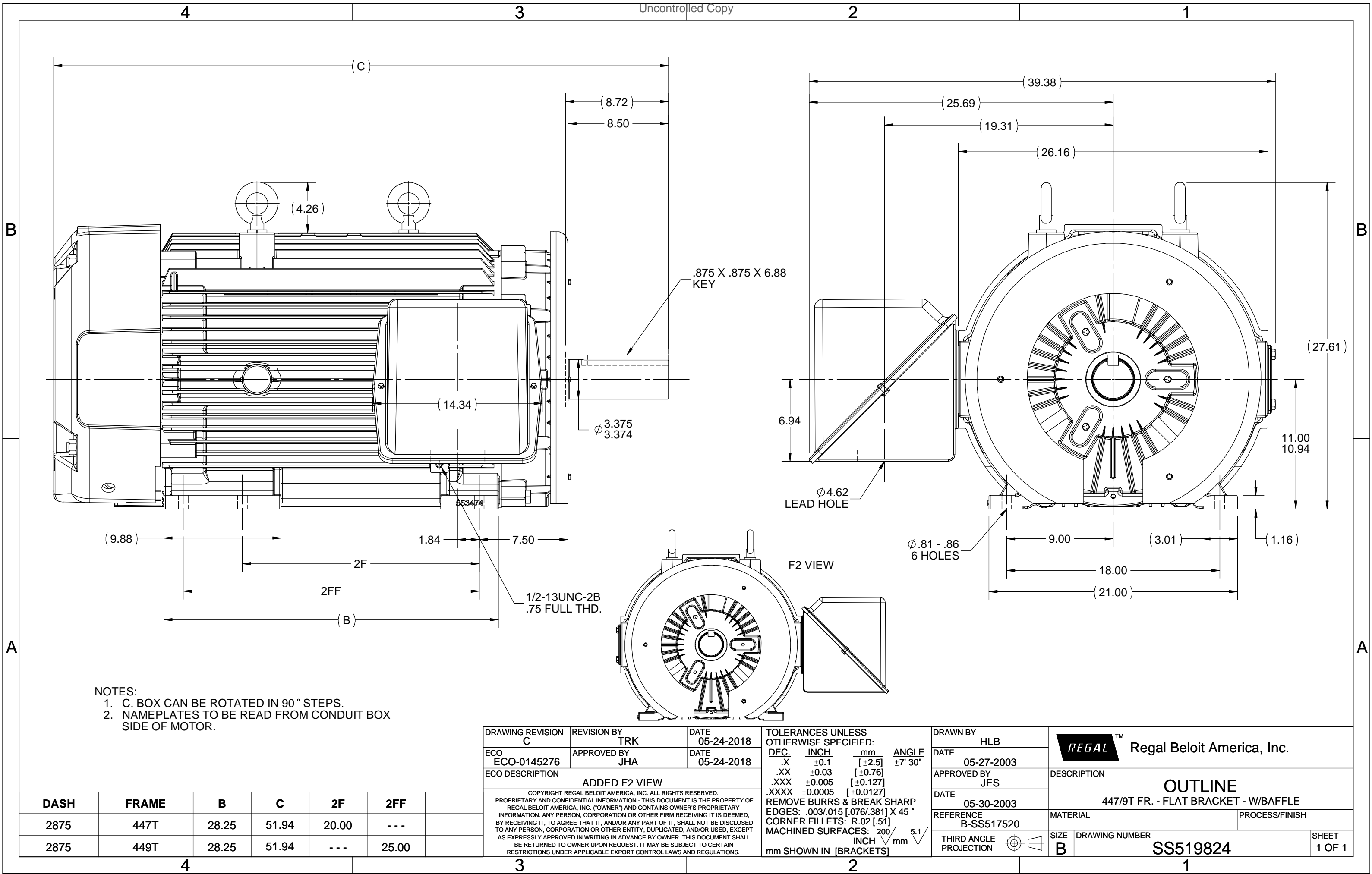
**Nameplate Specifications**

Output HP	250 Hp	Output KW	187.0 kW
Frequency	60 Hz	Voltage	460 V
Current	300.0 A	Speed	1190 rpm
Service Factor	1.15	Phase	3
Efficiency	95.8 %	Power Factor	81
Duty	Continuous	Insulation Class	H
Design Code	B	KVA Code	G
Frame	449T	Enclosure	Totally Enclosed Fan Cooled
Thermal Protection	No	Ambient Temperature	40 °C
Drive End Bearing Size	NU322	Opp Drive End Bearing Size	6318
UL	Recognized	CSA	Y
CE	Y	IP Code	43
Number of Speeds	1		

**Technical Specifications**

Electrical Type	Squirrel Cage Induction Run	Starting Method	Across The Line
Poles	6	Rotation	Reversible
Resistance Main	.012 Ohms	Mounting	Rigid Base
Motor Orientation	Horizontal	Drive End Bearing	Roller
Opp Drive End Bearing	Ball	Frame Material	Cast Iron
Shaft Type	T	Overall Length	51.85 in
Frame Length	28.75 in	Shaft Diameter	3.375 in
Shaft Extension	8.73 in	Assembly/Box Mounting	F1/F2 CAPABLE
Outline Drawing	B-SS519824-2875	Connection Drawing	A-EE7300S

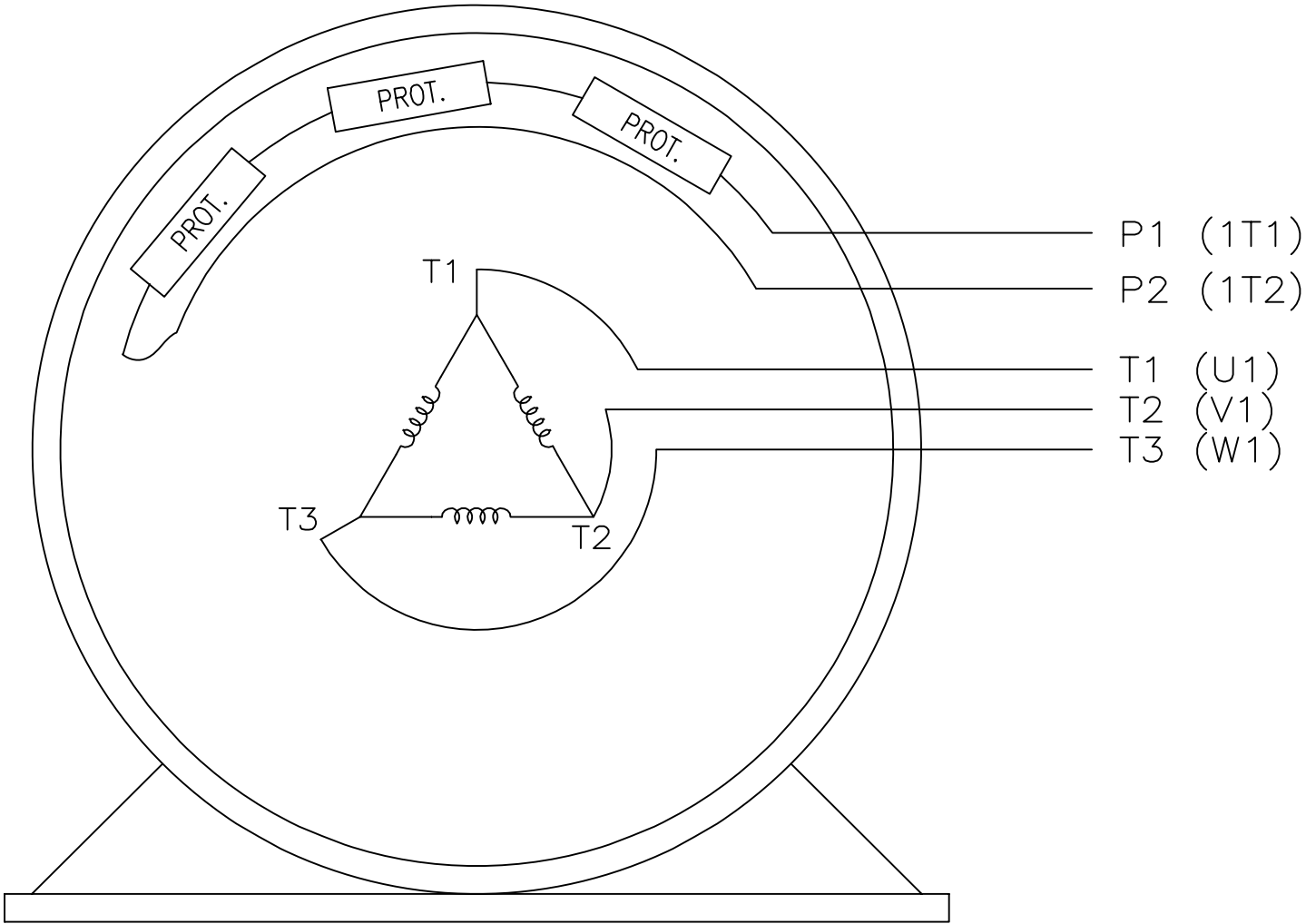
This is an uncontrolled document once printed or downloaded and is subject to change without notice. Date Created:10/12/2021



EE7300S

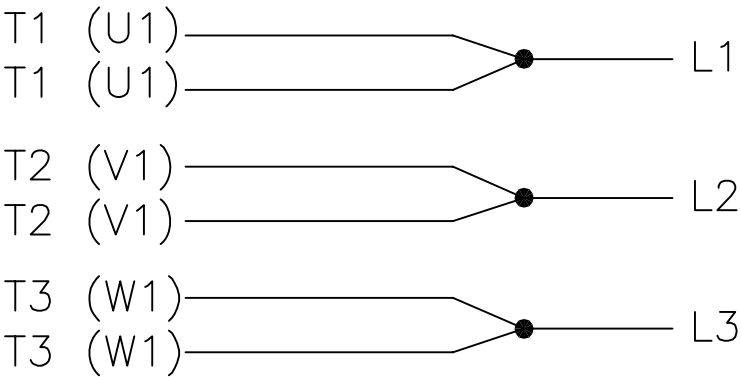
THREE PHASE – SINGLE VOLTAGE MOTOR

TO REVERSE ROTATION:  
INTERCHANGE ANY TWO LINE  
LEAD CONNECTIONS




P1 (1T1)  
P2 (1T2)  
T1 (U1)  
T2 (V1)  
T3 (W1)

IF MOTOR HAS MULTIPLE  
T'S PER LEAD CONNECT  
TOGETHER LIKE T'S



A-9806 DECAL

VIEW OF TERMINAL END

				TOLERANCES UNLESS SPECIFIED		 <b>REGAL-BELOIT CORPORATION</b>	DRAWN KL 12-15-1999			
				DEC.	INCHES		CHK DJK 12-15-1999			
F	UPDATED TITLE BLOCK	HV 02-27-2014	EWB	.X	± -		APPD DJK 12-15-1999			
3	REMOVED "N.C." FROM PROT.'S MU61770	JJB 08-02-2010		.XX	± -	TITLE CONNECTION DIAGRAM – EXTERNAL SINGLE VOLTAGE 3Ø MOTOR	SCALE 1=1			
2	ADDED IEC MARKINGS MU61770	KL 09-16-2004	EAB	.XXX	± -		REF			
1	NEW DRAWING	KL 12-16-1999		.XXXX	± -	MAT'L.	FMF			
NO.	REVISION	BY & DATE	CHK	ANG	± -	FINISH	PREV			
THIS DRAWING IN DESIGN AND DETAIL IS OUR PROPERTY AND MUST NOT BE USED EXCEPT IN CONNECTION WITH OUR WORK ALL RIGHTS OF DESIGN AND INVENTION ARE RESERVED THIS IS AN ELECTRONICALLY GENERATED DOCUMENT – DO NOT SCALE THIS PRINT				RFP		CAD FILE ee7300s	SIZE A	DRAWING NO. EE7300S	PAGE OF	REV. F
				DIST WA-LB-SB						

THIS DRAWING IN DESIGN AND DETAIL IS OUR PROPERTY AND MUST NOT BE USED EXCEPT  
IN CONNECTION WITH OUR WORK ALL RIGHTS OF DESIGN AND INVENTION ARE RESERVED  
THIS IS AN ELECTRONICALLY GENERATED DOCUMENT – DO NOT SCALE THIS PRINT

## CERTIFICATION DATA SHEET

Model#: 449TTFS6065 AP  
 CONN. DIAGRAM: A-EE7300  
 OUTLINE: B-SS517520-2875

WINDING#: T449487 NONE 1  
 ASSEMBLY: F1/F2 CAPABLE

## TYPICAL MOTOR PERFORMANCE DATA

HP	KW	SYNC. RPM	F.L. RPM	FRAME	ENCLOSURE	KVA CODE	DESIGN
450	340	1800	1785	447/449T	TEFC	G	B

PH	Hz	VOLTS	FL AMPS	START TYPE	DUTY	INSL	S.F	AMB°C	ELEVATION
3	60	460	515	ACROSS THE LINE	CONTINUOUS	H1	1.15	40	3300

FULL LOAD EFF: 96.5	3/4 LOAD EFF: 96.5	1/2 LOAD EFF: 96.5	GTD. EFF	ELEC. TYPE	NO LOAD AMPS
FULL LOAD PF: 85	3/4 LOAD PF: 83	1/2 LOAD PF: 78	96.2	SQ CAGE IND RUN	145

F.L. TORQUE	LOCKED ROTOR AMPS	L.R. TORQUE	B.D. TORQUE	F.L. RISE°C
1325 LB-FT	3250	2650 LB-FT 200	2975 LB-FT 225	85

SOUND PRESSURE @ 3 FT.	SOUND POWER	ROTOR WK^2	MAX. WK^2	SAFE STALL TIME	STARTS /HOUR	APPROX. MOTOR WGT
85 dBA	95 dBA	120 LB-FT^2	2000 LB-FT^2	25 SEC.	1	3650 LBS.

## \*\*\* SUPPLEMENTAL INFORMATION \*\*\*

DE BRACKET TYPE	ODE BRACKET TYPE	MOUNT TYPE	ORIENTATION	SEVERE DUTY	HAZARDOUS LOCATION	DRIP COVER	SCREENS	PAINT
STANDARD	STANDARD	RIGID	HORIZONTAL	FALSE	NONE	FALSE	NONE	BLUE (ENAMEL)

BEARINGS		GREASE	SHAFT TYPE	SPECIAL DE	SPECIAL ODE	SHAFT MATERIAL	FRAME MATERIAL
DE	OPE						
BALL	BALL						
6319	6318	POLYREX EM	T	NONE	NONE	1045 HOT ROLLED (C-204)	CAST IRON

THERMO-PROTECTORS				THERMISTORS	CONTROL	SPACE /n HEATERS
THERMOSTATS	PROTECTORS	WDG RTDs	BRG RTDs			
NONE	NOT	NONE	NONE	NONE	FALSE	NONE VOLTS

If Inverter equals NONE, contact factory for further information

INVERTER TORQUE: NONE
INV. HP SPEED RANGE: NONE
ENCODER: NONE
NONE NONE
NONE NONE PPR
BRAKE: NONE NONE
NONE P/N NONE
NONE NONE
- FT-LB NONE V NONE Hz

\*  
N  
O  
T  
E  
S  
\*

DATE: 06/21/2017 07:13:08 AM  
 FORM 3531 REV.3 02/07/99  
 \*\* Subject to change without notice.

## Data Sheet

Date: 16-06-2017

449TTF56087

Customer:

Attention:

Submitted by: FAREEDA DUDEKULA



Submittal

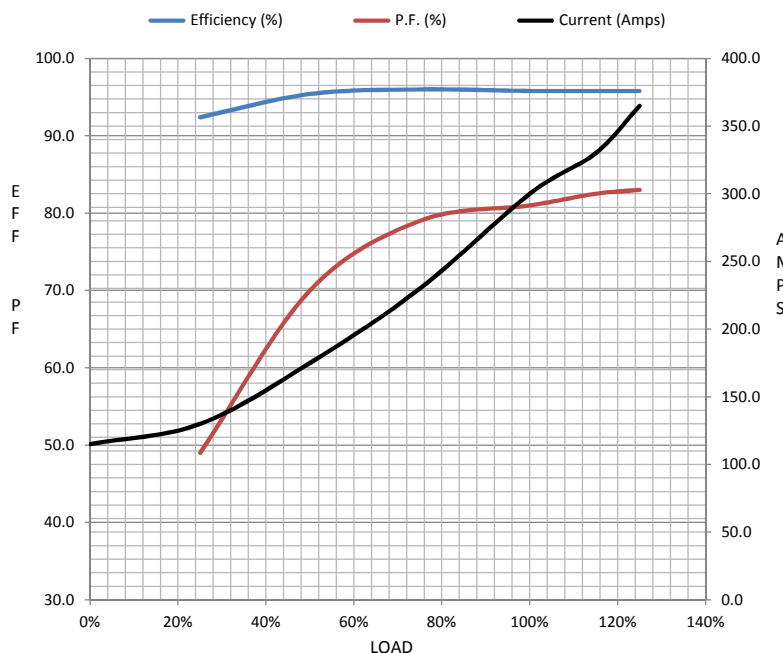
Data @ 460 V

## Motor Load Data

Load	0%	25%	50%	75%	100%	115%	125%	LR	
Current (Amps)	115	130	175	230	300	330	365	1,825	
Torque (ft-lb)	0.00	275	550	825	1,103	1,245	1,385	1,825	
RPM	1200	1196	1194	1192	1190	1,188	1186	0	
Efficiency (%)		92.4	95.4	96.0	95.8	95.8	95.8		
P.F. (%)	3.5	49.0	70.0	79.0	81.0	82.5	83.0	23.0	

## Motor Speed Data

	LR	Pull-Up	BD	Rated	Idle	Information Block	
Speed (RPM)	0	600	1150	1190	1200	HP	250.0
Current (Amps)	1,825	1,700	1,125	300	115	Sync. RPM	1200
Torque (ft-lb)	1,825	1,700	2,825	1,103	0.00	Frame	449



Frame	449			
Enclosure	TEFC			
Construction	TFN			
Voltage	460 V			
Frequency	60 Hz			
Design	B			
LR Code letter	G			
Service Factor	1.15			
Temp Rise @ FL	65 ° C			
Duty	CONT			
Ambient	40 ° C			
Elevation	1,000 feet			
Rotor/Shaft wk²	138 Lb-Ft²			
Ref Wdg	T449626 NONE			
Sound Pressure @ 1M	75 dBA			
VFD Rating	NONE			
Outline Dwg	B-SS519824-2875			
Conn. Diag	A-EE7300S			
Additional Specifications:				
0				
365THFS8036				
EQUIV CKT (OHMS / PHASE)				
R1	R2	X1	X2	Xm
0.0080	0.0080	0.0960	0.1290	2.1770

## Speed -Torque Curve

