

PRODUCT INFORMATION PACKET

marathon®
Motors

Model No: 449TTFS16374

Catalog No: L463A

XRI® General Purpose General Purpose Motor, 300 & 250 HP, 3 Ph, 60 & 50 Hz, 460 & 380 V,
1800 & 1500 RPM, 449T Frame, TEFC



Regal and Marathon are trademarks of Regal Rexnord Corporation or one of its affiliated companies.

©2023 Regal Rexnord Corporation, All Rights Reserved. MC017097E

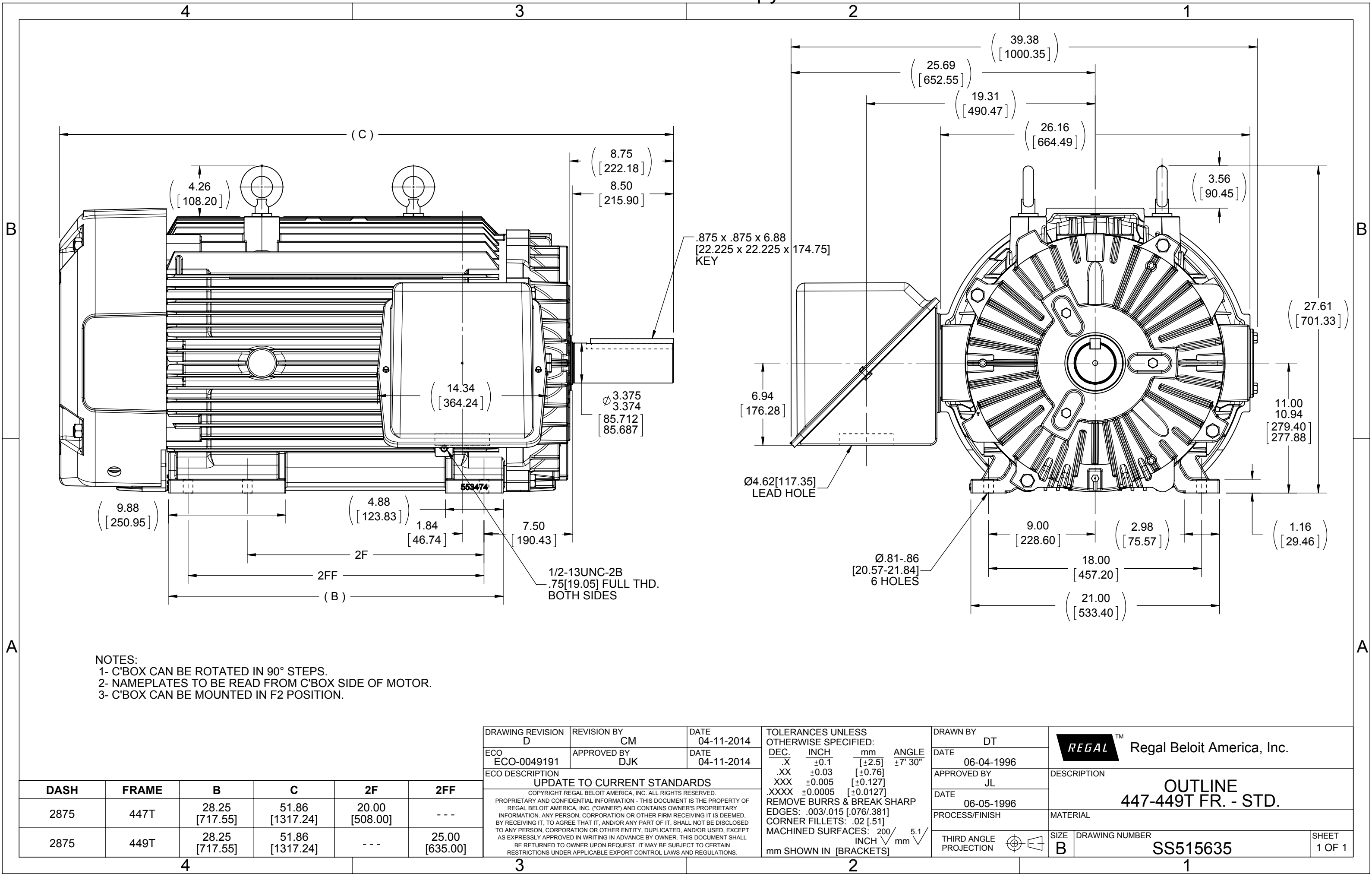
RegalRexnord

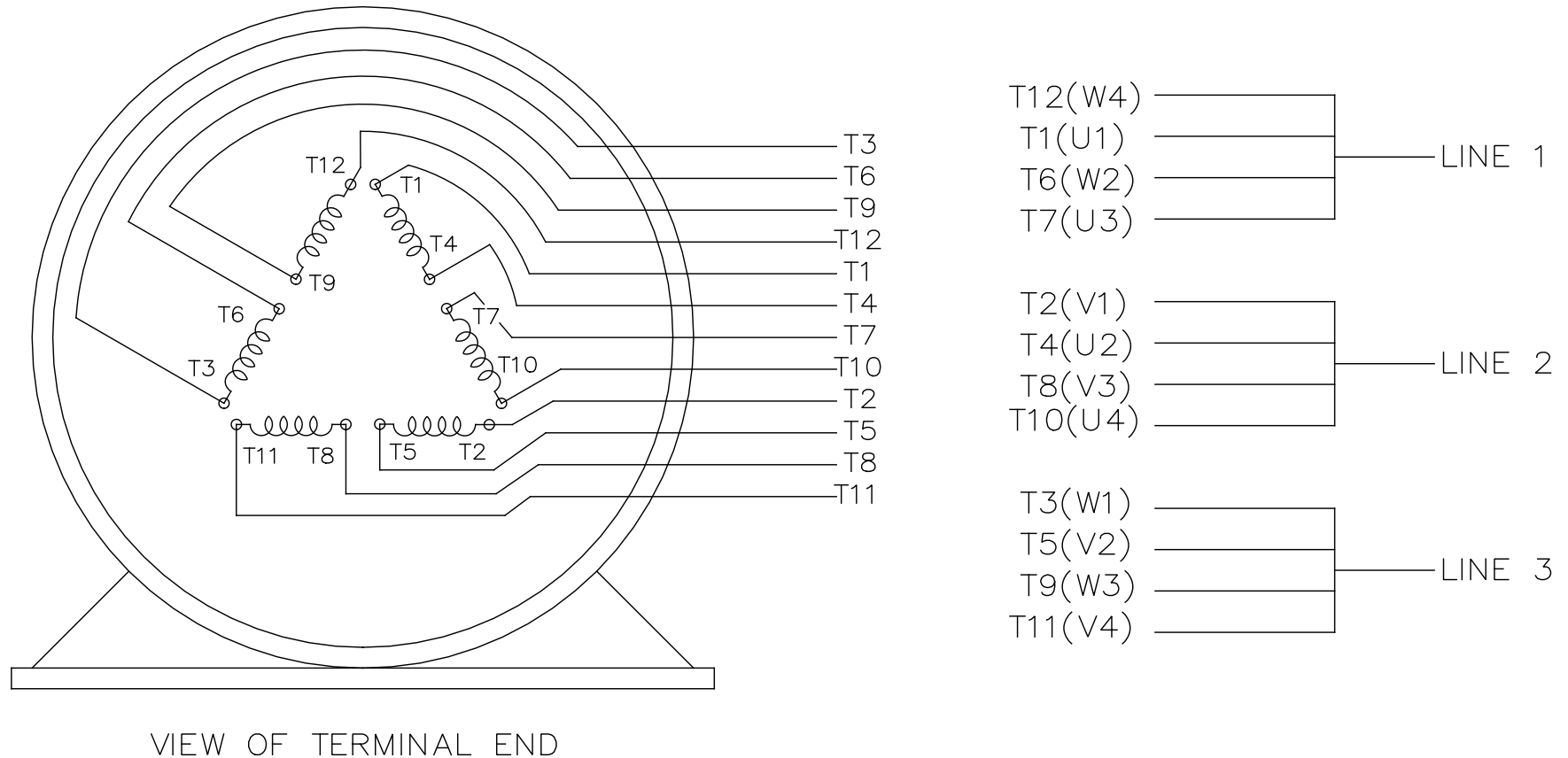
Nameplate Specifications


Phase	3	Output HP	300 & 250 Hp
Output KW	224.0 & 187.0 kW	Voltage	460 & 380 V
Speed	1788 & 1487 rpm	Service Factor	1.15 & 1.15
Frame	449T	Enclosure	Totally Enclosed Fan Cooled
Thermal Protection	No Protection	Efficiency	96.2 & 95.4 %
Ambient Temperature	40 °C	Frequency	60 & 50 Hz
Current	341 & 350 A	Power Factor	84.5
Duty	Continuous	Insulation Class	H
Design Code	B	KVA Code	G
Drive End Bearing Size	6319	Opp Drive End Bearing Size	6318
UL	Recognized	CSA	Y
CE	Y	IP Code	43
Number of Speeds	1		

Technical Specifications

Electrical Type	Squirrel Cage Inverter Rated	Starting Method	Part Wdg Start & Wye Start Delta Run Or Inverter
Poles	4	Rotation	Reversible
Resistance Main	.0085 Ohms	Mounting	Rigid Base
Motor Orientation	Horizontal	Drive End Bearing	Ball
Opp Drive End Bearing	Ball	Frame Material	Cast Iron
Shaft Type	T	Overall Length	28.25 in
Frame Length	28.77 in	Shaft Diameter	3.375 in
Shaft Extension	8.75 in	Assembly/Box Mounting	F1/F2 CAPABLE
Inverter Load	CONSTANT 2:1		
Connection Drawing	A-EE7300BH	Outline Drawing	B-SS515635-2875





				TOLERANCES UNLESS SPECIFIED		 REGAL - BELOIT CORPORATION	DRAWN RJW 02-11-2005							
				DEC.	INCHES		CHK	ML	02-11-2005					
				.X	±.1		APPD	GK	02-11-2005					
				.XX	±.02		SCALE							
D	CHANGED TO REGAL TITLE BLOCK	ECO-0108299	WGJ 08/22/2016	EMH	.XXX	±.005	TITLE CONNECTION DIAGRAM 12 LEAD- SINGLE VOLTAGE				REF			
1	ADDED IEC TERMINAL MARKINGS	CN 41429	JJB 05/24/2007	ML	.XXXX	±.0005	MAT'L.				FMF			
NO.	REVISION		BY & DATE	CHK	ANG	±7'30"	FINISH				PREV			
THIS DRAWING IN DESIGN AND DETAIL IS OUR PROPERTY AND MUST NOT BE USED EXCEPT IN CONNECTION WITH OUR WORK ALL RIGHTS OF DESIGN AND INVENTION ARE RESERVED THIS IS AN ELECTRONICALLY GENERATED DOCUMENT - DO NOT SCALE THIS PRINT				RFP		02-11-2005	CAD FILE		ee7300bh	SIZE	DRAWING NO.	PAGE	OF	REV.
				DIST		LB			A	EE7300BH				C



P.O. BOX 8003
WAUSAU, WI 54401-8003
PH. 715-675-3311

DATA VOLTS: 460

CERTIFICATION DATA SHEET

CUSTOMER: _____ CUSTOMER P.O. #: _____
ORDER #: _____ REFERENCE MODEL #: 449TTFS16374
CONN. DIAGRAM: A-EE7300BH CAT #: L463
OUTLINE: B-SS515635-2875 CUSTOMER PART #: _____
WINDING: T4494215 NONE 1 MOUNTING: F1/F2 CAPABLE
SPEED: _____

TYPICAL MOTOR PERFORMANCE DATA

HP	KW	SYNC RPM	FL RPM	FRAME	ENCLOSURE	TYPE	KVA CODE	DESIGN
300	224	1800	1788	447/449T	TEFC	TFN	G	BC

PH	HZ	VOLTS	AMPS	START TYPE	DUTY	INSL	S.F.	AMB	ELEV.
3	60/50	460#380	341&350	PWS & YDRUN OR INV	CONT	H	1.15	40	3300

F.L. EFF	96.2	3/4 LD EFF	95.4	1/2 LD EFF	94.5	GTD EFF	94.5	ELECT. TYPE	SQ CAGE INV RATED
F.L. PF	84.5	3/4 LD PF	81.0	1/2 LD PF	72.5				

F.L. TORQUE	LR AMPS @ 460 V	L.R. TORQUE	B.D. TORQUE	F.L. RISE (°C)
881 LB-FT	2,200	1,725 LB-FT 196%	2,350 LB-FT 267%	75

@ 3 FT.	POWER	ROTOR WK²	MAX. LOAD WK²	SAFE STALL TIME	STARTS/HOUR	MOTOR WGT
85 dBA	94 dBA	85.0 LB-FT²	2000 LB-FT²	25 SEC.	1	2800 LB.

*** SUPPLEMENTAL INFORMATION ***

DE BRACKET TYPE	ODE BRACKET TYPE	MOUNT TYPE	MOTOR ORIENTATION	SEVERE DUTY	HAZARDOUS LOCATION	DRIP COVER	SCREENS	PAINT
STANDARD	STANDARD	RIGID	HORIZONTAL	NO	NONE	NO	NONE	BLUE (ENAMEL)

BEARINGS	GREASE	SHAFT TYPE	SPECIAL DE	SPECIAL ODE	SHAFT MATERIAL	FRAME MATERIAL
DE ODE						
BALL BALL	POLYREX EM	T	NONE	NONE	1045 HOT ROLLED (C-204)	CAST IRON
6319 6318						

THERMOSTATS	PROTECTORS	WDG RTD's	BRG RTD's	THERMISTORS	CONTROL	SPACE HEATERS
NONE	NOT	NONE	NONE	NONE	FALSE	NA

R1 (ohms/ph)	R2 (ohms/ph)	X1 (ohms/ph)	X2 (ohms/ph)	Xm (ohms/ph)	VIBRATION (in/sec)	FLOAT
0.008	0.006	0.075	0.112	2.75	0.150	ODE

* N O T E S *		INVERTER TORQUE: CONSTANT 2:1 INV. HP SPEED RANGE: NONE
PREPARED BY: FAREEDA DUDEKULA DATE: 9/11/2018		ENCODER: NONE NONE NONE
		NONE PPR
		BRAKE: NONE NONE
		FT-LB: NA
		VOLTAGE: NONE HZ:
FORM: 3531 REV_4 2/27/06		UL: V-INS, CONST UL REC

Data Sheet

Date: 12/3/2018

Customer: _____

Attention: _____

Submitted by: FAREEDA DUDEKULA



449TTFS16374

Submittal

Data @ 460 V

Motor Load Data

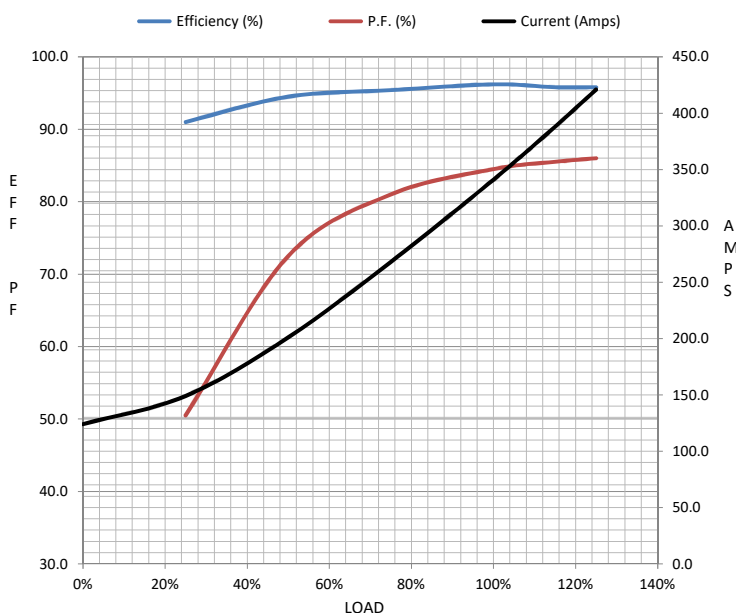
Load	0%	25%	50%	75%	100%	115%	125%	LR	
Current (Amps)	124	149	201	268	341	388	421	2,200	
Torque (ft-lb)	0.00	219	439	660	881	1,015	1,104	1,725	
RPM	1800	1797	1795	1790	1788	1,785	1784	0	
Efficiency (%)		91.0	94.5	95.4	96.2	95.8	95.8		
P.F. (%)	5.0	50.5	72.5	81.0	84.5	85.5	86.0	31.0	

Motor Speed Data

	LR	Pull-Up	BD	Rated	Idle
Speed (RPM)	0	900	1725	1788	1800
Current (Amps)	2,200	2,050	1,500	341	124
Torque (ft-lb)	1,725	1,550	2,350	881	0.00

Information Block

HP	300.0			
Sync. RPM	1800			
Frame	449			
Enclosure	TEFC			
Construction	TFS			
Voltage	460#380	V		
Frequency	60	Hz		
Design	A			
LR Code letter	G			
Service Factor	1.15			
Temp Rise @ FL	75	° C		
Duty	CONT			
Ambient	40	° C		
Elevation	1,000	feet		
Rotor/Shaft wk ²	85.0	Lb-Ft ²		
Ref Wdg	T4494215	NONE		
Sound Pressure @ 1M	85	dBA		
VFD Rating	CONSTANT 2:1			
Outline Dwg	B-SS515635-2875			
Conn. Diag	A-EE7300BH			
Additional Specifications:				
0				
0				
EQUIV CKT (OHMS / PHASE)				
R1	R2	X1	X2	Xm
0.0080	0.0060	0.0750	0.1120	2.7500



Speed -Torque Curve

