

PRODUCT INFORMATION PACKET

marathon®
Motors

Model No: 449TTFCD6086
Catalog No: GT10138
250,1200,TEFC,449T,3/60/460

Miscellaneous

Regal and Marathon are trademarks of Regal Rexnord Corporation or one of its affiliated companies.
©2022 Regal Rexnord Corporation, All Rights Reserved. MC017097E

The logo for Regal Rexnord, featuring a stylized 'R' icon followed by the text 'RegalRexnord'.



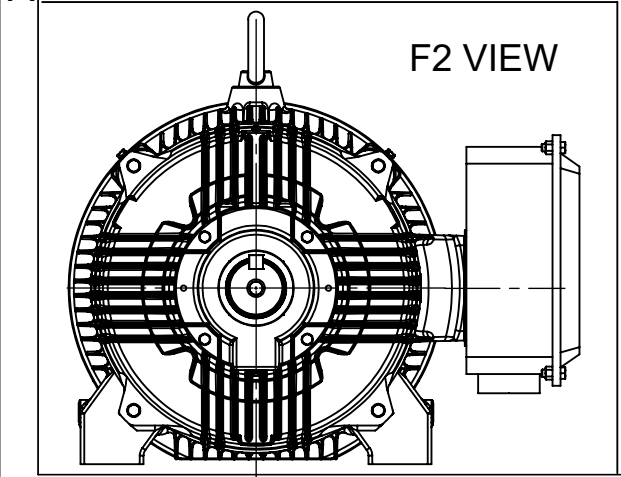
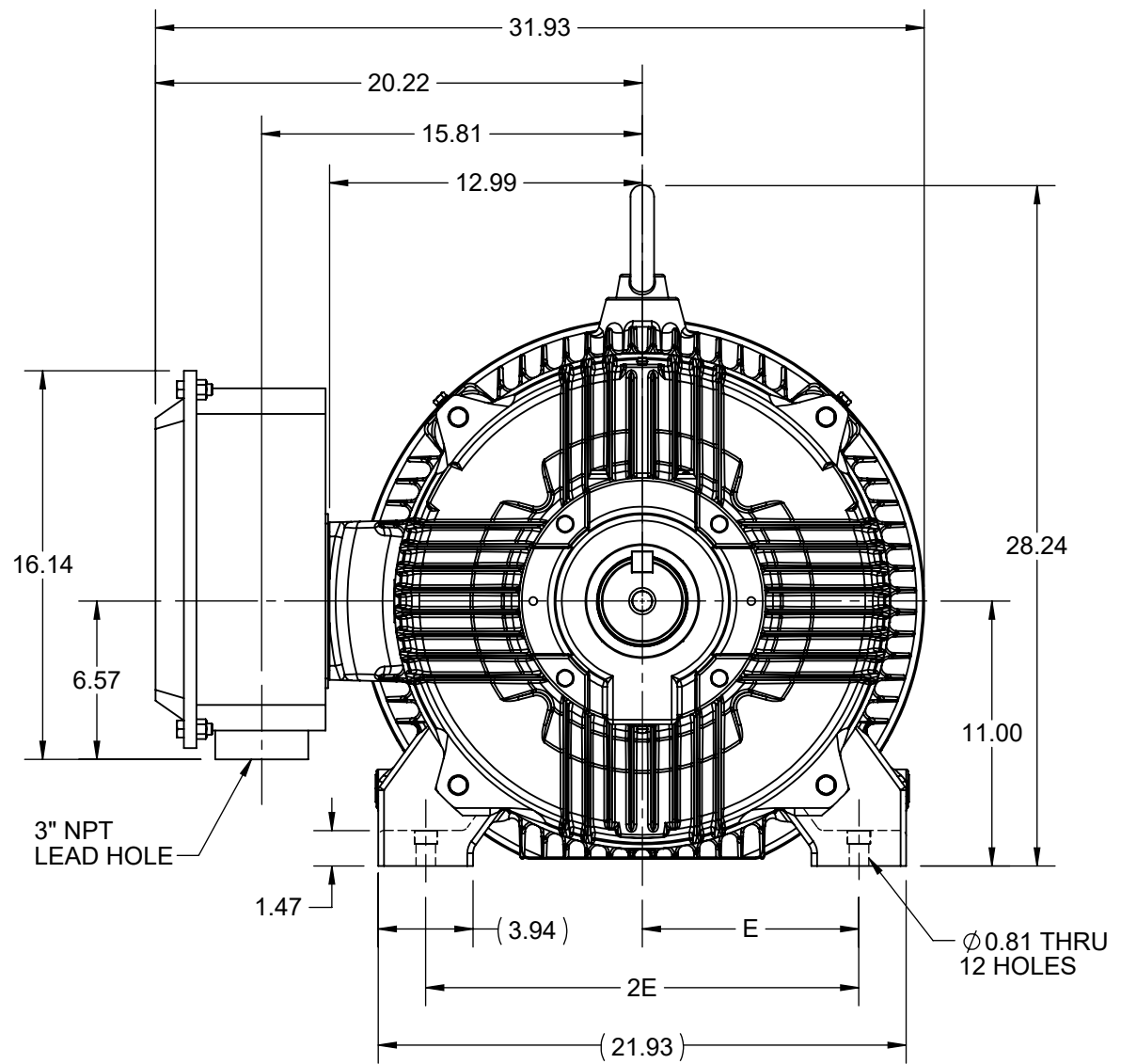
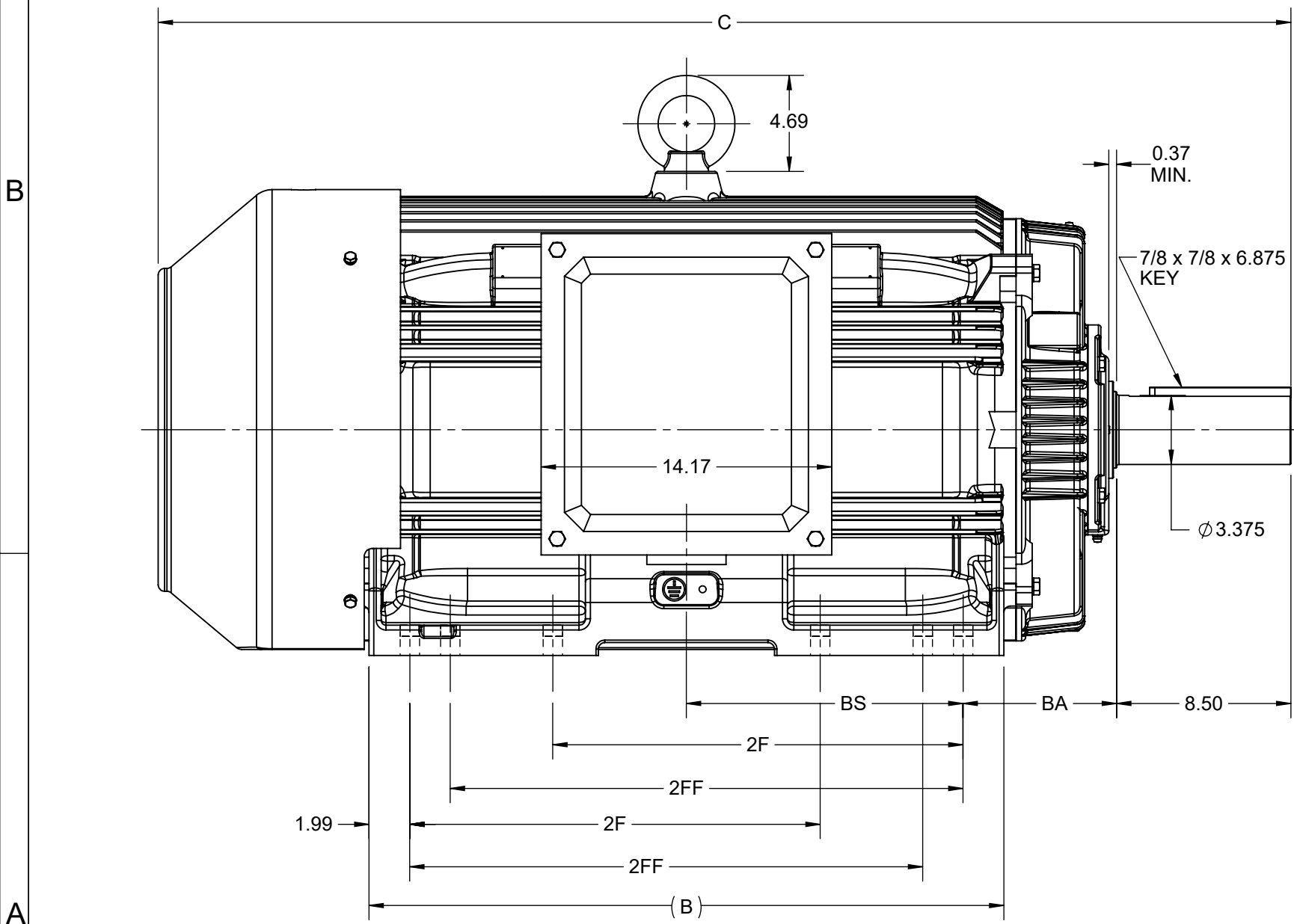
Nameplate Specifications

Technical Specifications

Outline Drawing	SS557013	Connection Drawing	EE7341C
-----------------	----------	--------------------	---------


This is an uncontrolled document once printed or downloaded and is subject to change without notice. Date Created:01/06/2022

4						3		
B	C	E	2E	2F	2FF	BA	BS	MOUNTING
30.94	55.21	9.00	18.00	20.00	25.00	7.50	13.48	F1 OR F2



DRAWING REVISION D	REVISION BY BISWA	REV DATE/© DATE 13/01/2021
ECO CR-0000557	APPROVED BY GNK	DATE 13/01/2021
ECO DESCRIPTION DRAWING UPDATED		
COPYRIGHT (PER REVISION DATE) REGAL BELOIT AMERICA, INC. ALL RIGHTS RESERVED. PROPRIETARY AND CONFIDENTIAL INFORMATION - THIS DOCUMENT IS THE PROPERTY OF REGAL BELOIT AMERICA, INC. ("OWNER") AND CONTAINS OWNER'S PROPRIETARY INFORMATION. ANY PERSON, CORPORATION OR OTHER FIRM RECEIVING IT IS DEEMED, BY RECEIVING IT, TO AGREE THAT IT, AND/OR ANY PART OF IT, SHALL NOT BE DISCLOSED TO ANY PERSON, CORPORATION OR OTHER ENTITY, DUPLICATED, AND/OR USED, EXCEPT AS EXPRESSLY APPROVED IN WRITING IN ADVANCE BY OWNER. THIS DOCUMENT SHALL BE RETURNED TO OWNER UPON REQUEST. IT MAY BE SUBJECT TO CERTAIN RESTRICTIONS UNDER APPLICABLE EXPORT CONTROL LAWS AND REGULATIONS.		

PRIMARY DIMENSIONS ARE INCH
mm DIMENSIONS IN [BRACKETS]
ARE FOR REFERENCE ONLY

DRAWN BY NIV	 Regal Beloit America, Inc.		
DATE 23/05/2016			
APPROVED BY SBD	DESCRIPTION OUTLINE 447/449T FR-TEFC		
DATE 23/05/2016			
REFERENCE	MATERIAL	PROCESS/FINISH	
THIRD ANGLE PROJECTION	SIZE B	DRAWING NUMBER SS557013	SHEET 1 OF 1

THREE PHASE – PART WINDING START DELTA – 6 LEADS

START

CONNECT T1 TO LINE 1
CONNECT T2 TO LINE 2
CONNECT T3 TO LINE 3
T7–T8–T9 OPEN

RUN

CONNECT T1&T7 TO LINE 1
CONNECT T2&T8 TO LINE 2
CONNECT T3&T9 TO LINE 3

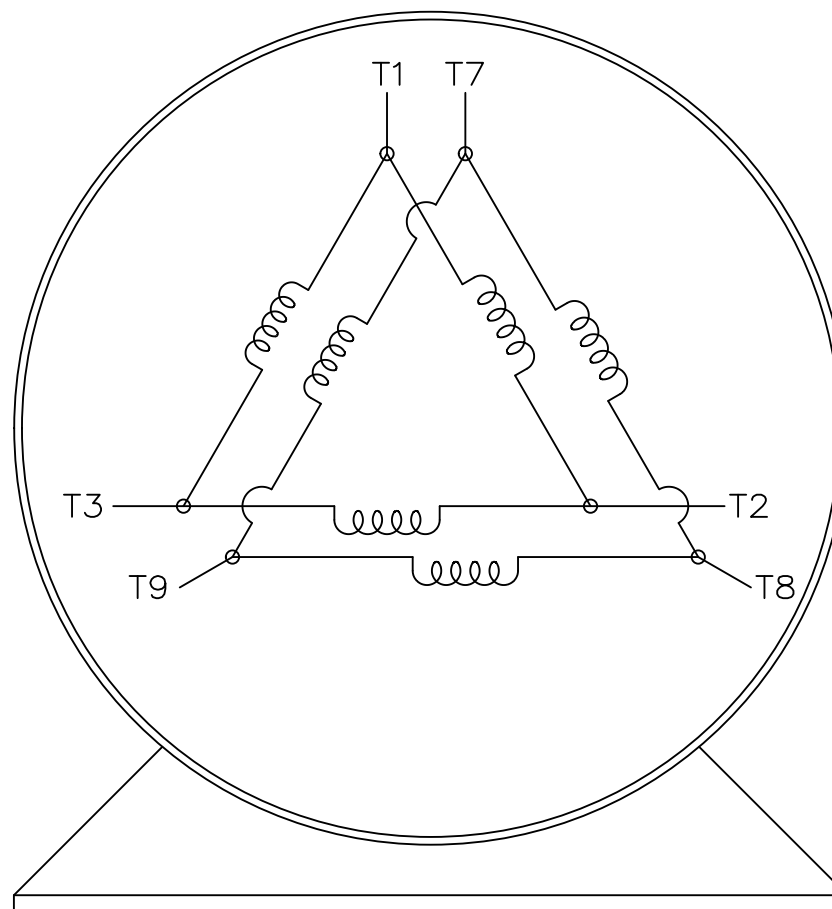
IF MOTOR HAS 2 T'S

START


CONNECT T1,T1 TO LINE 1
CONNECT T2,T2 TO LINE 2
CONNECT T3,T3 TO LINE 3
T7,T7–T8,T8–T9,T9 OPEN

RUN

CONNECT T1,T1&T7,T7 TO LINE 1
CONNECT T2,T2&T8,T8 TO LINE 2
CONNECT T3,T3&T9,T9 TO LINE 3



VIEW OF TERMINAL END

			TOLERANCES UNLESS SPECIFIED		<div>  REGAL-BELOIT CORPORATION </div>	DRAWN BLR 03-09-1998		
			DEC.	INCHES		CHK	ML	03-23-1998
			.X	±	–	APPD	GK	03-23-1998
			.XX	±	–	SCALE 1=1		
E	NOTE ADDED FOR 2 T'S	NAR 17-12-2020	RC	.XXX	±	TITLE CONNECTION DIAGRAM		
D	RE-DRAWN WITH REGAL LOGO ECO-0110493	WGJ 09-30-2016	EMH	.XXXX	±	3ø – 6 LEADS		
NO.	REVISION	BY & DATE	CHK	ANG	±	MAT'L.		
						FMP		
						PREV		
			RFP			SIZE	DRAWING NO.	PAGE OF
			DIST			A	EE7341C	REV. E
						CAD FILE EE7341C		

THIS DRAWING IN DESIGN AND DETAIL IS OUR PROPERTY AND MUST NOT BE USED EXCEPT IN CONNECTION WITH OUR WORK ALL RIGHTS OF DESIGN AND INVENTION ARE RESERVED
THIS IS AN ELECTRONICALLY GENERATED DOCUMENT – DO NOT SCALE THIS PRINT