

PRODUCT INFORMATION PACKET

Model No: 449TTDN7087

Catalog No: H821

Other Purpose Motor, 350 HP, 3 Ph, 60 Hz, 460 V, 1200 RPM, 449T Frame, DP

Regal and are trademarks of Regal Rexnord Corporation or one of its affiliated companies.
©2022 Regal Rexnord Corporation, All Rights Reserved. MC017097E



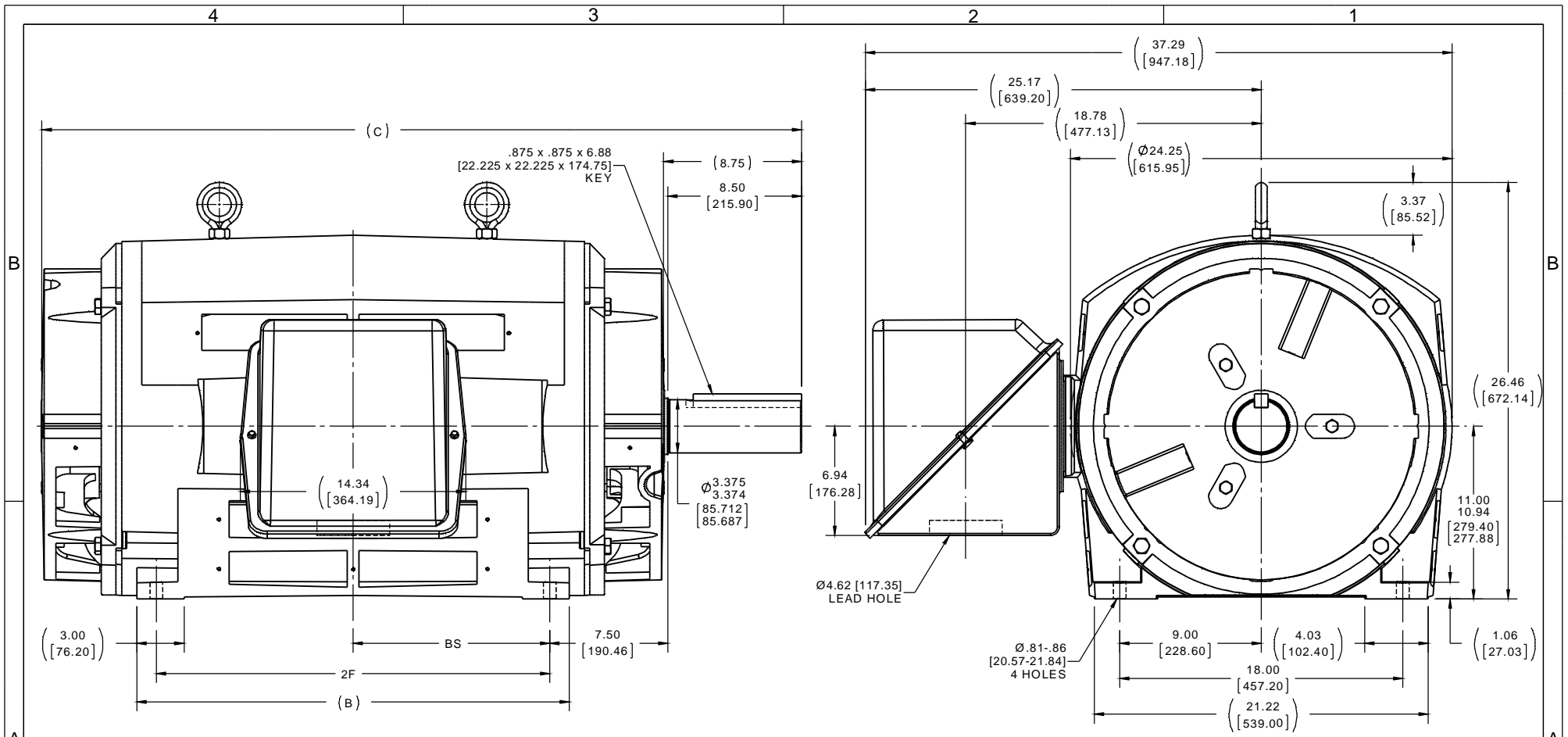
Nameplate Specifications

Output HP	350 Hp	Output KW	260.0 kW
Frequency	60 Hz	Voltage	460 V
Current	412.0 A	Speed	1185 rpm
Service Factor	1	Phase	3
Efficiency	95 %	Power Factor	83.5
Duty	Continuous	Insulation Class	F
Design Code	B	KVA Code	G
Frame	449T	Enclosure	Drip Proof
Thermal Protection	Thermostat	Ambient Temperature	40 °C
Drive End Bearing Size	6319	Opp Drive End Bearing Size	6318
UL	Recognized	CSA	Y
CE	N	IP Code	12
Number of Speeds	1		

Technical Specifications

Electrical Type	Squirrel Cage Induction Run	Starting Method	Part Wdg Start & Wye Start Delta Run
Poles	6	Rotation	Reversible
Resistance Main	.012 Ohms	Mounting	Rigid Base
Motor Orientation	Horizontal	Drive End Bearing	Ball
Opp Drive End Bearing	Ball	Frame Material	Cast Iron
Shaft Type	T	Overall Length	48.29 in
Frame Length	29.38 in	Shaft Diameter	3.375 in
Shaft Extension	8.75 in	Assembly/Box Mounting	F1/F2 CAPABLE
Connection Drawing	A-EE7300CB	Outline Drawing	B-SS514258-2938

This is an uncontrolled document once printed or downloaded and is subject to change without notice. Date Created:09/07/2022



- NOTES:
1. CONDUIT BOX CAN BE ROTATED IN 90° STEPS.
 2. CONDUIT BOX CAN BE MOUNTED ON OPPOSITE SIDE BY REMOVING BRACKETS AND TURNING FRAME 180°.
 3. NAMEPLATES TO BE READ FROM CONDUIT BOX SIDE OF MOTOR.
 4. DIMENSION IN [] DESIGNATE MILLIMETERS.

DASH	FRAME	B	C	2F	BS
2438	447T	22.50 [571.50]	43.29 [1099.57]	20.00 [508.00]	10.00 [254.00]
2938	449T	27.50 [698.50]	48.29 [1226.57]	25.00 [635.00]	12.50 [317.50]

DRAWING REVISION	REVISION BY	DATE
C	JJB	03-06-2015
ECCO	JHA	03-06-2015

ECO-0073041

APPROVED BY JHA

DATE 03-06-2015

ECO DESCRIPTION

UPDATED TO CURRENT STANDARDS

COPYRIGHT REGAL BELOIT AMERICA, INC. ALL RIGHTS RESERVED. PROPRIETARY AND CONFIDENTIAL INFORMATION. THIS DOCUMENT IS THE PROPERTY OF REGAL BELOIT AMERICA, INC. (OWNER) AND CONTAINS OWNER'S PROPRIETARY INFORMATION. ANY PERSON, CORPORATION OR OTHER FIRM RECEIVING IT IS DEEMED, BY RECEIVING IT, TO AGREE THAT IT, AND/OR ANY PART OF IT, SHALL NOT BE DISCLOSED TO ANY PERSON, CORPORATION OR OTHER ENTITY, DUPLICATED, AND/OR USED, EXCEPT AS EXPRESSLY APPROVED IN WRITING IN ADVANCE BY OWNER. THIS DOCUMENT SHALL BE RETURNED TO OWNER UPON REQUEST. IT MAY BE SUBJECT TO CERTAIN RESTRICTIONS UNDER APPLICABLE EXPORT CONTROL LAWS AND REGULATIONS.

TOLERANCES UNLESS OTHERWISE SPECIFIED:

DEC.	INCH.	mm	ANGLE
.X	±0.1	[±2.5]	±0.5°
.XX	±0.01	[±0.25]	
.XXX	±0.005	[±0.127]	
.XXXX	±0.0005	[±0.0127]	

REMOVE BURRS & BREAK SHARP EDGES: .003/.015 [0.076/.381] X 45°

CORNER FILLETS: R.02 [.51]

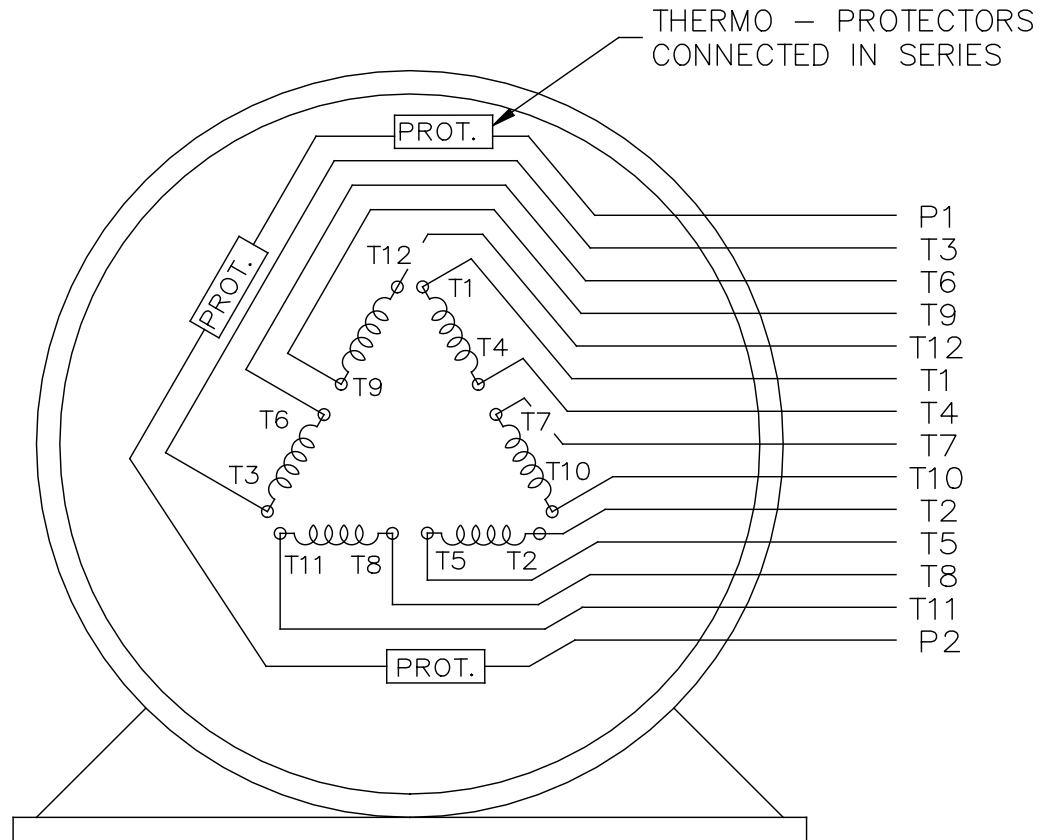
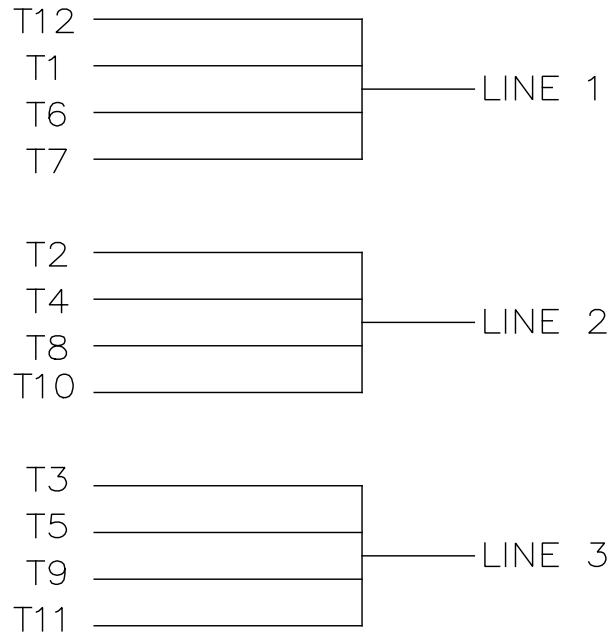
MACHINED SURFACES: 125/INCH √ mm 3.2

mm SHOWN IN [BRACKETS]

DRAWN BY	DATE	APPROVED BY	DATE	REFERENCE	THIRD ANGLE PROJECTION	SIZE	DRAWING NUMBER	PROCESS/FINISH	SHEET
JL	06-24-1992	JPN	07-10-1992		AS SHOWN	B	SS514258		1 OF 1

DESCRIPTION: OUTLINE 447/449T FR. - DR. PR.

REGAL™ Regal Beloit America, Inc.



THERMO - PROTECTORS
CONNECTED IN SERIES

VIEW OF TERMINAL END

		TOLERANCES UNLESS SPECIFIED		REGAL - BELOIT CORPORATION		DRAWN KL 02-27-2003	
		DEC.	INCHES			CHK	GFH 03-03-2003
		.X	± -			APPD	JES 03-03-2003
		.XX	± -	TITLE CONNECTION DIAGRAM - EXTERNAL		SCALE	1=1
		.XXX	± -	12 LEAD SINGLE VOLTAGE		REF	
A	CHANGED TO REGAL TITLEBLOCK ECO-0108299	WGJ	08-18-2016	EMH	.XXXX ± -	MAT'L.	FMF
NO.	REVISION	BY & DATE	CHK	ANG	± -	FINISH	PREV
THIS DRAWING IN DESIGN AND DETAIL IS OUR PROPERTY AND MUST NOT BE USED EXCEPT IN CONNECTION WITH OUR WORK ALL RIGHTS OF DESIGN AND INVENTION ARE RESERVED THIS IS AN ELECTRONICALLY GENERATED DOCUMENT - DO NOT SCALE THIS PRINT				RFP	CAD FILE EE7300CB	SIZE	DRAWING NO. PAGE OF REV.
				DIST		A	EE7300CB