

PRODUCT INFORMATION PACKET



Model No: 449TSTFS16920
Catalog No: 449TSTFS16920
350,3600,TEFC,447/449TS,3/60/460

Regal and Marathon are trademarks of Regal Rexnord Corporation or one of its affiliated companies.
©2023 Regal Rexnord Corporation, All Rights Reserved. MC017097E



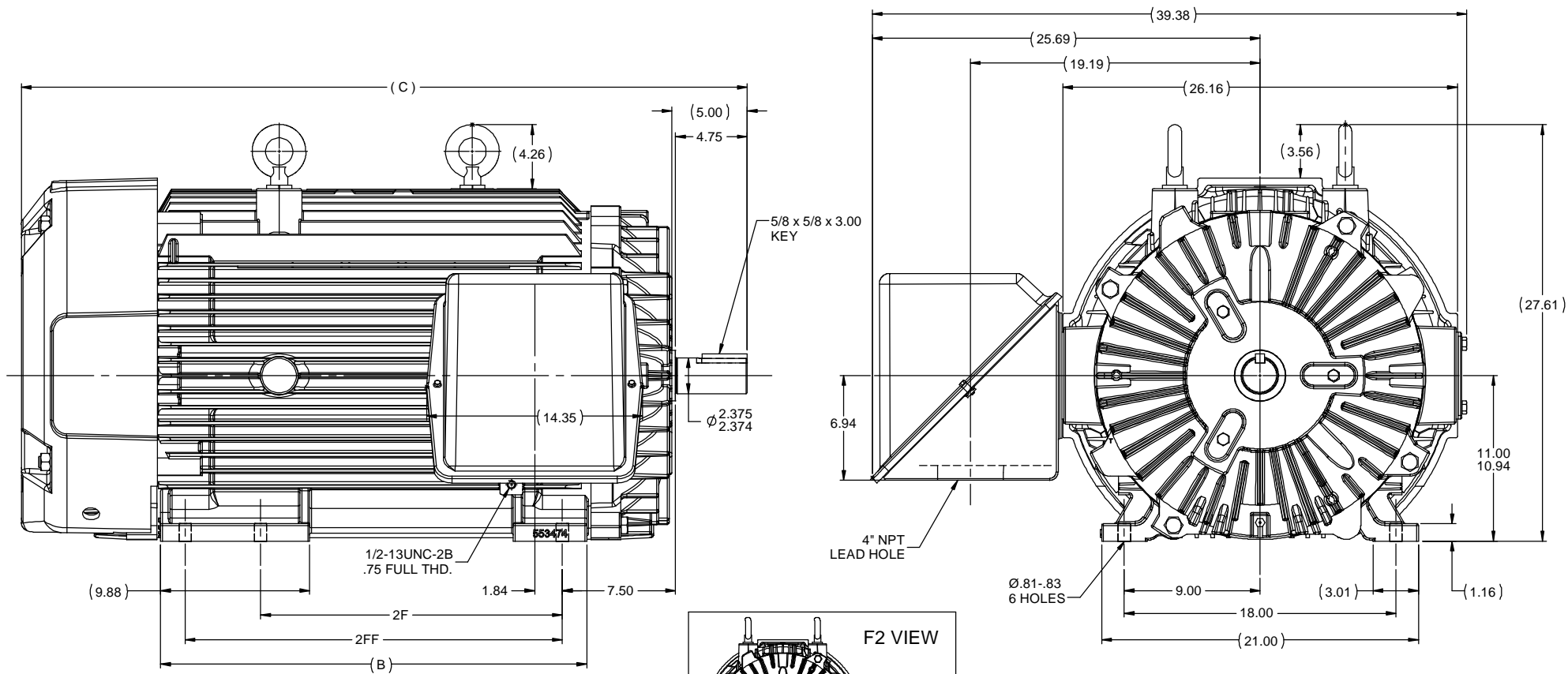
Nameplate Specifications

Phase	3	Output HP	350 Hp
Output KW	260.0 kW	Voltage	460 V
Speed	3572 rpm	Service Factor	1.15
Frame	447/449TS	Enclosure	Totally Enclosed Fan Cooled
Thermal Protection	No Protection	Efficiency	95.8 %
Ambient Temperature	40 °C	Frequency	60 Hz
Current	380.0 A	Power Factor	89
Duty	Continuous	Insulation Class	F
Design Code	B	KVA Code	G
Drive End Bearing Size	6313	Opp Drive End Bearing Size	6313
UL	Recognized	CSA	Y
CE	Y	IP Code	54
Number of Speeds	1		

Technical Specifications

Electrical Type	Squirrel Cage Induction Run	Starting Method	Across The Line
Poles	2	Rotation	Reversible
Resistance Main	.0072 Ohms	Mounting	Rigid Base
Motor Orientation	Horizontal	Drive End Bearing	Ball
Opp Drive End Bearing	Ball	Frame Material	Cast Iron
Shaft Type	TS	Assembly/Box Mounting	F1/F2 CAPABLE
Outline Drawing	SS515689-2875	Connection Drawing	EE7300V

This is an uncontrolled document once printed or downloaded and is subject to change without notice. Date Created:12/12/2023



NOTES:

1. C'BOX CAN BE ROTATED IN 90° SETPS.

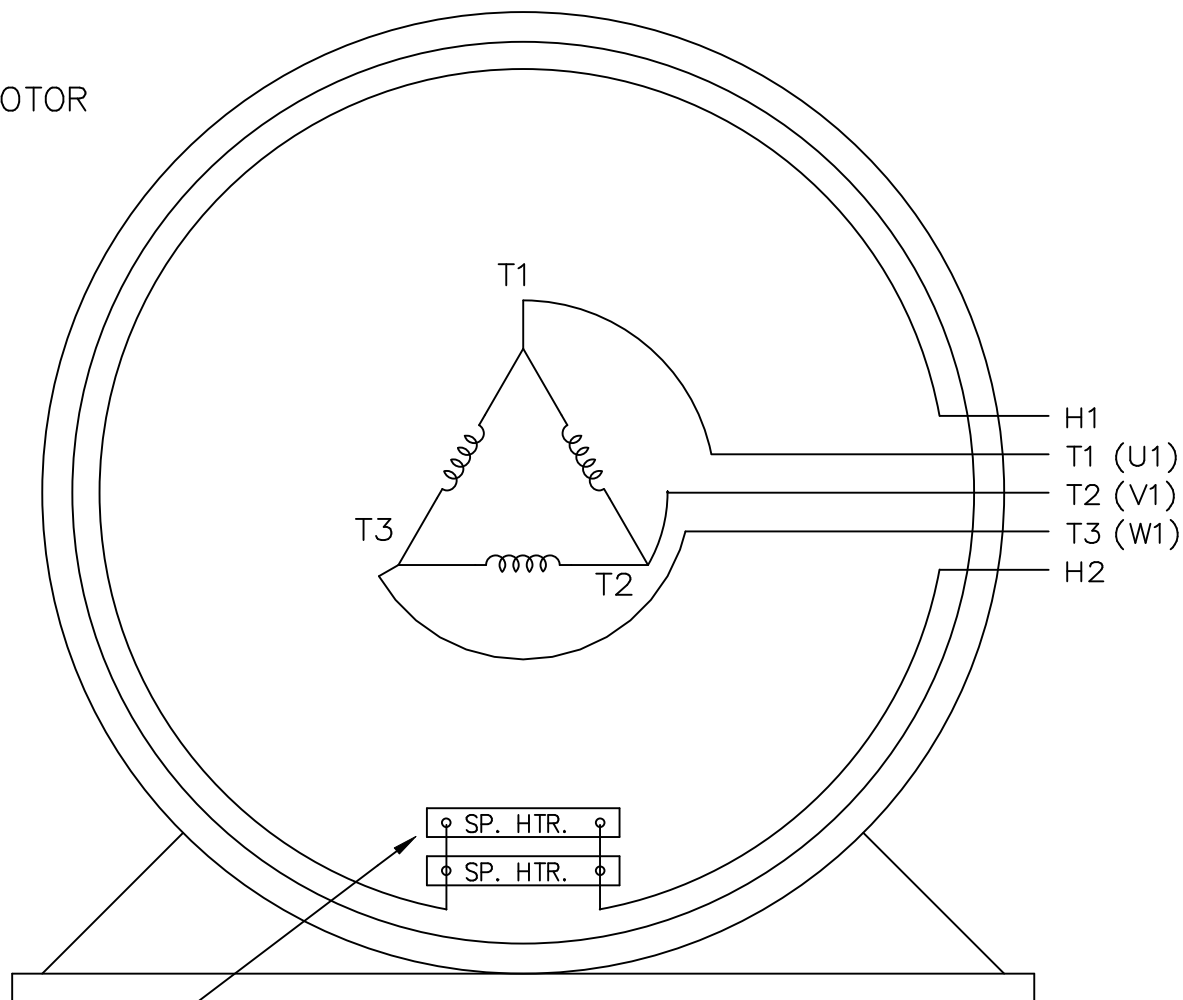
2. NAMEPLATES TO BE READ FROM C'BOX SIDE OF MOTOR.

DASH	FRAME	C	B	2F	2XF
2875	447TS	48.09	28.25	20.00	---
2875	449TS	48.09	28.25	---	25.00

NO	REVISION	BY & DATE	CHK	ANG	±7'30"	FINISH	PREV	SIZE	DRAWING NO	PAGE	OF	REV
6	UPDATED FRAME TO CURRENT STD'S. MU108818	JJB 7/16/2012	MH									
5	UPDATED TO SOLIDWORKS, AND UPDATED FRAME	CJR 2/15/2012	SSW	DEC	INCHES							
4	REVISED FAN GAURD MU76102	RJW 11-6-6	ML	X	±.1							
3	UPDATED C'BOX GEMETRY CN28404	DRS 11-4-02	XX		±.03							
2	ADD GRD.PADS&HOLES TO FRAME PER CN21725-983	KL 4-6-97	XXX		±.005							
1	NEW DRAWING CN22247	BLR 6-19-96	XXXX		±.0005							
						TITLE OUTLINE- TEFC		447/9TS FR.- STD- TAPPED LEAD HOLE		SCALE 1:6.5		
						MATERIAL		REF		FIMF		
						FINISH		PREV		PAGE OF		
						NETWORK FILE NAME		SS515689		REV 6		



SINGLE VOLTAGE THREE PHASE MOTOR



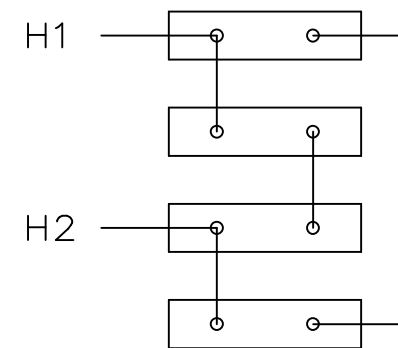
WHEN MORE THAN ONE
SPACE HEATER, CONNECT
IN PARALLEL

VIEW OF TERMINAL END

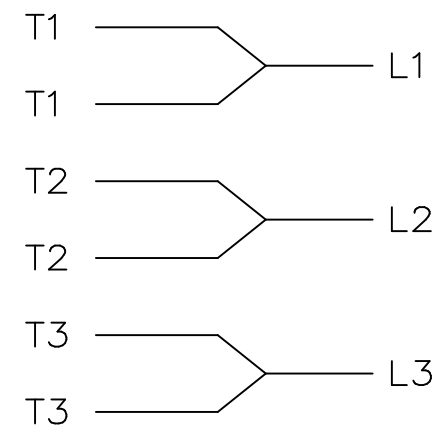
NOTE: IEC LEAD MARKINGS ARE NOTED IN PARENTHESES

EE7300V

SPACE HEATERS
CONNECTED IN
SERIES PARALLEL



IF MOTOR OR GEN.
HAS 6 LEADS



				TOLERANCES UNLESS SPECIFIED		MARATHON ELECTRIC	DRAWN DJK 04-29-1993			
				DEC.	INCHES		CHK	ML	04-30-1993	
7	ADDED IEC LEAD MARKINGS AND NOTE	AK 08-24-2008	SVL	.X	±.1		APPD	TB	04-30-1993	
6	REDRAWN IN AUTOCAD	TAT 08-02-2004	ML	.XX	±.02	TITLE CONNECTION DIAGRAM 3Ø-SINGLE VOLTAGE-WITH SPACE HEATERS	SCALE 1=1			
5	REDRAWN ON CADD, ADDED SPACE HEATERS WITH	DJK 05-03-1993		.XXX	±.005		REF			
	SERIES PARALLEL CONNECTION 4025224			.XXXX	±.0005	MAT'L.	FMF			
NO.	REVISION	BY & DATE	CHK	ANG	±7'30"	FINISH	PREV			
THIS DRAWING IN DESIGN AND DETAIL IS OUR PROPERTY AND MUST NOT BE USED EXCEPT IN CONNECTION WITH OUR WORK ALL RIGHTS OF DESIGN AND INVENTION ARE RESERVED THIS IS AN ELECTRONICALLY GENERATED DOCUMENT - DO NOT SCALE THIS PRINT				RFP	CAD FILE ee7300v			SIZE	DRAWING NO.	PAGE OF
				DIST				A	EE7300V	REV. 7

