

PRODUCT INFORMATION PACKET

marathon[®]
Motors

Model No: 449TSTFCD36026
Catalog No: 449TSTFCD36026
250,1800,TEFC,449TSC,3/60/460

Regal and Marathon are trademarks of Regal Rexnord Corporation or one of its affiliated companies.
©2023 Regal Rexnord Corporation, All Rights Reserved. MC017097E

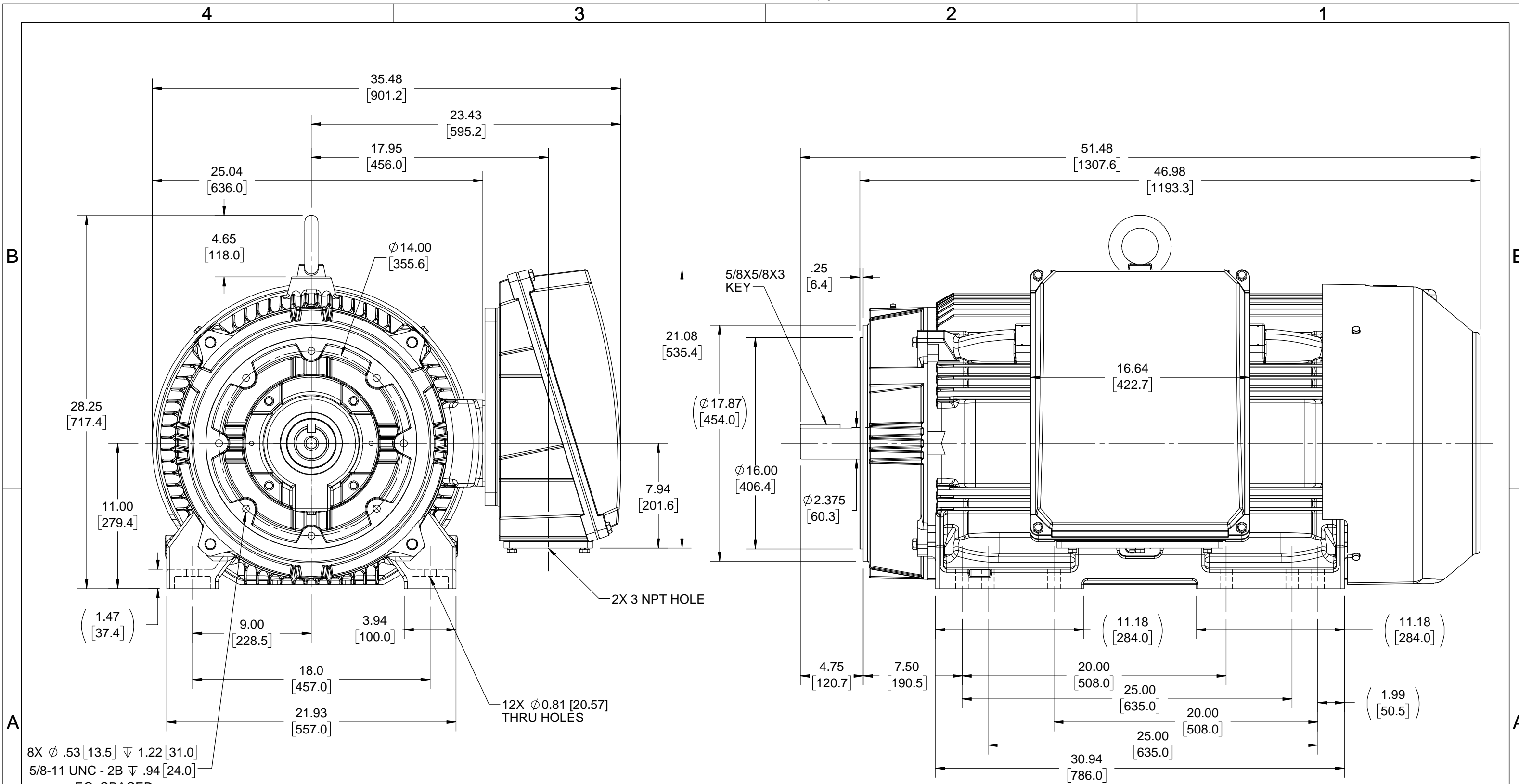
The logo for Regal Rexnord, featuring a stylized 'R' icon followed by the text 'RegalRexnord'.

Nameplate Specifications

Technical Specifications

Shaft Diameter	2.375 in		
Outline Drawing	SS558145	Connection Drawing	EE7340

This is an uncontrolled document once printed or downloaded and is subject to change without notice. Date Created:04/24/2023

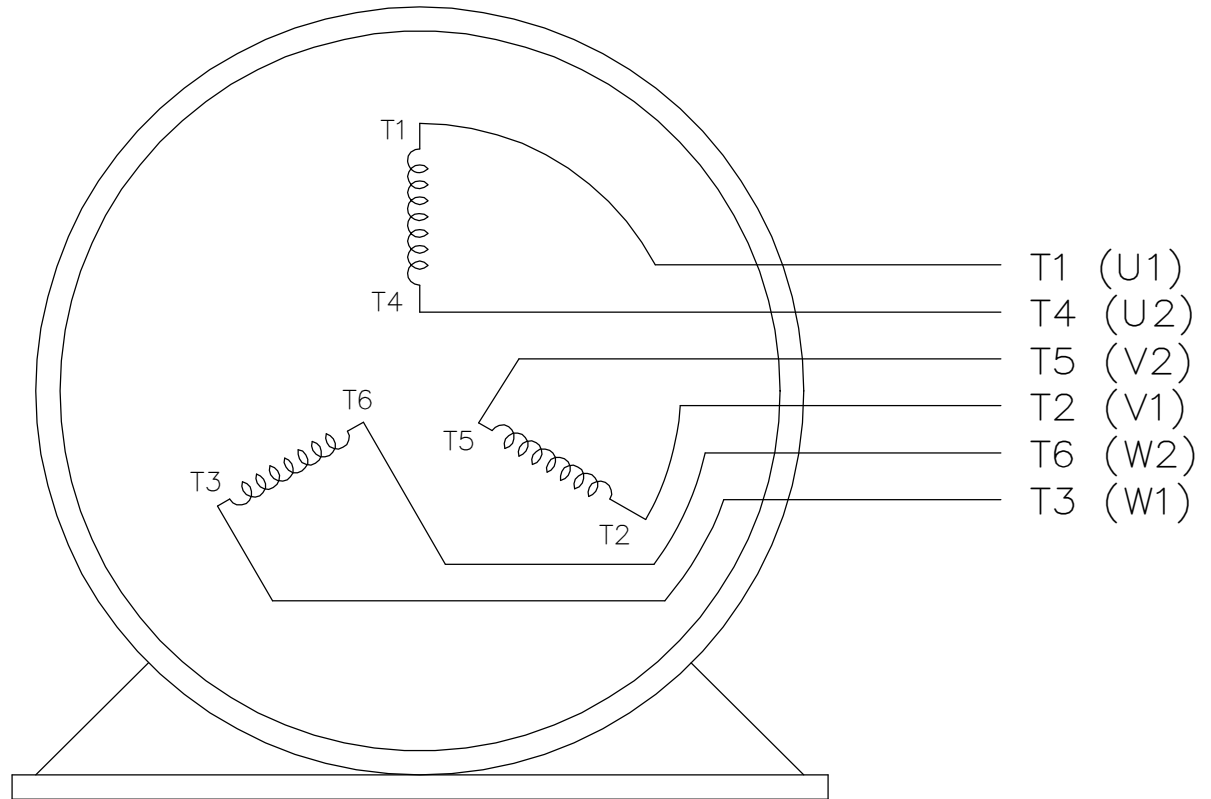
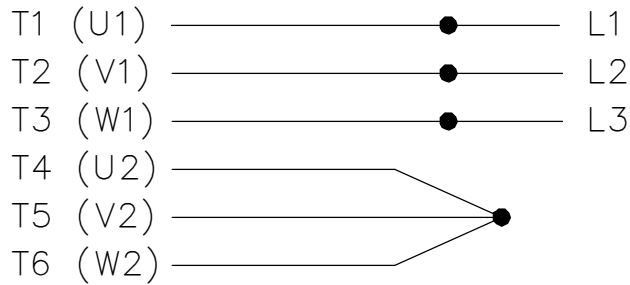


8X ϕ .53 [13.5] ∇ 1.22 [31.0]
 5/8-11 UNC - 2B ∇ .94 [24.0]
 EQ. SPACED

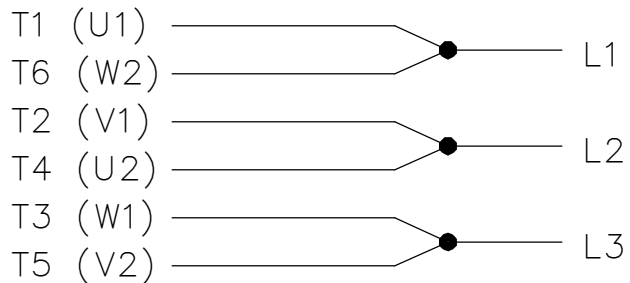
DRAWING REVISION A	REVISION BY JAY	REV DATE/© DATE 1/7/2020	TOLERANCES (EXCEPT AS NOTED): DEC. INCH mm ANGLE .X \pm 0.1 [\pm 3] \pm 7' 30" .XX \pm 0.03 [\pm 0.8] .XXX \pm 0.005 [\pm 0.13] .XXXX \pm 0.0005 [\pm 0.013] REMOVE BURRS & BREAK SHARP EDGES: .003/.015 [.08/.38] X 45° CORNER FILLETS: R.02 [.5] MACHINED SURFACES: 200/ 5.1 INCH \sqrt mm mm DIMENSIONS IN [BRACKETS] ARE FOR REFERENCE ONLY	DRAWN BY JAY	REGAL ® Regal Beloit America, Inc.
ECO ECO-0188732	APPROVED BY JAY	DATE 1/7/2020		DATE 1/7/2020	
ECO DESCRIPTION NEW DRAWING				APPROVED BY JAY	DESCRIPTION OUTLINE
COPYRIGHT (PER REVISION DATE) REGAL BELOIT AMERICA, INC. ALL RIGHTS RESERVED. PROPRIETARY AND CONFIDENTIAL INFORMATION - THIS DOCUMENT IS THE PROPERTY OF REGAL BELOIT AMERICA, INC. ("OWNER") AND CONTAINS OWNER'S PROPRIETARY INFORMATION. ANY PERSON, CORPORATION OR OTHER FIRM RECEIVING IT IS DEEMED, BY RECEIVING IT, TO AGREE THAT IT, AND/OR ANY PART OF IT, SHALL NOT BE DISCLOSED TO ANY PERSON, CORPORATION OR OTHER ENTITY, DUPLICATED, AND/OR USED, EXCEPT AS EXPRESSLY APPROVED IN WRITING IN ADVANCE BY OWNER. THIS DOCUMENT SHALL BE RETURNED TO OWNER UPON REQUEST. IT MAY BE SUBJECT TO CERTAIN RESTRICTIONS UNDER APPLICABLE EXPORT CONTROL LAWS AND REGULATIONS.				DATE 1/7/2020	449TSC Fr - TEFC - C'FACE - F2 MTG
				REFERENCE	MATERIAL
				THIRD ANGLE PROJECTION	PROCESS/FINISH
				SIZE B	DRAWING NUMBER SS558145
					SHEET 1 OF 1

THREE PHASE
WYE START DELTA RUN

START


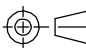


RUN



VIEW OF TERMINAL END

NOTE:
IEC LEAD MARKINGS ARE NOTED
IN PARANTHESES

DRAWING REVISION F		REVISION BY RTT	REV DATE/© DATE 05-29-2019	TOLERANCES (EXCEPT AS NOTED):		DRAWN BY LZ		 Regal Beloit America, Inc.		
ECO ECO-0167538		APPROVED BY JWA	DATE 05-29-2019	DEC. .X INCH ±0.1 mm [±3] ANGLE ±7' 30"	DATE 01-06-1994	DESCRIPTION CONNECTION DIAGRAM 3<MOD-DIAM> - WYE START DELTA RUN				
ECO DESCRIPTION UPDATED TITLE BLOCK				REMOVE BURRS & BREAK SHARP EDGES: .003/.015 [.08/.38] X 45°		APPROVED BY GK		MATERIAL		PROCESS/FINISH
<small>COPYRIGHT (PER REVISION DATE) REGAL BELOIT AMERICA, INC. ALL RIGHTS RESERVED. PROPRIETARY AND CONFIDENTIAL INFORMATION - THIS DOCUMENT IS THE PROPERTY OF REGAL BELOIT AMERICA, INC. ("OWNER") AND CONTAINS OWNER'S PROPRIETARY INFORMATION. ANY PERSON, CORPORATION OR OTHER FIRM RECEIVING IT IS DEEMED, BY RECEIVING IT, TO AGREE THAT IT, AND/OR ANY PART OF IT, SHALL NOT BE DISCLOSED TO ANY PERSON, CORPORATION OR OTHER ENTITY, DUPLICATED, AND/OR USED, EXCEPT AS EXPRESSLY APPROVED IN WRITING IN ADVANCE BY OWNER. THIS DOCUMENT SHALL BE RETURNED TO OWNER UPON REQUEST. IT MAY BE SUBJECT TO CERTAIN RESTRICTIONS UNDER APPLICABLE EXPORT CONTROL LAWS AND REGULATIONS.</small>				CORNER FILLETS: R.02 [.5]		DATE 01-18-1994		DRAWING NUMBER EE7340		SHEET 1 OF 1
				MACHINED SURFACES: 200/ 5.1 INCH √ mm √		REFERENCE		THIRD ANGLE PROJECTION 		SIZE A