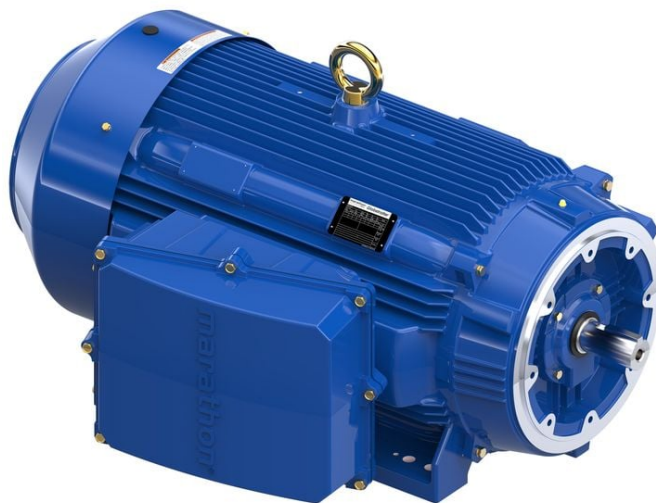


PRODUCT INFORMATION PACKET

marathon®
Motors

Model No: 449TSTFCD36005
Catalog No: 449TSTFCD36005
400,3600,TEFC,449TSC,3/60/460



Regal and Marathon are trademarks of Regal Rexnord Corporation or one of its affiliated companies.
©2023 Regal Rexnord Corporation, All Rights Reserved. MC017097E

RegalRexnord



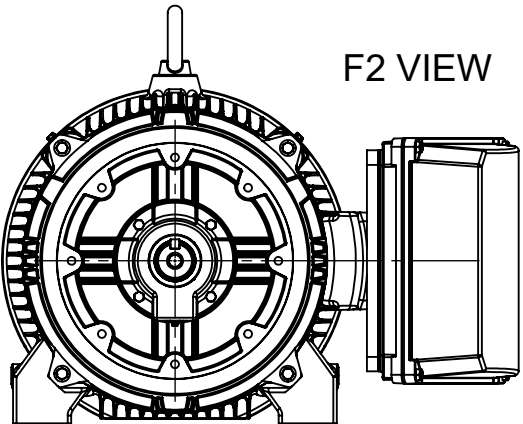
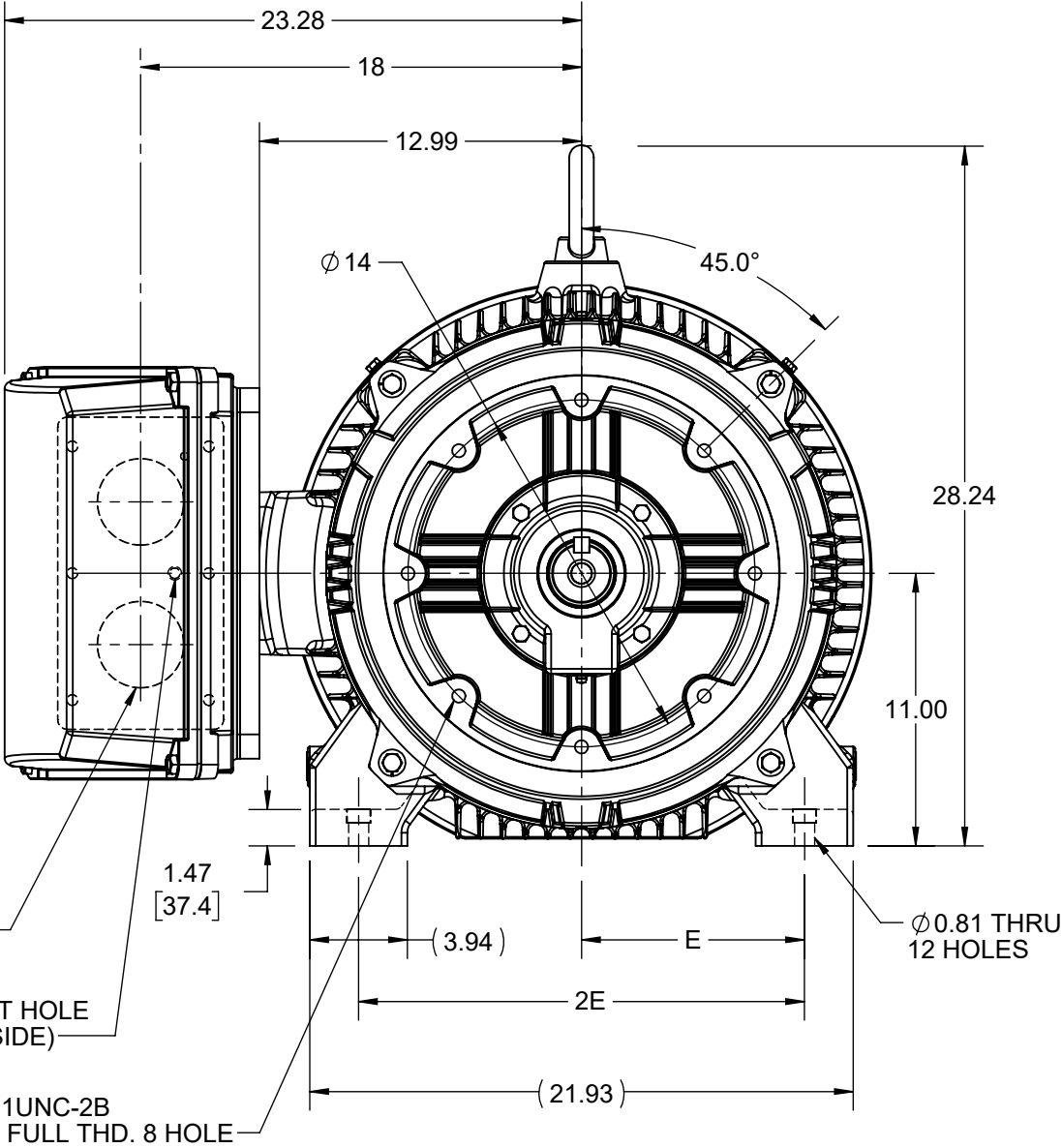
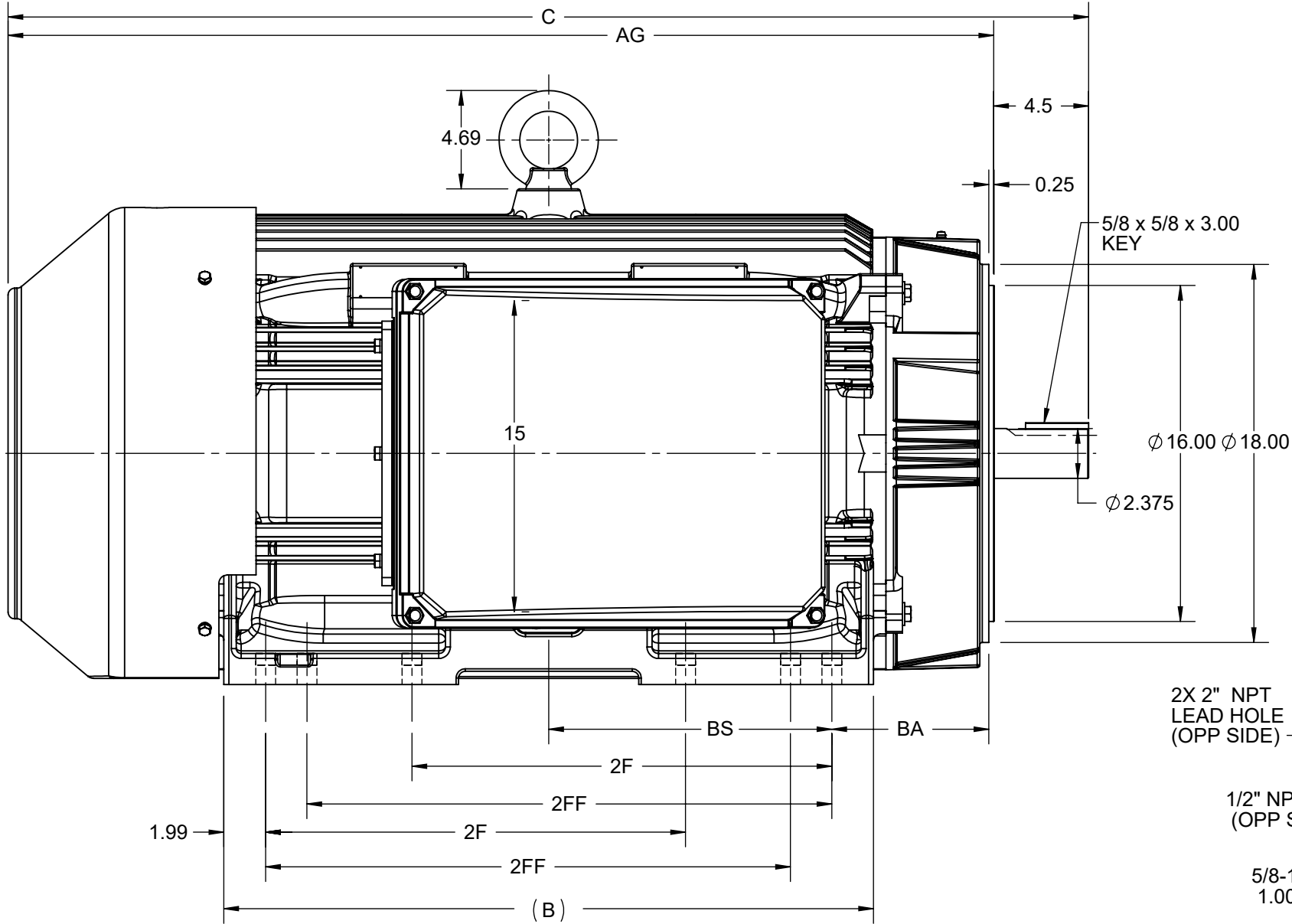
Nameplate Specifications

Technical Specifications

| | | | |
|-----------------|----------|--------------------|---------|
| Shaft Diameter | 2.375 in | | |
| Outline Drawing | SS621133 | Connection Drawing | EE7340C |

This is an uncontrolled document once printed or downloaded and is subject to change without notice. Date Created:04/24/2023

| 4 | | 3 | | | | | 2 | | 1 |
|-------|-------|----|------|-------|-------|-------|------|-------|----------|
| B | C | AG | E | 2E | 2F | 2FF | BA | BS | MOUNTING |
| 30.94 | 51.46 | 47 | 9.00 | 18.00 | 20.00 | 25.00 | 7.50 | 13.48 | F1 OR F2 |



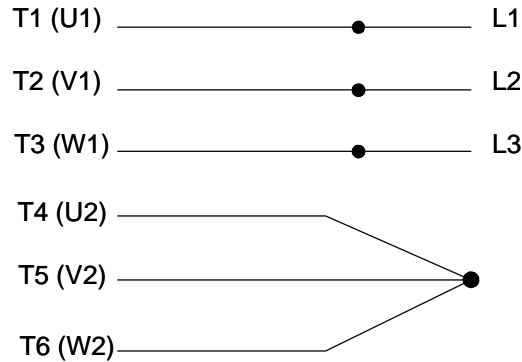
| | | |
|--|---------------------|-------------------------------|
| DRAWING REVISION A | REVISION BY Paul | REV DATE/© DATE 04/02/2021 |
| ECO NMR-0206884 | APPROVED BY Jay | DATE 04/02/2021 |
| ECO DESCRIPTION NEW DRAWING | | |
| COPYRIGHT (PER REVISION DATE) REGAL BELOIT AMERICA, INC. ALL RIGHTS RESERVED. PROPRIETARY AND CONFIDENTIAL INFORMATION - THIS DOCUMENT IS THE PROPERTY OF REGAL BELOIT AMERICA, INC. ("OWNER") AND CONTAINS OWNER'S PROPRIETARY INFORMATION. ANY PERSON, CORPORATION OR OTHER FIRM RECEIVING IT IS DEEMED, BY RECEIVING IT, TO AGREE THAT IT, AND/OR ANY PART OF IT, SHALL NOT BE DISCLOSED TO ANY PERSON, CORPORATION OR OTHER ENTITY, DUPLICATED, AND/OR USED, EXCEPT AS EXPRESSLY APPROVED IN WRITING IN ADVANCE BY OWNER. THIS DOCUMENT SHALL BE RETURNED TO OWNER UPON REQUEST. IT MAY BE SUBJECT TO CERTAIN RESTRICTIONS UNDER APPLICABLE EXPORT CONTROL LAWS AND REGULATIONS. | | |

PRIMARY DIMENSIONS ARE INCH
mm DIMENSIONS IN [BRACKETS]
ARE FOR REFERENCE ONLY

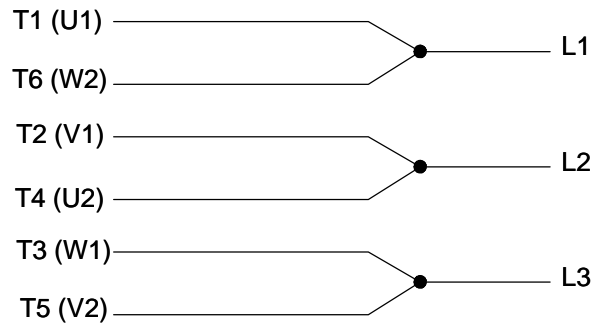
| | | |
|---------------------------|---|----------------------------|
| DRAWN BY Paul | <div> <div>REGAL</div> <div>Regal Beloit America, Inc.</div> </div> | |
| DATE 04/02/2021 | | |
| APPROVED BY Jay | DESCRIPTION OUTLINE | |
| DATE 04/02/2021 | 447/449TSC FR-TEFC - SPL T'BOX | |
| REFERENCE | MATERIAL | PROCESS/FINISH |
| THIRD ANGLE PROJECTION | SIZE B | DRAWING NUMBER SS621133 |
| | | SHEET 1 OF 1 |

THREE PHASE - Y START DELTA RUN MOTOR

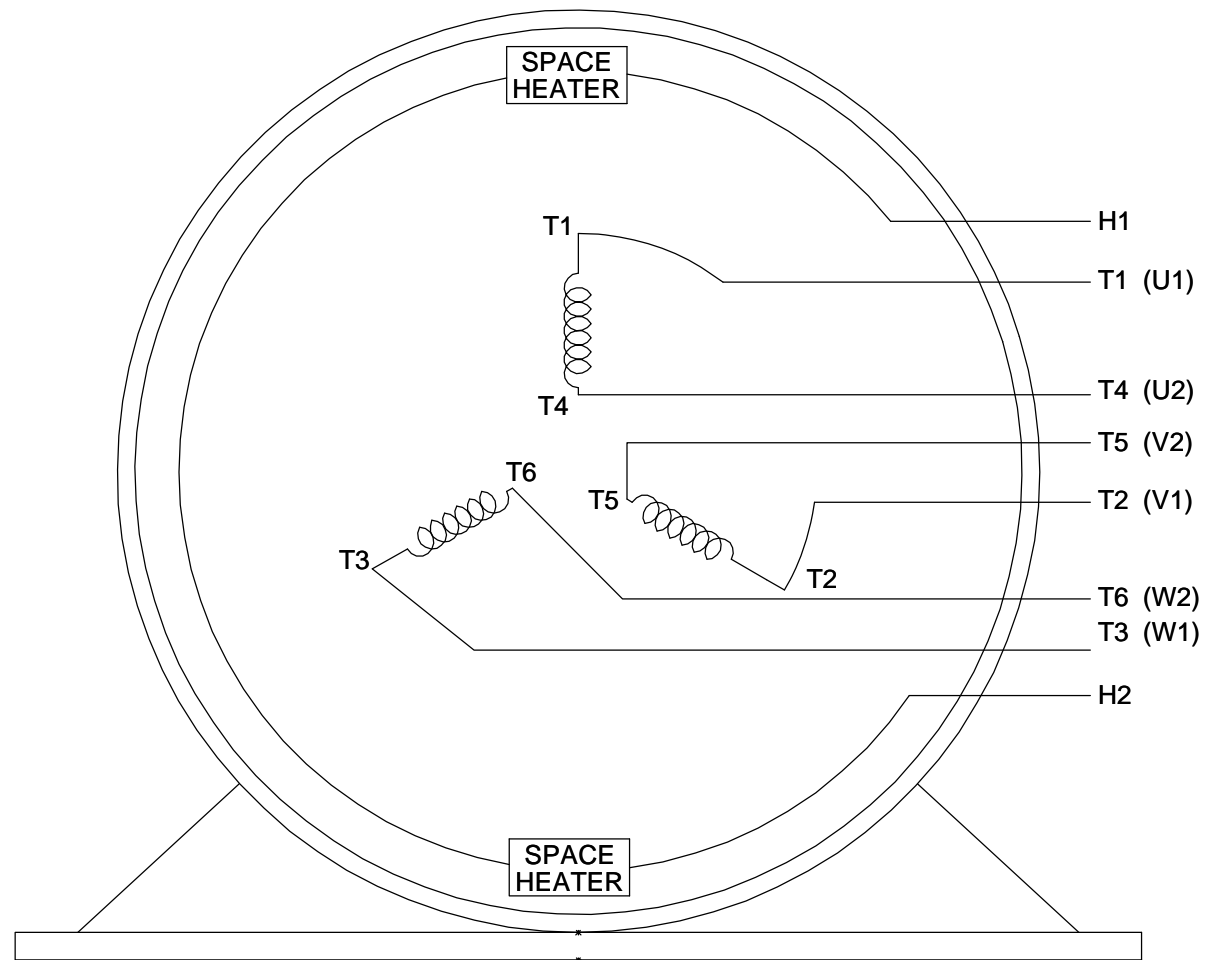
START



RUN



NOTE:
IEC LEAD MARKINGS ARE NOTED
IN PARANTHESES



VIEW OF TERMINAL END

| | | | | | | | |
|---|---------------------------|--------------------|-------------|---------------------------|---|----------------|---------------------------|
| DRAWING REVISION D | REVISION BY W. JOERGER | DATE 12-01-2017 | <div></div> | DRAWN BY MRB | <div><div>REGAL™</div>Regal Beloit America, Inc.</div> | | |
| ECO ECO-0135946 | APPROVED BY E. HEIL | DATE 12-01-2017 | | DATE 04-30-1998 | <div>DESCRIPTION</div> <div>CONN DIAGRAM-EXTERNAL</div> <div>SINGLE VOLTAGE - SPACE HEATERS</div> | | |
| ECO DESCRIPTION ADDED IEC LEAD MARKINGS | | | | APPROVED BY GK | | | |
| <div>COPYRIGHT REGAL BELOIT AMERICA, INC. ALL RIGHTS RESERVED. PROPRIETARY AND CONFIDENTIAL INFORMATION - THIS DOCUMENT IS THE PROPERTY OF REGAL BELOIT AMERICA, INC. ("OWNER") AND CONTAINS OWNER'S PROPRIETARY INFORMATION. ANY PERSON, CORPORATION OR OTHER FIRM RECEIVING IT IS DEEMED, BY RECEIVING IT, TO AGREE THAT IT, AND/OR ANY PART OF IT, SHALL NOT BE DISCLOSED TO ANY PERSON, CORPORATION OR OTHER ENTITY, DUPLICATED, AND/OR USED, EXCEPT AS EXPRESSLY APPROVED IN WRITING IN ADVANCE BY OWNER. THIS DOCUMENT SHALL BE RETURNED TO OWNER UPON REQUEST. IT MAY BE SUBJECT TO CERTAIN RESTRICTIONS UNDER APPLICABLE EXPORT CONTROL LAWS AND REGULATIONS.</div> | | | | DATE 04-30-1998 | | | |
| | | | | REFERENCE | MATERIAL | PROCESS/FINISH | |
| | | | | THIRD ANGLE PROJECTION | <div></div> | SIZE A | DRAWING NUMBER EE7340C |



P.O. BOX 8003
WAUSAU, WI 54401-8003
PH. 715-675-3311

DATA VOLTS: 460

CERTIFICATION DATA SHEET

CUSTOMER:
ORDER #:
CONN. DIAGRAM: EE7340C
OUTLINE: SS621133
WINDING: HA32802023 NONE 1
SPEED:

CUSTOMER P.O. #:
REFERENCE MODEL #: 449TSTFCD36005
CAT #: #VALUE!
CUSTOMER PART #:
MOUNTING: F1/F2 CAPABLE

TYPICAL MOTOR PERFORMANCE DATA

| HP | KW | SYNC RPM | FL RPM | FRAME | ENCLOSURE | TYPE | KVA CODE | DESIGN |
|-----|-----|----------|--------|------------|-----------|------|----------|--------|
| 400 | 298 | 3600 | 3579 | 447/449TSC | TEFC | TFC | G | B |

| PH | HZ | VOLTS | AMPS | START TYPE | DUTY | INSL | S.F. | AMB | ELEV. |
|----|----|-------|------|---------------------|------|------|------|-----|-------|
| 3 | 60 | 460 | 427 | WYE START DELTA RUN | CONT | F | 1.15 | 50 | 3300 |

| | | | | | | | |
|----------|------|------------|------|------------|------|---------|-----------------|
| F.L. EFF | 95.8 | 3/4 LD EFF | 95.9 | 1/2 LD EFF | 95.4 | GTD EFF | ELECT. TYPE |
| F.L. PF | 91.8 | 3/4 LD PF | 90.7 | 1/2 LD PF | 86.7 | 95.4 | SQ CAGE IND RUN |

| | | | | |
|-------------|-----------------|------------------|------------------|-----------------|
| F.L. TORQUE | LR AMPS @ 460 V | L.R. TORQUE | B.D. TORQUE | F.L. RISE (° C) |
| 587 LB-FT | 3,100 | 1,190 LB-FT 203% | 1,540 LB-FT 262% | 85 |

| | | | | | | | | |
|------------------------|--------|-------|--------------------------|---------------------------|-----------------|-------------|---------|-----------|
| SOUND PRESSURE @ 3 FT. | SOUND | POWER | ROTOR WK ² | MAX. LOAD WK ² | SAFE STALL TIME | STARTS/HOUR | APPROX. | MOTOR WGT |
| 80 dBA | 89 dBA | | 64.72 LB-FT ² | 100 LB-FT ² | 25 SEC. | 2 | 2775 | LB. |

*** SUPPLEMENTAL INFORMATION ***

| | | | | | | | | |
|-----------------|------------------|------------|-------------------|-------------|--------------------|------------|---------|--------------|
| DE BRACKET TYPE | ODE BRACKET TYPE | MOUNT TYPE | MOTOR ORIENTATION | SEVERE DUTY | HAZARDOUS LOCATION | DRIP COVER | SCREENS | PAINT |
| C-FACE | STANDARD | RIGID | HORIZONTAL | NO | NONE | YES | NONE | BLUE - TIGER |

| | | | | | | | |
|-----------|------------|------------|------------|-------------|-------------------------|----------|----------------|
| BEARINGS | GREASE | SHAFT TYPE | SPECIAL DE | SPECIAL ODE | SHAFT | MATERIAL | FRAME MATERIAL |
| DE ODE | | | | | | | |
| BALL BALL | POLYREX EM | TS | NONE | NONE | 1045 HOT ROLLED (C-204) | | CAST IRON |
| 6314 6314 | | | | | | | |

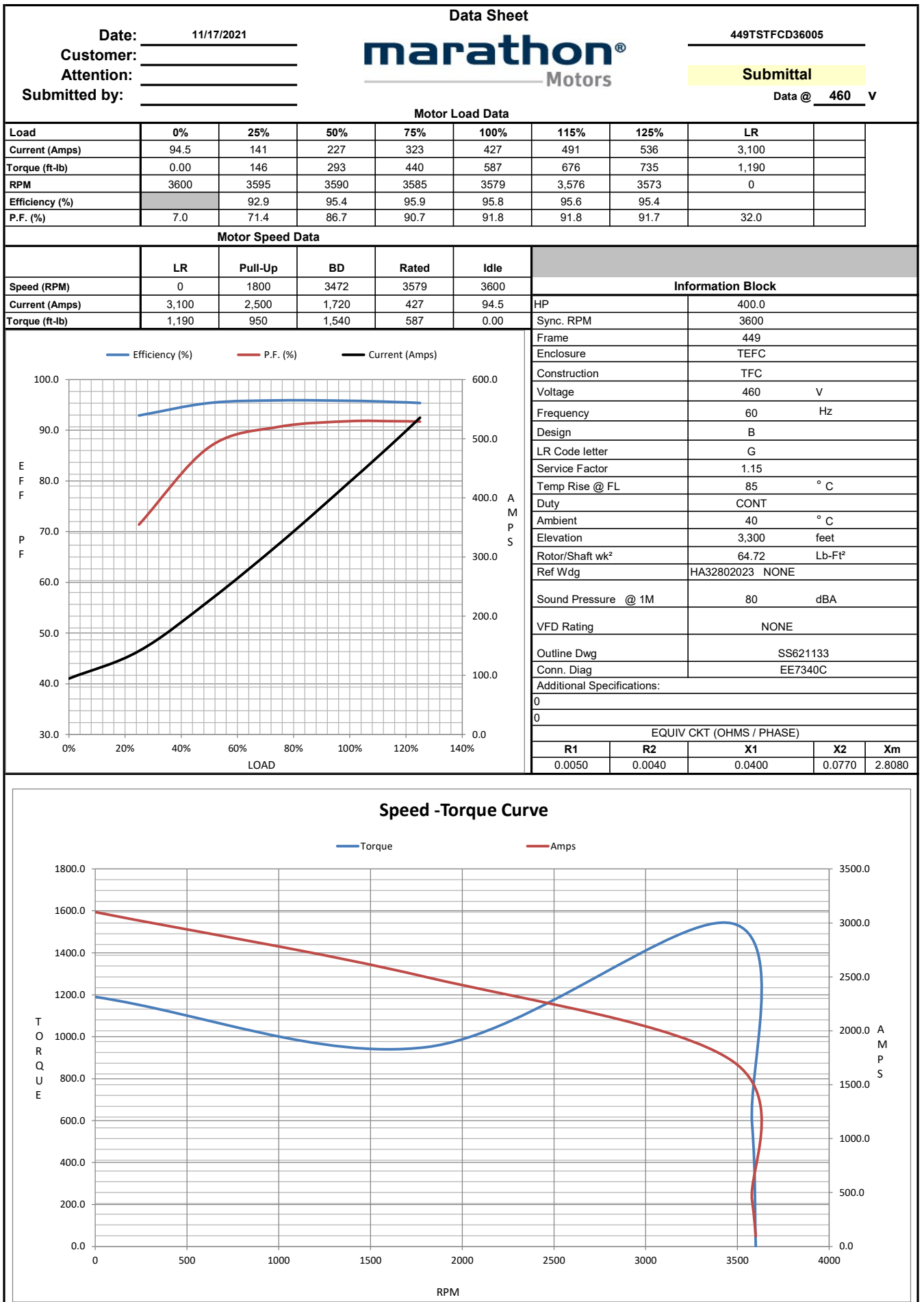
| | | | | | | | |
|-------------|------------|-----------|-----------|-------------|---------|-------|---------|
| THERMOSTATS | PROTECTORS | WDG RTD's | BRG RTD's | THERMISTORS | CONTROL | SPACE | HEATERS |
| NONE | NOT | NONE | NONE | NONE | FALSE | | 120V |

| | | | | | | |
|--------------|--------------|--------------|--------------|--------------|--------------------|-------|
| R1 (ohms/ph) | R2 (ohms/ph) | X1 (ohms/ph) | X2 (ohms/ph) | Xm (ohms/ph) | VIBRATION (in/sec) | FLOAT |
| 0.005 | 0.004 | 0.04 | 0.077 | 2.808 | 0.150 | ODE |

| | | |
|---------------------------------|--|--|
| * N O T E s * | INVERTER TORQUE: NONE INV. HP SPEED RANGE: NONE | |
| | ENCODER: NONE NONE NONE NONE PPR | |
| | BRAKE: NONE NONE NONE FT-LB: NA VOLTAGE: NONE HZ: | |
| | PREPARED BY: 11/17/2021 | |
| | DATE: 11/17/2021 | |

FORM: 3531 REV. 4 2/27/06

UL: V - LIME-INS.CONST UL REC



6 of 6