

# PRODUCT INFORMATION PACKET

Model No: 449TSHFS18504  
Catalog No: 449TSHFS18504  
270,4200,TEBC,449TS,3/70/460

Regal and are trademarks of Regal Rexnord Corporation or one of its affiliated companies.  
©2022 Regal Rexnord Corporation, All Rights Reserved. MC017097E



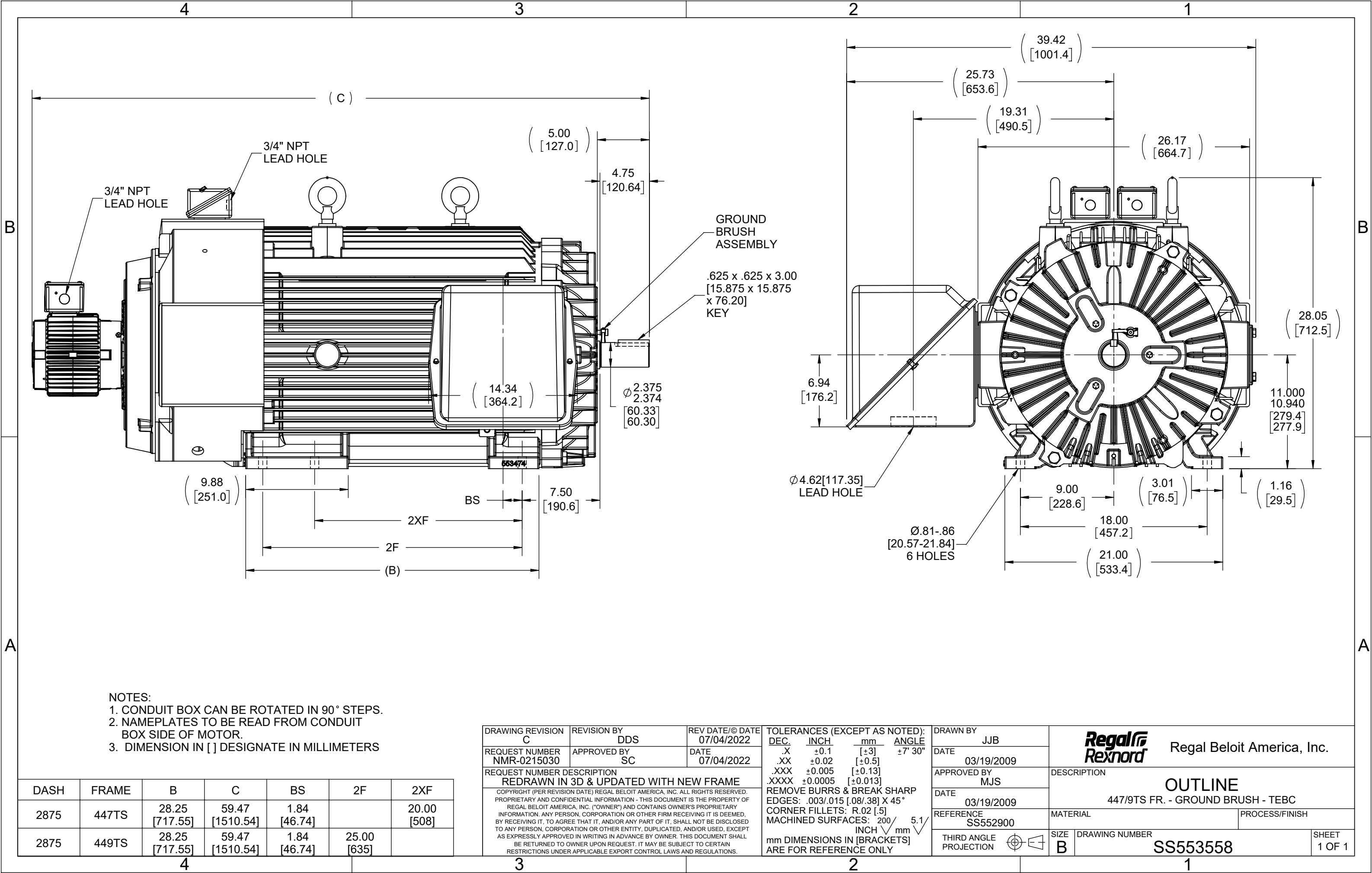
## Nameplate Specifications

|                        |            |                            |  |
|------------------------|------------|----------------------------|--|
| Output HP              | 270 Hp     | Output KW                  | 201.0 kW                               |
| Frequency              | 70 Hz      | Voltage                    | 460 V                                  |
| Current                | 290.0 A    | Speed                      | 4170 rpm                               |
| Service Factor         | 1          | Phase                      | 3                                      |
| Efficiency             | 96.2 %     | Power Factor               | 89                                     |
| Duty                   | Continuous | Insulation Class           | H                                      |
| Design Code            | A          | KVA Code                   | G                                      |
| Frame                  | 447/449TS  | Enclosure                  | Totally Enclosed Blower cooled - Axial |
| Thermal Protection     | Thermostat | Ambient Temperature        | 40 °C                                  |
| Drive End Bearing Size | 6313       | Opp Drive End Bearing Size | 6313                                   |
| UL                     | Recognized | CSA                        | Y                                      |
| CE                     | N          | IP Code                    | 55                                     |
| Number of Speeds       | 1          |                            |  |


## Technical Specifications

|                       |                             |                       |                 |
|-----------------------|-----------------------------|-----------------------|-----------------|
| Electrical Type       | Squirrel Cage Inverter Duty | Starting Method       | Inverter Only   |
| Poles                 | 2                           | Rotation              | Reversible      |
| Resistance Main       | .009 Ohms                   | Mounting              | Rigid Base      |
| Motor Orientation     | Horizontal                  | Drive End Bearing     | Ball            |
| Opp Drive End Bearing | Ball                        | Frame Material        | Cast Iron       |
| Shaft Type            | TS                          | Assembly/Box Mounting | F1/F2 CAPABLE   |
| Inverter Load         | VARIABLE 10:1               |                       |                 |
| Connection Drawing    | A-EE7300DE                  | Outline Drawing       | B-SS553558-2875 |

This is an uncontrolled document once printed or downloaded and is subject to change without notice. Date Created:10/13/2022

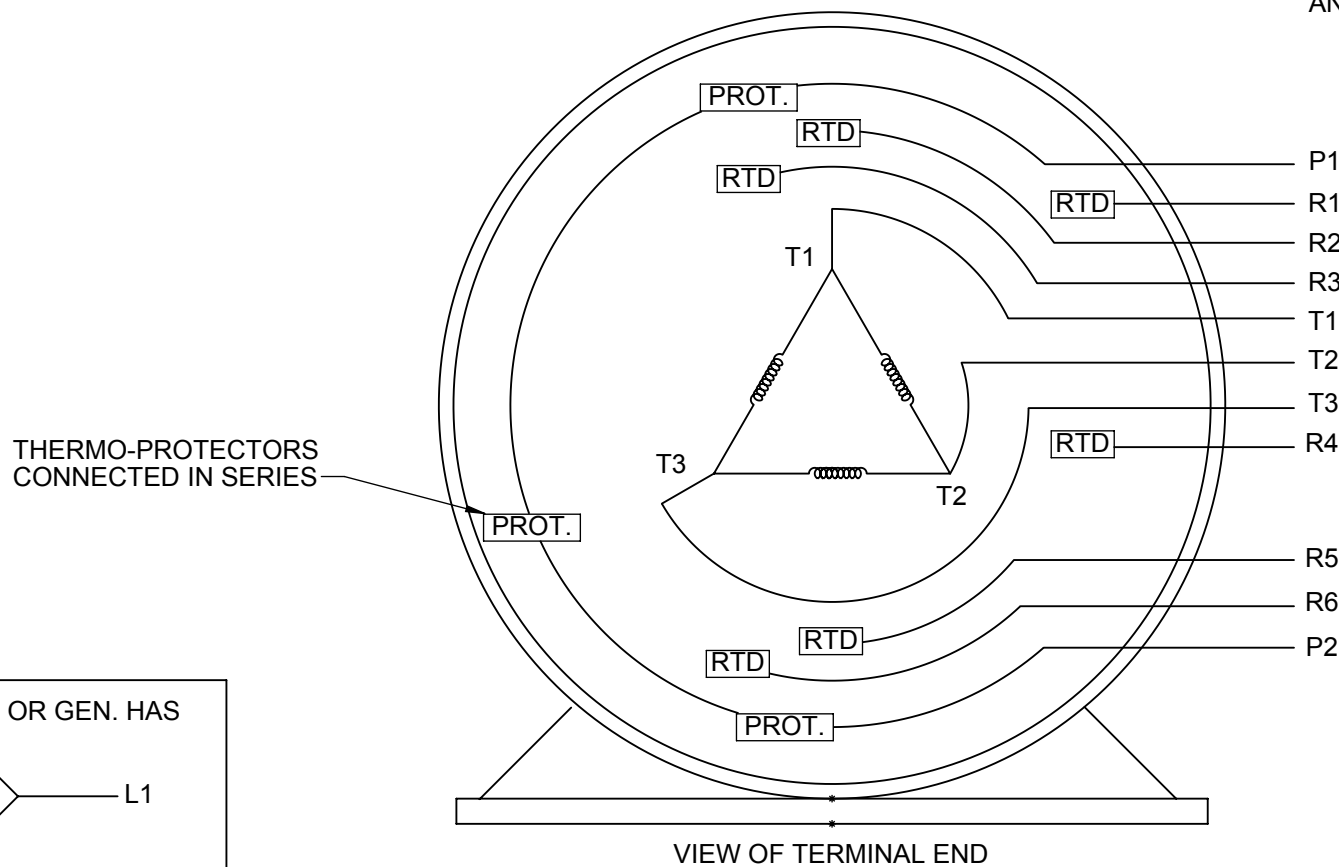


| DASH | FRAME | B                 | C                  | BS              | 2F             | 2XF            |
|------|-------|-------------------|--------------------|-----------------|----------------|----------------|
| 2875 | 447TS | 28.25<br>[717.55] | 59.47<br>[1510.54] | 1.84<br>[46.74] |                | 20.00<br>[508] |
| 2875 | 449TS | 28.25<br>[717.55] | 59.47<br>[1510.54] | 1.84<br>[46.74] | 25.00<br>[635] |                |

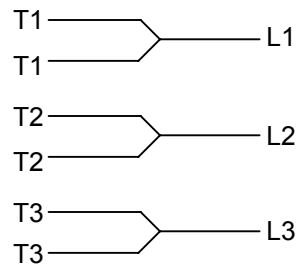
|  |                    |                               |   |  |  |  |                           |  |                            |                 |
|--|--------------------|-------------------------------|---|--|--|--|---------------------------|--|----------------------------|-----------------|
| DRAWING REVISION<br>C  | REVISION BY<br>DDS | REV DATE/© DATE<br>07/04/2022 | TOLERANCES (EXCEPT AS NOTED):<br>DEC. INCH mm ANGLE<br>.X ±0.1 [±3] ±7° 30"<br>.XX ±0.02 [±0.5]<br>.XXX ±0.005 [±0.13]<br>.XXXX ±0.0005 [±0.013]<br>REMOVE BURRS & BREAK SHARP<br>EDGES: .003/.015 [0.08/.38] X 45°<br>CORNER FILLETS: R.02 [.5]<br>MACHINED SURFACES: 200 INCH/mm 5.1<br>mm DIMENSIONS IN [BRACKETS]<br>ARE FOR REFERENCE ONLY |  |  |  | DRAWN BY<br>JJB           |  Regal Beloit America, Inc. |                            |                 |
| REQUEST NUMBER<br>NMR-0215030  | APPROVED BY<br>SC  | DATE<br>07/04/2022            |   |  |  |  | DATE<br>03/19/2009        |  |                            |                 |
| REQUEST NUMBER DESCRIPTION<br>REDRAWN IN 3D & UPDATED WITH NEW FRAME |                    |                               | DESCRIPTION<br>447/9TS FR. - GROUND BRUSH - TEBC  |  |  |  | APPROVED BY<br>MJS        |  |                            |                 |
|  |                    |                               | MATERIAL  |  |  |  | DATE<br>03/19/2009        |  |                            |                 |
|  |                    |                               | PROCESS/FINISH  |  |  |  | REFERENCE<br>SS552900     |  |                            |                 |
|  |                    |                               |   |  |  |  | THIRD ANGLE<br>PROJECTION | SIZE<br>B  | DRAWING NUMBER<br>SS553558 | SHEET<br>1 OF 1 |

THREE PHASE-SINGLE VOLTAGE MOTOR OR  
INDUCTION GENERATOR WITH 6 RTD'S MARKED  
R1 THRU R6 2 PROTECTOR LEADS MARKED P1 AND P2

TO REVERSE ROTATION: INTERCHANGE  
ANY TWO LINE LEAD CONNECTIONS.



IF MOTOR OR GEN. HAS  
6 LEADS



A-9806

DECAL

|  |                    |                    |   |           |                            |   |  |
|--|--------------------|--------------------|---|-----------|----------------------------|---|--|
| DRAWING REVISION<br>A  | REVISION BY<br>AJW | DATE<br>09-29-2014 | TOLERANCES UNLESS<br>OTHERWISE SPECIFIED:<br><div><div>DEC.</div><div>INCH</div><div>mm</div><div>ANGLE</div></div> <div><div>.X</div><div>±0.1</div><div>[±2.5]</div><div>±0.5°</div></div> <div><div>.XX</div><div>±0.01</div><div>[±0.25]</div></div> <div><div>XXX</div><div>±0.005</div><div>[±0.127]</div></div> <div><div>.XXXX</div><div>±0.0005</div><div>[±0.0127]</div></div> <div>REMOVE BURRS &amp; BREAK SHARP</div> <div>EDGES: .003/.015 [.076/.381]</div> <div>CORNER FILLETS: .02 [.51]</div> <div>MACHINED SURFACES: 125/3.2/INCH mm</div> <div>mm SHOWN IN [BRACKETS]</div> |           | DRAWN BY<br>DJK            | <div><div>REGAL™</div><div>Regal Beloit America, Inc.</div></div> |  |
| ECO<br>ECO-0061225   | APPROVED BY<br>EWH | DATE<br>09-29-2014 |   |           | DATE<br>12-10-1992         | DESCRIPTION<br>CONN DIAGRAM-INTERNAL<br>SINGLE VOLT-3Ø MOTOR      |  |
| ECO DESCRIPTION<br>UPDATED TO CURRENT STANDARDS  |                    |                    |   |           | APPROVED BY                |   |  |
| COPYRIGHT REGAL BELOIT AMERICA, INC. ALL RIGHTS RESERVED.<br>PROPRIETARY AND CONFIDENTIAL INFORMATION - THIS DOCUMENT IS THE PROPERTY OF<br>REGAL BELOIT AMERICA, INC. ("OWNER") AND CONTAINS OWNER'S PROPRIETARY<br>INFORMATION. ANY PERSON, CORPORATION OR OTHER FIRM RECEIVING IT IS DEEMED,<br>BY RECEIVING IT, TO AGREE THAT IT, AND/OR ANY PART OF IT, SHALL NOT BE DISCLOSED<br>TO ANY PERSON, CORPORATION OR OTHER ENTITY, DUPLICATED, AND/OR USED, EXCEPT<br>AS EXPRESSLY APPROVED IN WRITING IN ADVANCE BY OWNER. THIS DOCUMENT SHALL<br>BE RETURNED TO OWNER UPON REQUEST. IT MAY BE SUBJECT TO CERTAIN<br>RESTRICTIONS UNDER APPLICABLE EXPORT CONTROL LAWS AND REGULATIONS. |                    |                    |   |           | DATE                       | MATERIAL  |  |
|  |                    |                    | REFERENCE   | SIZE<br>A | DRAWING NUMBER<br>EE7300DE | SHEET<br>1 OF 1   |  |
|  |                    |                    | THIRD ANGLE<br>PROJECTION   |           |                            |   |  |