

PRODUCT INFORMATION PACKET

Model No: 449THFS14581
Catalog No: 449THFS14581
200,1200,TEFC,449T,3/60/480

Regal and are trademarks of Regal Rexnord Corporation or one of its affiliated companies.
©2022 Regal Rexnord Corporation, All Rights Reserved. MC017097E



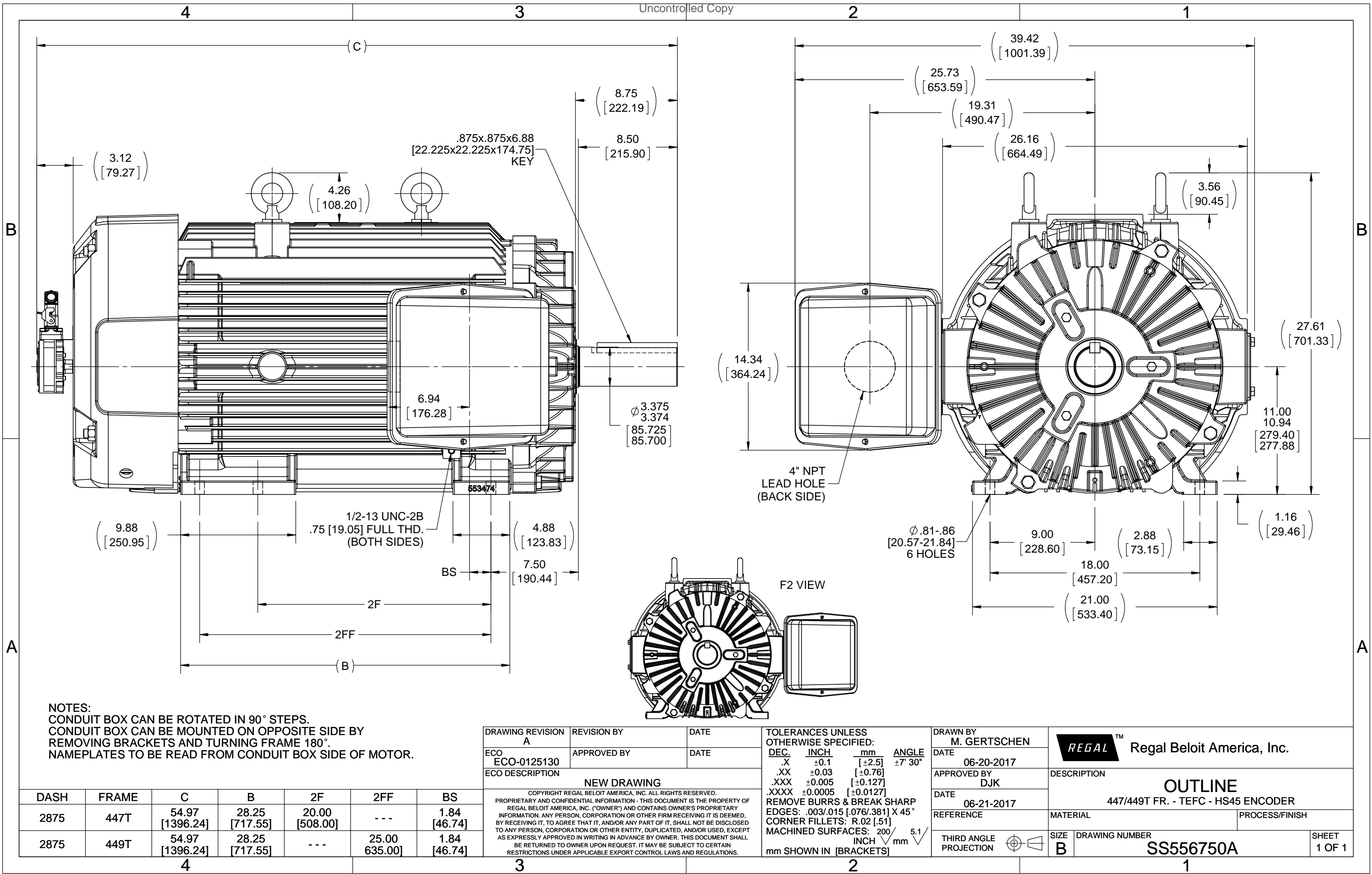
Nameplate Specifications

Output HP	200 Hp	Output KW	149.0 kW
Frequency	60 Hz	Voltage	480 V
Current	230.0 A	Speed	1190 rpm
Service Factor	1	Phase	3
Efficiency	95.4 %	Power Factor	81
Duty	Continuous	Insulation Class	H
Design Code	INV	KVA Code	J
Frame	447/449T	Enclosure	Totally Enclosed Fan Cooled
Thermal Protection	Thermostat	Ambient Temperature	40 °C
Drive End Bearing Size	6319	Opp Drive End Bearing Size	6318
UL	Recognized	CSA	Y
CE	Y	IP Code	56
Number of Speeds	1		

Technical Specifications

Electrical Type	Squirrel Cage Inverter Duty	Starting Method	Inverter Only
Poles	6	Rotation	Reversible
Resistance Main	.0145 Ohms	Mounting	Rigid Base
Motor Orientation	Horizontal	Drive End Bearing	Ball
Opp Drive End Bearing	Ball	Frame Material	Cast Iron
Shaft Type	T	Assembly/Box Mounting	F1/F2 CAPABLE
Inverter Load	CONSTANT 2000:1		
Connection Drawing	A-EE7300DM	Outline Drawing	B-SS556750A-2875

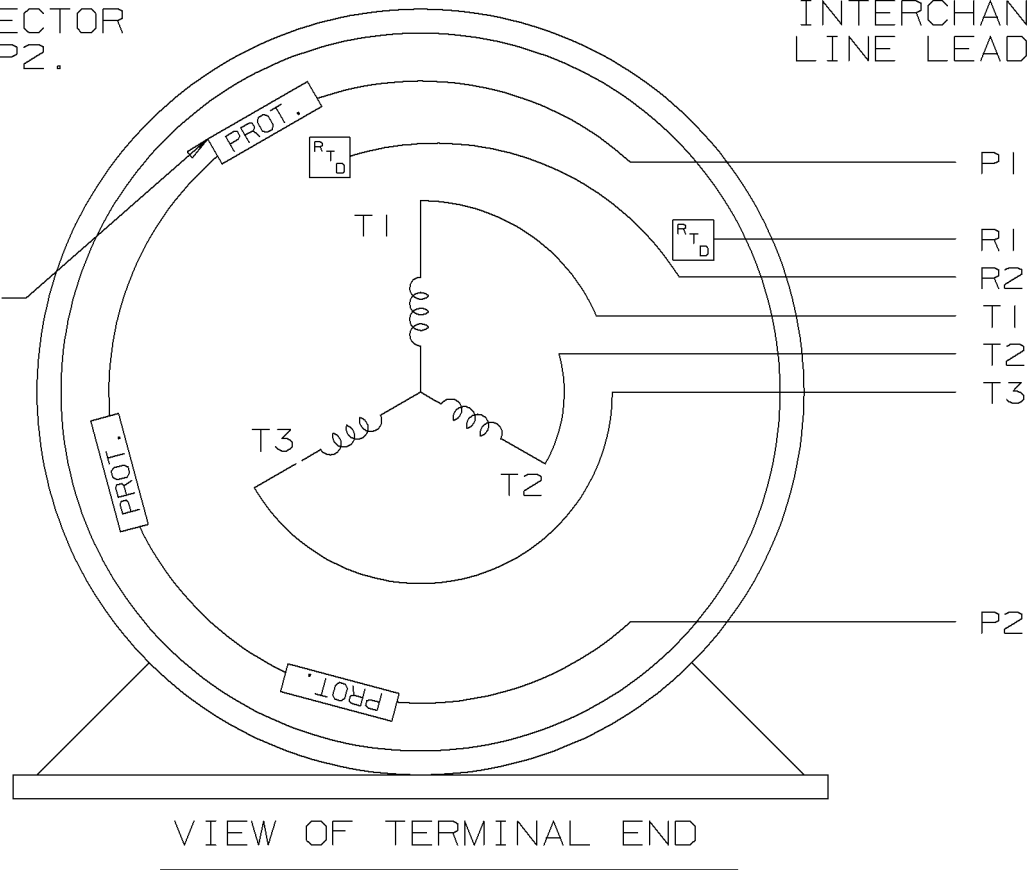
This is an uncontrolled document once printed or downloaded and is subject to change without notice. Date Created:09/02/2022



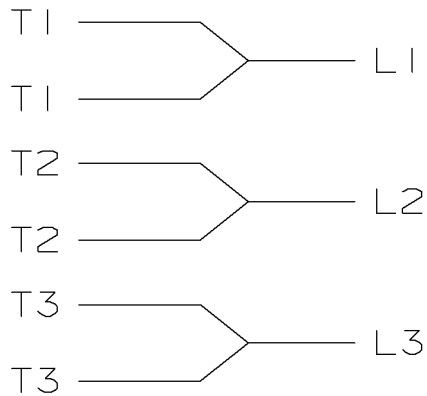
THREE PHASE - SINGLE VOLTAGE
MOTOR OR INDUCTION GENERATOR
WITH 2 RTD'S, 2 PROTECTOR
LEADS MARKED P1 AND P2.

TO REVERSE ROTATION:
INTERCHANGE ANY TWO
LINE LEAD CONNECTIONS.


THERMO-PROTECTORS
CONNECTED IN SERIES.



IF MOTOR OR GEN.
HAS 6 LEADS



A-9806 DECAL

				125 ✓ SURFACE ROUGHNESS UNLESS NOTED OTHERWISE	UNLESS OTHERWISE SPECIFIED DIMENSIONS ARE IN INCHES TOL ON XX±.02 XXX±.005 XXXX±.0005 ANGLES± 7°30"				
				MATL SPEC			DRAWN BY KL	08/25/93	
				FINISH	 WAUSAU, WISCONSIN 54401		CHKD BY		
I		NEW DRAWING	KL				APPD BY		
REV	DATE	CHANGE	NAME	PART NAME CONNECTION DIAGRAM SINGLE VOLT - 3Ø MOTOR				DRWG NO A - EE7300DM	
				CADD FILE NO			EE7300DM		