

PRODUCT INFORMATION PACKET

Model No: 449THFCD9061
Catalog No: W660A-P
400,1800,TEFC,449T,3/60/460

Regal and are trademarks of Regal Rexnord Corporation or one of its affiliated companies.
©2022 Regal Rexnord Corporation, All Rights Reserved. MC017097E



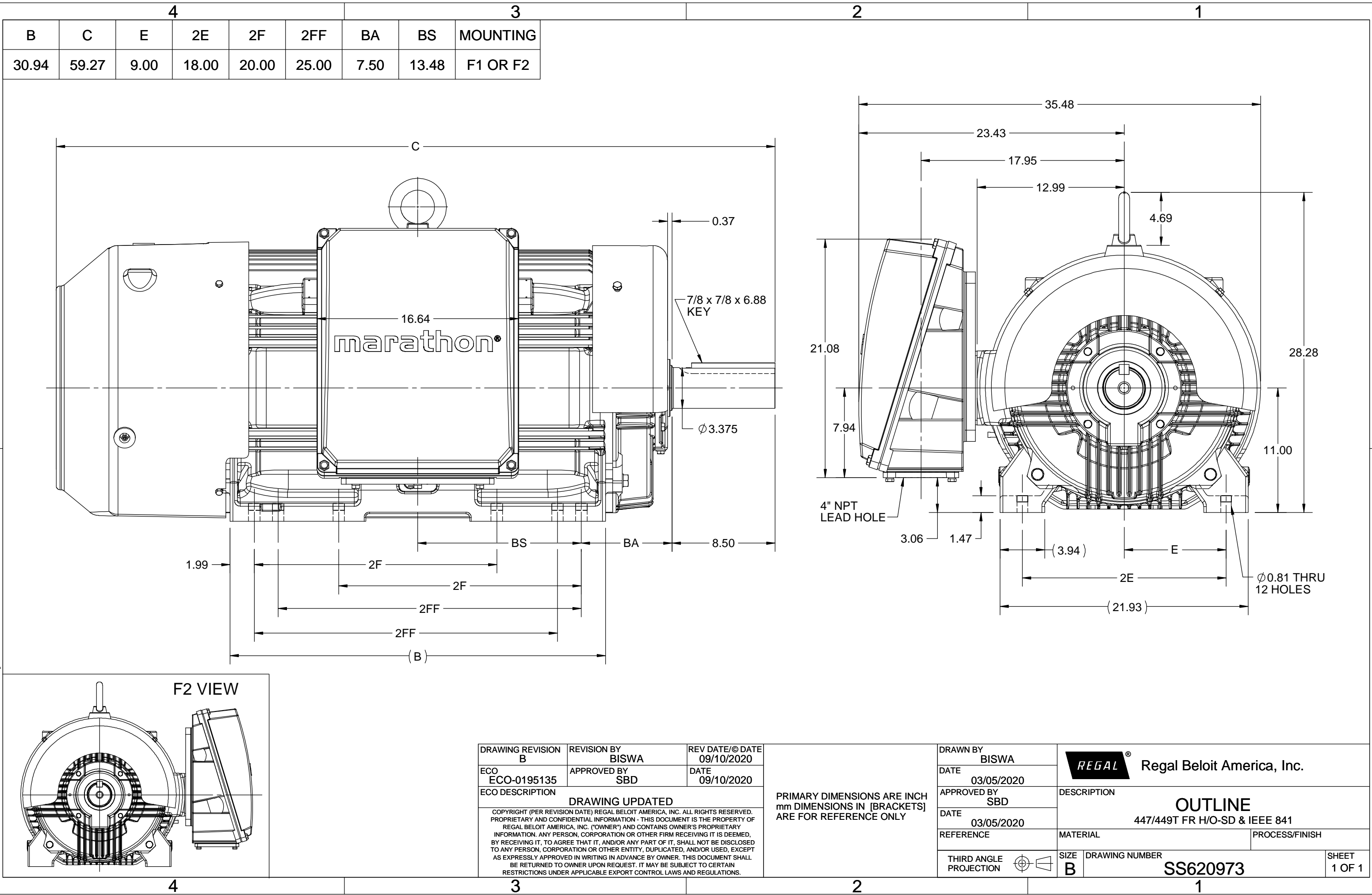
Nameplate Specifications

Output HP	400 Hp	Output KW	300.0 kW
Frequency	60 Hz	Voltage	460 V
Current	442.0 A	Speed	1788 rpm
Service Factor	1.15	Phase	3
Efficiency	96.2 %	Power Factor	88
Duty	Continuous	Insulation Class	H
Design Code	B	KVA Code	G
Frame	449T	Enclosure	Totally Enclosed Fan Cooled
Thermal Protection	No Protection	Ambient Temperature	40 °C
Drive End Bearing Size	6319	Opp Drive End Bearing Size	6317
UL	Recognized	CSA	Y
CE	Y	IP Code	56
Number of Speeds	1		

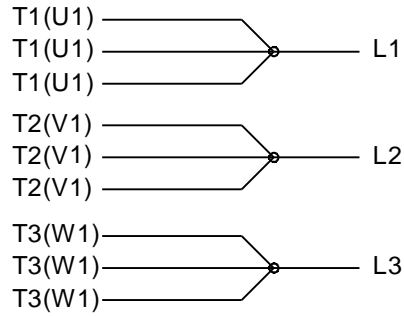
Technical Specifications

Electrical Type	Squirrel Cage Inverter Rated	Starting Method	Line Or Inverter
Poles	4	Rotation	Selective Clockwise
Resistance Main	.0095 Ohms	Mounting	Rigid Base
Motor Orientation	Horizontal	Drive End Bearing	Ball
Opp Drive End Bearing	Ball	Frame Material	Cast Iron
Shaft Type	T	Shaft Diameter	3.375 in
Assembly/Box Mounting	F1/F2 CAPABLE		
Outline Drawing	SS620973	Connection Drawing	EE7300U

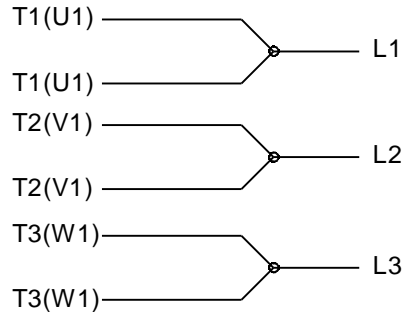
This is an uncontrolled document once printed or downloaded and is subject to change without notice. Date Created:09/05/2022



IF MOTOR HAS 9 LEADS

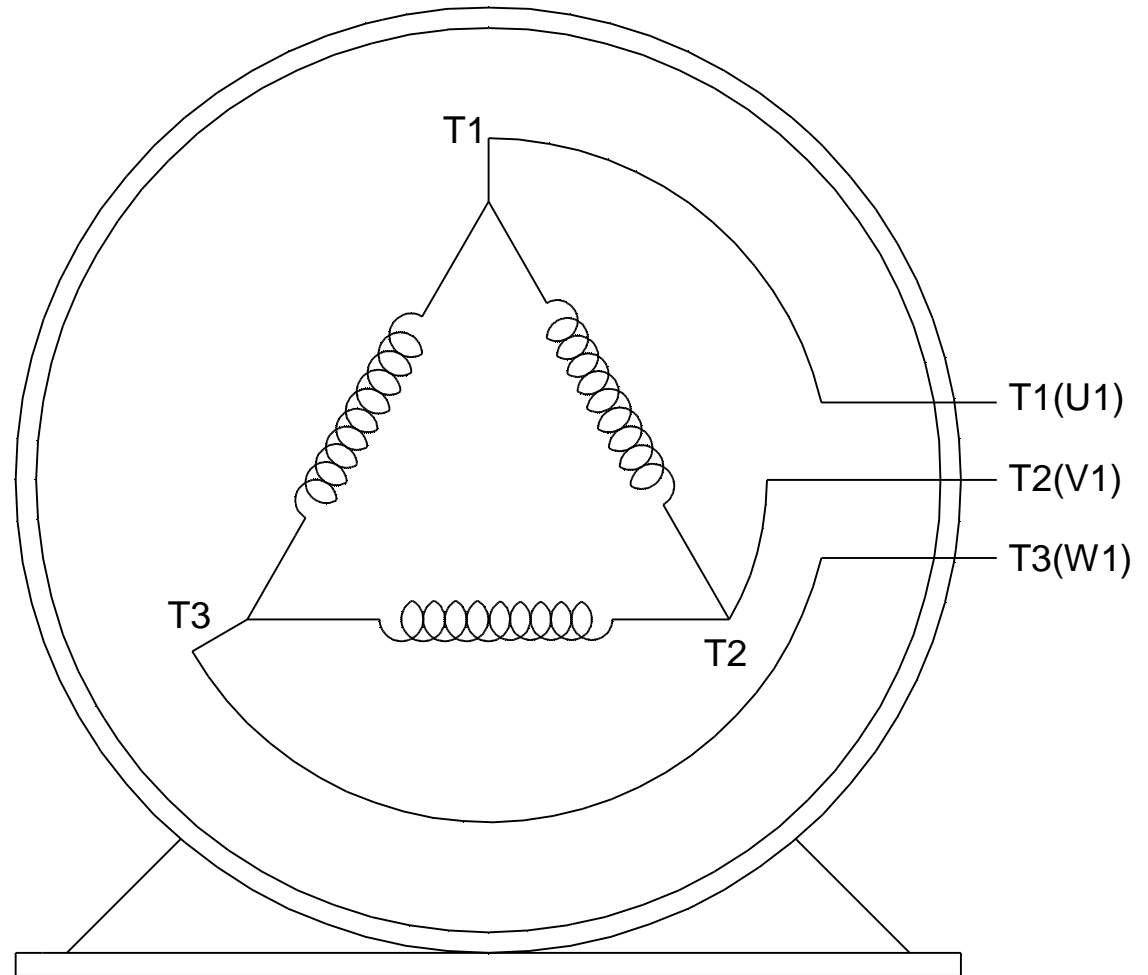
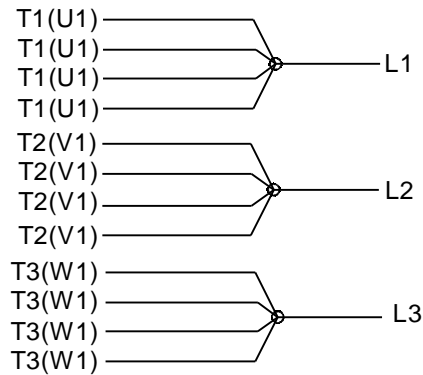


IF MOTOR HAS 6 LEADS

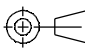


A-9806 DECAL IF CALLED FOR

IF MOTOR HAS 12 LEADS



VIEW OF TERMINAL END

DRAWING REVISION L	REVISION BY AJW	DATE 05-04-2015	TOLERANCES UNLESS OTHERWISE SPECIFIED: <div><div>DEC.</div><div>INCH</div><div>mm</div><div>ANGLE</div></div> <div><div>.X</div><div>±0.1</div><div>[±2.5]</div><div>±7° 30"</div></div> <div><div>.XX</div><div>±0.02</div><div>[±0.51]</div></div> <div><div>XXX</div><div>±0.005</div><div>[±0.127]</div></div> <div><div>.XXXX</div><div>±0.0005</div><div>[±0.0127]</div></div> <div>REMOVE BURRS & BREAK SHARP EDGES: .003/.015 [0.076/.381] X 45° CORNER FILLETS: R.02 [0.51] MACHINED SURFACES: 200^{INCH} 5.1^{mm} mm SHOWN IN [BRACKETS]</div>		DRAWN BY DRS	<div><div>REGAL™</div><div>Regal Beloit America, Inc.</div></div>	
ECO ECO-0077067	APPROVED BY EWH	DATE 05-05-2015			DATE 09-27-1996		
ECO DESCRIPTION UPDATED TO SOLIDWORKS			DESCRIPTION CONN DIAGRAM-EXTERNAL 3Ø SINDLE VOLTAGE				
<div><div>COPYRIGHT REGAL BELOIT AMERICA, INC. ALL RIGHTS RESERVED. PROPRIETARY AND CONFIDENTIAL INFORMATION - THIS DOCUMENT IS THE PROPERTY OF REGAL BELOIT AMERICA, INC. ("OWNER") AND CONTAINS OWNER'S PROPRIETARY INFORMATION. ANY PERSON, CORPORATION OR OTHER FIRM RECEIVING IT IS DEEMED, BY RECEIVING IT, TO AGREE THAT IT, AND/OR ANY PART OF IT, SHALL NOT BE DISCLOSED TO ANY PERSON, CORPORATION OR OTHER ENTITY, DUPLICATED, AND/OR USED, EXCEPT AS EXPRESSLY APPROVED IN WRITING IN ADVANCE BY OWNER. THIS DOCUMENT SHALL BE RETURNED TO OWNER UPON REQUEST. IT MAY BE SUBJECT TO CERTAIN RESTRICTIONS UNDER APPLICABLE EXPORT CONTROL LAWS AND REGULATIONS.</div></div>							APPROVED BY GK
			DATE 09-30-1996				
			REFERENCE	MATERIAL		PROCESS/FINISH	
			THIRD ANGLE PROJECTION		SIZE A	DRAWING NUMBER EE7300U	SHEET 1 OF 1



P.O. BOX 8003
WAUSAU, WI 54401-8003
PH. 715-675-3311

DATA VOLTS: 460

CERTIFICATION DATA SHEET

CUSTOMER: _____
ORDER #: _____
CONN. DIAGRAM: EE7300U
OUTLINE: SS620973
WINDING: HA32804032 NONE 1
SPEED: _____

CUSTOMER P.O. #: _____
REFERENCE MODEL #: 449THFCD9061
CAT #: W660A-P
CUSTOMER PART #: _____
MOUNTING: F1/F2 CAPABLE
FAN: 504205B

TYPICAL MOTOR PERFORMANCE DATA

HP	KW	SYNC RPM	FL RPM	FRAME	ENCLOSURE	TYPE	KVA CODE	DESIGN
400	298	1800	1788	447/449T	TEFC	TFC	G	B

PH	HZ	VOLTS	AMPS	START TYPE	DUTY	INSL	S.F.	AMB	ELEV.
3	60	460	442	LINE OR INVERTER	CONT	H	1.00	40	3300

F.L. EFF	96.2	3/4 LD EFF	96.5	1/2 LD EFF	96.4	GTD EFF	95.8	ELECT. TYPE	SQ CAGE INV RATED
F.L. PF	88.0	3/4 LD PF	86.9	1/2 LD PF	81.9				

F.L. TORQUE	1,175 LB-FT	LR AMPS @ 460 V	2,960	L.R. TORQUE	3,000 LB-FT	B.D. TORQUE	2,500 LB-FT	F.L. RISE (° C)	85
					255%		213%		

SOUND PRESSURE	85 dBA	SOUND	94 dBA	ROTOR WK²	132 LB-FT²	MAX. LOAD WK²	3000 LB-FT²	SAFE STALL TIME	20 SEC.	STARTS/HOUR	2	APROX. MOTOR	3300 LB.
----------------	--------	-------	--------	-----------	------------	---------------	-------------	-----------------	---------	-------------	---	--------------	----------

*** SUPPLEMENTAL INFORMATION ***

DE BRACKET TYPE	STANDARD	ODE BRACKET TYPE	STANDARD	MOUNT TYPE	RIGID	MOTOR ORIENTATION	HORIZONTAL	SEVERE DUTY	PREMIUM SEVERE DUTY	HAZARDOUS LOCATION	NONE	DRIP COVER	YES	SCREENS	NONE	PAINT	BLUE - RAL 5003 (EPOXY)
-----------------	----------	------------------	----------	------------	-------	-------------------	------------	-------------	---------------------	--------------------	------	------------	-----	---------	------	-------	-------------------------

BEARINGS	DE ODE	GREASE	POLYREX EM	SHAFT TYPE	T	SPECIAL DE	NONE	SPECIAL ODE	NONE	SHAFT MATERIAL	1045 HOT ROLLED (C-204)	FRAME MATERIAL	CAST IRON
	BALL BALL												
	6319 6317												

THERMOSTATS	NONE	PROTECTORS	NOT	WDG RTD's	NONE	BRG RTD's	NONE	THERMISTORS	NONE	CONTROL	FALSE	SPACE HEATERS	NA
-------------	------	------------	-----	-----------	------	-----------	------	-------------	------	---------	-------	---------------	----

R1 (ohms/ph)	0.006	R2 (ohms/ph)	0.004	X1 (ohms/ph)	0.042	X2 (ohms/ph)	0.113	Xm (ohms/ph)	2.375	VIBRATION (in/sec)	0.080	FLOAT	NONE
--------------	-------	--------------	-------	--------------	-------	--------------	-------	--------------	-------	--------------------	-------	-------	------

* N O T E S *		INVERTER TORQUE: CONSTANT 2:1/VARIABLE 10:1 INV. HP SPEED RANGE: NONE
	ENCODER: NONE NONE NONE	NONE PPR

PREPARED BY: _____ DATE: 8/11/2022	BRAKE: NONE NONE FT-LB: NA VOLTAGE: NONE UL: V - LI,ME-INS,CONST UL REC	NONE NONE HZ:
---------------------------------------	---	---------------------

FORM: 3531 REV_4 2/27/06