

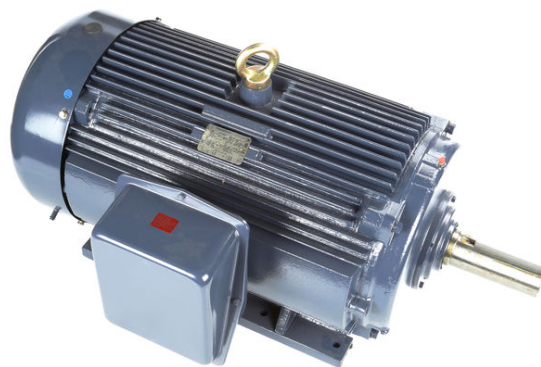
PRODUCT INFORMATION PACKET

marathon®
Motors

Model No: 447TTFC6087

Catalog No: GT1053

Globetrotter® General Purpose Motor, 150 & 125 HP, 3 Ph, 60 & 50 Hz, 460 & 380 V, 1200 & 1000 RPM,
447T Frame, TEFC



Regal and Marathon are trademarks of Regal Rexnord Corporation or one of its affiliated companies.

©2023 Regal Rexnord Corporation, All Rights Reserved. MC017097E

RegalRexnord

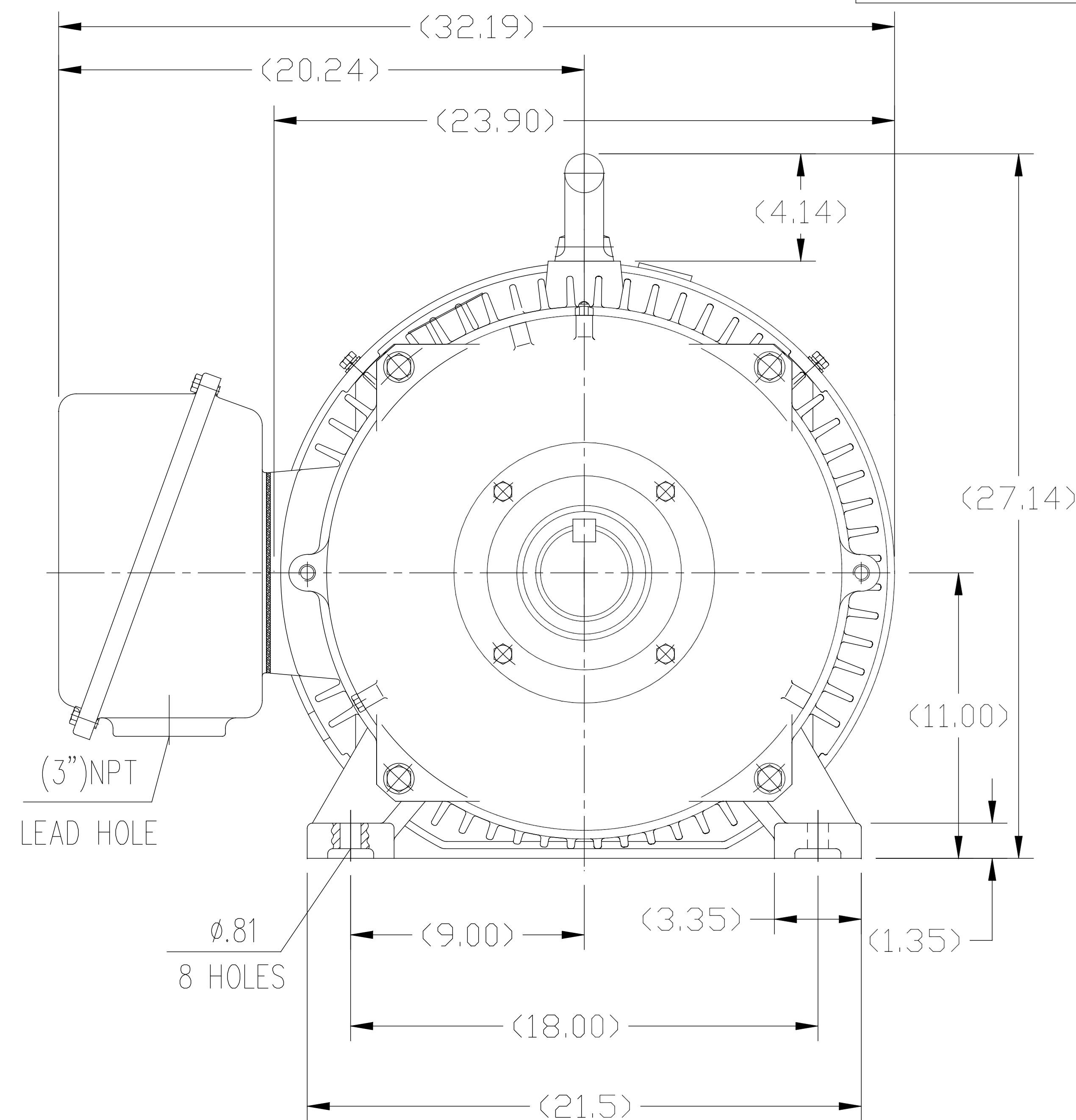
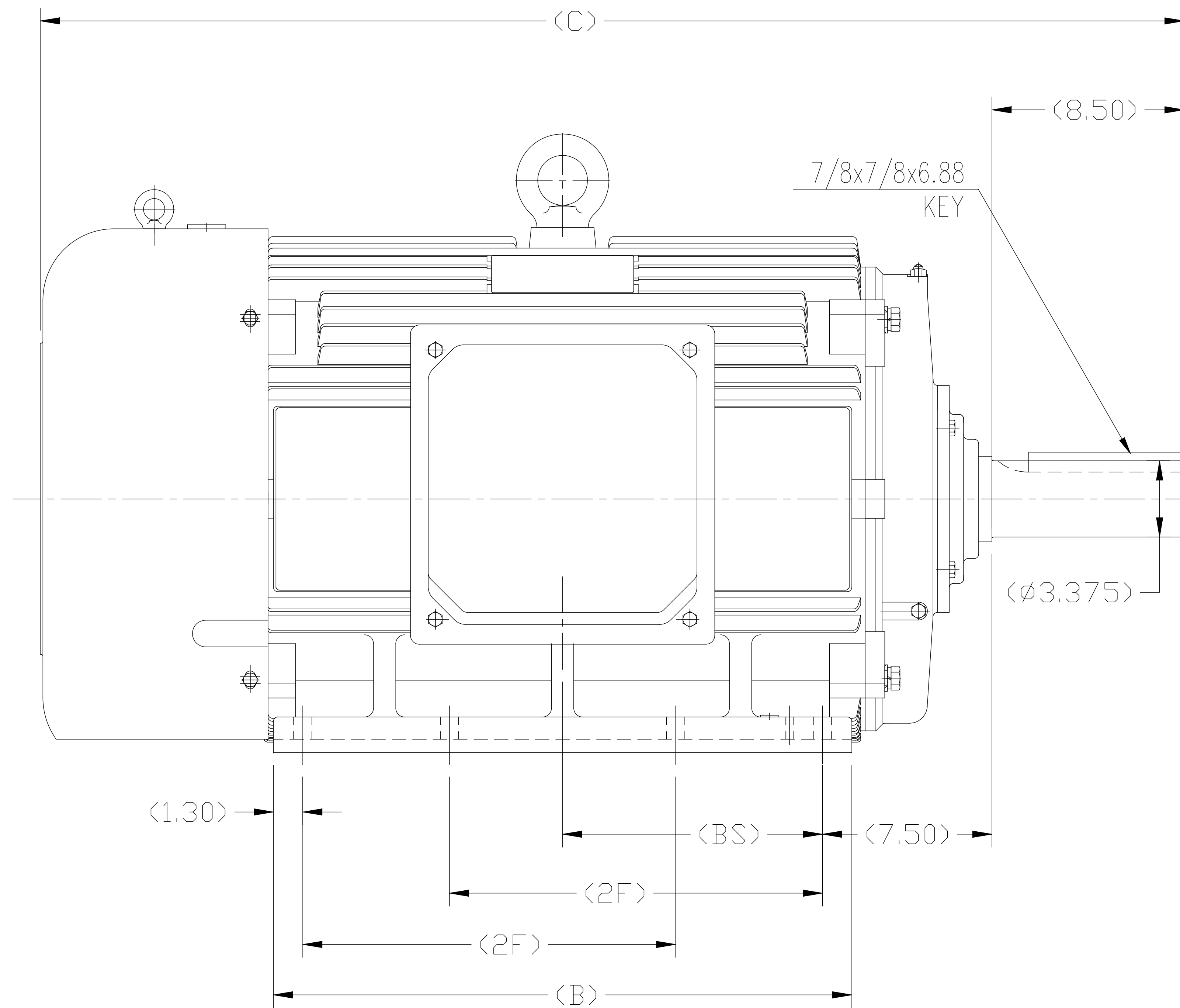
Nameplate Specifications

| | | | |
|------------------------|----------------------------|----------------------------|------------------------------------|
| Phase | 3 | Output HP | 150 & 125 Hp |
| Output KW | 112.0 & 93.0 kW | Voltage | 460 & 380 V |
| Speed | 1190 & 990 rpm | Service Factor | 1.15 & 1.15 |
| Frame | 447T | Enclosure | Totally Enclosed Fan Cooled |
| Thermal Protection | No Protection | Efficiency | 95.8 & 95.4 % |
| Ambient Temperature | 40 °C | Frequency | 60 & 50 Hz |
| Current | 170 & 172 A | Power Factor | 86.5 |
| Duty | Continuous | Insulation Class | F |
| Design Code | B | KVA Code | G |
| Drive End Bearing Size | 6319 | Opp Drive End Bearing Size | 6317 |
| UL | Recognized | CSA | Y |
| CE | Y | IP Code | 43 |
| Number of Speeds | 1 | | |

Technical Specifications

| | | | |
|-----------------------|-------------------------------------|--------------------|-----------------------------------|
| Electrical Type | Squirrel Cage Inverter Rated | Starting Method | Part Wdg Start Or Inverter |
| Poles | 6 | Rotation | Reversible |
| Resistance Main | .0223 Ohms | Mounting | Rigid Base |
| Motor Orientation | Horizontal | Drive End Bearing | Ball |
| Opp Drive End Bearing | Ball | Frame Material | Cast Iron |
| Shaft Type | T | Overall Length | 55.91 in |
| Shaft Diameter | 3.375 in | Shaft Extension | 8.5 in |
| Assembly/Box Mounting | F1/F2 CAPABLE | | |
| Outline Drawing | SS620287-447T | Connection Drawing | A-EE7341C |

SS620287



1. THIS MOTOR IS NOT DUAL DRILLED FOR 444T/445T OR 447T/449T
2. THIS MOTOR IS DRILLED FOR F1/F2 CAPABILITY

| | | | | |
|-------|-------|-------|-------|-------|
| 444T | 50.79 | 25.60 | 14.50 | 11.50 |
| 445T | 50.79 | 25.60 | 16.50 | 11.50 |
| 447T | 55.91 | 30.70 | 20.00 | 14.06 |
| 449T | 55.91 | 30.70 | 25.00 | --- |
| Frame | C | B | 2F | BS |

| | | TOLERANCES UNLESS SPECIFIED | | REGAL REGAL-BELOIT CORPORATION | | DRAWN ZYH 02-20-2010 | |
|--|---|-----------------------------|----------|--------------------------------|-------------------|----------------------|------------------------------------|
| | | DEC. | INCHES | | | CHK HZJ 02-20-2010 | |
| | | .X | ±.1 | | | APPD CL 02-20-2010 | |
| F | UPDATED DRAWING PER MARK-UP ECD-0108274 | WGJ | 7-10-16 | EMH | .XX | ±.03 | TITLE OUTLINE |
| B | ADDED 'BS' DIM. UPDATED TITLE BLOCK ECD-0048910 | RFH | 4-7-14 | EH | .XXX | ±.005 | 444/445/447/449T FR-TEFC-CAST IRON |
| A | 2 leads hole change to 1 | CL | 2010-9-8 | | .XXXX | ±.0005 | MAT'L. |
| NO. | REVISION | BY & DATE | CHK | ANG | ±1/2° | FINISH | FMF HWADA |
| THIS DRAWING IN DESIGN AND DETAIL IS OUR PROPERTY AND MUST NOT BE USED EXCEPT IN CONNECTION WITH OUR WORK ALL RIGHTS OF DESIGN AND INVENTION ARE RESERVED THIS IS AN ELECTRONICALLY GENERATED DOCUMENT - DO NOT SCALE THIS PRINT | | | | RFP | CAD FILE SS620287 | | SIZE DRAWING NO. |
| | | | | DIST | | | B SS620287 |
| | | | | | | REV. F | |

EE7341C

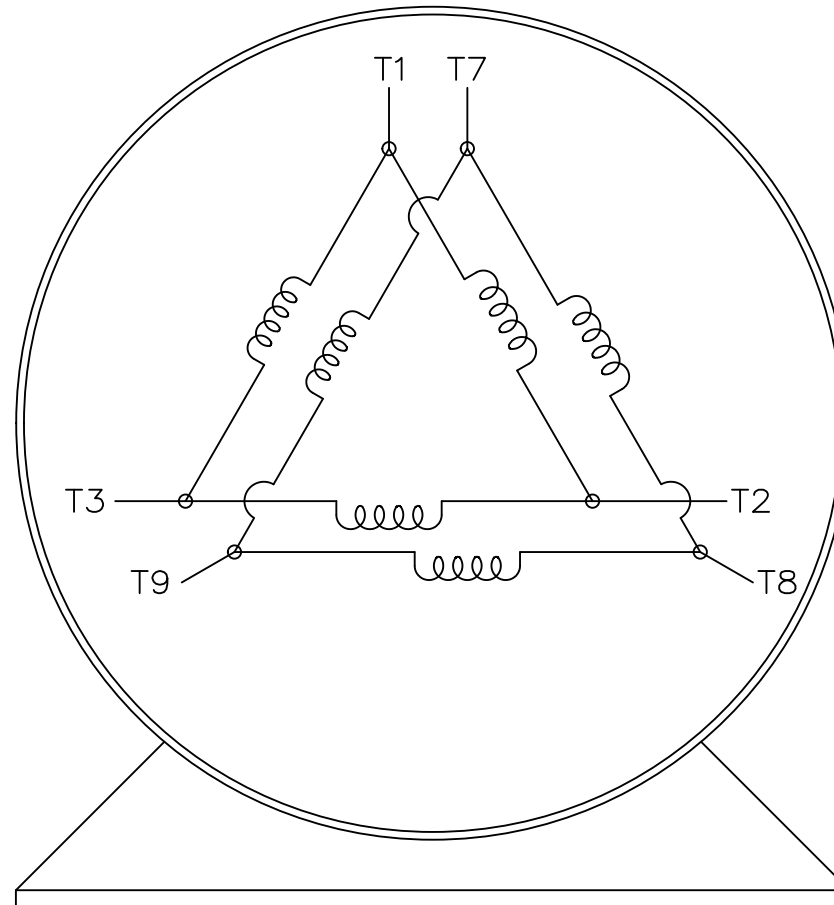
THREE PHASE – PART WINDING START
DELTA – 6 LEADS

START

CONNECT T1 TO LINE 1
CONNECT T2 TO LINE 2
CONNECT T3 TO LINE 3
T7-T8-T9 OPEN

RUN

CONNECT T1&T7 TO LINE 1
CONNECT T2&T8 TO LINE 2
CONNECT T3&T9 TO LINE 3



VIEW OF TERMINAL END

IF MOTOR HAS 2 T'S

START

CONNECT T1,T1 TO LINE 1
CONNECT T2,T2 TO LINE 2
CONNECT T3,T3 TO LINE 3
T7,T7-T8,T8-T9,T9 OPEN

RUN

CONNECT T1,T1&T7,T7 TO LINE 1
CONNECT T2,T2&T8,T8 TO LINE 2
CONNECT T3,T3&T9,T9 TO LINE 3

| | | TOLERANCES UNLESS SPECIFIED | | REGAL REGAL-BELOIT CORPORATION | | DRAWN | BLR | 03-09-1998 |
|--|--------------------------------------|-----------------------------|--------|--------------------------------|-----|--------------------|--------------------------|------------|
| | | DEC. | INCHES | | | CHK | ML | 03-23-1998 |
| | | .X | ± - | | | APPD | GK | 03-23-1998 |
| | | .XX | ± - | TITLE | | SCALE 1=1 | | |
| E | NOTE ADDED FOR 2 T'S | NAR 17-12-2020 | RC | .XXX | ± - | CONNECTION DIAGRAM | | REF |
| D | RE-DRAWN WITH REGAL LOGO ECO-0110493 | WGJ 09-30-2016 | EMH | .XXXX | ± - | 3ø - 6 LEADS | | FMF |
| NO. | REVISION | BY & DATE | CHK | ANG | ± - | FINISH | | PREV |
| THIS DRAWING IN DESIGN AND DETAIL IS OUR PROPERTY AND MUST NOT BE USED EXCEPT IN CONNECTION WITH OUR WORK ALL RIGHTS OF DESIGN AND INVENTION ARE RESERVED THIS IS AN ELECTRONICALLY GENERATED DOCUMENT - DO NOT SCALE THIS PRINT | | | RFP | CAD FILE EE7341C | | SIZE | DRAWING NO. PAGE OF REV. | |
| | | | DIST | | | A | EE7341C | E |

CERTIFICATION DATA SHEET

Model#: 447TTFC6087 AA
CONN. DIAGRAM: A-EE7341C
OUTLINE: B-SS620287

WINDING#: CHT44760001 NONE 2
ASSEMBLY: F1/F2 CAPABLE

TYPICAL MOTOR PERFORMANCE DATA

| HP | KW | SYNC. RPM | F.L. RPM | FRAME | ENCLOSURE | KVA CODE | DESIGN |
|---------|--------|-----------|----------|-------|-----------|----------|--------|
| 150&125 | 112&93 | 1200 | 1190&990 | 447T | TEFC | G | B |

| PH | Hz | VOLTS | FL AMPS | START TYPE | DUTY | INSL | S.F | AMB°C | ELEVATION |
|----|-------|---------|---------|-----------------|------------|------|-----------|-------|-----------|
| 3 | 60/50 | 460#380 | 170&172 | PWS OR INVERTER | CONTINUOUS | F7 | 1.15/1.15 | 40 | 3300 |

| FULL LOAD EFF: 95.8&95.4 | 3/4 LOAD EFF: 95.8 | 1/2 LOAD EFF: 95.4 | GTD. EFF | ELEC. TYPE | NO LOAD AMPS |
|-----------------------------|--------------------|--------------------|----------|-------------------|--------------|
| FULL LOAD PF: 86.5&87 | 3/4 LOAD PF: 83.8 | 1/2 LOAD PF: 77 | 95.4 | SQ CAGE INV RATED | 53 |

| F.L. TORQUE | LOCKED ROTOR AMPS | L.R. TORQUE | B.D. TORQUE | F.L. RISE°C |
|-------------|-------------------|----------------|----------------|-------------|
| 662 LB-FT | 1085 | 1192 LB-FT 180 | 1757 LB-FT 265 | 75 |

| SOUND PRESSURE @ 3 FT. | SOUND POWER | ROTOR WK^2 | MAX. WK^2 | SAFE STALL TIME | STARTS /HOUR | APPROX. MOTOR WGT |
|------------------------|-------------|-------------|-----------|-----------------|--------------|-------------------|
| 75 dBA | 85 dBA | 138 LB-FT^2 | - LB-FT^2 | 25 SEC. | - | 2975 LBS. |

***** SUPPLEMENTAL INFORMATION *****

| DE BRACKET TYPE | ODE BRACKET TYPE | MOUNT TYPE | ORIENTATION | SEVERE DUTY | HAZARDOUS LOCATION | DRIP COVER | SCREENS | PAINT |
|-----------------|------------------|------------|-------------|-------------|--------------------|------------|---------|---------------|
| STANDARD | STANDARD | RIGID | HORIZONTAL | FALSE | NONE | FALSE | NONE | BLUE (ENAMEL) |

| BEARINGS | | GREASE | SHAFT TYPE | SPECIAL DE | SPECIAL ODE | SHAFT MATERIAL | FRAME MATERIAL |
|----------|------|------------|------------|------------|-------------|-------------------------|----------------|
| DE | OPE | | | | | | |
| BALL | BALL | POLYREX EM | T | NONE | NONE | 1045 HOT ROLLED (C-204) | CAST IRON |
| 6319 | 6317 | | | | | | |

| THERMO-PROTECTORS | | | | THERMISTORS | CONTROL | SPACE /n HEATERS |
|-------------------|------------|----------|----------|-------------|---------|------------------|
| THERMOSTATS | PROTECTORS | WDG RTDs | BRG RTDs | | | |
| NONE | NOT | NONE | NONE | NONE | FALSE | NONE VOLTS |

If Inverter equals NONE, contact factory for further information

| |
|--------------------------------|
| INVERTER TORQUE: VARIABLE 10:1 |
| INV. HP SPEED RANGE: NONE |
| ENCODER: NONE |
| NONE NONE |
| NONE NONE PPR |
| BRAKE: NONE NONE |
| NONE P/N NONE |
| NONE NONE |
| NONE FT-LB NONE V NONE Hz |

*
N
O
T
E
S
*

DATE: 06/21/2017 06:34:21 AM
 FORM 3531 REV.3 02/07/99
 ** Subject to change without notice.

Data Sheet

Date: 15-06-2017
 Customer: _____
 Attention: _____
 Submitted by: FAREEDA DUDEKULA



447TFC6087

Submittal

Data @ 460 V

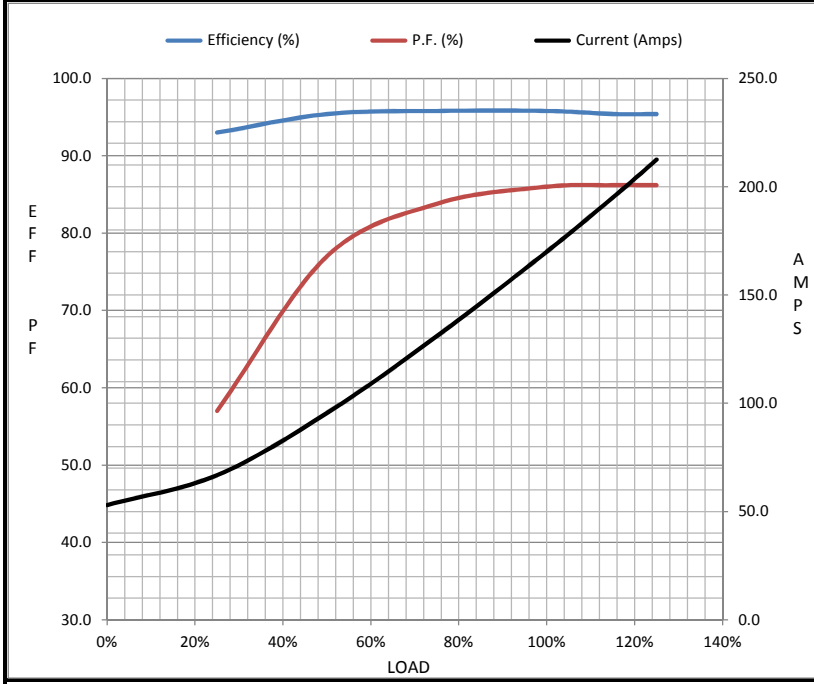
Motor Load Data

| Load | 0% | 25% | 50% | 75% | 100% | 115% | 125% | LR |
|----------------|------|------|------|------|------|-------|------|-------|
| Current (Amps) | 53.0 | 66.8 | 95.5 | 131 | 170 | 195 | 213 | 1,085 |
| Torque (ft-lb) | 0.00 | 165 | 330 | 495 | 662 | 760 | 830 | 1,192 |
| RPM | 1200 | 1198 | 1195 | 1192 | 1190 | 1,188 | 1188 | 0 |
| Efficiency (%) | | 93.0 | 95.4 | 95.8 | 95.8 | 95.4 | 95.4 | |
| P.F. (%) | 5.0 | 57.0 | 77.0 | 83.8 | 86.0 | 86.2 | 86.2 | 30.0 |

Motor Speed Data

| | LR | Pull-Up | BD | Rated | Idle |
|----------------|-------|---------|-------|-------|------|
| Speed (RPM) | 0 | 600 | 1158 | 1190 | 1200 |
| Current (Amps) | 1,085 | 870 | 612 | 170 | 53.0 |
| Torque (ft-lb) | 1,192 | 1,020 | 1,757 | 662 | 0.00 |

| Information Block | | | | |
|-----------------------------|------------------------|--------|--------|--------|
| HP | 150.0 | | | |
| Sync. RPM | 1200 | | | |
| Frame | 449 | | | |
| Enclosure | TEFC | | | |
| Construction | TFC | | | |
| Voltage | 460#380 V | | | |
| Frequency | 60 Hz | | | |
| Design | A | | | |
| LR Code letter | G | | | |
| Service Factor | 1.15 | | | |
| Temp Rise @ FL | 65 °C | | | |
| Duty | CONT | | | |
| Ambient | 40 °C | | | |
| Elevation | 1,000 feet | | | |
| Rotor/Shaft wk ² | 138 Lb-Ft ² | | | |
| Ref Wdg | CHT44760001 NONE | | | |
| Sound Pressure @ 1M | 75 dBA | | | |
| VFD Rating | VARIABLE 10:1 | | | |
| Outline Dwg | B-SS620287 | | | |
| Conn. Diag | A-EE7341C | | | |
| Additional Specifications: | | | | |
| 0 | | | | |
| 365THFS8036 | | | | |
| EQUIV CKT (OHMS / PHASE) | | | | |
| R1 | R2 | X1 | X2 | Xm |
| 0.0140 | 0.0130 | 0.1370 | 0.2270 | 4.9520 |



Speed - Torque Curve

