

PRODUCT INFORMATION PACKET

Model No: 447TTDN7087

Catalog No: H822

Other Purpose Motor, 250 HP, 3 Ph, 60 Hz, 460 V, 1200 RPM, 447T Frame, DP

Regal and are trademarks of Regal Rexnord Corporation or one of its affiliated companies.
©2022 Regal Rexnord Corporation, All Rights Reserved. MC017097E



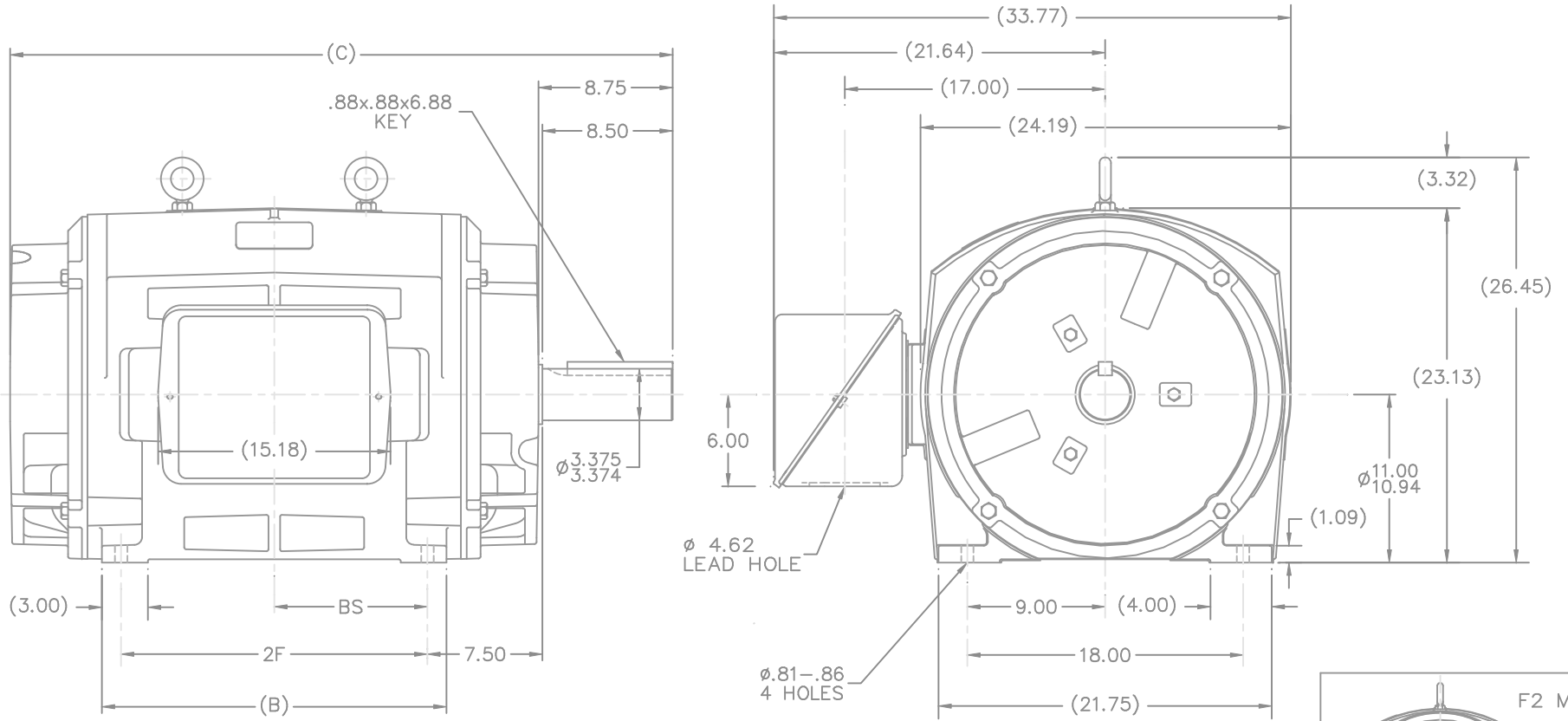
Nameplate Specifications

Output HP	250 Hp	Output KW	187.0 kW
Frequency	60 Hz	Voltage	460 V
Current	300.0 A	Speed	1185 rpm
Service Factor	1.15	Phase	3
Efficiency	94.5 %	Power Factor	82
Duty	Continuous	Insulation Class	F
Design Code	B	KVA Code	G
Frame	447T	Enclosure	Drip Proof
Thermal Protection	No Protection	Ambient Temperature	40 °C
Drive End Bearing Size	NU318	Opp Drive End Bearing Size	6314
UL	Recognized	CSA	Y
CE	N	IP Code	12
Number of Speeds	1		

Technical Specifications

Electrical Type	Squirrel Cage Induction Run	Starting Method	Part Wdg Start & Wye Start Delta Run
Poles	6	Rotation	Reversible
Resistance Main	.0185 Ohms	Mounting	Rigid Base
Motor Orientation	Horizontal	Drive End Bearing	Roller
Opp Drive End Bearing	Ball	Frame Material	Cast Iron
Shaft Type	T	Overall Length	43.25 in
Frame Length	24.38 in	Shaft Diameter	3.375 in
Shaft Extension	8.75 in	Assembly/Box Mounting	F1/F2 CAPABLE
Outline Drawing	B-SS514252-2438	Connection Drawing	A-EE7300BH

This is an uncontrolled document once printed or downloaded and is subject to change without notice. Date Created:09/07/2022



NOTES:

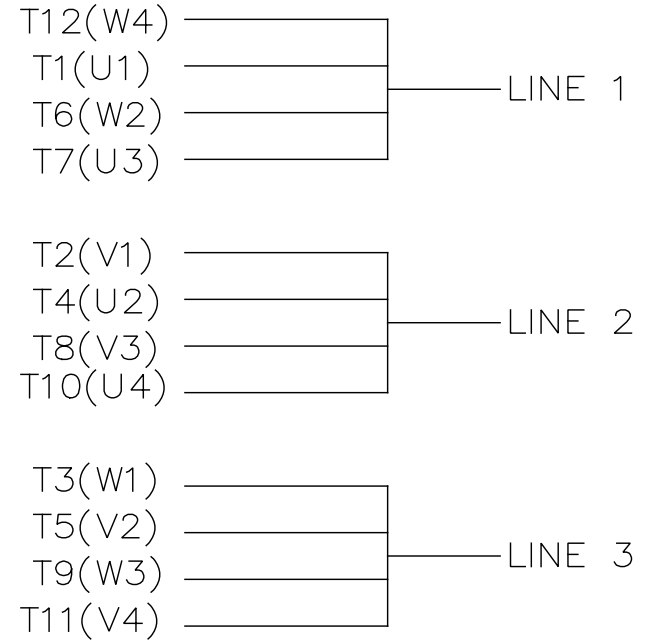
1. C.BOX CAN BE ROTATED IN 90° STEPS.
2. C.BOX CAN BE MOUNTED ON OPPOSITE SIDE BY REMOVING BRACKETS & TURNING FRAME 180°.
3. NAMEPLATES TO BE READ FROM CONDUIT BOX SIDE OF MOTOR.

2438	447T	43.25	---	22.50	20.00	---	---	10.00
2938	449T	48.25	---	27.50	25.00	---	---	12.50
DASH	FRAME	C	AG	B	2F	2FF	2FFF	BS

7	UPDATED DE BRACKET GEOMETRY	CN 35521	DRS		TO TOLERANCES UNLESS SPECIFIED					
6	ADDED F2 MOUNTING VIEW	CN 29200-263	DRS	03-24-2000	DEC.	INCHES				
5	ADDED OVERALL DIMENSIONS	CN 27400-627	BJW	01-17-2000	.X	±.1				
4	REVISED TO NEC CONDUIT BOX	CN 28405	BJW		.XX	±.03				
3	REMOVED 700 CU.IN. C'BOX NOTE	CN 16342	KL	10-07-1993	.XXX	±.005				
2	'C' DIM. WAS 43.19 & 48.19	CN 15854	JL	06-09-1993	.XXXX	±.0005				
NO.	REVISION		BY & DATE		CHK	ANG	±7'30"			
THIS DRAWING IN DESIGN AND DETAIL IS OUR PROPERTY AND MUST NOT BE USED EXCEPT IN CONNECTION WITH OUR WORK ALL RIGHTS OF DESIGN AND INVENTION ARE RESERVED THIS IS AN ELECTRONICALLY GENERATED DOCUMENT - DO NOT SCALE THIS PRINT					RFP					
					DIST	WA-SB				
								CAD FILE	SS514252	
								SIZE	B	
								DRAWING NO.	SS514252	
								PAGE	OF	7
								REV.		



TITLE OUTLINE - DR.PR.
447-449T FR.
MAT'L
PREV



VIEW OF TERMINAL END

				TOLERANCES UNLESS SPECIFIED		REGAL REGAL - BELOIT CORPORATION	DRAWN RJW 02-11-2005				
				DEC.	INCHES		CHK	ML	02-11-2005		
				.X	±.1		APPD	GK	02-11-2005		
				.XX	±.02	TITLE CONNECTION DIAGRAM		SCALE			
D	CHANGED TO REGAL TITLE BLOCK	ECO-0108299	WGJ 08/22/2016	EMH	.XXX ±.005	12 LEAD- SINGLE VOLTAGE		REF			
1	ADDED IEC TERMINAL MARKINGS	CN 41429	JJB 05/24/2007	ML	.XXXX ±.0005	MAT'L.		FMF			
NO.	REVISION	BY & DATE	CHK	ANG	±7'30"	FINISH		PREV			
THIS DRAWING IN DESIGN AND DETAIL IS OUR PROPERTY AND MUST NOT BE USED EXCEPT IN CONNECTION WITH OUR WORK ALL RIGHTS OF DESIGN AND INVENTION ARE RESERVED THIS IS AN ELECTRONICALLY GENERATED DOCUMENT - DO NOT SCALE THIS PRINT						RFP 02-11-2005	CAD FILE ee7300bh	SIZE A	DRAWING NO. EE7300BH	PAGE OF	REV. C
						DIST LB					