

PRODUCT INFORMATION PACKET

Model No: 447TTDN16046

Catalog No: U786

XRI® General Purpose General Purpose Motor, 250 HP, 3 Ph, 60 Hz, 460 V, 1800 RPM, 447T Frame, DP



Regal and Marathon are trademarks of Regal Rexnord Corporation or one of its affiliated companies.

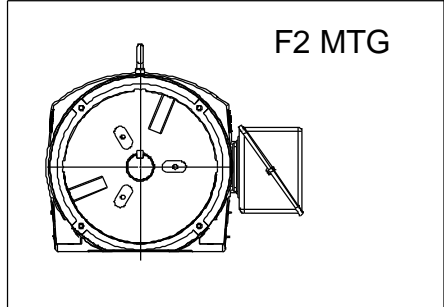
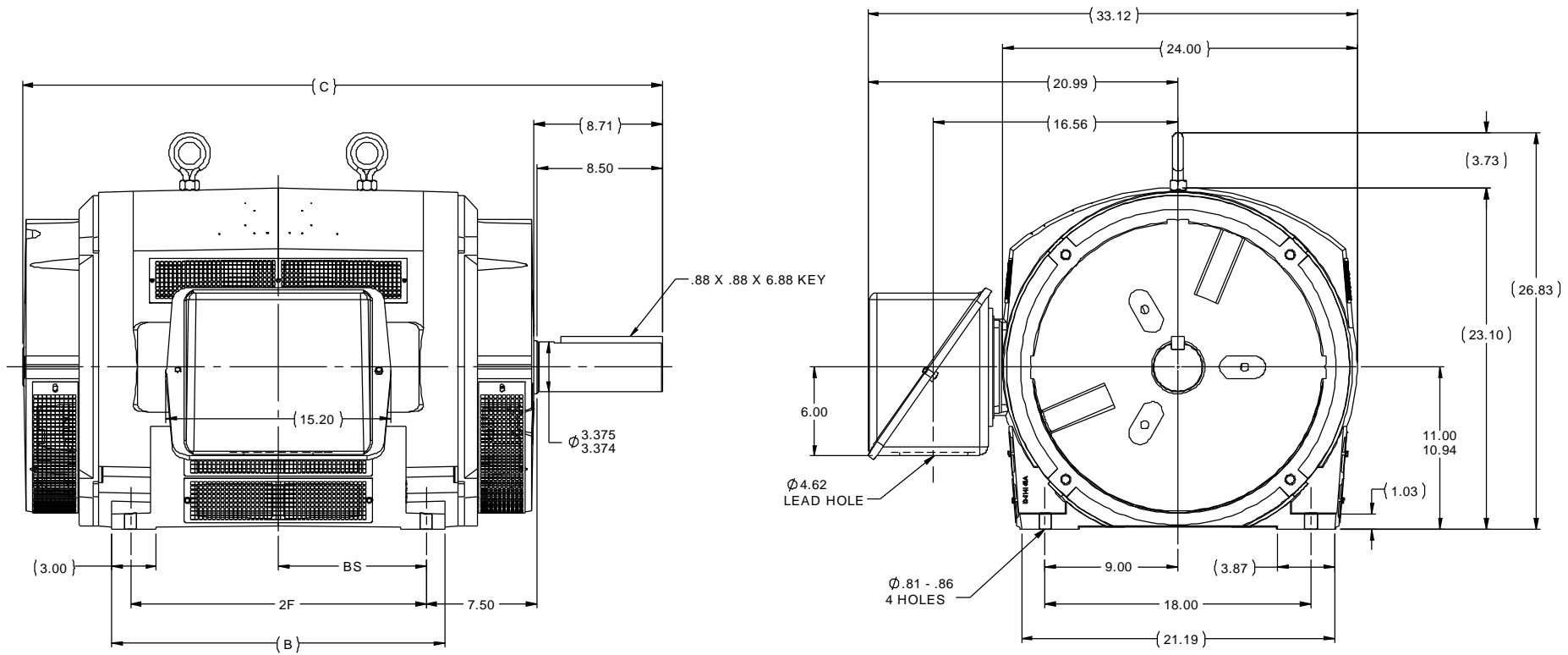
©2023 Regal Rexnord Corporation, All Rights Reserved. MC017097E

Nameplate Specifications

Phase	3	Output HP	250 Hp
Output KW	187.0 kW	Voltage	460 V
Speed	1782 rpm	Service Factor	1.15
Frame	447T	Enclosure	Drip Proof
Thermal Protection	Thermostat	Efficiency	95.8 %
Ambient Temperature	40 °C	Frequency	60 Hz
Current	284.0 A	Power Factor	86
Duty	Continuous	Insulation Class	F
Design Code	B	KVA Code	F
Drive End Bearing Size	6318	Opp Drive End Bearing Size	6314
UL	Recognized	CSA	Y
CE	Y	IP Code	12
Number of Speeds	1		

Technical Specifications

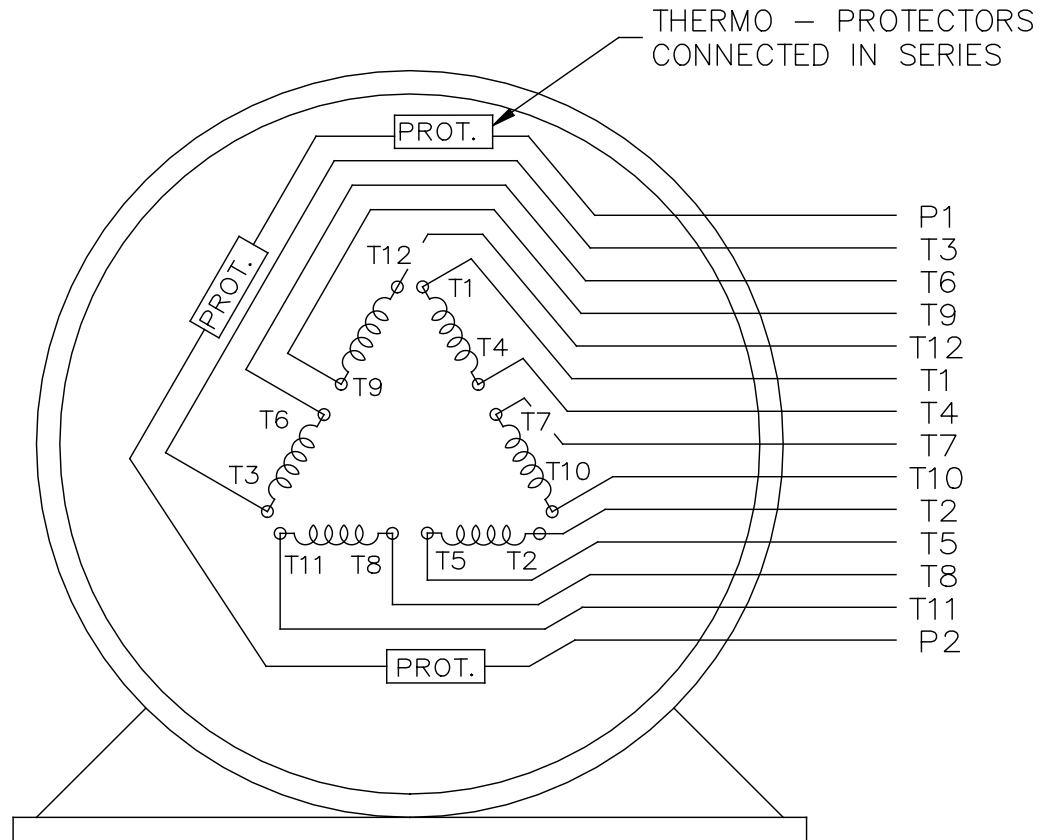
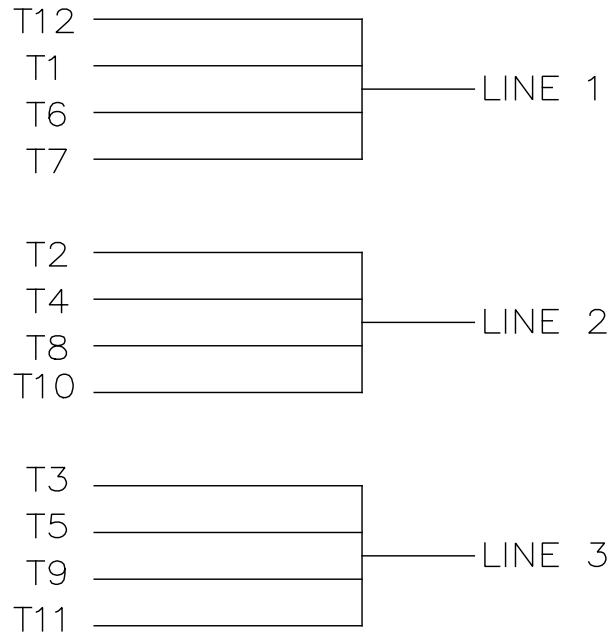
Electrical Type	Squirrel Cage Induction Run	Starting Method	Part Wdg Start & Wye Start Delta Run
Poles	4	Rotation	Reversible
Resistance Main	.017 Ohms	Mounting	Rigid Base
Motor Orientation	Horizontal	Drive End Bearing	Ball
Opp Drive End Bearing	Ball	Frame Material	Cast Iron
Shaft Type	T	Overall Length	43.25 in
Frame Length	24.38 in	Shaft Diameter	3.375 in
Shaft Extension	8.71 in	Assembly/Box Mounting	F1/F2 CAPABLE
Connection Drawing	A-EE7300CB	Outline Drawing	B-SS555884-2438



- NOTES:
1. CONDUIT BOX CAN BE ROTATED IN 90° STEPS
 2. CONDUIT BOX CAN BE MOUNTED ON OPPOSITE SIDE BY REMOVING BRACKETS AND TURNING FRAME 180°
 3. NAMEPLATES TO BE READ FROM CONDUIT BOX SIDE OF MOTOR

2438	447T	43.25	-----	22.50	20.00	-----	-----	10.00
2938	449T	48.25	-----	27.50	25.00	-----	-----	12.50
DASH	FRAME	C	AG	B	2F	2FF	2FFF	BS

TOLERANCES UNLESS SPECIFIED		REGAL Regal-Beloit Corporation	DRAWN WGJ 09-18-2013
DEC	INCHES		CHK DD 09-18-2013
X	±.1	TITLE OUTLINE - DR. PR. 447 - 449T FR.	APPR DK 09-18-2013
XX	±.03		SCALE 1:12
XXX	±.005		REF SS514867
XXXX	±.0005		FMF ECO-0038201
NO	REVISION	BY & DATE	PAGE OF
		CHK LANG ±7'30"	FINISH
		RFP 09-18-2013	PREV
		NETWORK FILE NAME SS555884	SIZE B
	THIRD ANGLE PROJECTION		DRAWING NO SS555884
			REV



VIEW OF TERMINAL END

				TOLERANCES UNLESS SPECIFIED		REGAL REGAL - BELOIT CORPORATION	DRAWN KL 02-27-2003				
				DEC.	INCHES		CHK GFH 03-03-2003				
				.X	± -		APPD JES 03-03-2003				
				.XX	± -	TITLE CONNECTION DIAGRAM - EXTERNAL	SCALE 1=1				
				.XXX	± -	12 LEAD SINGLE VOLTAGE	REF				
A	CHANGED TO REGAL TITLEBLOCK ECO-0108299	WGJ 08-18-2016	EMH	.XXXX	± -	MAT'L.	FMF				
NO.	REVISION	BY & DATE	CHK	ANG	± -	FINISH	PREV				
THIS DRAWING IN DESIGN AND DETAIL IS OUR PROPERTY AND MUST NOT BE USED EXCEPT IN CONNECTION WITH OUR WORK ALL RIGHTS OF DESIGN AND INVENTION ARE RESERVED THIS IS AN ELECTRONICALLY GENERATED DOCUMENT - DO NOT SCALE THIS PRINT						RFP	CAD FILE EE7300CB	SIZE A	DRAWING NO. EE7300CB	PAGE OF	REV.
						DIST					

Data Sheet

Date: 29-06-2017
Customer: _____
Attention: _____
Submitted by: FAREEDA DUDEKULA



447TTDN16046

Submittal

Data @ **460 V**

Motor Load Data

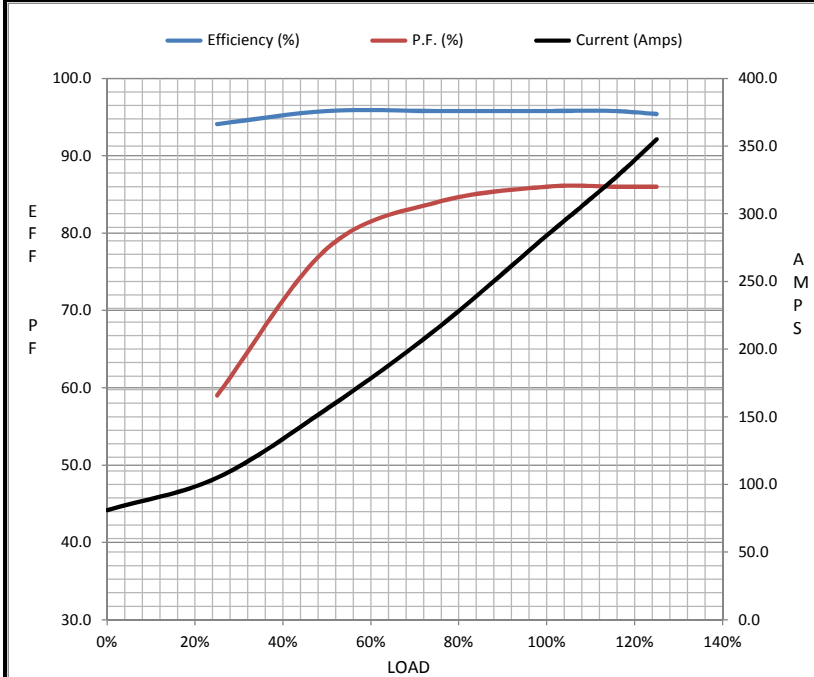
Load	0%	25%	50%	75%	100%	115%	125%	LR
Current (Amps)	81.0	105	156	215	284	325	355	1,650
Torque (ft-lb)	0.00	183	366	551	736	848	925	1,325
RPM	1800	1796	1792	1788	1782	1,780	1778	0
Efficiency (%)		94.1	95.8	95.8	95.8	95.8	95.4	
P.F. (%)	3.5	59.0	78.0	84.0	86.0	86.0	86.0	32.0

Motor Speed Data

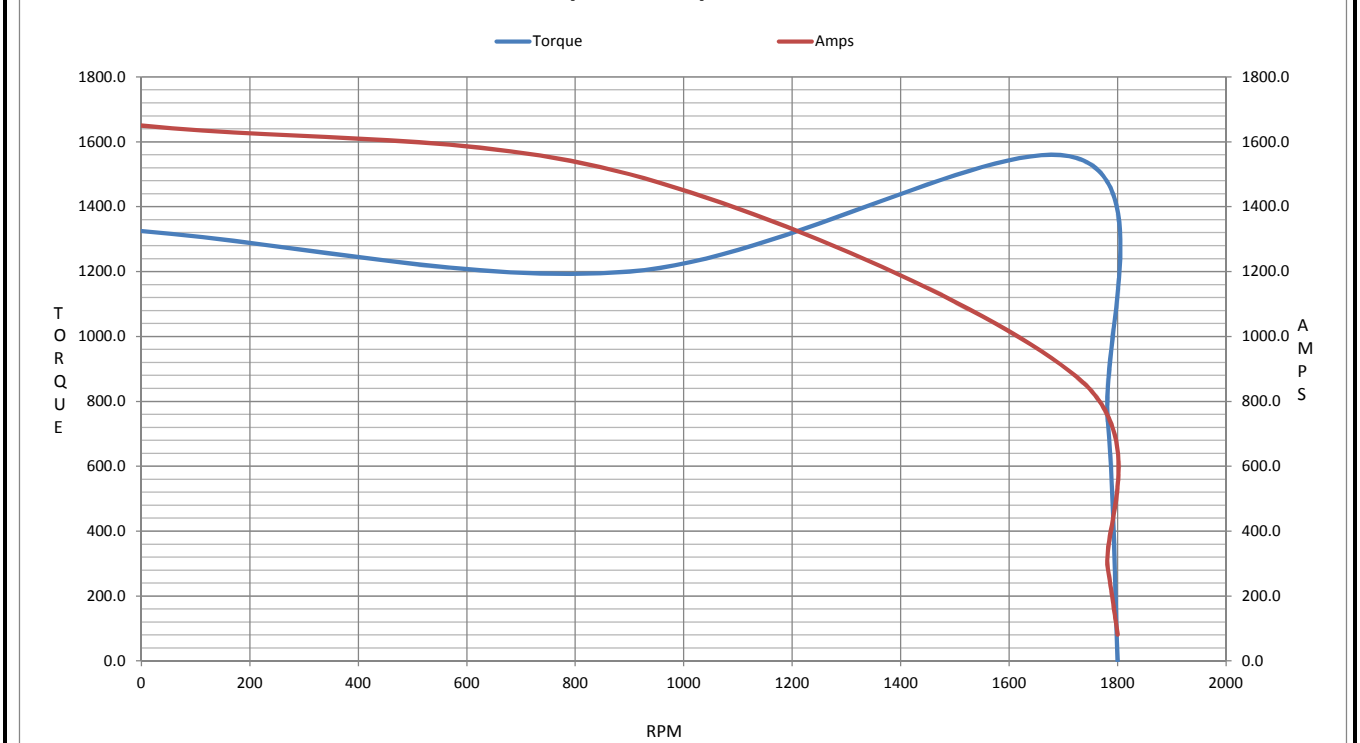
	LR	Pull-Up	BD	Rated	Idle
Speed (RPM)	0	900	1725	1782	1800
Current (Amps)	1,650	1,500	875	284	81.0
Torque (ft-lb)	1,325	1,200	1,550	736	0.00

Information Block

HP	250.0			
Sync. RPM	1800			
Frame	447			
Enclosure	DP			
Construction	TDN			
Voltage	460 V			
Frequency	60 Hz			
Design	B			
LR Code letter	F			
Service Factor	1.15			
Temp Rise @ FL	40 °C			
Duty	CONT			
Ambient	40 °C			
Elevation	1,000 feet			
Rotor/Shaft wk ²	61.0 Lb-Ft ²			
Ref Wdg	T447441 NONE			
Sound Pressure @ 1M	82 dBA			
VFD Rating	NONE			
Outline Dwg	B-SS555884-2438			
Conn. Diag	A-EE7300CB			
Additional Specifications:				
0				
365THFS8036				
EQUIV CKT (OHMS / PHASE)				
R1	R2	X1	X2	Xm
0.0090	0.0060	0.0750	0.0990	2.3110



Speed - Torque Curve



EC Declaration of Conformity

The undersigned representing
the manufacturer:

Regal Beloit America
100 East Randolph St.
Wausau, WI 54401

and the authorized representative
established within the Community:

Marathon Electric UK
6F Thistleton Road Ind. Estate
Market Overton
Oakham, Rutland LE15 7PP UK

are committed to providing customers with products that comply with applicable regulations and international protocols to which they are subject, including the requirements of the European Parliament Directive on the Harmonization of the laws relating to electrical equipment designed for use within certain voltage limits (2014/35/EU).

Regal Beloit America declares that the following product(s), to which this declaration relates, are in conformity with the relevant sections of the EC standards listed below.

This statement supersedes any statements previously issued pertaining to the product(s) listed below and is subject to change without notice.

Model No : 447TTDN16046

(Model No. may contain prefix and/or suffix characters)

Catalog No : U786

Rework No : N/A

Directives :

Low Voltage Directive 2014/35/EU

Harmonized Standards Used :

EN 60034-1: 2010 (IEC 60034-1: 2010)

EN 60034-5: 2001/A1:2007 (IEC 60034-5: 2000/A1:2006)

Authorized Representative:



Michael A. Logsdon
Vice President, Technology

Authorized Representative in the Community:



Julian Clark
Marketing Engineer

Created on 09/01/2022

CE 22