

# PRODUCT INFORMATION PACKET



Model No: 447THDN14043  
Catalog No: 447THDN14043  
400,1800,DPFV,447T,3/60/460

Regal and Marathon are trademarks of Regal Rexnord Corporation or one of its affiliated companies.  
©2023 Regal Rexnord Corporation, All Rights Reserved. MC017097E



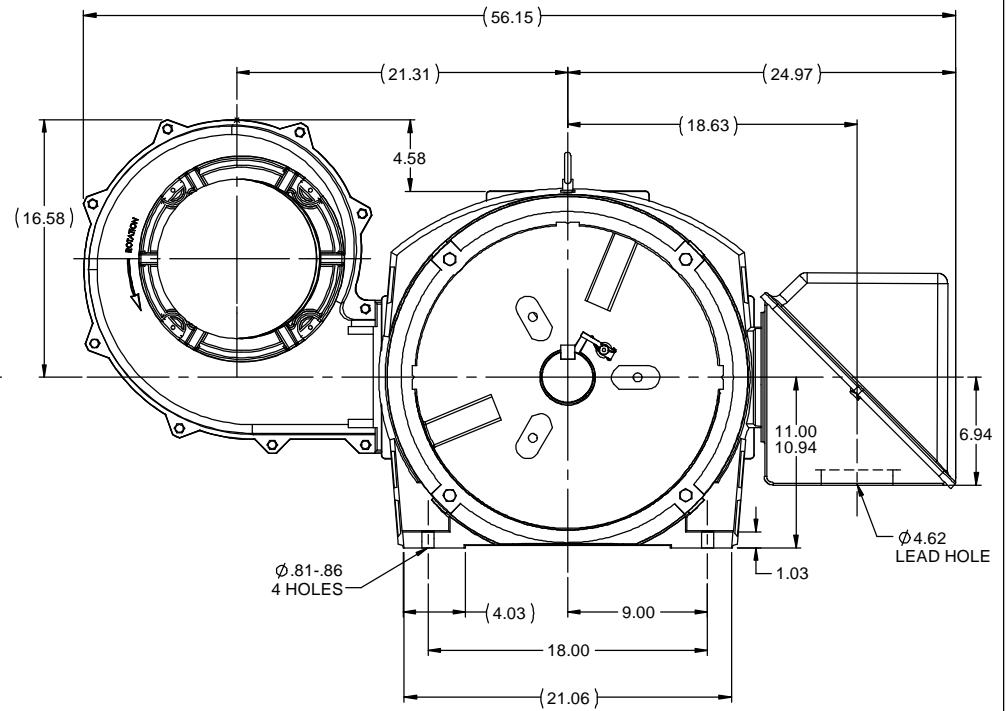
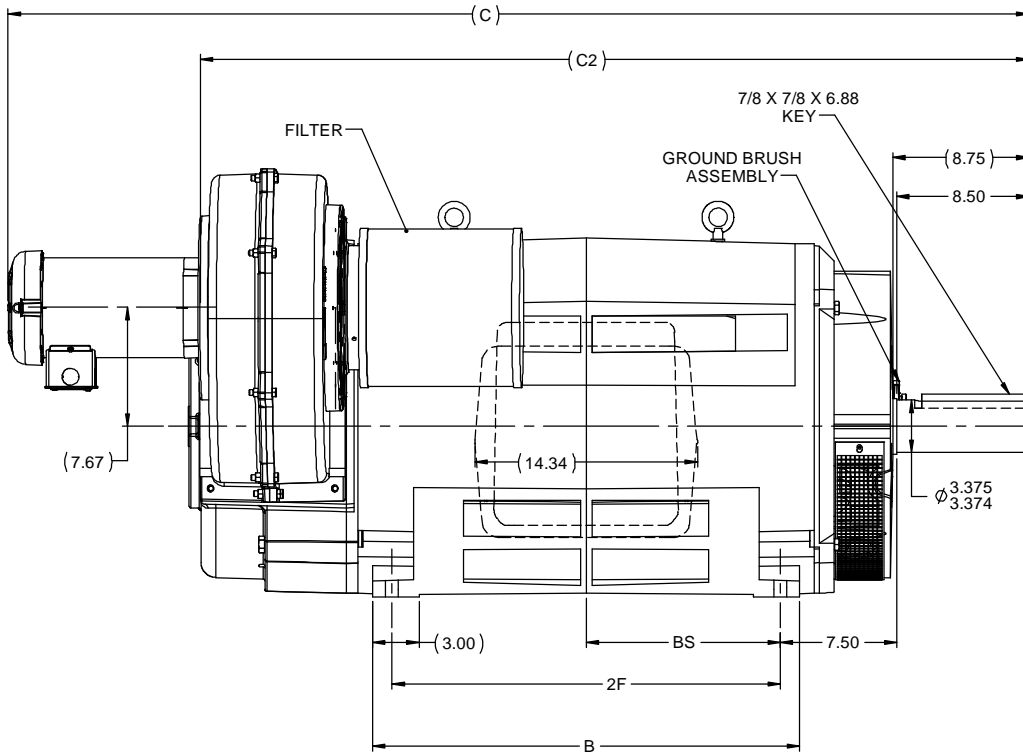
### Nameplate Specifications

Phase	<b>3</b>	Output HP	<b>400 Hp</b>
Output KW	<b>300.0 kW</b>	Voltage	<b>460 V</b>
Speed	<b>1785 rpm</b>	Service Factor	<b>1</b>
Frame	<b>447T</b>	Enclosure	<b>DPFV</b>
Thermal Protection	<b>Thermostat</b>	Efficiency	<b>95.8 %</b>
Ambient Temperature	<b>40 °C</b>	Frequency	<b>60 Hz</b>
Current	<b>460.0 A</b>	Power Factor	<b>85</b>
Duty	<b>Continuous</b>	Insulation Class	<b>H</b>
Design Code	<b>B</b>	KVA Code	<b>G</b>
Drive End Bearing Size	<b>6319</b>	Opp Drive End Bearing Size	<b>6314</b>
UL	<b>Recognized</b>	CSA	<b>Y</b>
CE	<b>Y</b>	IP Code	<b>22</b>
Number of Speeds	<b>1</b>		

### Technical Specifications

Electrical Type	<b>Squirrel Cage Inverter Duty</b>	Starting Method	<b>Inverter Only</b>
Poles	<b>4</b>	Rotation	<b>Reversible</b>
Resistance Main	<b>.0095 Ohms</b>	Mounting	<b>Rigid Base</b>
Motor Orientation	<b>Horizontal</b>	Drive End Bearing	<b>Ball</b>
Opp Drive End Bearing	<b>Ball</b>	Frame Material	<b>Cast Iron</b>
Shaft Type	<b>T</b>	Assembly/Box Mounting	<b>F2/F1 CAPABLE</b>
Outline Drawing	<b>B-SS555216-2438</b>	Connection Drawing	<b>A-EE7300S</b>

This is an uncontrolled document once printed or downloaded and is subject to change without notice. Date Created:08/24/2023

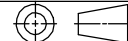


- NOTES:  
 1. CONDUIT BOX CAN BE ROTATED IN 90 ° STEPS.  
 2. NAMEPLATE TO BE READ FROM CONDUIT BOX SIDE OF MOTOR.

TOLERANCES UNLESS SPECIFIED		marathon <sup>®</sup> electric		DRAWN	HV 05-25-12
DEC	INCHES	CHK		CHK	MH 05-30-12
X	±.1	APPR		APPR	DJK 05-30-12
XX	±.03	TITLE	OUTLINE - F1 BLOWER - GRD. BRUSH	SCALE	1:8
XXX	±.005		447/9T FR. - DPFV	REF	
XXXX	±.0005	MATL		FMF	
		FINISH		PAGE	OF
		CHK LANG	±7°30'	SIZE	
		RFP		DRAWING NO	
		PREV		REV	
		NETWORK FILE NAME	SS555216	SIZE	<b>B</b>
				DRAWING NO	<b>SS555216</b>
				REV	

DASH	FRAME	B	C	C2	2F	BS
2438	447T	22.50	60.73	48.31	20.00	10.00
2938	449T	27.50	65.73	53.31	25.00	12.50

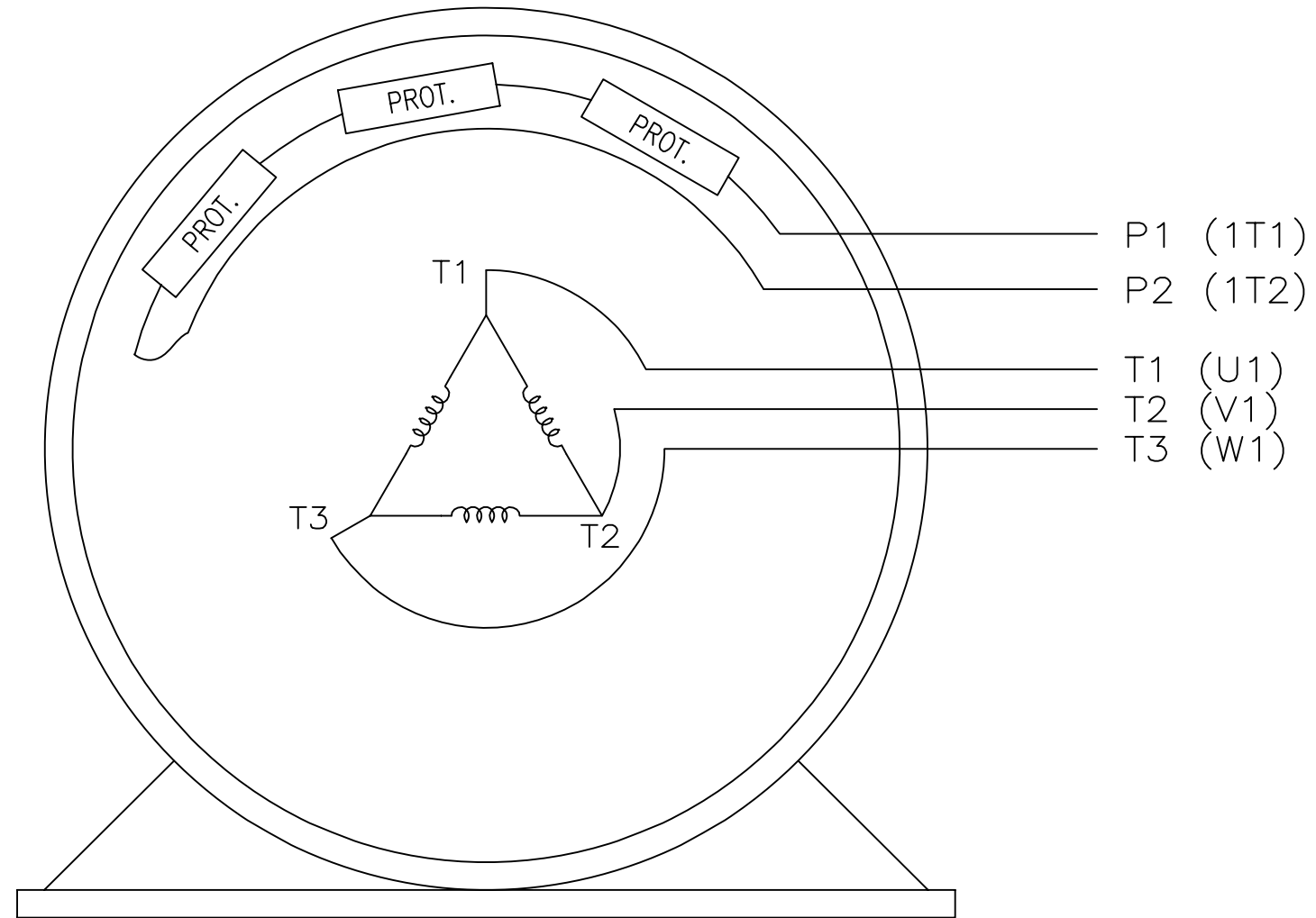
REVISION  
 THIRD ANGLE PROJECTION



EE7300S

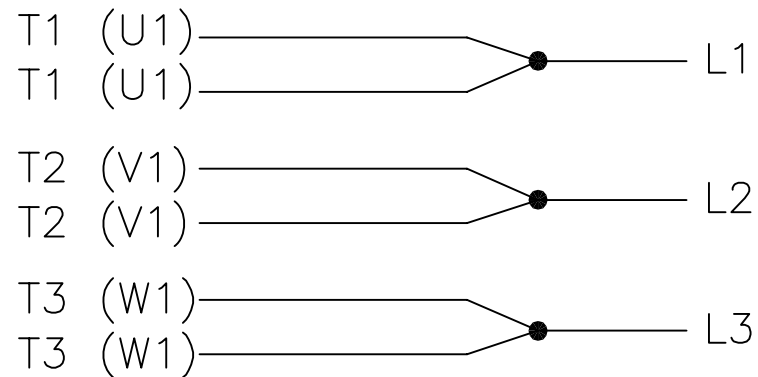
THREE PHASE – SINGLE VOLTAGE MOTOR

TO REVERSE ROTATION:  
INTERCHANGE ANY TWO LINE  
LEAD CONNECTIONS



VIEW OF TERMINAL END

IF MOTOR HAS MULTIPLE  
T'S PER LEAD CONNECT  
TOGETHER LIKE T'S



A-9806 DECAL

NO.	REVISION	BY & DATE	CHK	TOLERANCES UNLESS SPECIFIED			FINISH	DRAWN	PAGE	OF	REV.	
				DEC.	INCHES							
F	UPDATED TITLE BLOCK	HV 02-27-2014	EWB	.X	±	-		KL	12-15-1999			
3	REMOVED "N.C." FROM PROT.'S MU61770	JJB 08-02-2010		.XX	±	-		CHK	DJK	12-15-1999		
2	ADDED IEC MARKINGS MU61770	KL 09-16-2004	EAB	.XXX	±	-		APPD	DJK	12-15-1999		
1	NEW DRAWING	KL 12-16-1999		.XXXX	±	-						
				ANG	±	-						
THIS DRAWING IN DESIGN AND DETAIL IS OUR PROPERTY AND MUST NOT BE USED EXCEPT IN CONNECTION WITH OUR WORK ALL RIGHTS OF DESIGN AND INVENTION ARE RESERVED THIS IS AN ELECTRONICALLY GENERATED DOCUMENT - DO NOT SCALE THIS PRINT				RFP	CAD FILE ee7300s			SIZE	DRAWING NO.	PAGE	OF	REV.
				DIST	WA-LB-SB			A	EE7300S			F



TITLE CONNECTION DIAGRAM – EXTERNAL  
SINGLE VOLTAGE 3Ø MOTOR