

PRODUCT INFORMATION PACKET



Model No: 445TTGN18577
Catalog No: 445TTGN18577
125,1200,EPFC,445TCVZ,3/60/460

Regal and Marathon are trademarks of Regal Rexnord Corporation or one of its affiliated companies.
©2024 Regal Rexnord Corporation, All Rights Reserved. MC017097E



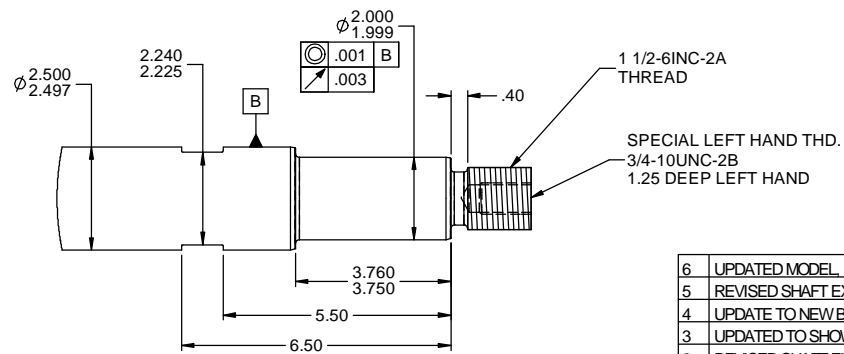
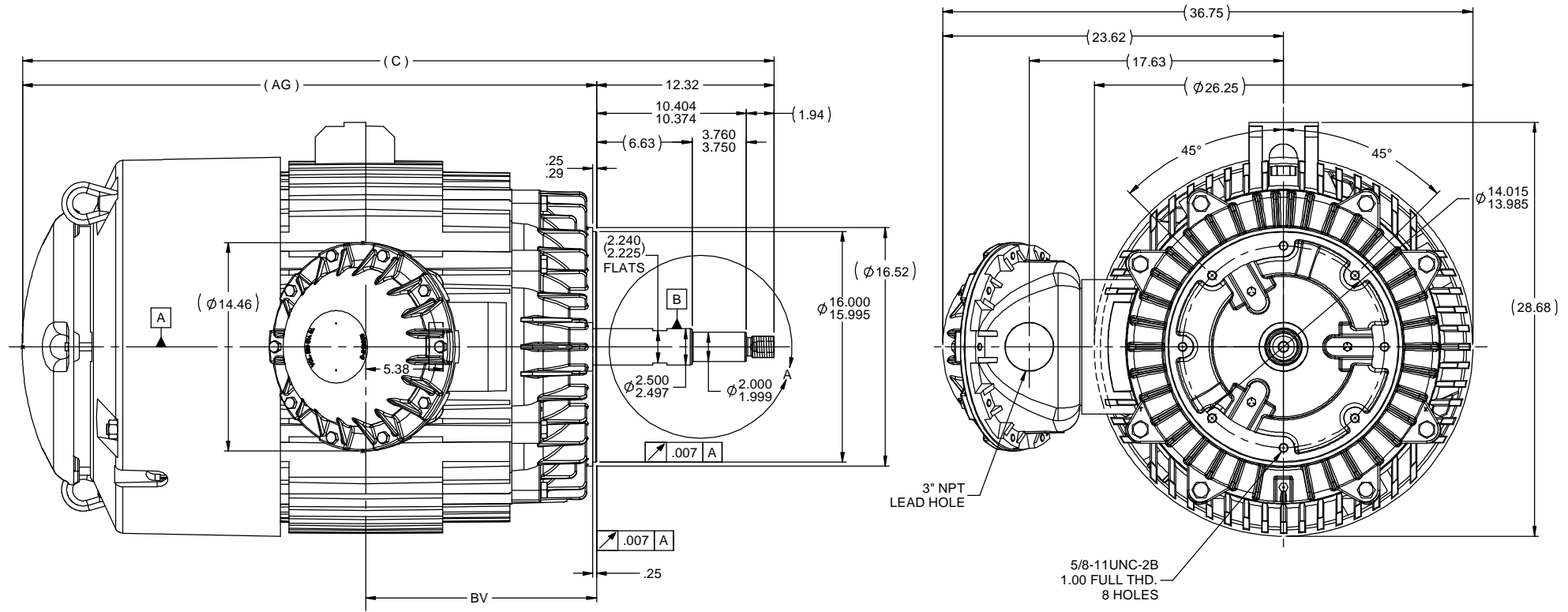
Nameplate Specifications

| | | | |
|------------------------|---------------|----------------------------|----------------------------|
| Phase | 3 | Output HP | 125 Hp |
| Output KW | 93.0 kW | Voltage | 460 V |
| Speed | 1185 rpm | Service Factor | 1 |
| Frame | 445TCVZ | Enclosure | Explosion Proof Fan cooled |
| Thermal Protection | No Protection | Efficiency | 93.6 % |
| Ambient Temperature | 40 °C | Frequency | 60 Hz |
| Current | 155.0 A | Power Factor | 81 |
| Duty | Continuous | Insulation Class | F |
| Design Code | B | KVA Code | F |
| Drive End Bearing Size | 6318 | Opp Drive End Bearing Size | 6316 |
| UL | No | CSA | N |
| CE | N | IP Code | 54 |
| Number of Speeds | 1 | Hazardous Location | EXP PROOF CL I GR C&D T2A |

Technical Specifications

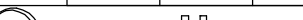

| | | | |
|-----------------------|------------------------------|-----------------------|------------------|
| Electrical Type | Squirrel Cage Inverter Rated | Starting Method | Line Or Inverter |
| Poles | 6 | Rotation | Reversible |
| Resistance Main | .048 Ohms | Mounting | Round |
| Motor Orientation | Shaft Down | Drive End Bearing | Ball |
| Opp Drive End Bearing | Ball | Frame Material | Cast Iron |
| Shaft Type | Single Special Extension | Assembly/Box Mounting | F1/F2 CAPABLE |
| Outline Drawing | B-SS552137-2025 | Connection Drawing | A-EE7300 |

This is an uncontrolled document once printed or downloaded and is subject to change without notice. Date Created:09/24/2024



NOTES:
1. CONDUIT BOX CAN BE ROTATED IN 90° STEPS.
2. NAMEPLATES TO BE READ FROM CONDUIT BOX SIDE OF MOTOR.

| DASH | FRAME | C | AG | BV |
|------|---------|-------|-------|-------|
| 2025 | 440TCVZ | 52.11 | 39.79 | 16.00 |

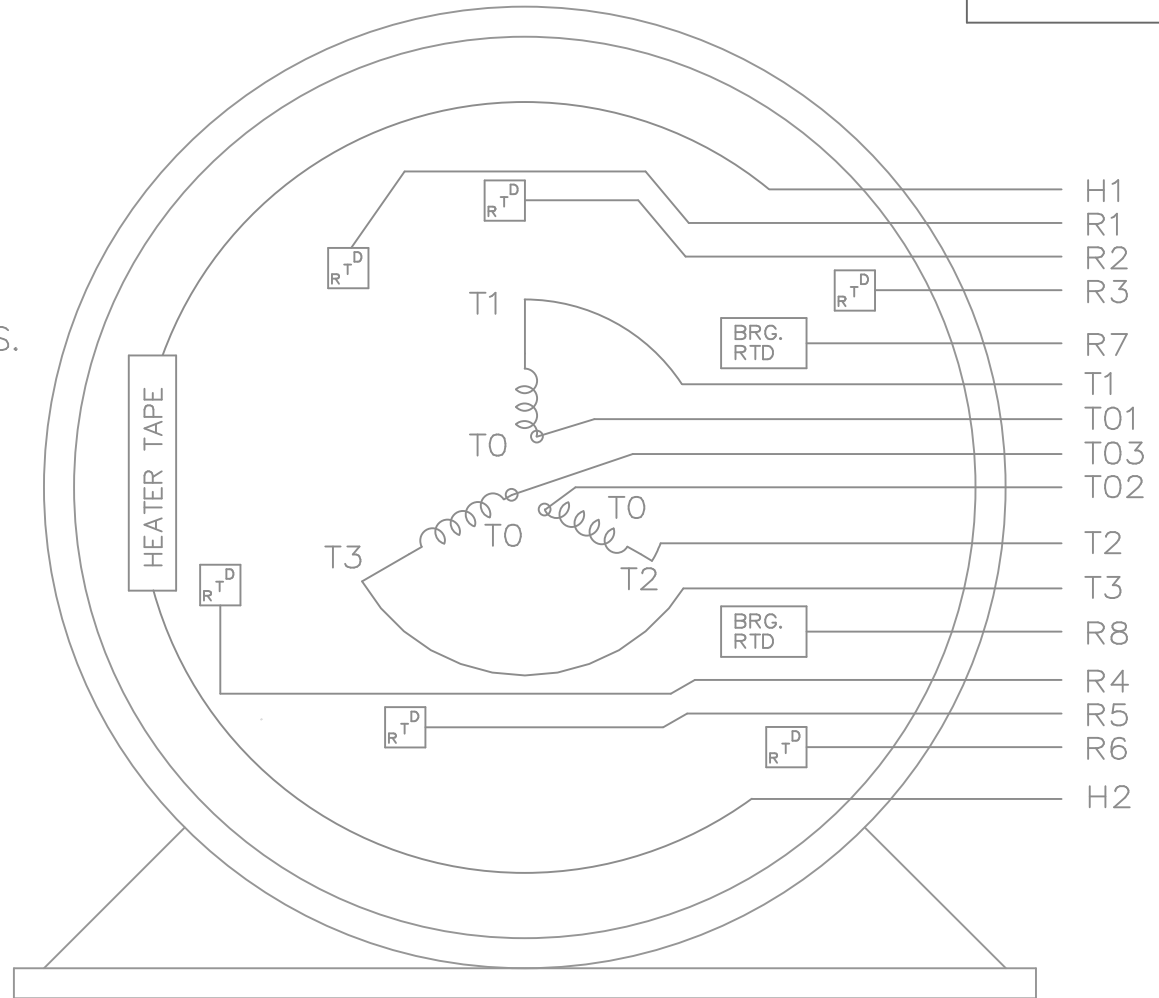
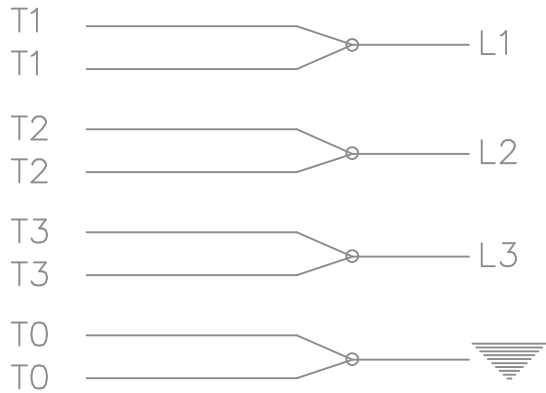
| | | | | | | | | |
|---|--------------------------------------|---------------|----------------|-------------------|-----------------------------|---|-------|----------------|
| 6 | UPDATED MODEL REVD BY DIM. WAS 15.75 | MJ105400 | JJB 12/27/2011 | MJS | TOLERANCES UNLESS SPECIFIED |  | DRAWN | TAT 10-10-2006 |
| 5 | REVISED SHAFT EXTENSION | ISAAC 11-1324 | WGJ 4/20/2011 | EMH | DEC INCHES | | CHK | ML 10-10-2006 |
| 4 | UPDATE TO NEW BOLT-ON CBOX | | RWR 05/31/2007 | ML | X ±.1 | | APPR | SW 10-11-2006 |
| 3 | UPDATED TO SHOW PIPE NIPPLE | MJ78960 | TJW 5/24/2007 | ML | XX ±.03 | | SCALE | 1:6.8 |
| 2 | REVISED SHAFT EXT. PER CN40781 | | TJW 5/23/2007 | ML | XXX ±.005 | | REF | |
| 1 | UPDATE D.E. EXT. AND ADD DETAIL | CN40940 | RWR 01-17-2007 | ML | XXXX ±.0005 | | MATL | MJ75601 |
| NO | REVISION | | BY & DATE | CHK | ANG ±7.30" | FINISH | PAGE | OF |
| THIRD ANGLE PROJECTION | | | | RFP | | PREV | SIZE | DRAWING NO |
|  | | | | NETWORK FILE NAME | | SS552137 | B | SS552137 |
| | | | | | | | | REV |
| | | | | | | | | 6 |

THREE PHASE – SINGLE VOLTAGE
MOTOR OR INDUCTION GENERATOR
WITH 6 STATOR RTD'S MARKED R1
THRU R6, 2 BRG. RTD'S MARKED
R7 AND R8, AND 2 HEATER LEADS
MARKED H1 AND H2


NOTE:
WHEN MORE THAN ONE HEATER IS USED
HEATERS MUST BE CONNECTED IN SERIES.

TO REVERSE ROTATION:
INTERCHANGE ANY TWO LINE
LEAD CONNECTIONS

IF MOTOR HAS MULTIPLE
T'S PER LEAD CONNECT
TOGETHER LIKE T'S



VIEW OF TERMINAL END

| | | | | | | | | | | | |
|---|--------------------|----------------|---------------|--------------------------------|-------------------|---|---------------------|------|-------------|---------|------|
| | | | | TOLERANCES UNLESS SPECIFIED | |  | DRAWN KL 10-09-2001 | | | | |
| | | | | DEC. | INCHES | | CHK DJK 10-09-2001 | | | | |
| | | | | .X | ±.1 | | APPD EAB 10-09-2001 | | | | |
| | | | | .XX | ±.02 | | SCALE 1=1 | | | | |
| | | | | .XXX | ±.005 | | REF | | | | |
| 2 | REDRAWN IN AUTOCAD | TAT 08-02-2004 | ML | .XXX | ±.005 | TITLE CONNECTION DIAGRAM – EXTERNAL | | | | | |
| 1 | NEW DRAWING | MU38688 | KL 10-09-2001 | .XXXX | ±.0005 | MAT'L. | | | | | |
| NO. | REVISION | BY & DATE | CHK | ANG | ±7'30" | FINISH | | | | | |
| THIS DRAWING IN DESIGN AND DETAIL IS OUR PROPERTY AND MUST NOT BE USED EXCEPT IN CONNECTION WITH OUR WORK ALL RIGHTS OF DESIGN AND INVENTION ARE RESERVED THIS IS AN ELECTRONICALLY GENERATED DOCUMENT – DO NOT SCALE THIS PRINT | | | RFP | | CAD FILE ee7300hu | | | SIZE | DRAWING NO. | PAGE OF | REV. |
| | | | DIST | | | | | A | EE7300HU | | 2 |