

PRODUCT INFORMATION PACKET

marathon®
Motors

Model No: 445TTGN18533
Catalog No: 445TTGN18533
150,1800,EPFC,445TCVZ,3/60/575

Regal and Marathon are trademarks of Regal Rexnord Corporation or one of its affiliated companies.
©2024 Regal Rexnord Corporation, All Rights Reserved. MC017097E

The logo for Regal Rexnord, featuring a stylized 'R' icon followed by the text 'RegalRexnord'.

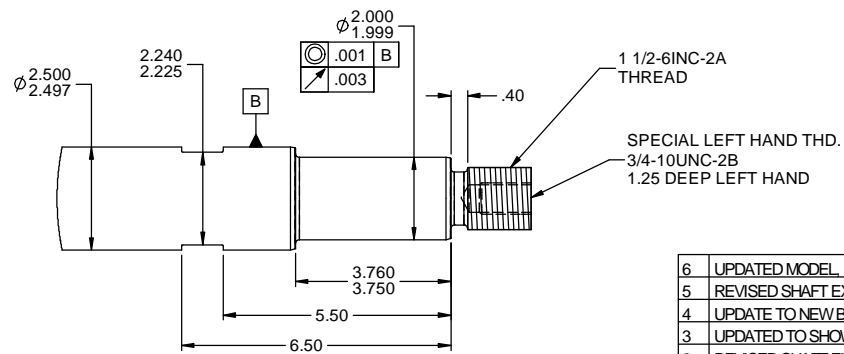
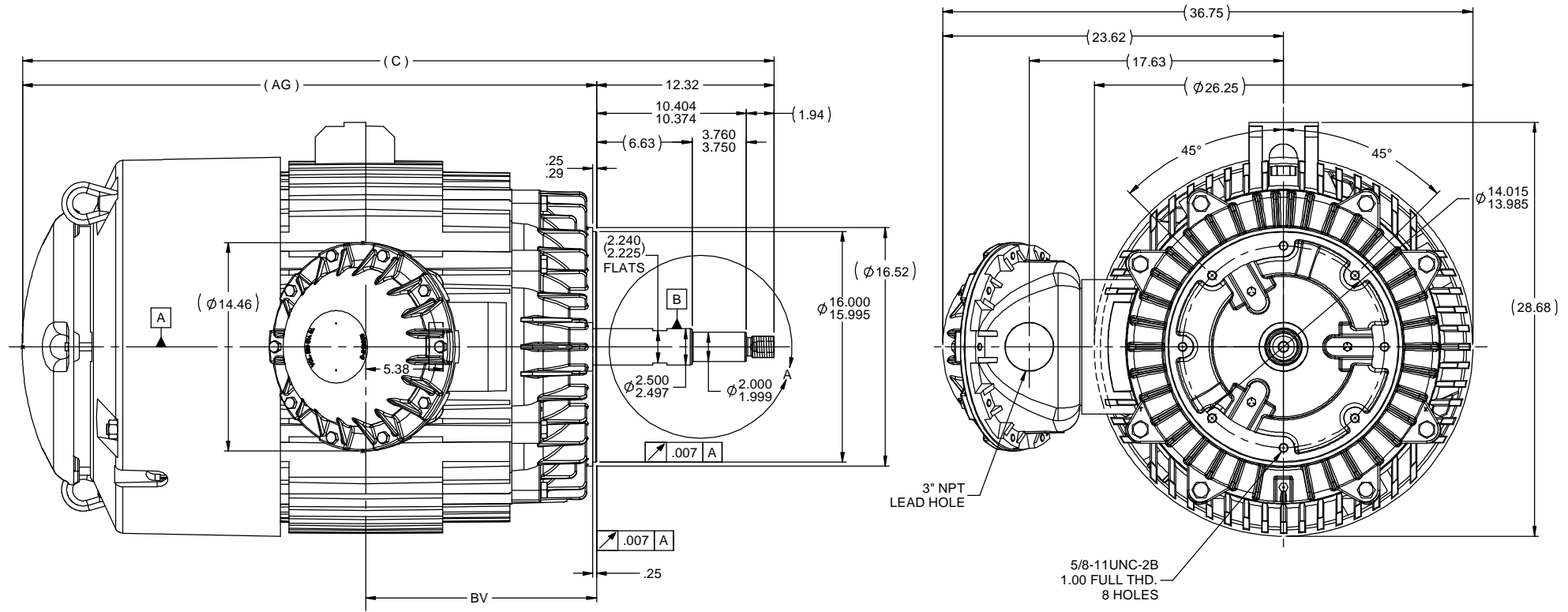
Nameplate Specifications

Phase	3	Output HP	150 Hp
Output KW	112.0 kW	Voltage	575 V
Speed	1785 rpm	Service Factor	1.15
Frame	445TCVZ	Enclosure	Explosion Proof Fan cooled
Thermal Protection	No Protection	Efficiency	95 %
Ambient Temperature	55 °C	Frequency	60 Hz
Current	138.0 A	Power Factor	86
Duty	Continuous	Insulation Class	F
Design Code	B	KVA Code	G
Drive End Bearing Size	6318	Opp Drive End Bearing Size	6316
UL	No	CSA	N
CE	N	IP Code	54
Number of Speeds	1	Hazardous Location	EXP PROOF CL I GR C&D T2A

Technical Specifications

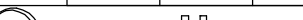

Electrical Type	Squirrel Cage Inverter Rated	Starting Method	Line Or Inverter
Poles	4	Rotation	Reversible
Resistance Main	.027 Ohms	Mounting	Round
Motor Orientation	Shaft Down	Drive End Bearing	Ball
Opp Drive End Bearing	Ball	Frame Material	Cast Iron
Shaft Type	Single Special Extension	Assembly/Box Mounting	F1/F2 CAPABLE
Outline Drawing	B-SS552137-2025	Connection Drawing	A-EE7300

This is an uncontrolled document once printed or downloaded and is subject to change without notice. Date Created:09/24/2024



NOTES:
 1. CONDUIT BOX CAN BE ROTATED IN 90° STEPS.
 2. NAMEPLATES TO BE READ FROM CONDUIT BOX SIDE OF MOTOR.

DASH	FRAME	C	AG	BV
2025	440TCVZ	52.11	39.79	16.00

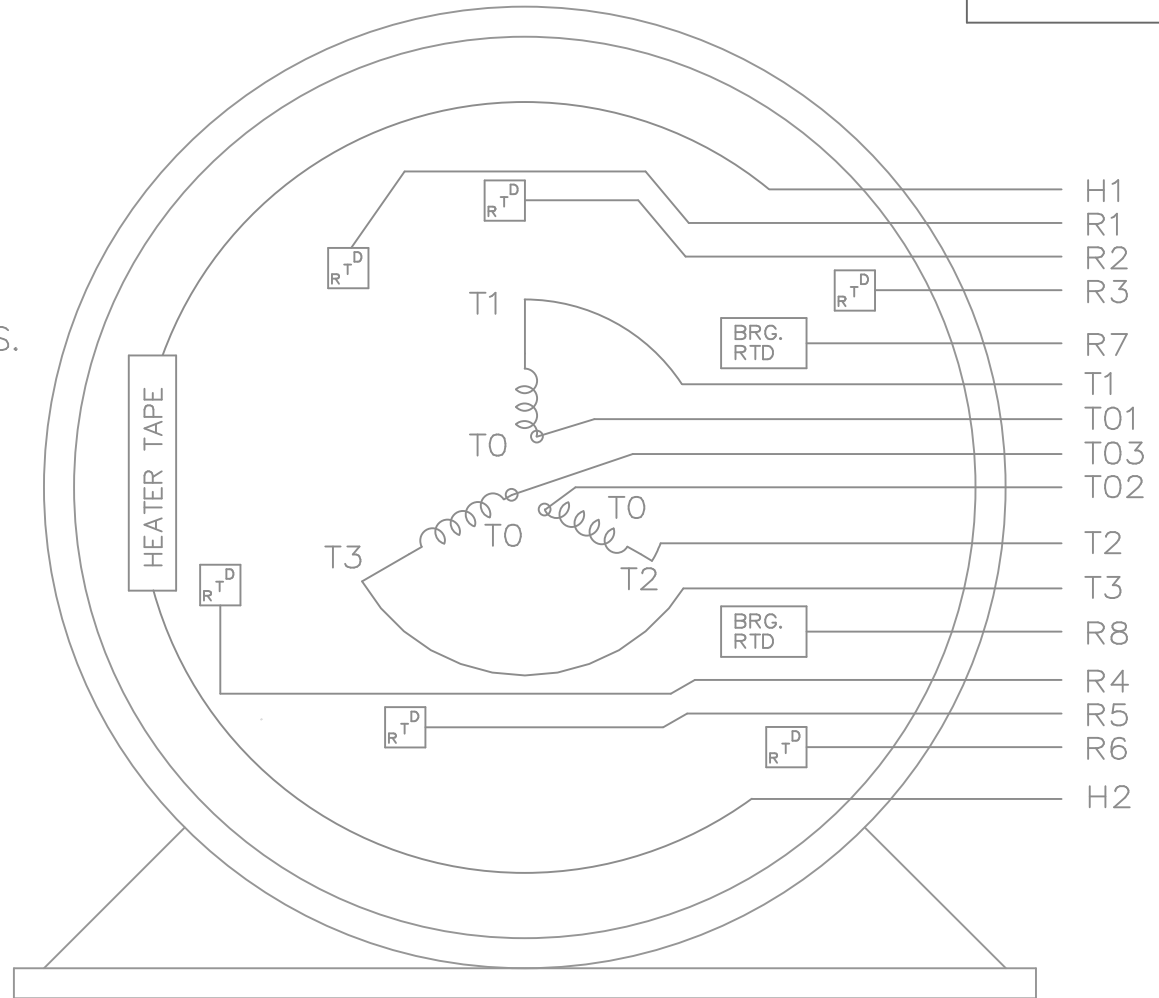
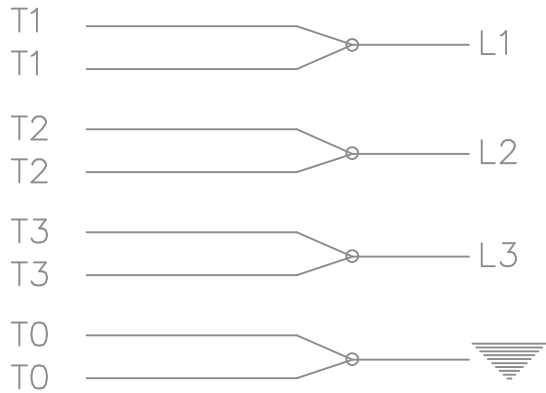
6	UPDATED MODEL REV'D BY DIM. WAS 15.75	MJ105400	JJB 12/27/2011	MJS	TOLERANCES UNLESS SPECIFIED		DRAWN	TAT 10-10-2006
5	REVISED SHAFT EXTENSION	ISAAC 11-1324	WGJ 4/20/2011	EMH	DEC INCHES		CHK	ML 10-10-2006
4	UPDATE TO NEW BOLT-ON CBOX		RWR 05/31/2007	ML	X ±.1		APPR	SW 10-11-2006
3	UPDATED TO SHOW PIPE NIPPLE	MJ78960	TJW 5/24/2007	ML	XX ±.03		SCALE	1:6.8
2	REVISED SHAFT EXT. PER CN40781		TJW 5/23/2007	ML	XXX ±.005		REF	
1	UPDATE D.E. EXT. AND ADD DETAIL	CN40940	RWR 01-17-2007	ML	XXXX ±.0005		MATL	MJ75601
NO	REVISION		BY & DATE	CHK	ANG ±7.30"	FINISH	PAGE	OF
THIRD ANGLE PROJECTION				RFP		PREV	SIZE	DRAWING NO
				NETWORK FILE NAME		SS552137	B	SS552137
								REV
								6

THREE PHASE – SINGLE VOLTAGE
MOTOR OR INDUCTION GENERATOR
WITH 6 STATOR RTD'S MARKED R1
THRU R6, 2 BRG. RTD'S MARKED
R7 AND R8, AND 2 HEATER LEADS
MARKED H1 AND H2


NOTE:
WHEN MORE THAN ONE HEATER IS USED
HEATERS MUST BE CONNECTED IN SERIES.

TO REVERSE ROTATION:
INTERCHANGE ANY TWO LINE
LEAD CONNECTIONS

IF MOTOR HAS MULTIPLE
T'S PER LEAD CONNECT
TOGETHER LIKE T'S



VIEW OF TERMINAL END

				TOLERANCES UNLESS SPECIFIED			DRAWN KL 10-09-2001				
				DEC.	INCHES		CHK DJK 10-09-2001				
				.X	±.1		APPD EAB 10-09-2001				
				.XX	±.02		SCALE 1=1				
				.XXX	±.005		REF				
2	REDRAWN IN AUTOCAD	TAT 08-02-2004	ML	.XXX	±.005	TITLE CONNECTION DIAGRAM – EXTERNAL				FMF	
1	NEW DRAWING MU38688	KL 10-09-2001		.XXXX	±.0005	MAT'L.				PREV	
NO.	REVISION	BY & DATE	CHK	ANG	±7'30"	FINISH					
THIS DRAWING IN DESIGN AND DETAIL IS OUR PROPERTY AND MUST NOT BE USED EXCEPT IN CONNECTION WITH OUR WORK ALL RIGHTS OF DESIGN AND INVENTION ARE RESERVED THIS IS AN ELECTRONICALLY GENERATED DOCUMENT – DO NOT SCALE THIS PRINT			RFP		CAD FILE ee7300hu			SIZE	DRAWING NO.	PAGE OF	REV.
			DIST					A	EE7300HU		2