

PRODUCT INFORMATION PACKET



Model No: 445TTGN16602
Catalog No: 445TTGN16602
125,1200,EPFC,445TC,3/60/460

Regal and Marathon are trademarks of Regal Rexnord Corporation or one of its affiliated companies.
©2023 Regal Rexnord Corporation, All Rights Reserved. MC017097E



Nameplate Specifications

Output HP	125 Hp	Output KW	93.0 kW
Frequency	60 Hz	Voltage	460 V
Current	155.0 A	Speed	1185 rpm
Service Factor	1.15	Phase	3
Efficiency	95 %	Power Factor	82
Duty	Continuous	Insulation Class	F
Design Code	B	KVA Code	G
Frame	445TC	Enclosure	Explosion Proof Fan cooled
Thermal Protection	Thermostat	Ambient Temperature	40 °C
Drive End Bearing Size	6318	Opp Drive End Bearing Size	6316
UL	UL Listed And CSA Certified	CSA	Y
CE	N	IP Code	54
Hazardous Location	EXP PROOF CL I GR C&D CL II GR F&G T3B	Number of Speeds	1

Technical Specifications

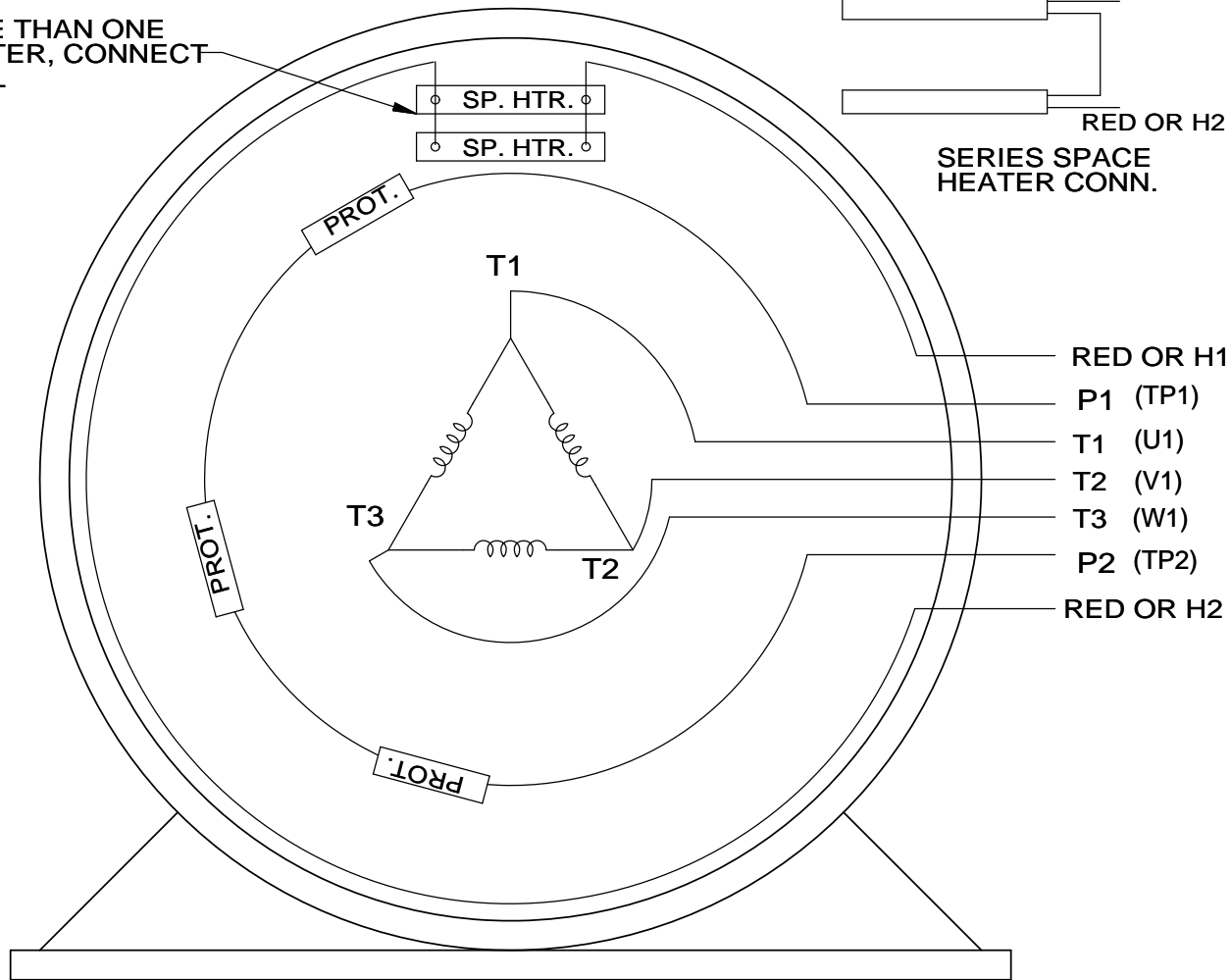
Electrical Type	Squirrel Cage Inverter Rated	Starting Method	Line Or Inverter
Poles	6	Rotation	Reversible
Resistance Main	.042 Ohms	Mounting	Rigid Base
Motor Orientation	Horizontal	Drive End Bearing	Ball
Opp Drive End Bearing	Ball	Frame Material	Cast Iron
Shaft Type	T	Assembly/Box Mounting	F1 ONLY
Connection Drawing	EE7300AP	Outline Drawing	SS516094-2025

This is an uncontrolled document once printed or downloaded and is subject to change without notice. Date Created:04/18/2023

DASH	FRAME	B	C	2F	BS	AG
1825	444TC	17.75	41.35	14.50	7.25	33.10
2025	445TC	19.75	43.35	16.50	8.25	35.10

7/25/2008 10:27:57 AM

WHEN MORE THAN ONE
SPACE HEATER, CONNECT
IN PARALLEL



SERIES SPACE
HEATER CONN.

RED OR H1

P1 (TP1)

T1 (U1)

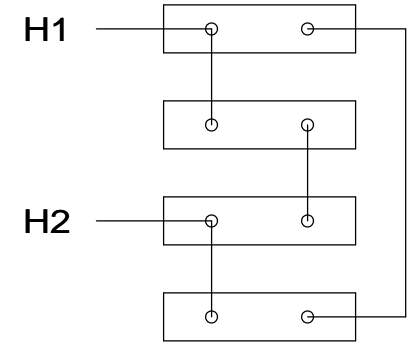
T2 (V1)

T3 (W1)

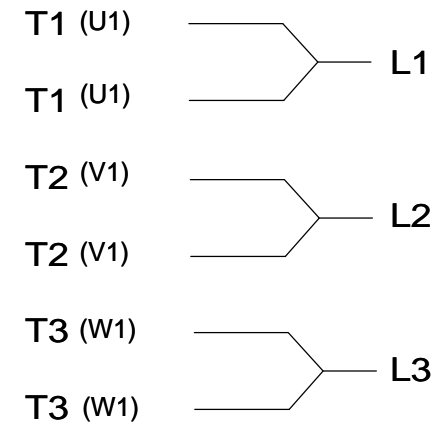
P2 (TP2)

RED OR H2

SPACE HEATERS
CONNECTED IN
SERIES PARALLEL



IF MOTOR OR GEN.
HAS 6 LEADS



NOTE:
THERMO-PROTECTORS
CONNECTED IN SERIES

VIEW OF TERMINAL END

DRAWING REVISION J	REVISION BY JHA	DATE 03-06-2017
ECO ECO-0119314	APPROVED BY DJK	DATE 03-06-2017

ECO DESCRIPTION

UPDATED TO SOLIDWORKS

COPYRIGHT REGAL BELOIT AMERICA, INC. ALL RIGHTS RESERVED.
PROPRIETARY AND CONFIDENTIAL INFORMATION - THIS DOCUMENT IS THE PROPERTY OF
REGAL BELOIT AMERICA, INC. ("OWNER") AND CONTAINS OWNER'S PROPRIETARY
INFORMATION. ANY PERSON, CORPORATION OR OTHER FIRM RECEIVING IT IS DEEMED,
BY RECEIVING IT, TO AGREE THAT IT, AND/OR ANY PART OF IT, SHALL NOT BE DISCLOSED
TO ANY PERSON, CORPORATION OR OTHER ENTITY, DUPLICATED, AND/OR USED, EXCEPT
AS EXPRESSLY APPROVED IN WRITING IN ADVANCE BY OWNER. THIS DOCUMENT SHALL
BE RETURNED TO OWNER UPON REQUEST. IT MAY BE SUBJECT TO CERTAIN
RESTRICTIONS UNDER APPLICABLE EXPORT CONTROL LAWS AND REGULATIONS.

TOLERANCES UNLESS
OTHERWISE SPECIFIED:

DEC.	INCH	mm	ANGLE
.X	±0.1	[±2.5]	±7' 30"
.XX	±0.02	[±0.51]	
.XXX	±0.005	[±0.127]	
.XXXX	±0.0005	[±0.0127]	

REMOVE BURRS & BREAK SHARP
EDGES: .003/.015 [.076/.381] X 45°
CORNER FILLETS: R.02 [.51]

MACHINED SURFACES: 200
INCH
mm SHOWN IN [BRACKETS]

DRAWN BY
KL

DATE
10-08-1993

APPROVED BY
TB

DATE
10-12-1993

REFERENCE

THIRD ANGLE
PROJECTION



Regal Beloit America, Inc.

DESCRIPTION

CONN DIAGRAM-EXTERNAL

3 PHASE - SINGLE VOLTAGE - WITH SPACE HEATERS

MATERIAL

PROCESS/FINISH

SIZE
A

DRAWING NUMBER

EE7300AP

SHEET
1 OF 1

Data Sheet

Date: 3/14/2023
Customer:
Attention:
Submitted by:



445TTGN16602

511708 FAN

Submittal

Data @ 460 V

Motor Load Data

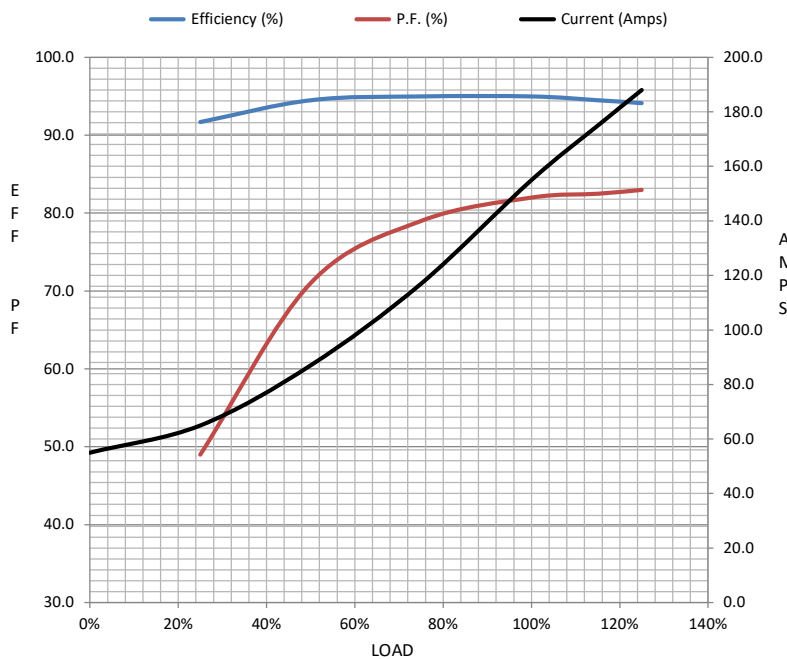
Load	0%	25%	50%	75%	100%	115%	125%	LR	
Current (Amps)	55.0	65.0	87.0	117	155	175	188	825	
Torque (ft-lb)	0.00	137	275	414	553	637	693	775	
RPM	1200	1196	1194	1190	1185	1,182	1180	0	
Efficiency (%)		91.7	94.5	95.0	95.0	94.5	94.1		
P.F. (%)	4.0	49.0	71.0	79.0	82.0	82.5	83.0	30.0	

Motor Speed Data

	LR	Pull-Up	BD	Rated	Idle
Speed (RPM)	0	600	1150	1185	1200
Current (Amps)	825	750	500	155	55.0
Torque (ft-lb)	775	725	1,250	553	0.00

Information Block

HP	125.0
Sync. RPM	1200
Frame	445
Enclosure	EPFC
Construction	TFN
Voltage	460 V
Frequency	60 Hz
Design	B
LR Code letter	G
Service Factor	1.15
Temp Rise @ FL	80 ° C
Duty	CONT
Ambient	40 ° C
Elevation	3,300 feet
Rotor/Shaft wk ²	61.0 Lb-Ft ²
Ref Wdg	T445693 NONE
Sound Pressure @ 1M	72 dBA
VFD Rating	VARIABLE 10:1
Outline Dwg	SS516094-2025
Conn. Diag	EE7300AP
Additional Specifications:	
0	
0	
EQUIV CKT (OHMS / PHASE)	
R1	R2
0.0250	0.0180
X1	X2
0.2040	0.2410
Xm	3.8590



Speed -Torque Curve

