

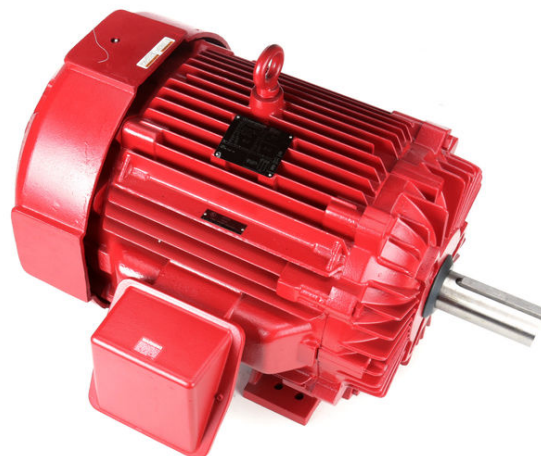
PRODUCT INFORMATION PACKET

marathon®
Motors

Model No: 445TTFN14337

Catalog No: Y1636

Fire Pump Motor, 150 & 125 HP, 3 Ph, 60 & 50 Hz, 460 & 380 V, 1800 & 1500 RPM, 445T Frame, TEFC



Regal and Marathon are trademarks of Regal Rexnord Corporation or one of its affiliated companies.

©2023 Regal Rexnord Corporation, All Rights Reserved. MC017097E

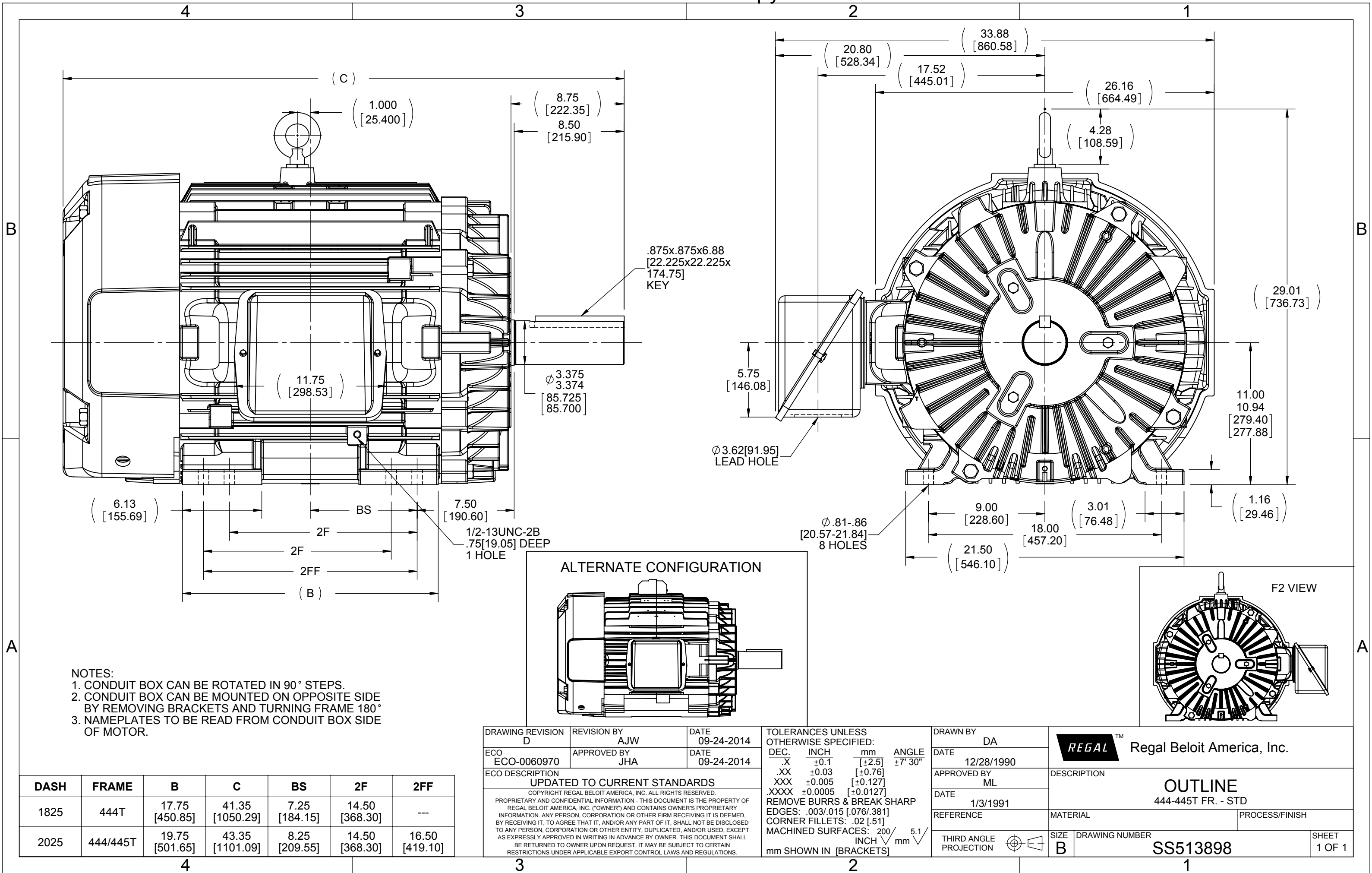
RegalRexnord

Nameplate Specifications

Phase	3	Output HP	150 & 125 Hp
Output KW	112.0 & 93.0 kW	Voltage	460 & 380 V
Speed	1785 & 1485 rpm	Service Factor	1.15 & 1.15
Frame	445T	Enclosure	Totally Enclosed Fan Cooled
Thermal Protection	No Protection	Efficiency	95 & 94.5 %
Ambient Temperature	40 °C	Frequency	60 & 50 Hz
Current	170 & 172 A	Power Factor	86.5
Duty	Continuous	Insulation Class	F
Design Code	B	KVA Code	G
Drive End Bearing Size	6318	Opp Drive End Bearing Size	6316
UL	No	CSA	Y
CE	Y	IP Code	43
Number of Speeds	1		

Technical Specifications

Electrical Type	Squirrel Cage Induction Run	Starting Method	Part Wdg Start & Wye Start Delta Run
Poles	4	Rotation	Reversible
Resistance Main	.027 Ohms	Mounting	Rigid Base
Motor Orientation	Horizontal	Drive End Bearing	Ball
Opp Drive End Bearing	Ball	Frame Material	Cast Iron
Shaft Type	T	Overall Length	43.35 in
Frame Length	20.25 in	Shaft Diameter	3.375 in
Shaft Extension	8.75 in	Assembly/Box Mounting	F1/F2 CAPABLE
Outline Drawing	B-SS513898-2025	Connection Drawing	A-EE7300BH





				TOLERANCES UNLESS SPECIFIED		 REGAL - BELOIT CORPORATION	DRAWN RJW 02-11-2005								
				DEC.	INCHES		CHK	ML	02-11-2005						
				.X	±.1		APPD	GK	02-11-2005						
				.XX	±.02		TITLE CONNECTION DIAGRAM 12 LEAD- SINGLE VOLTAGE								
D	CHANGED TO REGAL TITLE BLOCK	ECO-0108299	WGJ 08/22/2016	EMH	.XXX ±.005	SCALE									
1	ADDED IEC TERMINAL MARKINGS	CN 41429	JJB 05/24/2007	ML	.XXXX ±.0005	MAT'L.				REF					
NO.	REVISION		BY & DATE	CHK	ANG	±7'30"	FINISH				FMF				
											PREV				
THIS DRAWING IN DESIGN AND DETAIL IS OUR PROPERTY AND MUST NOT BE USED EXCEPT IN CONNECTION WITH OUR WORK ALL RIGHTS OF DESIGN AND INVENTION ARE RESERVED THIS IS AN ELECTRONICALLY GENERATED DOCUMENT - DO NOT SCALE THIS PRINT				RFP		02-11-2005		CAD FILE		ee7300bh	SIZE	DRAWING NO.	PAGE	OF	REV.
				DIST		LB				A	EE7300BH				C

CERTIFICATION DATA SHEET

Model#: 445TTFN14337 AA
 CONN. DIAGRAM: A-EE7300BH
 OUTLINE: B-SS513898-2025

WINDING#: T4454205 NONE 1
 ASSEMBLY: F1/F2 CAPABLE

TYPICAL MOTOR PERFORMANCE DATA

HP	KW	SYNC. RPM	F.L. RPM	FRAME	ENCLOSURE	KVA CODE	DESIGN
150&125	112&93	1800	1785&1485	445T	TEFC	G	B

PH	Hz	VOLTS	FL AMPS	START TYPE	DUTY	INSL	S.F	AMB°C	ELEVATION
3	60/50	460#380	170&172	PWS & YDRUN	CONTINUOUS	F1	1.15/1.15	40	3300

FULL LOAD EFF: 95&94.5	3/4 LOAD EFF: 95	1/2 LOAD EFF: 93.6	GTD. EFF	ELEC. TYPE	NO LOAD AMPS
FULL LOAD PF: 86.5&87	3/4 LOAD PF: 85	1/2 LOAD PF: 78	94.1	SQ CAGE IND RUN	50

F.L. TORQUE	LOCKED ROTOR AMPS	L.R. TORQUE	B.D. TORQUE	F.L. RISE°C
441 LB-FT	1075	650 LB-FT 146	1000 LB-FT 226	75

SOUND PRESSURE @ 3 FT.	SOUND POWER	ROTOR WK^2	MAX. WK^2	SAFE STALL TIME	STARTS /HOUR	APPROX. MOTOR WGT
80 dBA	90 dBA	51 LB-FT^2	1000 LB-FT^2	25 SEC.	2	2150 LBS.

*** SUPPLEMENTAL INFORMATION ***

DE BRACKET TYPE	ODE BRACKET TYPE	MOUNT TYPE	ORIENTATION	SEVERE DUTY	HAZARDOUS LOCATION	D RIP COVER	SCREENS	PAINT
STANDARD	STANDARD	RIGID	HORIZONTAL	FALSE	NONE	FALSE	NONE	RED (ENAMEL)

BEARINGS		GREASE	SHAFT TYPE	SPECIAL DE	SPECIAL ODE	SHAFT MATERIAL	FRAME MATERIAL
DE	OPE						
BALL	BALL						
6318	6316	POLYREX EM	T	NONE	NONE	1045 HOT ROLLED (C-204)	CAST IRON

THERMO-PROTECTORS				THERMISTORS	CONTROL	SPACE /n HEATERS
THERMOSTATS	PROTECTORS	WDG RTDs	BRG RTDs			
NONE	NOT	NONE	NONE	NONE	FALSE	NONE VOLTS

If Inverter equals NONE, contact factory for further information

INVERTER TORQUE: NONE
INV. HP SPEED RANGE: NONE
ENCODER: NONE
NONE NONE
NONE NONE PPR
BRAKE: NONE NONE
NONE P/N NONE
NONE NONE
- FT-LB NONE V NONE Hz

*
N
O
T
E
S
*

DATE: 06/21/2017 05:49:58 AM
 FORM 3531 REV.3 02/07/99
 ** Subject to change without notice.

Data Sheet

Date: 6/19/2017

Customer:

Attention:

Submitted by: FAREEDA DUDEKULA

445TTFN14337



Submittal

Data @ 460 V

Motor Load Data

Load	0%	25%	50%	75%	100%	115%	125%	LR	
Current (Amps)	50.0	65.0	95.0	132	170	195	212	1,075	
Torque (ft-lb)	0.00	110	220	330	441	508	553	650	
RPM	1800	1795	1792	1788	1785	1,782	1780	0	
Efficiency (%)		89.5	93.6	95.0	95.0	95.0	94.5		
P.F. (%)	7.0	60.0	78.0	85.0	86.5	87.0	87.0	26.0	

Motor Speed Data

	LR	Pull-Up	BD	Rated	Idle	Information Block																											
Speed (RPM)	0	900	1725	1785	1800	HP	150.0																										
Current (Amps)	1,075	1,000	600	170	50.0	Sync. RPM	1800																										
Torque (ft-lb)	650	550	1,000	441	0.00	Frame	445																										
<div><div><div>Efficiency (%)</div><div>P.F. (%)</div><div>Current (Amps)</div></div><table><caption>Graph Data Points (Estimated)</caption><thead><tr><th>Load (%)</th><th>Efficiency (%)</th><th>P.F. (%)</th><th>Current (Amps)</th></tr></thead><tbody><tr><td>25</td><td>89</td><td>60</td><td>45</td></tr><tr><td>40</td><td>92</td><td>75</td><td>55</td></tr><tr><td>60</td><td>94</td><td>82</td><td>85</td></tr><tr><td>80</td><td>95</td><td>86</td><td>125</td></tr><tr><td>100</td><td>95</td><td>87</td><td>165</td></tr><tr><td>125</td><td>94</td><td>87</td><td>190</td></tr></tbody></table></div>	Load (%)	Efficiency (%)	P.F. (%)	Current (Amps)	25	89	60	45	40	92	75	55	60	94	82	85	80	95	86	125	100	95	87	165	125	94	87	190	Enclosure	TEFC			
	Load (%)	Efficiency (%)	P.F. (%)	Current (Amps)																													
	25	89	60	45																													
	40	92	75	55																													
	60	94	82	85																													
	80	95	86	125																													
	100	95	87	165																													
	125	94	87	190																													
	Construction	TFN																															
	Voltage	460#380 V																															
	Frequency	60 Hz																															
	Design	A																															
	LR Code letter	G																															
	Service Factor	1.15																															
	Temp Rise @ FL	75 ° C																															
	Duty	CONT																															
	Ambient	40 ° C																															
Elevation	1,000 feet																																
Rotor/Shaft wk ²	51.0 Lb-Ft ²																																
Ref Wdg	T4454205 NONE																																
Sound Pressure @ 1M	80 dBA																																
VFD Rating	NONE																																
Outline Dwg	B-SS513898-2025																																
Conn. Diag	A-EE7300BH																																
Additional Specifications:																																	
0																																	
0																																	
EQUIV CKT (OHMS / PHASE)																																	
R1	R2	X1	X2	Xm																													
0.0210	0.0120	0.1690	0.1570	4.3850																													

Speed -Torque Curve

