

PRODUCT INFORMATION PACKET

marathon®
Motors

Model No: 445TTFC6080

Catalog No: GT1150

125 HP General Purpose Motor, 3 phase, 1200 RPM, 575 V, 445T Frame, TEFC
General Purpose Motors



Regal and Marathon are trademarks of Regal Rexnord Corporation or one of its affiliated companies.
©2021 Regal Rexnord Corporation, All Rights Reserved. MC017097E

RegalRexnord

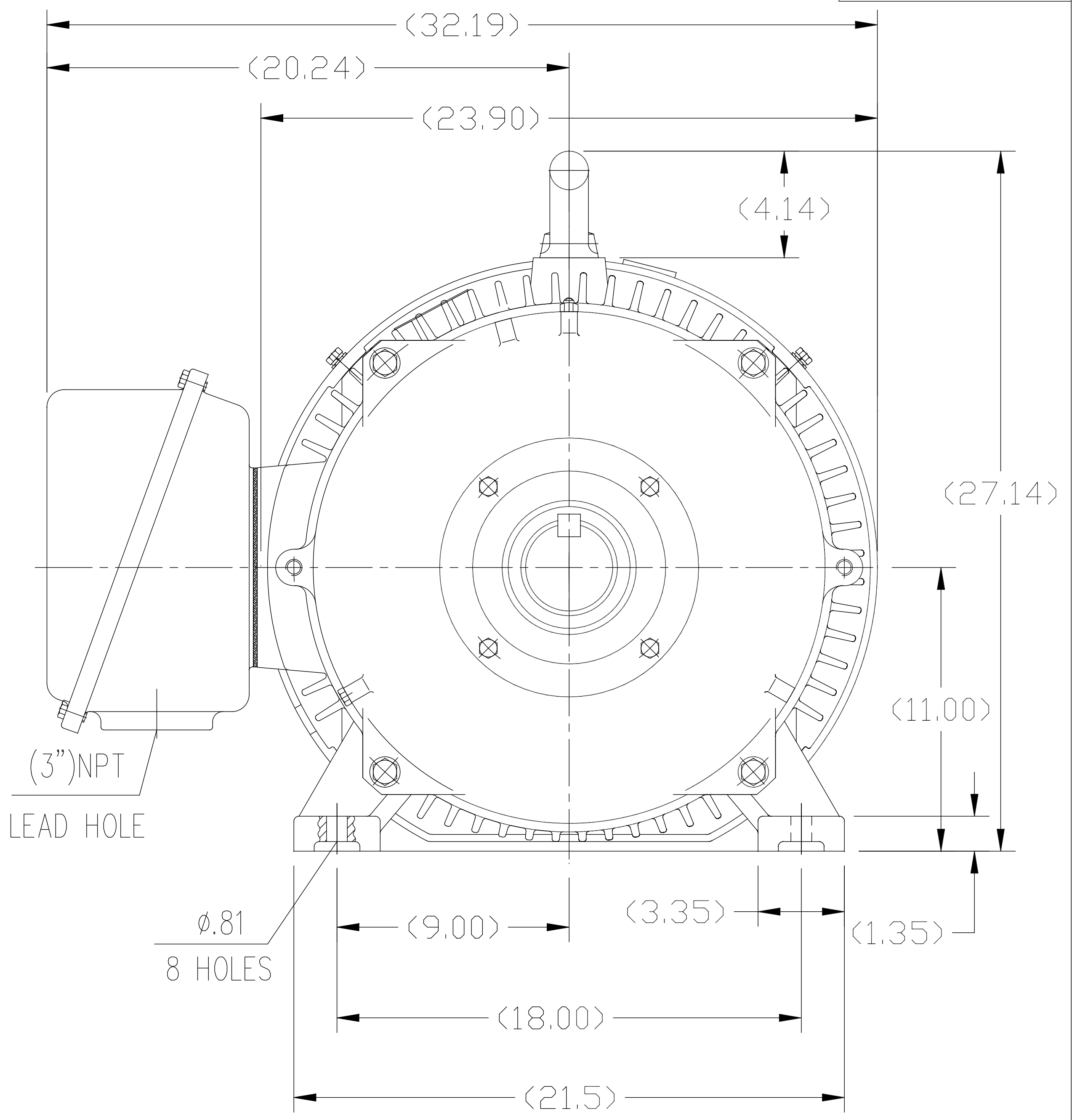
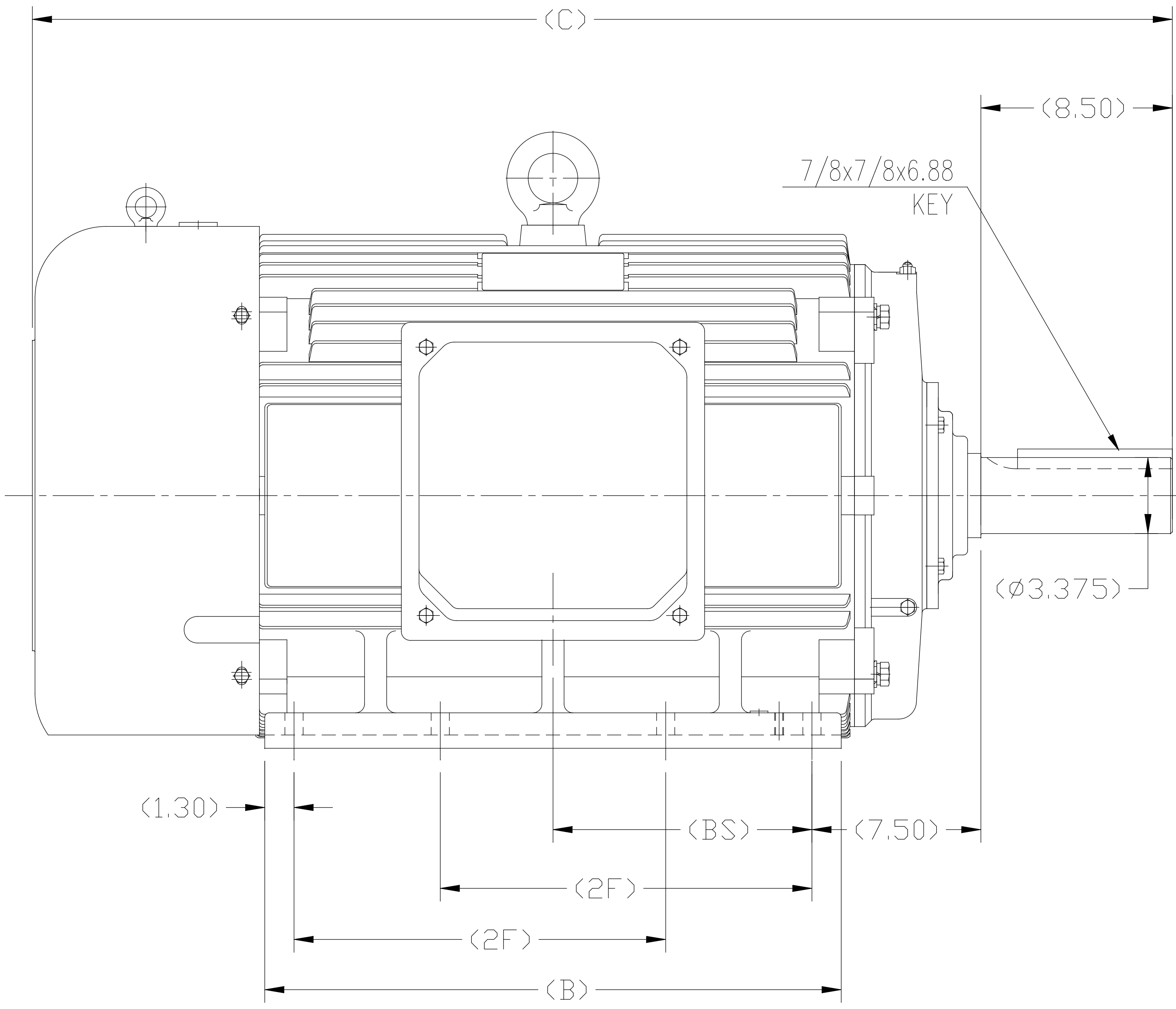
Nameplate Specifications

Output HP	125 Hp	Output KW	93.0 kW
Frequency	60 Hz	Voltage	575 V
Current	114.0 A	Speed	1188 rpm
Service Factor	1.15	Phase	3
Efficiency	95 %	Power Factor	86
Duty	Continuous	Insulation Class	F
Design Code	B	KVA Code	G
Frame	445T	Enclosure	Totally Enclosed Fan Cooled
Thermal Protection	No	Ambient Temperature	40 °C
Drive End Bearing Size	6319	Opp Drive End Bearing Size	6317
UL	Recognized	CSA	Y
CE	Y	IP Code	43
Number of Speeds	1		

Technical Specifications

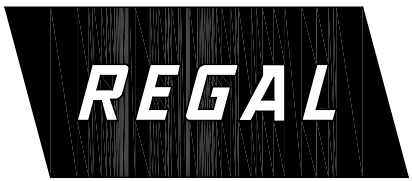
Electrical Type	Squirrel Cage Inverter Rated	Starting Method	Wye Start Delta Run Or Inverter
Poles	6	Rotation	Reversible
Resistance Main	.035 Ohms	Mounting	Rigid Base
Motor Orientation	Horizontal	Drive End Bearing	Ball
Opp Drive End Bearing	Ball	Frame Material	Cast Iron
Shaft Type	T	Overall Length	50.79 in
Shaft Diameter	3.375 in	Shaft Extension	8.5 in
Assembly/Box Mounting	F1/F2 CAPABLE		
Outline Drawing	SS620287-445T	Connection Drawing	A-EE7300

This is an uncontrolled document once printed or downloaded and is subject to change without notice. Date Created:10/12/2021



- 1. THIS MOTOR IS NOT DUAL DRILLED FOR 444T/445T OR 447T/449T
- 2. THIS MOTOR IS DRILLED FOR F1/F2 CAPABILITY

444T	50.79	25.60	14.50	11.50
445T	50.79	25.60	16.50	11.50
447T	55.91	30.70	20.00	14.06
449T	55.91	30.70	25.00	---
Frame	C	B	2F	BS

				TOLERANCES UNLESS SPECIFIED		 REGAL - BELOIT CORPORATION		DRAWN ZYH 02-20-2010		
				DEC.	INCHES			CHK HZJ 02-20-2010		
				.X	±.1			APPD CL 02-20-2010		
F	UPDATED DRAWING PER MARK-UP	ECD-0108274	WGJ 7-10-16	EMH	.XX	±.03	TITLE OUTLINE 444/445/447/449T FR-TEFC-CAST IRON		SCALE 1=6	
B	ADDED 'BS' DIM. UPDATED TITLE BLOCK	ECD-0048910	RFH 4-7-14	EH	.XXX	±.005			REF	
A	2 leads hole change to 1		CL 2010-9-8		.XXXX	±.0005	MAT'L.		FMF HWADA	
NO.	REVISION		BY & DATE	CHK	ANG	±1/2"	FINISH		PREV	
THIS DRAWING IN DESIGN AND DETAIL IS OUR PROPERTY AND MUST NOT BE USED EXCEPT IN CONNECTION WITH OUR WORK ALL RIGHTS OF DESIGN AND INVENTION ARE RESERVED THIS IS AN ELECTRONICALLY GENERATED DOCUMENT - DO NOT SCALE THIS PRINT				RFP		CAD FILE SS620287		SIZE	DRAWING NO.	REV.
				DIST				B	SS620287	F

THREE PHASE - SINGLE VOLTAGE MOTOR - CONDUIT BOX @ 'A'

TO REVERSE ROTATION:
INTERCHANGE ANY TWO
LINE LEAD CONNECTIONS.

TERMINAL BLOCK WHEN SPECIFIED



IF MOTOR HAS 6 LEADS



A-9806 DECAL

OPTIONAL CORD CONNECTION



VIEW OF TERMINAL END

DRAWING REVISION AB	REVISION BY JJB	DATE 06-27-2017
ECO ECO-0125361	APPROVED BY TB	DATE 06-27-2017
ECO DESCRIPTION UPDATED TO CURRENT STANDARDS		
<small>COPYRIGHT REGAL BELOIT AMERICA, INC. ALL RIGHTS RESERVED. PROPRIETARY AND CONFIDENTIAL INFORMATION - THIS DOCUMENT IS THE PROPERTY OF REGAL BELOIT AMERICA, INC. ("OWNER") AND CONTAINS OWNER'S PROPRIETARY INFORMATION. ANY PERSON, CORPORATION OR OTHER FIRM RECEIVING IT IS DEEMED, BY RECEIVING IT, TO AGREE THAT IT, AND/OR ANY PART OF IT, SHALL NOT BE DISCLOSED TO ANY PERSON, CORPORATION OR OTHER ENTITY, DUPLICATED, AND/OR USED, EXCEPT AS EXPRESSLY APPROVED IN WRITING IN ADVANCE BY OWNER. THIS DOCUMENT SHALL BE RETURNED TO OWNER UPON REQUEST. IT MAY BE SUBJECT TO CERTAIN RESTRICTIONS UNDER APPLICABLE EXPORT CONTROL LAWS AND REGULATIONS.</small>		

DRAWN BY DA
DATE 03-26-1993
APPROVED BY TB
DATE 03-26-1993
REFERENCE
THIRD ANGLE PROJECTION



Regal Beloit America, Inc.

DESCRIPTION
CONNECTION DIAGRAM
EXTERNAL - SINGLE VOLTAGE - 3Ø MOTOR

MATERIAL PROCESS/FINISH

SIZE A	DRAWING NUMBER EE7300	SHEET 1 OF 1
-----------	--------------------------	-----------------

CERTIFICATION DATA SHEET

Model#: 445TTFC6080 AA
CONN. DIAGRAM: A-EE7300
OUTLINE: B-SS620287

WINDING#: CHT44560001 NONE 4
ASSEMBLY: F1/F2 CAPABLE

TYPICAL MOTOR PERFORMANCE DATA

HP	KW	SYNC. RPM	F.L. RPM	FRAME	ENCLOSURE	KVA CODE	DESIGN
125	93	1200	1188	445T	TEFC	G	B

PH	Hz	VOLTS	FL AMPS	START TYPE	DUTY	INSL	S.F	AMB°C	ELEVATION
3	60	575	114	Y START D RUN OR INV	CONTINUOUS	F7	1.15/1.15	40	3300

FULL LOAD EFF: 95	3/4 LOAD EFF: 95	1/2 LOAD EFF: 94.5	GTD. EFF	ELEC. TYPE	NO LOAD AMPS
FULL LOAD PF: 86	3/4 LOAD PF: 85	1/2 LOAD PF: 80	94.1	SQ CAGE INV RATED	30

F.L. TORQUE	LOCKED ROTOR AMPS	L.R. TORQUE	B.D. TORQUE	F.L. RISE°C
552 LB-FT	725.6	1025 LB-FT 185	1250 LB-FT 225	75

SOUND PRESSURE @ 3 FT.	SOUND POWER	ROTOR WK^2	MAX. WK^2	SAFE STALL TIME	STARTS /HOUR	APPROX. MOTOR WGT
75 dBA	85 dBA	108 LB-FT^2	- LB-FT^2	25 SEC.	-	2750 LBS.

*** SUPPLEMENTAL INFORMATION ***

DE BRACKET TYPE	ODE BRACKET TYPE	MOUNT TYPE	ORIENTATION	SEVERE DUTY	HAZARDOUS LOCATION	DRIP COVER	SCREENS	PAINT
STANDARD	STANDARD	RIGID	HORIZONTAL	FALSE	NONE	FALSE	NONE	BLUE (ENAMEL)

BEARINGS		GREASE	SHAFT TYPE	SPECIAL DE	SPECIAL ODE	SHAFT MATERIAL	FRAME MATERIAL
DE	OPE						
BALL	BALL						
6319	6317	POLYREX EM	T	NONE	NONE	1045 HOT ROLLED (C-204)	CAST IRON

THERMO-PROTECTORS				THERMISTORS	CONTROL	SPACE /n HEATERS
THERMOSTATS	PROTECTORS	WDG RTDs	BRG RTDs			
NONE	NOT	NONE	NONE	NONE	FALSE	NONE VOLTS

If Inverter equals NONE, contact factory for further information

INVERTER TORQUE: VARIABLE 10:1
 INV. HP SPEED RANGE: NONE

ENCODER: NONE
 NONE NONE
 NONE NONE PPR

BRAKE: NONE NONE
 NONE P/N NONE
 NONE NONE
 NONE FT-LB NONE V NONE Hz

*
N
O
T
E
S
*

DATE: 06/21/2017 05:47:07 AM
 FORM 3531 REV.3 02/07/99
 ** Subject to change without notice.

Data Sheet

Date: 6/29/2017

Customer: _____

Attention: _____

Submitted by: FAREEDA DUDEKULA



445TTFC6080

Submittal

Data @ 575 V

Motor Load Data

Load	0%	25%	50%	75%	100%	115%	125%	LR	
Current (Amps)	30.0	40.0	61.6	86.4	114	132	144	726	
Torque (ft-lb)	0.00	137	274	413	552	636	693	1,025	
RPM	1200	1196	1194	1192	1188	1,186	1,184	0	
Efficiency (%)		92.4	94.5	95.0	95.0	95.0	94.5		
P.F. (%)	5.0	63.0	80.0	85.0	86.0	86.0	86.0	33.0	

Motor Speed Data

	LR	Pull-Up	BD	Rated	Idle																																									
Speed (RPM)	0	500	1150	1188	1200																																									
Current (Amps)	726	600	360	114	30.0																																									
Torque (ft-lb)	1,025	900	1,250	552	0.00																																									
<div><div>Efficiency (%)</div><div>P.F. (%)</div><div>Current (Amps)</div></div> <table><thead><tr><th>LOAD</th><th>Efficiency (%)</th><th>P.F. (%)</th><th>Current (Amps)</th></tr></thead><tbody><tr><td>0%</td><td></td><td></td><td>30.0</td></tr><tr><td>20%</td><td>92.0</td><td>63.0</td><td>35.0</td></tr><tr><td>40%</td><td>93.0</td><td>75.0</td><td>45.0</td></tr><tr><td>60%</td><td>94.0</td><td>83.0</td><td>60.0</td></tr><tr><td>80%</td><td>94.5</td><td>85.0</td><td>80.0</td></tr><tr><td>100%</td><td>94.8</td><td>86.0</td><td>100.0</td></tr><tr><td>120%</td><td>95.0</td><td>86.0</td><td>120.0</td></tr><tr><td>125%</td><td></td><td></td><td>144.0</td></tr></tbody></table>						LOAD	Efficiency (%)	P.F. (%)	Current (Amps)	0%			30.0	20%	92.0	63.0	35.0	40%	93.0	75.0	45.0	60%	94.0	83.0	60.0	80%	94.5	85.0	80.0	100%	94.8	86.0	100.0	120%	95.0	86.0	120.0	125%			144.0					
						LOAD	Efficiency (%)	P.F. (%)	Current (Amps)																																					
						0%			30.0																																					
						20%	92.0	63.0	35.0																																					
						40%	93.0	75.0	45.0																																					
						60%	94.0	83.0	60.0																																					
						80%	94.5	85.0	80.0																																					
						100%	94.8	86.0	100.0																																					
						120%	95.0	86.0	120.0																																					
						125%			144.0																																					
						HP					125.0																																			
						Sync. RPM					1200																																			
						Frame					445																																			
						Enclosure					TEFC																																			
						Construction					TFC																																			
						Voltage					575 V																																			
						Frequency					60 Hz																																			
Design					A																																									
LR Code letter					G																																									
Service Factor					1.15																																									
Temp Rise @ FL					75 ° C																																									
Duty					CONT																																									
Ambient					40 ° C																																									
Elevation					1,000 feet																																									
Rotor/Shaft wk²					108 Lb-Ft²																																									
Ref Wdg					CHT44560001 NONE																																									
Sound Pressure @ 1M					75 dBA																																									
VFD Rating					VARIABLE 10:1																																									
Outline Dwg					B-SS620287																																									
Conn. Diag					A-EE7300																																									
Additional Specifications:																																														
0																																														
0																																														
EQUIV CKT (OHMS / PHASE)																																														
R1		R2		X1	X2	Xm																																								
0.0390		0.0260		0.2940	0.4970	10.9950																																								

Speed -Torque Curve

