

PRODUCT INFORMATION PACKET

Model No: 445TTDS9477

Catalog No: Y213

Other Purpose Motor, 100 HP, 3 Ph, 60 Hz, 460/796 V, 1200 RPM, 445T Frame, DP



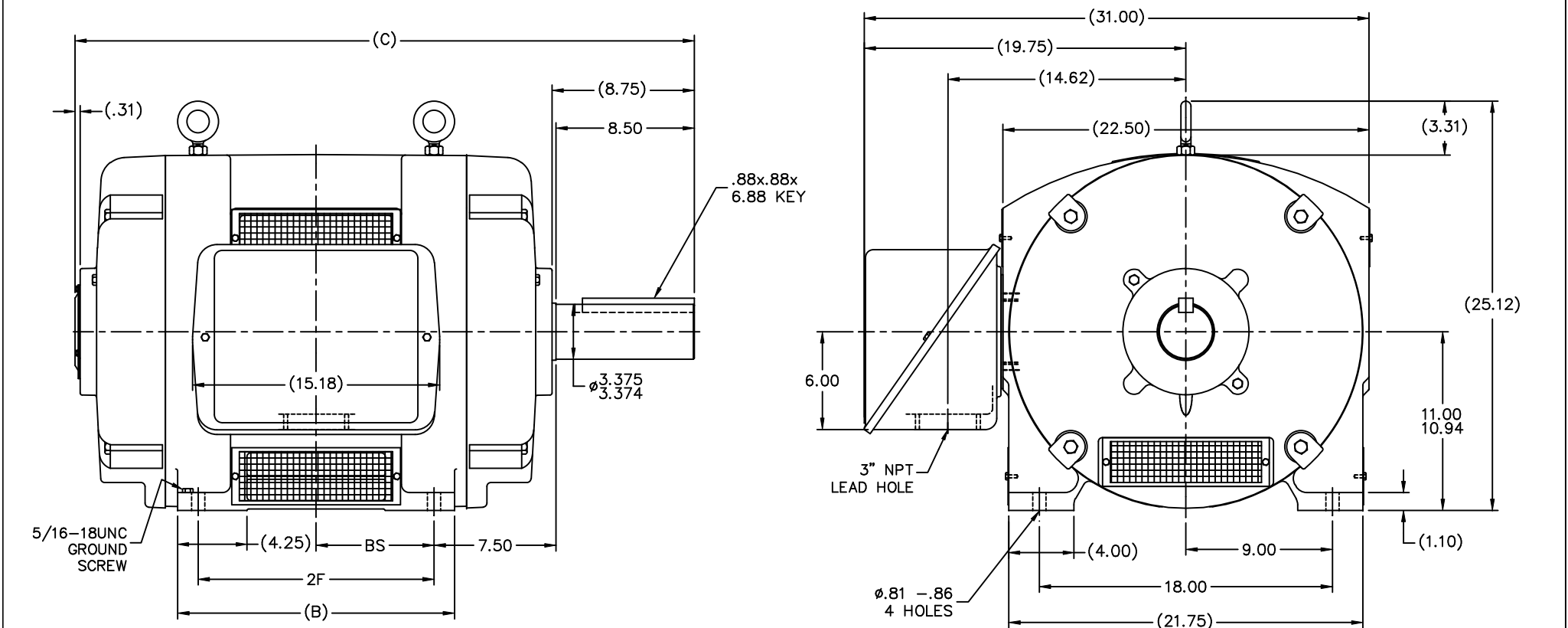
Regal and are trademarks of Regal Rexnord Corporation or one of its affiliated companies.
©2022 Regal Rexnord Corporation, All Rights Reserved. MC017097E

Nameplate Specifications

Output HP	100 Hp	Output KW	75.0 kW
Frequency	60 Hz	Voltage	460/796 V
Current	124.0/71.5 A	Speed	1120 rpm
Service Factor	1.15	Phase	3
Efficiency	88.5 %	Power Factor	87
Duty	Oil Well	Insulation Class	F
Design Code	D	KVA Code	G
Frame	445T	Enclosure	Drip Proof
Thermal Protection	No Protection	Ambient Temperature	40 °C
Drive End Bearing Size	6318	Opp Drive End Bearing Size	6316
UL	No	CSA	N
CE	N	IP Code	22
Number of Speeds	1		

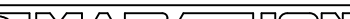
Technical Specifications

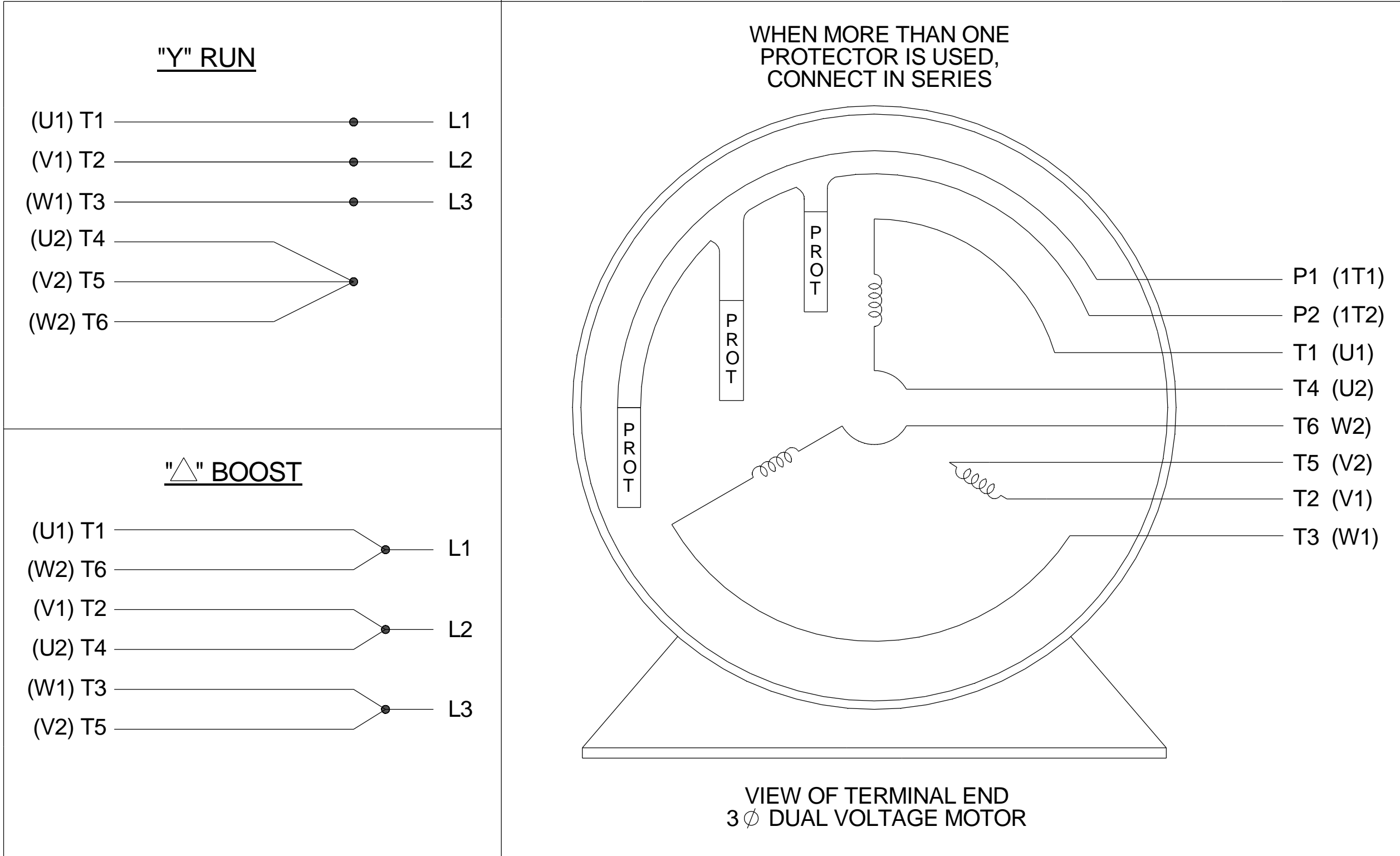
Electrical Type	Squirrel Cage Induction Run	Starting Method	Across The Line
Poles	6	Rotation	Reversible
Resistance Main	.082 Ohms	Mounting	Rigid Base
Motor Orientation	Horizontal	Drive End Bearing	Ball
Opp Drive End Bearing	Ball	Frame Material	Cast Iron
Shaft Type	T	Overall Length	40.06 in
Frame Length	20.50 in	Shaft Diameter	3.375 in
Shaft Extension	8.5 in	Assembly/Box Mounting	F2/F1 Capable
Outline Drawing	B-SS513939-2050	Connection Drawing	A-EE7304H



- NOTES:
1. CONDUIT BOX CAN BE ROTATED IN 90° STEPS.
 2. CONDUIT BOX CAN BE MOUNTED ON OPPOSITE SIDE BY REMOVING BRACKETS AND TURNING FRAME 180°.
 3. NAMEPLATES TO BE READ FROM CONDUIT BOX SIDE OF MOTOR.

3. NAMEPLATES TO BE READ FROM CONDUIT BOX SIDE OF MOTOR. (B-SS509751)

										TOLERANCES UNLESS SPECIFIED				DRAWN DA 02-06-1991			
														CHK TB 02-06-1991			
						5 CORRECTED FRAME & C'BOX MU45547		KL 05-13-2003		JES DEC. INCHES				APPD ML 02-06-1991			
						4 3" NPT WAS Ø2.50 NPT CN 28405		DRS 11-13-2002		.X ±.1							
						3 REV'D CONDUIT BOX GEOMETRY		NJS 02-17-2000		.XX ±.03		TITLE OUTLINE - THREADED C'BOX - DR.PR. 440T FR. - SCREENED - GROUND SCREW		SCALE 11=64			
						2 ADDED OVERALL DIMENSIONS CN27400-827		BJW 01-17-2000		.XXX ±.005				REF (OIL WELL DUTY)			
						1 NEW DRAWING CN13005		DA 02-06-1991		.XXXX ±.0005		MAT'L		FIM			
						NO. REVISION		BY & DATE		CHK ANG ±730"		FINISH		PREV			
						THIS DRAWING IN DESIGN AND DETAIL IS OUR PROPERTY AND MUST NOT BE USED EXCEPT IN CONNECTION WITH OUR WORK. ALL RIGHTS OF DESIGN AND INVENTION ARE RESERVED.		RFP		CAD FILE S5513939		SIZE B		DRAWING NO. S5513939		PAGE OF 5	
						THIS IS AN ELECTRONICALLY GENERATED DOCUMENT - DO NOT SCALE THIS PRINT		DIST WA									
DASH	FRAME	B	C	2F	BS												
1850	444T	17.00	38.06	14.50	7.25												
2050	445T	19.00	40.06	16.50	8.25												



DRAWING REVISION A	REVISION BY HV	DATE 12-17-2014	TOLERANCES UNLESS OTHERWISE SPECIFIED: <div><div>DEC.</div><div>INCH</div><div>mm</div><div>ANGLE</div></div> <div><div>.X</div><div>±0.1</div><div>[±2.5]</div><div>±0.5°</div></div> <div><div>.XX</div><div>±0.01</div><div>[±0.25]</div><div></div></div> <div><div>XXX</div><div>±0.005</div><div>[±0.127]</div><div></div></div> <div><div>.XXXX</div><div>±0.0005</div><div>[±0.0127]</div><div></div></div> <div>REMOVE BURRS & BREAK SHARP</div> <div>EDGES: .003/.015 [0.076/.381]</div> <div>CORNER FILLETS: .02 [.51]</div> <div>MACHINED SURFACES: 125 INCH ✓ mm ✓</div> <div>mm SHOWN IN [BRACKETS]</div>	DRAWN BY BLR	<div><div></div><div>Regal Beloit America, Inc.</div></div>		
ECO ECO-0065198	APPROVED BY EMH	DATE 12-17-2014		DATE 03-07-1998	DESCRIPTION		
ECO DESCRIPTION REDRAWN IN SOLIDWORKS, REMOVED GRND. NOTE				APPROVED BY ML	CONN DIAGRAM-EXTERNAL		
<div>COPYRIGHT REGAL BELOIT AMERICA, INC. ALL RIGHTS RESERVED. PROPRIETARY AND CONFIDENTIAL INFORMATION - THIS DOCUMENT IS THE PROPERTY OF REGAL BELOIT AMERICA, INC. ("OWNER") AND CONTAINS OWNER'S PROPRIETARY INFORMATION. ANY PERSON, CORPORATION OR OTHER FIRM RECEIVING IT IS DEEMED, BY RECEIVING IT, TO AGREE THAT IT, AND/OR ANY PART OF IT, SHALL NOT BE DISCLOSED TO ANY PERSON, CORPORATION OR OTHER ENTITY, DUPLICATED, AND/OR USED, EXCEPT AS EXPRESSLY APPROVED IN WRITING IN ADVANCE BY OWNER. THIS DOCUMENT SHALL BE RETURNED TO OWNER UPON REQUEST. IT MAY BE SUBJECT TO CERTAIN RESTRICTIONS UNDER APPLICABLE EXPORT CONTROL LAWS AND REGULATIONS.</div>				DATE 03-23-1998	DUAL VOLTAGE - 3 PHASE - 6 LEAD DELTA - Y		
				REFERENCE	MATERIAL	PROCESS/FINISH	
				THIRD ANGLE PROJECTION	<div><div>SIZE</div><div>A</div></div>	DRAWING NUMBER EE7304H	SHEET 1 OF 1