

PRODUCT INFORMATION PACKET

marathon®
Motors

Model No: 445TTDS6060

Catalog No: E925

XRI® General Purpose General Purpose Motor, 200 & 200 HP, 3 Ph, 60 & 50 Hz, 460 & 380 V,
1800 & 1500 RPM, 445T Frame, DP



Regal and Marathon are trademarks of Regal Rexnord Corporation or one of its affiliated companies.

©2023 Regal Rexnord Corporation, All Rights Reserved. MC017097E

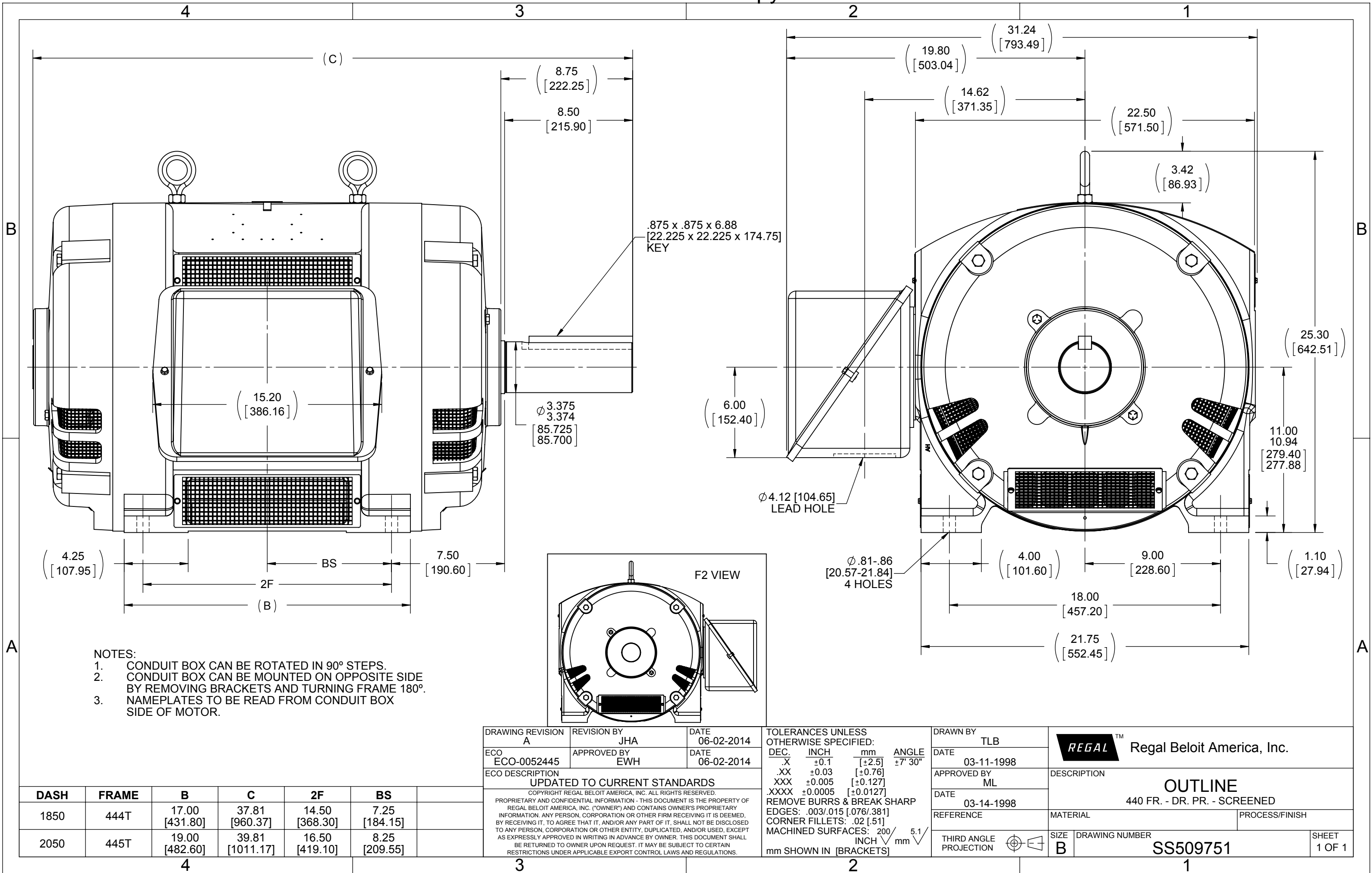
RegalRexnord

Nameplate Specifications

Phase	3	Output HP	200 & 200 Hp
Output KW	149.0 & 149.0 kW	Voltage	460 & 380 V
Speed	1785 & 1475 rpm	Service Factor	1.15 & 1.0
Frame	445T	Enclosure	Drip Proof
Thermal Protection	No Protection	Efficiency	95.8 & 95 %
Ambient Temperature	40 °C	Frequency	60 & 50 Hz
Current	225 & 275 A	Power Factor	86.5
Duty	Continuous	Insulation Class	F
Design Code	B	KVA Code	G
Drive End Bearing Size	6318	Opp Drive End Bearing Size	6316
UL	Recognized	CSA	Y
CE	Y	IP Code	12
Number of Speeds	1		

Technical Specifications

Electrical Type	Squirrel Cage Induction Run	Starting Method	Part Wdg Start & Wye Start Delta Run
Poles	4	Rotation	Reversible
Resistance Main	.021 Ohms	Mounting	Rigid Base
Motor Orientation	Horizontal	Drive End Bearing	Ball
Opp Drive End Bearing	Ball	Frame Material	Cast Iron
Shaft Type	T	Overall Length	39.81 in
Frame Length	20.50 in	Shaft Diameter	3.375 in
Shaft Extension	8.75 in	Assembly/Box Mounting	F1/F2 Capable
Connection Drawing	A-EE7300BH	Outline Drawing	B-SS509751-2050





				TOLERANCES UNLESS SPECIFIED		 REGAL-BELOIT CORPORATION	DRAWN RJW 02-11-2005					
				DEC.	INCHES		CHK	ML 02-11-2005				
				.X	±.1		APPD	GK 02-11-2005				
				.XX	±.02		TITLE CONNECTION DIAGRAM 12 LEAD- SINGLE VOLTAGE			SCALE		
D	CHANGED TO REGAL TITLE BLOCK	ECO-0108299	WGJ 08/22/2016	EMH	.XXX	±.005				REF		
1	ADDED IEC TERMINAL MARKINGS	CN 41429	JJB 05/24/2007	ML	.XXXX	±.0005	MAT'L.			FMF		
NO.	REVISION		BY & DATE	CHK	ANG	±7'30"	FINISH				PREV	
THIS DRAWING IN DESIGN AND DETAIL IS OUR PROPERTY AND MUST NOT BE USED EXCEPT IN CONNECTION WITH OUR WORK ALL RIGHTS OF DESIGN AND INVENTION ARE RESERVED THIS IS AN ELECTRONICALLY GENERATED DOCUMENT - DO NOT SCALE THIS PRINT				RFP		02-11-2005	CAD FILE ee7300bh		SIZE A	DRAWING NO. EE7300BH	PAGE OF	REV. C
				DIST		LB						

CERTIFICATION DATA SHEET

Model#: 445TTDS6060 CP
 CONN. DIAGRAM: A-EE7300BH
 OUTLINE: B-SS509751-2050

WINDING#: T445466 NONE 1
 ASSEMBLY: F1/F2 CAPABLE

TYPICAL MOTOR PERFORMANCE DATA

HP	KW	SYNC. RPM	F.L. RPM	FRAME	ENCLOSURE	KVA CODE	DESIGN
200&200	149&149	1800	1785&1475	445T	DP	G	B

PH	Hz	VOLTS	FL AMPS	START TYPE	DUTY	INSL	S.F	AMB°C	ELEVATION
3	60/50	460#380	225&275	PWS & YDRUN	CONTINUOU S	F1	1.15/1.0	40	3300

FULL LOAD EFF: 95.8&95	3/4 LOAD EFF: 96	1/2 LOAD EFF: 95.8	GTD. EFF	ELEC. TYPE	NO LOAD AMPS
FULL LOAD PF: 86.5&87	3/4 LOAD PF: 85	1/2 LOAD PF: 79.5	95.4	SQ CAGE IND RUN	61

F.L. TORQUE	LOCKED ROTOR AMPS	L.R. TORQUE	B.D. TORQUE	F.L. RISE°C
589 LB-FT	1425	850 LB-FT 144	1425 LB-FT 242	45

SOUND PRESSURE @ 3 FT.	SOUND POWER	ROTOR WK^2	MAX. WK^2	SAFE STALL TIME	STARTS /HOUR	APPROX. MOTOR WGT
80 dBA	90 dBA	46 LB-FT^2	1000 LB-FT^2	20 SEC.	2	1450 LBS.

*** SUPPLEMENTAL INFORMATION ***

DE BRACKET TYPE	ODE BRACKET TYPE	MOUNT TYPE	ORIENTATION	SEVERE DUTY	HAZARDOUS LOCATION	D RIP COVER	SCREENS	PAINT
STANDARD	STANDARD	RIGID	HORIZONTAL	FALSE	NONE	FALSE	NONE	GRAY (ENAMEL)

BEARINGS		GREASE	SHAFT TYPE	SPECIAL DE	SPECIAL ODE	SHAFT MATERIAL	FRAME MATERIAL
DE	OPE						
BALL	BALL	POLYREX EM	T	NONE	NONE	1045 HOT ROLLED (C-204)	CAST IRON
6318	6316						

THERMO-PROTECTORS				THERMISTORS	CONTROL	SPACE /n HEATERS
THERMOSTATS	PROTECTORS	WDG RTDs	BRG RTDs			
NONE	NOT	NONE	NONE	NONE	FALSE	NONE VOLTS

If Inverter equals NONE, contact factory for further
information

INVERTER TORQUE: NONE
 INV. HP SPEED RANGE: NONE

ENCODER: NONE
 NONE NONE
 NONE NONE PPR

BRAKE: NONE NONE
 NONE P/N NONE
 NONE NONE
 NONE FT-LB NONE V NONE Hz

*
N
O
T
E
S
*

DATE: 06/21/2017 05:44:57 AM
 FORM 3531 REV.3 02/07/99
 ** Subject to change without notice.

Data Sheet

Date: 19-06-2017

Customer:

Attention:

Submitted by: FAREEDA DUDEKULA



445TTDS6060

Submittal

Data @ 460 V

Motor Load Data

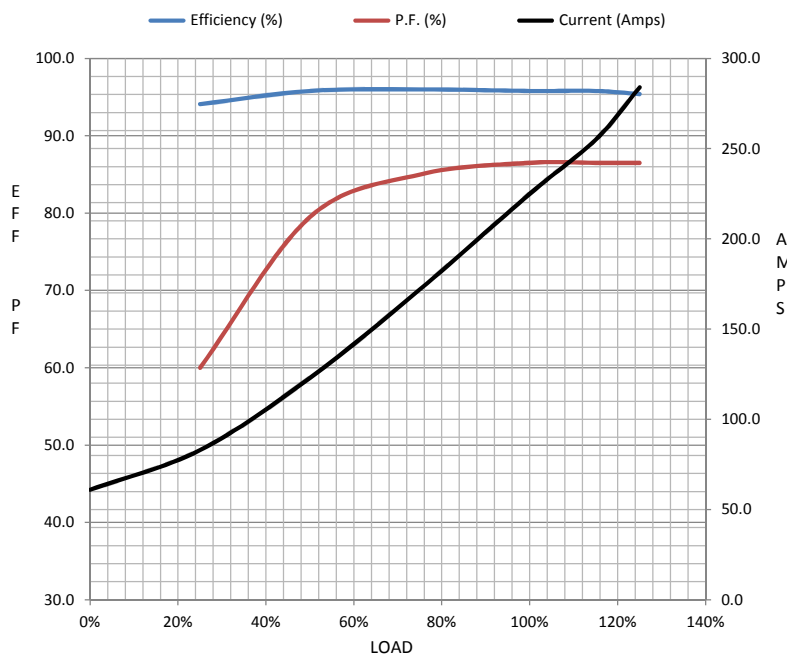
Load	0%	25%	50%	75%	100%	115%	125%	LR	
Current (Amps)	61.0	83.0	123	172	225	255	284	1,425	
Torque (ft-lb)	0.00	146	293	440	589	664	738	850	
RPM	1800	1796	1792	1788	1785	1,780	1778	0	
Efficiency (%)		94.1	95.8	96.0	95.8	95.8	95.4		
P.F. (%)	4.0	60.0	79.5	85.0	86.5	86.5	86.5	28.0	

Motor Speed Data

	LR	Pull-Up	BD	Rated	Idle
Speed (RPM)	0	900	1725	1785	1800
Current (Amps)	1,425	1,250	775	225	61.0
Torque (ft-lb)	850	875	1,425	589	0.00

Information Block

HP	200.0			
Sync. RPM	1800			
Frame	445			
Enclosure	DP			
Construction	TDS			
Voltage	460#380 V			
Frequency	60 Hz			
Design	A			
LR Code letter	G			
Service Factor	1.15			
Temp Rise @ FL	45 ° C			
Duty	CONT			
Ambient	40 ° C			
Elevation	1,000 feet			
Rotor/Shaft wk²	46.0 Lb-Ft²			
Ref Wdg	T445466 NONE			
Sound Pressure @ 1M	80 dBA			
VFD Rating	NONE			
Outline Dwg	B-SS509751-2050			
Conn. Diag	A-EE7300BH			
Additional Specifications:				
0				
365THFS8036				
EQUIV CKT (OHMS / PHASE)				
R1	R2	X1	X2	Xm
0.0110	0.0090	0.1520	0.1420	3.9380



Speed - Torque Curve

