

# PRODUCT INFORMATION PACKET



Model No: 445TSTFN16813  
Catalog No: 445TSTFN16813  
150,3000,TEFC,445TSCV,3/50/400

Regal and Marathon are trademarks of Regal Rexnord Corporation or one of its affiliated companies.  
©2023 Regal Rexnord Corporation, All Rights Reserved. MC017097E



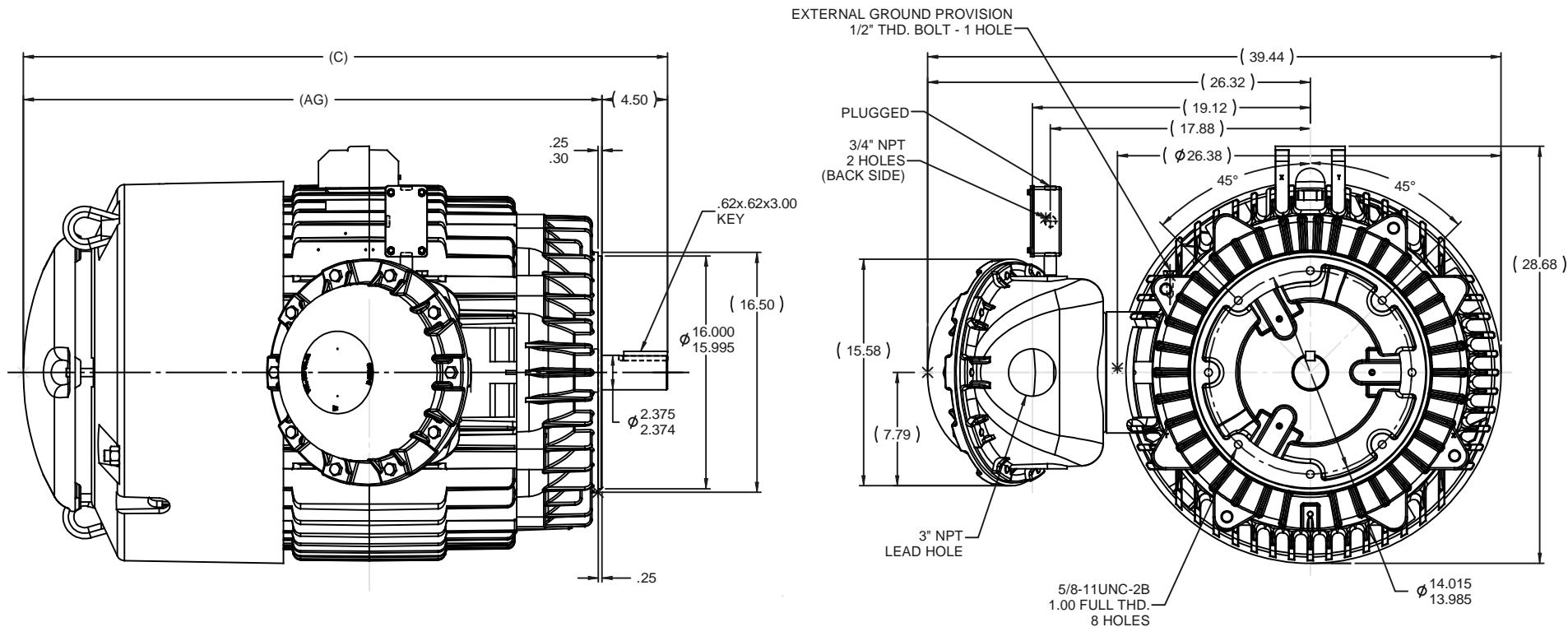
**Nameplate Specifications**

Phase	3	Output HP	150 Hp
Output KW	112.0 kW	Voltage	400 V
Speed	2978 rpm	Service Factor	1
Frame	445TSCV	Enclosure	Totally Enclosed Fan Cooled
Thermal Protection	No Protection	Efficiency	95.4 %
Ambient Temperature	50 °C	Frequency	50 Hz
Current	194.0 A	Power Factor	88
Duty	Continuous (S1)	Insulation Class	F
Design Code	B	KVA Code	G
Drive End Bearing Size	6313	Opp Drive End Bearing Size	6313
UL	No	CSA	Y
CE	Y	IP Code	56
Number of Speeds	1	Hazardous Location	ATEX ZONE 2 / ZONE 22

**Technical Specifications**

Electrical Type	Squirrel Cage Induction Run	Starting Method	Across The Line
Poles	2	Rotation	Reversible
Resistance Main	.0128 Ohms	Mounting	Round
Motor Orientation	Shaft Down	Drive End Bearing	Ball
Opp Drive End Bearing	Ball	Frame Material	Cast Iron
Shaft Type	TS	Assembly/Box Mounting	F1/F2 CAPABLE
Outline Drawing	B-SS552658-2025	Connection Drawing	A-EE7300AP

This is an uncontrolled document once printed or downloaded and is subject to change without notice. Date Created:08/24/2023

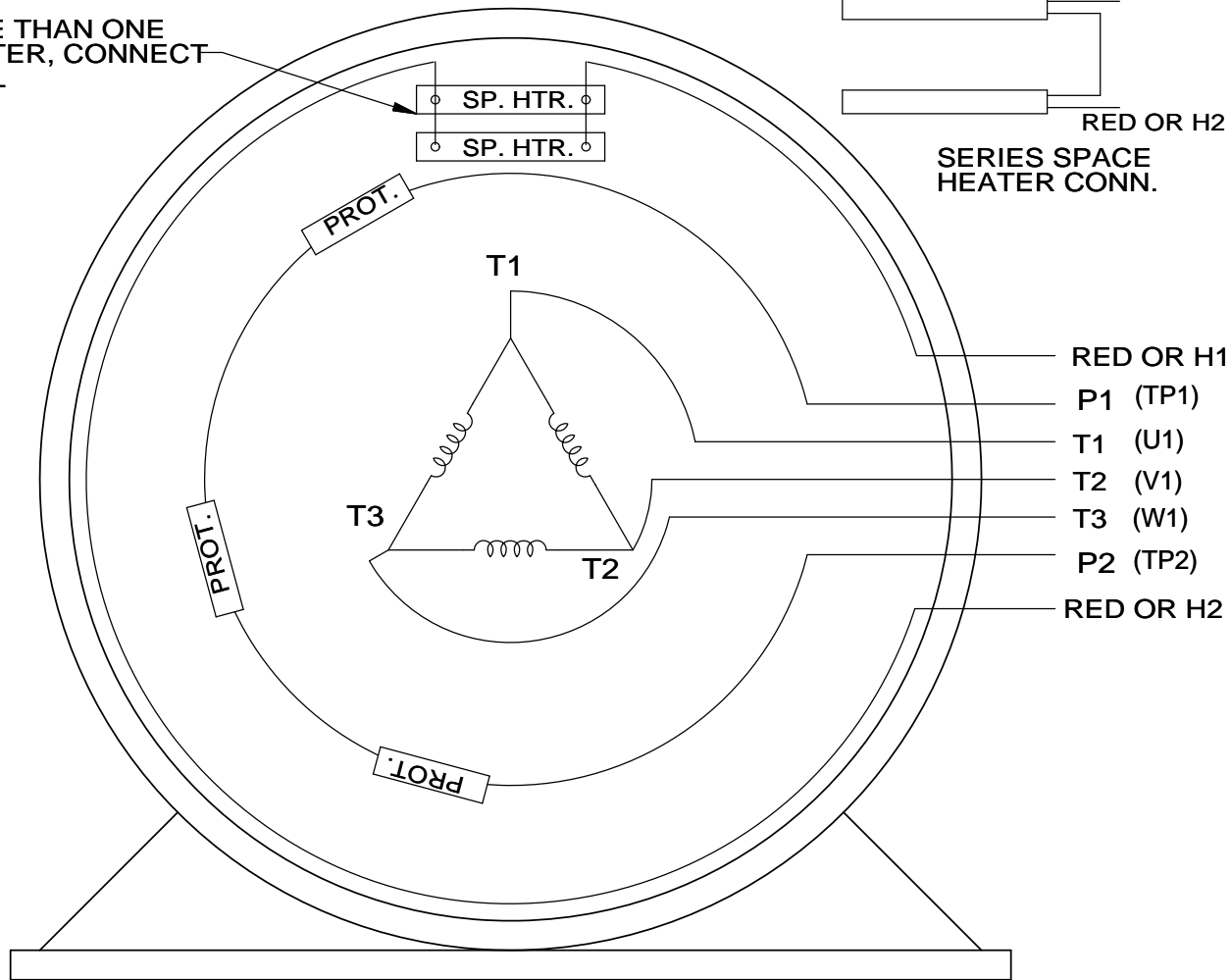


NOTE:  
 1. CONDUIT BOX CAN BE ROTATED IN 90° STEPS.  
 2. NAMEPLATES TO BE READ FROM CONDUIT BOX SIDE OF THE MOTOR.

DASH	FRAME	C	AG	BV
2025	445TSCV	44.30	39.80	16.00

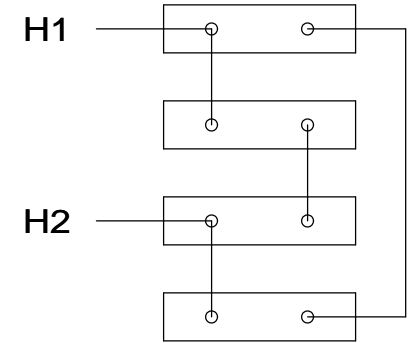
				TOLERANCES UNLESS SPECIFIED	MARATHON ELECTRIC	DRAWN RWR 09-06-2007
				DEC INCHES		CHK ML 09-07-2007
				X ±.1	TITLE OUTLINE - TEFC 445TSCV FRAME - SEVERE DUTY	APPR JES 09-07-2007
				XX ±.03		SCALE 1:7
				XXX ±.005	MATL	REF B-SS514956
				XXXX ±.0005		FMF MU81377
1	(C) DIM. WAS 41.81 & (AG) DIM. WAS 37.31	ISAAC 09-0167	JJB 01/15/2009	CHK ANG ±7°30'	FINISH	PAGE OF
NO REVISION				BY & DATE		
THIRD ANGLE PROJECTION				RFP 09-07-2007	PREV	SIZE DRAWING NO
				NETWORK FILE NAME SS552658		B SS552658
						REV 1

WHEN MORE THAN ONE  
SPACE HEATER, CONNECT  
IN PARALLEL

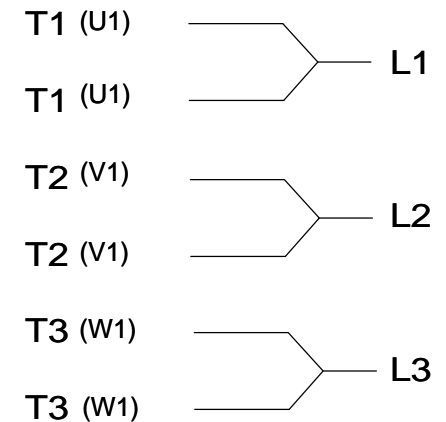


SERIES SPACE  
HEATER CONN.

SPACE HEATERS  
CONNECTED IN  
SERIES PARALLEL



IF MOTOR OR GEN.  
HAS 6 LEADS



NOTE:  
THERMO-PROTECTORS  
CONNECTED IN SERIES

VIEW OF TERMINAL END

DRAWING REVISION J	REVISION BY JHA	DATE 03-06-2017
ECO ECO-0119314	APPROVED BY DJK	DATE 03-06-2017

ECO DESCRIPTION

UPDATED TO SOLIDWORKS

TOLERANCES UNLESS  
OTHERWISE SPECIFIED:

DEC.	INCH	mm	ANGLE
.X	±0.1	[±2.5]	±7' 30"
.XX	±0.02	[±0.51]	
.XXX	±0.005	[±0.127]	
.XXXX	±0.0005	[±0.0127]	

REMOVE BURRS & BREAK SHARP  
EDGES: .003/.015 [.076/.381] X 45°  
CORNER FILLETS: R.02 [.51]

MACHINED SURFACES: 200  
INCH  
mm

mm SHOWN IN [BRACKETS]

DRAWN BY  
KL

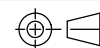
DATE  
10-08-1993

APPROVED BY  
TB

DATE  
10-12-1993

REFERENCE

THIRD ANGLE  
PROJECTION



Regal Beloit America, Inc.

DESCRIPTION

CONN DIAGRAM-EXTERNAL

3 PHASE - SINGLE VOLTAGE - WITH SPACE HEATERS

MATERIAL

PROCESS/FINISH

SIZE  
A

DRAWING NUMBER

EE7300AP

SHEET  
1 OF 1