

PRODUCT INFORMATION PACKET

Model No: 445TSHFCD9042
Catalog No: W117-P
200,1800,TEFC,445TSCV,3/60/460

Regal and are trademarks of Regal Rexnord Corporation or one of its affiliated companies.
©2022 Regal Rexnord Corporation, All Rights Reserved. MC017097E

Nameplate Specifications

Technical Specifications

Outline Drawing	SS621015	Connection Drawing	EE7300
-----------------	----------	--------------------	--------

This is an uncontrolled document once printed or downloaded and is subject to change without notice. Date Created:08/09/2022

4

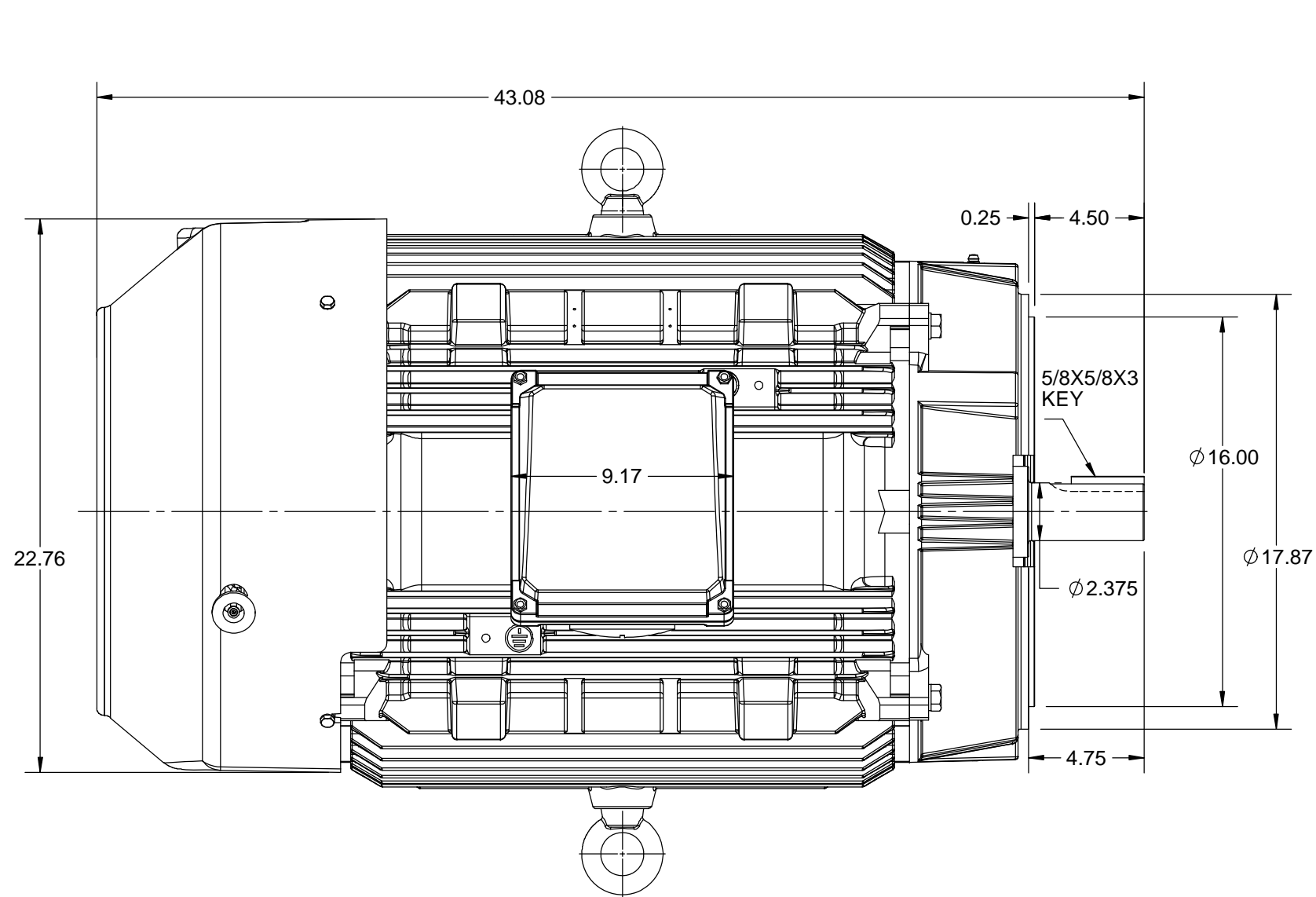
3

2

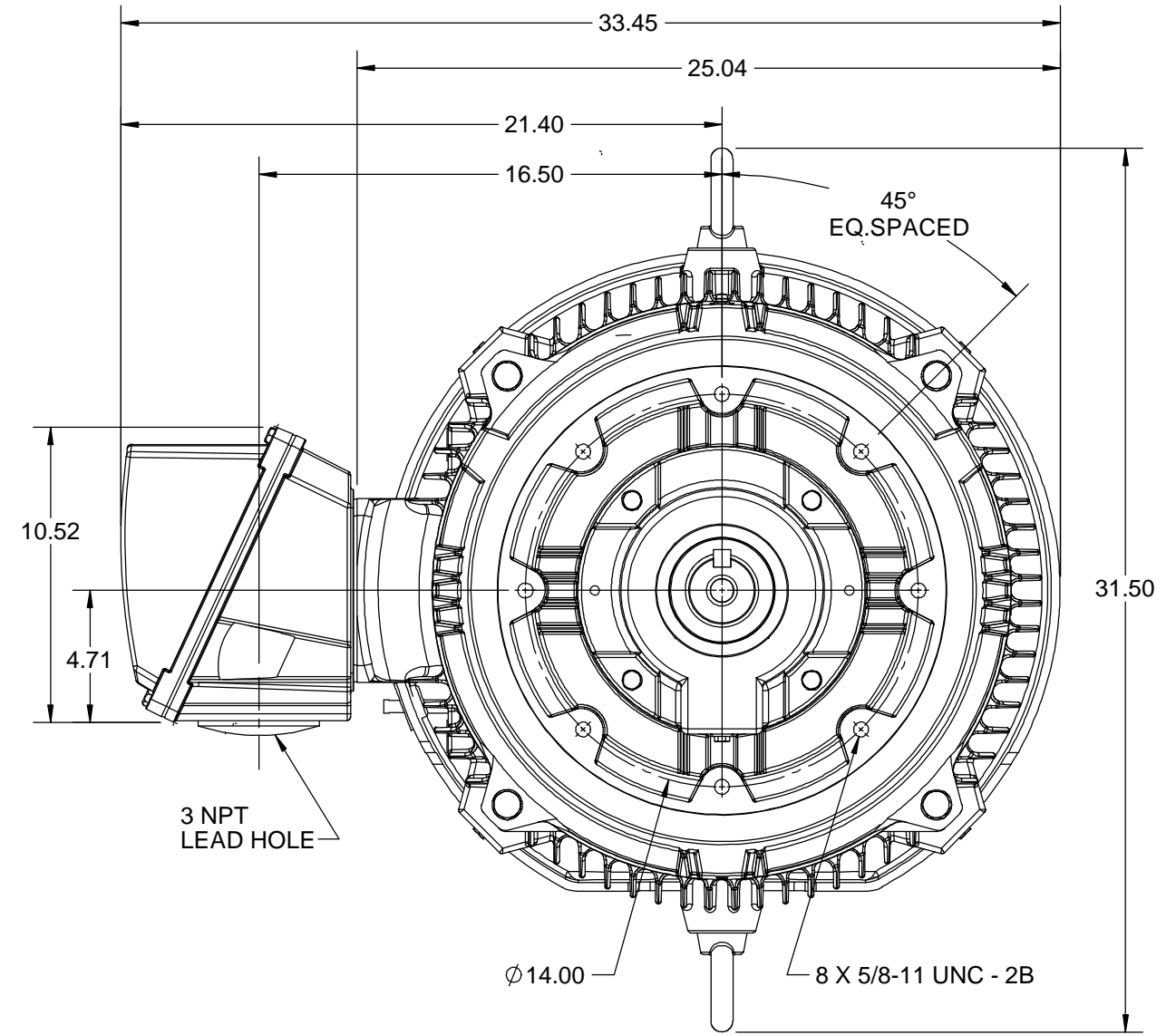
1

OUTLINE

B



B




A

A

DRAWING REVISION B	REVISION BY VS	DATE 27/08/2020
ECO ECO-0191272	APPROVED BY SBD	DATE 27/08/2020
ECO DESCRIPTION DRAWING VIEWS UPDATED		
COPYRIGHT REGAL BELOIT AMERICA, INC. ALL RIGHTS RESERVED. PROPRIETARY AND CONFIDENTIAL INFORMATION - THIS DOCUMENT IS THE PROPERTY OF REGAL BELOIT AMERICA, INC. ("OWNER") AND CONTAINS OWNER'S PROPRIETARY INFORMATION. ANY PERSON, CORPORATION OR OTHER FIRM RECEIVING IT IS DEEMED, BY RECEIVING IT, TO AGREE THAT IT, AND/OR ANY PART OF IT, SHALL NOT BE DISCLOSED TO ANY PERSON, CORPORATION OR OTHER ENTITY, DUPLICATED, AND/OR USED, EXCEPT AS EXPRESSLY APPROVED IN WRITING IN ADVANCE BY OWNER. THIS DOCUMENT SHALL BE RETURNED TO OWNER UPON REQUEST. IT MAY BE SUBJECT TO CERTAIN RESTRICTIONS UNDER APPLICABLE EXPORT CONTROL LAWS AND REGULATIONS.		



DRAWN BY BISWA	 Regal Beloit America, Inc.	
DATE 14/04/2020		
APPROVED BY SBD	DESCRIPTION OUTLINE	
DATE 14/04/2020	444/445TSC FR-NEMA-SD & IEEE841-VERTICAL APPLICATION	
REFERENCE	MATERIAL	PROCESS/FINISH
THIRD ANGLE PROJECTION	SIZE B	DRAWING NUMBER SS621015
		SHEET 1 OF 1

4

3

2

1

THREE PHASE - SINGLE VOLTAGE
MOTOR - CONDUIT BOX @ 'A'

TO REVERSE ROTATION:
INTERCHANGE ANY TWO LINE
LEAD CONNECTIONS

TERMINAL BLOCK WHEN SPECIFIED

IF MOTOR HAS 9 LEADS

T1(U1) T1(U1) T1(U1) → L1

T2(V1) T2(V1) T2(V1) → L2

T3(W1) T3(W1) T3(W1) → L3

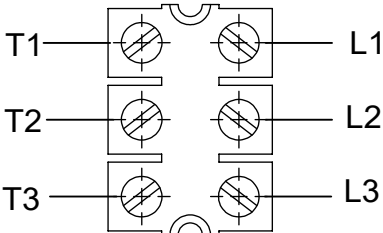
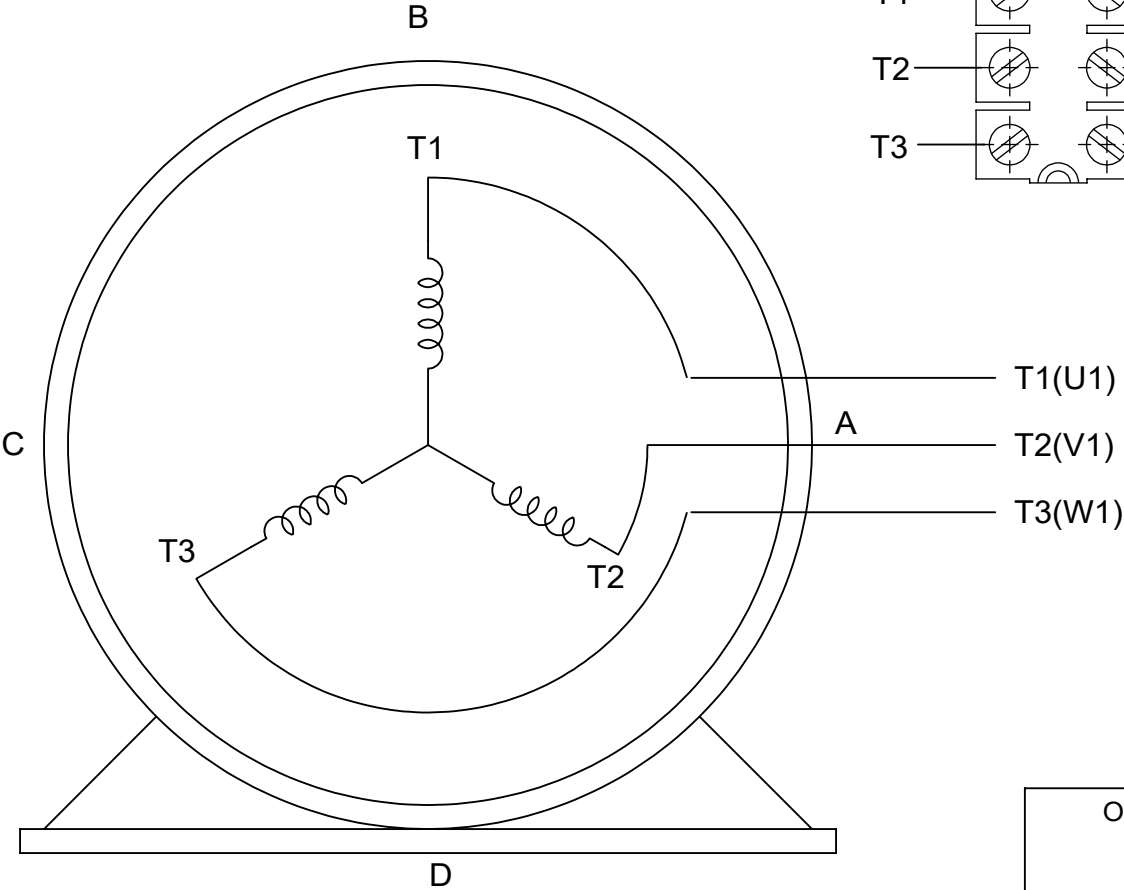
IF MOTOR HAS 6 LEADS

T1(U1) T1(U1) → L1

T2(V1) T2(V1) → L2

T3(W1) T3(W1) → L3

A-9806 DECAL



OPTIONAL CORD CONNECTION	
L1	WHITE
L2	RED
L3	BLACK

DRAWING REVISION AC	REVISION BY BS	REV DATE/© DATE 26/07/2022
REQUEST NUMBER CR-0010402	APPROVED BY SN	DATE 26/07/2022
REQUEST NUMBER DESCRIPTION DRAWING UPDATED		
COPYRIGHT (PER REVISION DATE) REGAL BELOIT AMERICA, INC. ALL RIGHTS RESERVED. PROPRIETARY AND CONFIDENTIAL INFORMATION - THIS DOCUMENT IS THE PROPERTY OF REGAL BELOIT AMERICA, INC. ("OWNER") AND CONTAINS OWNER'S PROPRIETARY INFORMATION. ANY PERSON, CORPORATION OR OTHER FIRM RECEIVING IT IS DEEMED, BY RECEIVING IT, TO AGREE THAT IT, AND/OR ANY PART OF IT, SHALL NOT BE DISCLOSED TO ANY PERSON, CORPORATION OR OTHER ENTITY, DUPLICATED, AND/OR USED, EXCEPT AS EXPRESSLY APPROVED IN WRITING IN ADVANCE BY OWNER. THIS DOCUMENT SHALL BE RETURNED TO OWNER UPON REQUEST. IT MAY BE SUBJECT TO CERTAIN RESTRICTIONS UNDER APPLICABLE EXPORT CONTROL LAWS AND REGULATIONS.		

PRIMARY DIMENSIONS ARE INCH
mm DIMENSIONS IN [BRACKETS]
ARE FOR REFERENCE ONLY

DRAWN BY DA
DATE 03-26-1993
APPROVED BY TB
DATE 03-26-1993
REFERENCE
THIRD ANGLE PROJECTION

Regal Beloit America, Inc.	
DESCRIPTION CONNECTION DIAGRAM EXTERNAL - SINGLE VOLTAGE - 3Ø MOTOR	
MATERIAL	PROCESS/FINISH
SIZE A	DRAWING NUMBER EE7300
SHEET 1 OF 1	

Data Sheet

Date: 8/1/2022
 Customer: _____
 Attention: _____
 Submitted by: _____



445TSHFCD9042
 315021.002 FAN
Submittal
 Data @ 460 V

Motor Load Data

Load	0%	25%	50%	75%	100%	115%	125%	LR	
Current (Amps)	65.0	83.0	122	170	219	252	275	1,450	
Torque (ft-lb)	0.00	146	293	440	587	676	735	1,256	
RPM	1800	1798	1795	1792	1790	1,788	1788	0	
Efficiency (%)		93.0	95.8	96.2	96.5	96.5	96.2		
P.F. (%)	4.5	60.0	80.0	86.5	88.5	89.0	89.5	38.0	

Motor Speed Data

	LR	Pull-Up	BD	Rated	Idle	Information Block	
Speed (RPM)	0	900	1750	1790	1800	HP	200.0
Current (Amps)	1,450	1,160	850	219	65.0	Sync. RPM	1800
Torque (ft-lb)	1,256	1,050	1,775	587	0.00	Frame	445
						Enclosure	TEFC
						Construction	TFC
						Voltage	460 V
						Frequency	60 Hz
						Design	B
						LR Code letter	G
						Service Factor	1.15
						Temp Rise @ FL	55 ° C
						Duty	CONT
						Ambient	40 ° C
						Elevation	1,000 feet
						Rotor/Shaft wk²	81.2 Lb-Ft²
						Ref Wdg	HA32804009 NONE
						Sound Pressure @ 1M	80 dBA
						VFD Rating	CONSTANT 2:1/VARIABLE 10:1
						Outline Dwg	SS621015
						Conn. Diag	EE7300
Additional Specifications:						EQUIV CKT (OHMS / PHASE)	
						R1	R2
						0.0120	0.0070
						X1	X2
						0.0810	0.1850
						Xm	3.8340

Speed -Torque Curve

