

PRODUCT INFORMATION PACKET



Model No: 444TTGN18578
Catalog No: 444TTGN18578
100,1200,EPFC,444TCVZ,3/60/230/460

Regal and Marathon are trademarks of Regal Rexnord Corporation or one of its affiliated companies.
©2024 Regal Rexnord Corporation, All Rights Reserved. MC017097E



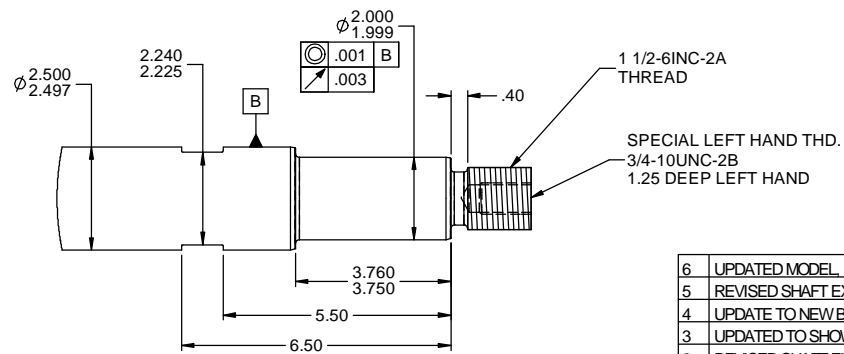
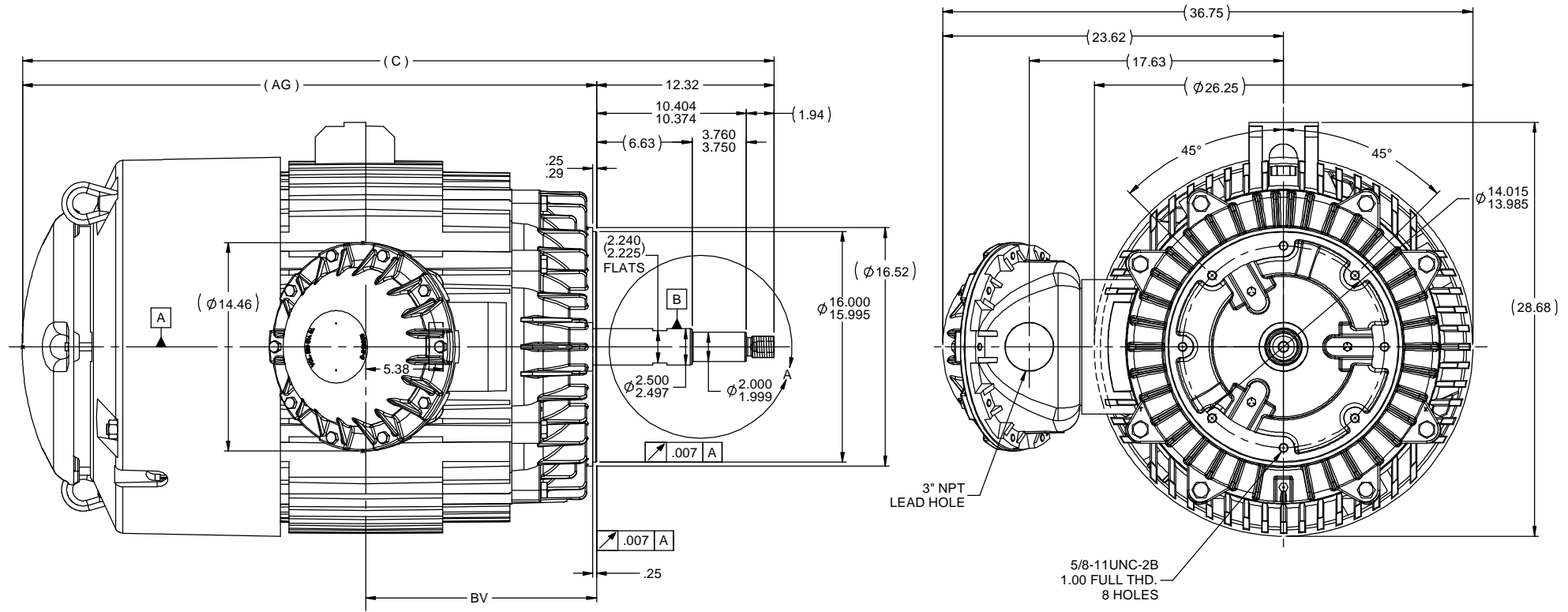
Nameplate Specifications

Phase	3	Output HP	100 Hp
Output KW	75.0 kW	Voltage	230/460 V
Speed	1188 rpm	Service Factor	1.15
Frame	444TCVZ	Enclosure	Explosion Proof Fan cooled
Thermal Protection	No Protection	Efficiency	94.5 %
Ambient Temperature	55 °C	Frequency	60 Hz
Current	252.0/126.0 A	Power Factor	79
Duty	Continuous	Insulation Class	F
Design Code	B	KVA Code	G
Drive End Bearing Size	6318	Opp Drive End Bearing Size	6316
UL	No	CSA	N
CE	N	IP Code	54
Number of Speeds	1	Hazardous Location	EXP PROOF CL I GR C&D T2A

Technical Specifications

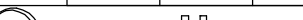

Electrical Type	Squirrel Cage Inverter Rated	Starting Method	Line Or Inverter
Poles	6	Rotation	Reversible
Resistance Main	.042 Ohms	Mounting	Round
Motor Orientation	Shaft Down	Drive End Bearing	Ball
Opp Drive End Bearing	Ball	Frame Material	Cast Iron
Shaft Type	Single Special Extension	Assembly/Box Mounting	F1/F2 CAPABLE
Outline Drawing	B-SS552137-2025	Connection Drawing	A-EE7308

This is an uncontrolled document once printed or downloaded and is subject to change without notice. Date Created:09/24/2024



- NOTES:
1. CONDUIT BOX CAN BE ROTATED IN 90° STEPS.
 2. NAMEPLATES TO BE READ FROM CONDUIT BOX SIDE OF MOTOR.

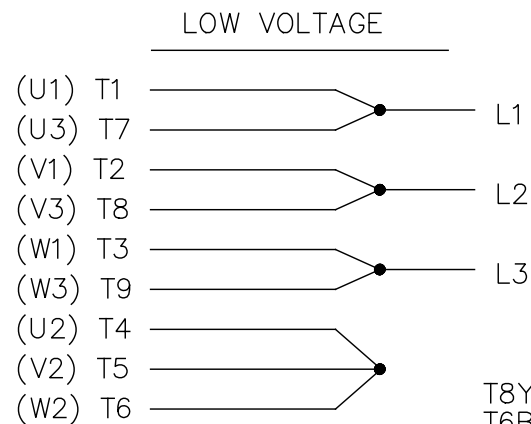
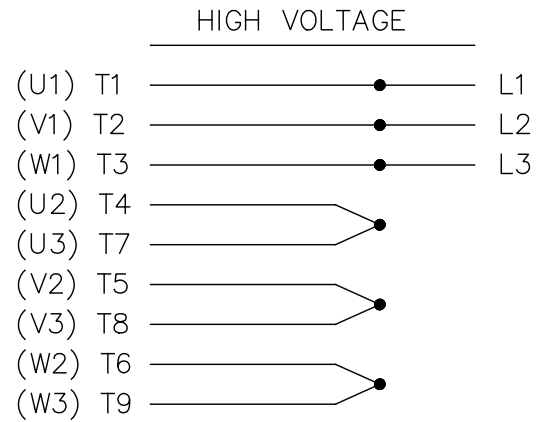
DASH	FRAME	C	AG	BV
2025	440TCVZ	52.11	39.79	16.00

6	UPDATED MODEL REVD BY DIM. WAS 15.75	MU105400	JJB 12/27/2011	MJS	TOLERANCES UNLESS SPECIFIED		DRAWN	TAT 10-10-2006
5	REVISED SHAFT EXTENSION	ISAAC 11-1324	WGJ 4/20/2011	EMH	DEC INCHES		CHK	ML 10-10-2006
4	UPDATE TO NEW BOLT-ON CBOX		RWR 05/31/2007	ML	X ±.1		APPR	SW 10-11-2006
3	UPDATED TO SHOW PIPE NIPPLE	MU78960	TJW 5/24/2007	ML	XX ±.03		TITLE	SCALE 1:6.8
2	REVISED SHAFT EXT. PER CN40781		TJW 5/23/2007	ML	XXX ±.005		440TCVZ FR. - EPFC - TGN	REF
1	UPDATE D.E. EXT. AND ADD DETAIL	CN40940	RWR 01-17-2007	ML	XXXX ±.0005		MATL	FMF MU75601
NO	REVISION		BY & DATE	CHK	ANG ±7.30"	FINISH	PAGE	OF
THIRD ANGLE PROJECTION				RFP		PREV	SIZE	DRAWING NO
				NETWORK FILE NAME		SS552137	B	SS552137
								REV 6

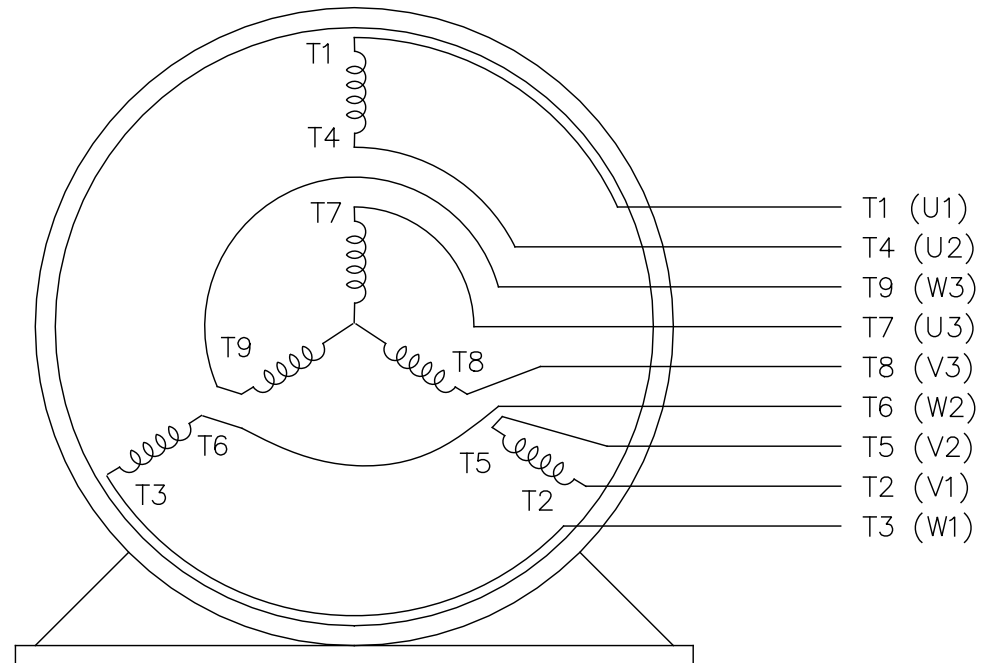
THIRD ANGLE PROJECTION

NETWORK FILE NAME SS552137

SIZE B DRAWING NO SS552137 REV 6



THREE PHASE DUAL VOLTAGE MOTOR



VIEW OF TERMINAL END

REF.
WINDING DIAGRAM

T8Y, T2Y, T2BL, T4BX, T2EC, T2G
T6BZ, T2B, T6BL, T4AV, T6B, T4B

OPTIONAL CORD CONNECTION

L1 — WHITE —
L2 — RED —
L3 — BLACK —

DRAWING REVISION	REVISION BY	DATE	TOLERANCES UNLESS OTHERWISE SPECIFIED	DRAWN BY:			
ECO	APPROVED BY	DATE	DEC. mm INCH ANGLE	AS			
ECO DESCRIPTION			.X ±2.5 ±0.11 ±0.5°	DATE:	DESCRIPTION		
NEW DRAWING			.XX ±0.51 ±0.021	02/20/2017			
COPYRIGHT KAMAN INDUSTRIAL TECHNOLOGIES INC. VENDOR IDENTIFICATION TNP ALL RIGHTS RESERVED. PROPRIETARY AND CONFIDENTIAL INFORMATION - THIS DOCUMENT IS THE PROPERTY OF VENDOR IDENTIFICATION TNP ("OWNER") AND CONTAINS OWNER'S PROPRIETARY INFORMATION. ANY PERSON, CORPORATION OR OTHER FIRM RECEIVING IT IS DEEMED, BY RECEIVING IT, TO AGREE THAT IT, AND/OR ANY PART OF IT, SHALL NOT BE DISCLOSED TO ANY PERSON, CORPORATION OR OTHER ENTITY, DUPLICATED, AND/OR USED, EXCEPT AS EXPRESSLY APPROVED IN WRITING IN ADVANCE BY OWNER. THIS DOCUMENT SHALL BE RETURNED TO OWNER UPON REQUEST. IT MAY BE SUBJECT TO CERTAIN RESTRICTIONS UNDER APPLICABLE EXPORT CONTROL LAWS AND REGULATIONS.			.XXX ±0.127 ±0.0051	APPROVED BY:	CONNECTION DIAGRA		
			.XXXX ±0.0127 ±0.00051	ST			
			REMOVE BURRS & BREAK SHARP	DATE:	3 PHASE - UAL VOLTAGE		
			EDGES .08/.38 [.003/.015]X 45°	02/20/2017			
			CORNER FILLETS R.51 [.02]	REFERENCE	MATERIAL		PROCESS/FINISH
			MACHINED SURFACES	EE7308			
			INCH 125 mm 3.2	THIRD ANGLE	SIZE DWG NO	EE7308TP	
			INCH SHOWN IN [BRACKETS]	PROJECTION	A		
						SHEET	
						1	