

PRODUCT INFORMATION PACKET



Model No: 444TTGN12578
Catalog No: 444TTGN12578
100,1200,EPFC,444TCVZ,3/60/230/460

Regal and Marathon are trademarks of Regal Rexnord Corporation or one of its affiliated companies.
©2024 Regal Rexnord Corporation, All Rights Reserved. MC017097E



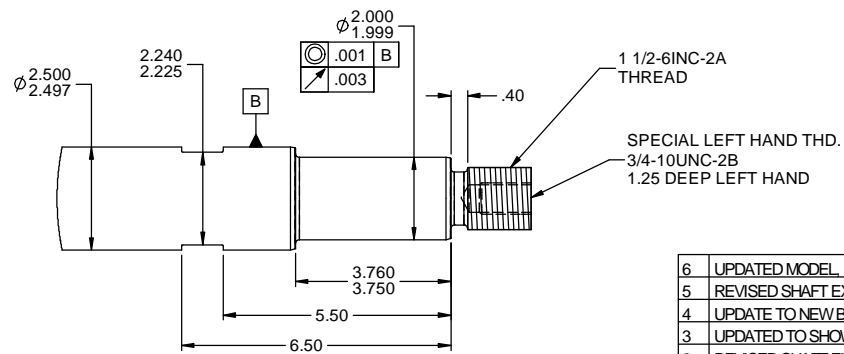
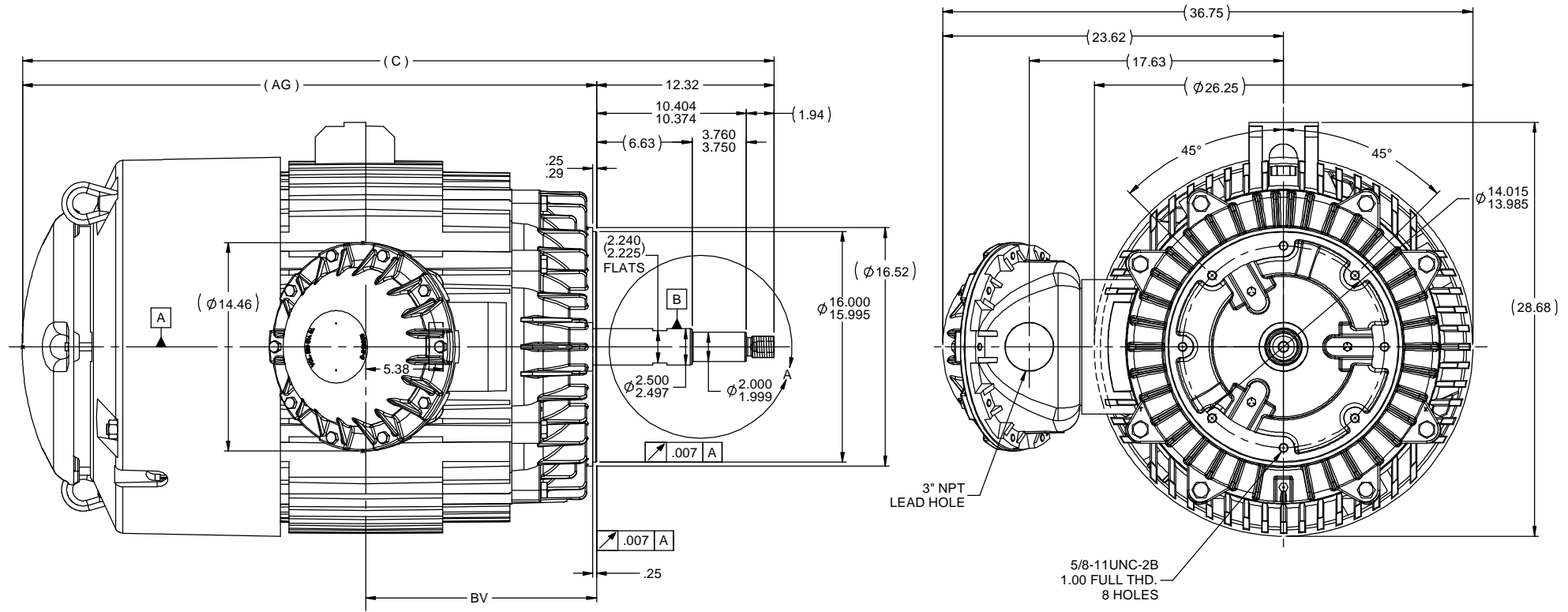
Nameplate Specifications

| | | | |
|------------------------|---------------|----------------------------|----------------------------|
| Phase | 3 | Output HP | 100 Hp |
| Output KW | 75.0 kW | Voltage | 230/460 V |
| Speed | 1190 rpm | Service Factor | 1.15 |
| Frame | 444TCVZ | Enclosure | Explosion Proof Fan cooled |
| Thermal Protection | No Protection | Efficiency | 95 % |
| Ambient Temperature | 55 °C | Frequency | 60 Hz |
| Current | 240.0/120.0 A | Power Factor | 82 |
| Duty | Continuous | Insulation Class | F |
| Design Code | B | KVA Code | G |
| Drive End Bearing Size | 6318 | Opp Drive End Bearing Size | 6316 |
| UL | No | CSA | N |
| CE | N | IP Code | 54 |
| Number of Speeds | 1 | Hazardous Location | EXP PROOF CL I GR C&D T2A |

Technical Specifications

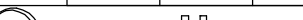

| | | | |
|-----------------------|------------------------------|-----------------------|------------------|
| Electrical Type | Squirrel Cage Inverter Rated | Starting Method | Line Or Inverter |
| Poles | 6 | Rotation | Reversible |
| Resistance Main | .042 Ohms | Mounting | Round |
| Motor Orientation | Shaft Down | Drive End Bearing | Ball |
| Opp Drive End Bearing | Ball | Frame Material | Cast Iron |
| Shaft Type | Single Special Extension | Assembly/Box Mounting | F1/F2 CAPABLE |
| Outline Drawing | B-SS552137-2025 | Connection Drawing | A-EE7308K |

This is an uncontrolled document once printed or downloaded and is subject to change without notice. Date Created:09/24/2024



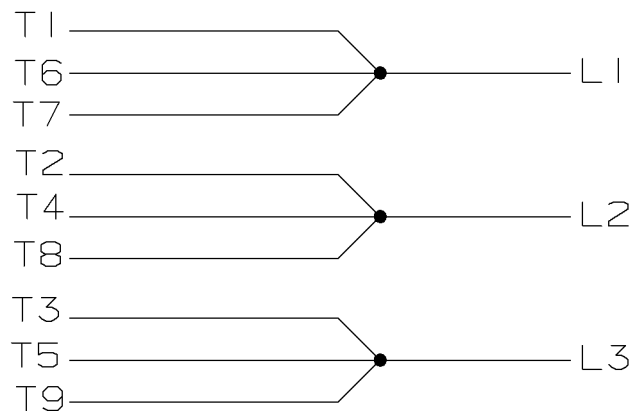
- NOTES:
1. CONDUIT BOX CAN BE ROTATED IN 90° STEPS.
 2. NAMEPLATES TO BE READ FROM CONDUIT BOX SIDE OF MOTOR.

| DASH | FRAME | C | AG | BV |
|------|---------|-------|-------|-------|
| 2025 | 440TCVZ | 52.11 | 39.79 | 16.00 |

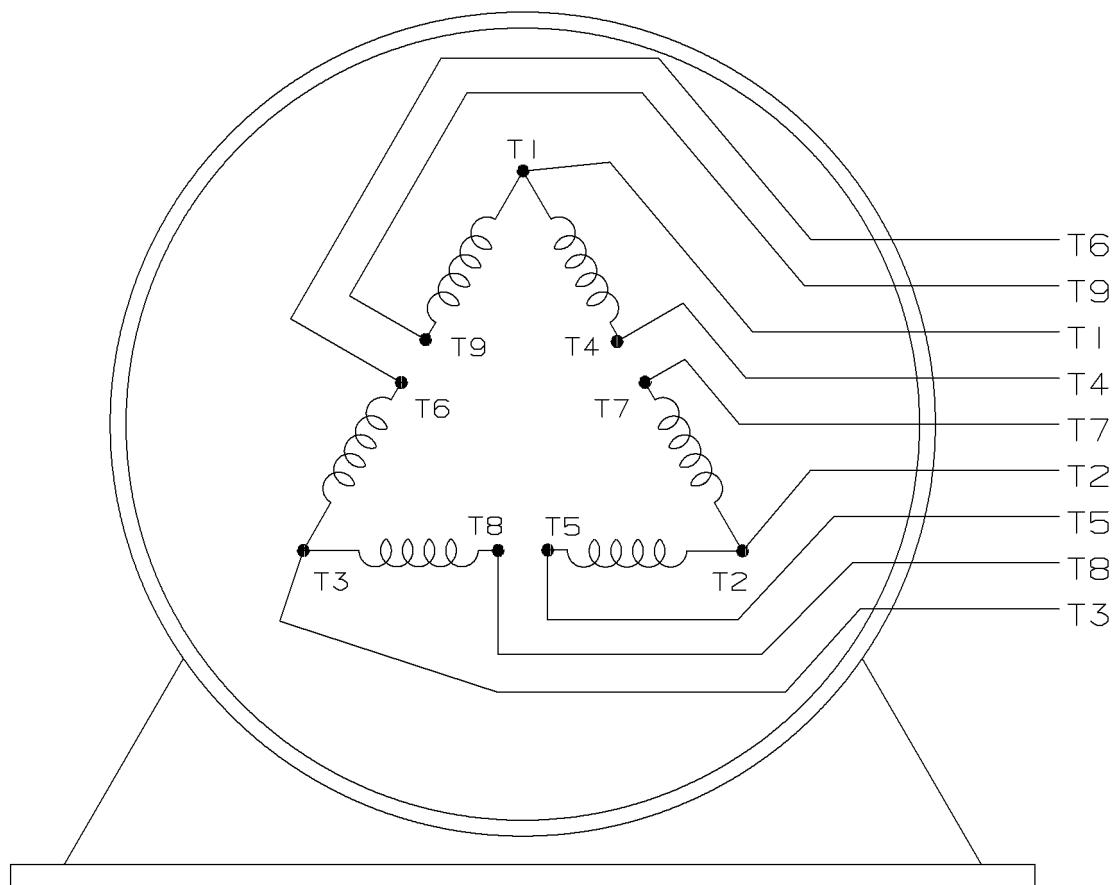
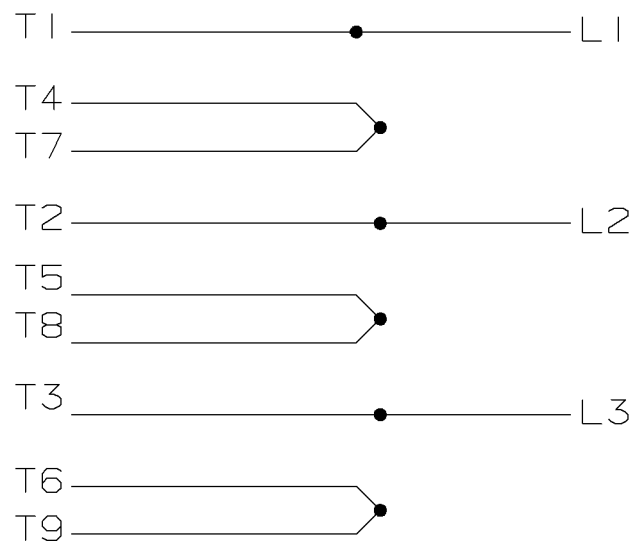
| | | | | | | | | |
|---|--------------------------------------|---------------|----------------|-------------------|-----------------------------|---|-------|----------------|
| 6 | UPDATED MODEL REVD BY DIM. WAS 15.75 | MJ105400 | JJB 12/27/2011 | MJS | TOLERANCES UNLESS SPECIFIED |  | DRAWN | TAT 10-10-2006 |
| 5 | REVISED SHAFT EXTENSION | ISAAC 11-1324 | WGJ 4/20/2011 | EMH | DEC INCHES | | CHK | ML 10-10-2006 |
| 4 | UPDATE TO NEW BOLT-ON CBOX | | RWR 05/31/2007 | ML | X ±.1 | | APPR | SW 10-11-2006 |
| 3 | UPDATED TO SHOW PIPE NIPPLE | MJ78960 | TJW 5/24/2007 | ML | XX ±.03 | | SCALE | 1:6.8 |
| 2 | REVISED SHAFT EXT. PER CN40781 | | TJW 5/23/2007 | ML | XXX ±.005 | | REF | |
| 1 | UPDATE D.E. EXT. AND ADD DETAIL | CN40940 | RWR 01-17-2007 | ML | XXXX ±.0005 | | MATL | MJ75601 |
| NO | REVISION | | BY & DATE | CHK | ANG ±7.30" | FINISH | PAGE | OF |
| THIRD ANGLE PROJECTION | | | | RFP | | PREV | SIZE | DRAWING NO |
|  | | | | NETWORK FILE NAME | | SS552137 | B | SS552137 |
| | | | | | | | | REV |
| | | | | | | | | 6 |

LOW VOLTAGE


A- EE7308K-LN



HIGH VOLTAGE



VIEW OF TERMINAL END

| | | | | | | | | | | | |
|-----|------------|------------------------------------|------|---|---|---------------|--|-----------|-----|-----------------------------|--|
| | | | | <div></div> | ✓ <div>UNLESS OTHERWISE SPECIFIED DIMENSIONS ARE IN INCHES TOL. ON XX± .02 XXX± .005 XXXX± .0005 ANGLES± 7°30"</div> | | | | | | |
| 2 | 08-09-1999 | RE-ISSUE, ADDED '-' TO PART NUMBER | BLR | | MAX. SURFACE ROUGHNESS UNLESS OTHERWISE NOTED | | | DRAWN BY | TRB | 07-15-1999 | |
| | | | | | FINISH | | | CHKD BY | ML | 07-15-1999 | |
| 1 | 06-18-1999 | NEW DRAWING | TRB | | MATERIAL | | | APPD BY | GK | 07-20-1999 | |
| REV | DATE | CHANGE | NAME | PART NAME CONNECTION DIAGRAM DELTA CONN. - 3Ø - 9 LEADS | | | | | | DRWG NO A - EE7308K - LN | |
| | | | | | PURCHASED | CADD FILE NO. | | EE7308KLN | | | |