

PRODUCT INFORMATION PACKET



Model No: 444TTGN11033
Catalog No: 444TTGN11033
125,1800,EPFC,444TCVZ,3/60/460

Regal and Marathon are trademarks of Regal Rexnord Corporation or one of its affiliated companies.
©2024 Regal Rexnord Corporation, All Rights Reserved. MC017097E



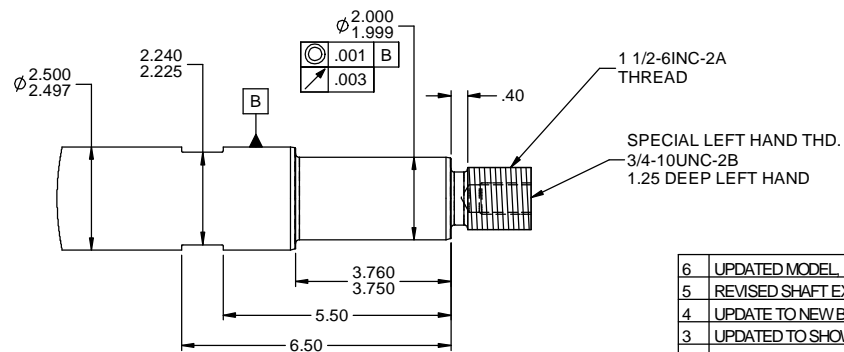
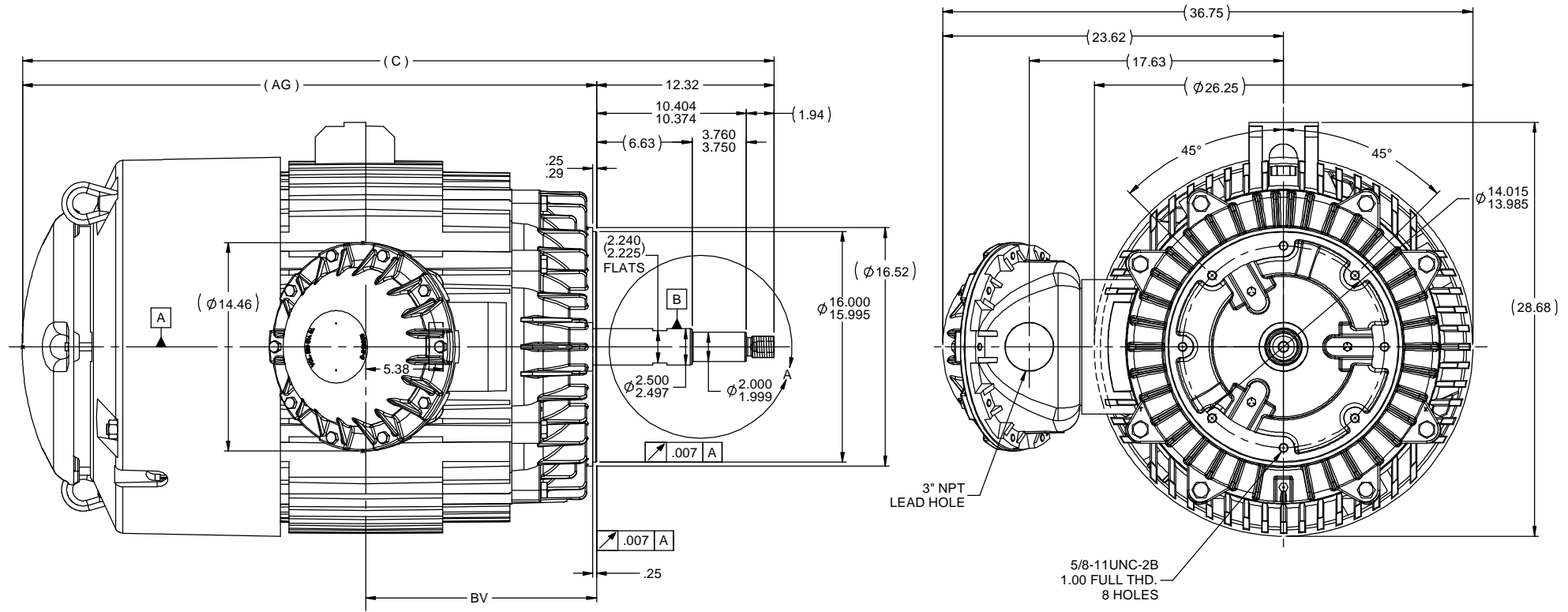
Nameplate Specifications

Phase	3	Output HP	125 Hp
Output KW	93.0 kW	Voltage	460 V
Speed	1785 rpm	Service Factor	1.15
Frame	444TCVZ	Enclosure	Explosion Proof Fan cooled
Thermal Protection	No Protection	Efficiency	95 %
Ambient Temperature	55 °C	Frequency	60 Hz
Current	143.0 A	Power Factor	86
Duty	Continuous	Insulation Class	F
Design Code	B	KVA Code	G
Drive End Bearing Size	6318	Opp Drive End Bearing Size	6316
UL	No	CSA	N
CE	N	IP Code	55
Number of Speeds	1	Hazardous Location	EXP PROOF CL I GR C&D T2A

Technical Specifications

Electrical Type	Squirrel Cage Inverter Rated	Starting Method	Line Or Inverter
Poles	4	Rotation	Reversible
Resistance Main	.0385 Ohms	Mounting	Round
Motor Orientation	Shaft Down	Drive End Bearing	Ball
Opp Drive End Bearing	Ball	Frame Material	Cast Iron
Shaft Type	Single Special Extension	Assembly/Box Mounting	F1/F2 CAPABLE
Outline Drawing	B-SS552137-2025	Connection Drawing	A-EE7300U

This is an uncontrolled document once printed or downloaded and is subject to change without notice. Date Created:09/24/2024

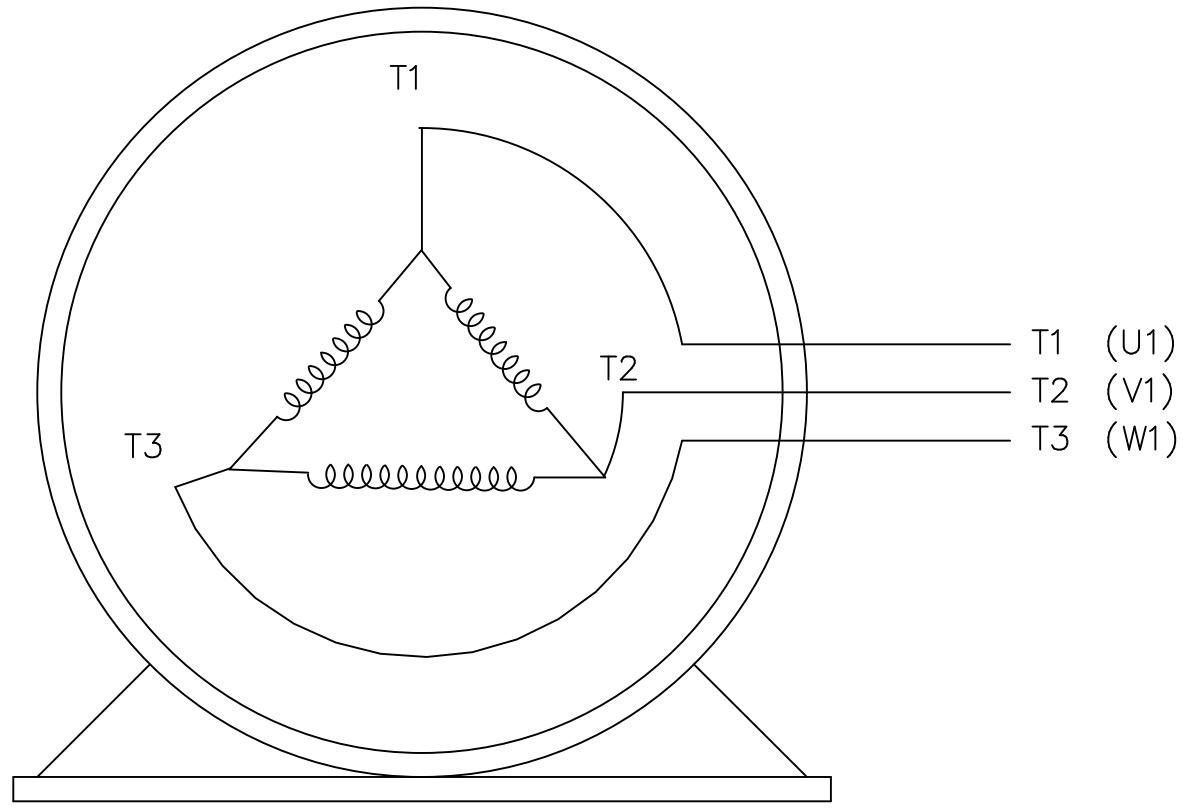
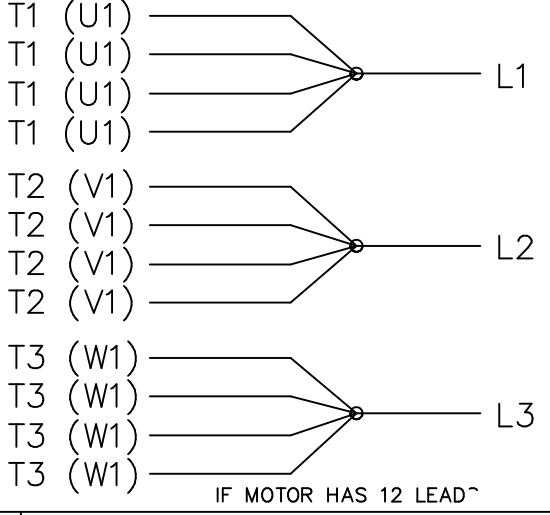
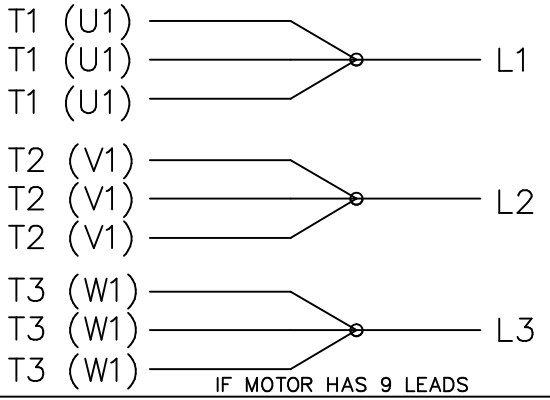
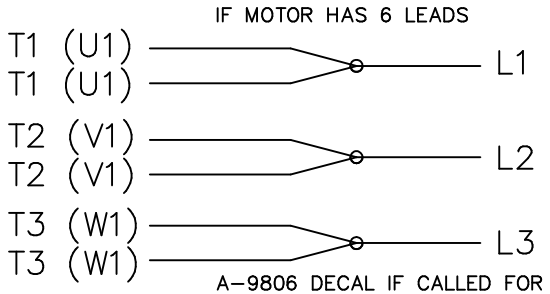


DETAIL A
SCALE 1 : 3


- NOTES:
 1. CONDUIT BOX CAN BE ROTATED IN 90° STEPS.
 2. NAMEPLATES TO BE READ FROM CONDUIT BOX SIDE OF MOTOR.

DASH	FRAME	C	AG	BV
2025	440TCVZ	52.11	39.79	16.00

6	UPDATED MODEL REVD BV DIM. WAS 15.75 MU105400	JJB 12/27/2011	MUS	TOLERANCES UNLESS SPECIFIED		DRAWN TAT 10-10-2006 CHK ML 10-10-2006 APPR SW 10-11-2006
5	REVISED SHAFT EXTENSION ISAAC 11-1324	VGJ 4/20/2011	EMH	DEC INCHES		
4	UPDATE TO NEW BOLT-ON CBOX	RWR 05/31/2007	ML	X ±.1	TITLE OUTLINE - VERT. - SPL EXT. 440TCVZ FR. - EPFC - TGN	SCALE 1:6.8 REF FMF MU75601 PAGE OF
3	UPDATED TO SHOW PIPE NIPPLE MU78960	TJW 5/24/2007	ML	XX ±.03		
2	REVISED SHAFT EXT. PER CN40781	TJW 5/23/2007	ML	XXX ±.005		
1	UPDATE D.E. EXT. AND ADD DETAIL CN40940	RWR 01-17-2007	ML	XXXX ±.0005		
NO	REVISION	BY & DATE	CHK	ANG ±7.30"	FINISH	
THIRD ANGLE PROJECTION					PREV	SIZE B
					NETWORK FILE NAME SS552137	DRAWING NO SS552137
						REV 6



VIEW OF TERMINAL END

				TOLERANCES UNLESS SPECIFIED			DRAWN KL 12-06-2000				
				DEC.	INCHES		CHK	DJK	12-06-2000		
				.X	±.1		APPD	DJK	12-06-2000		
				.XX	±.02		SCALE				
2	ADDED TABLES	CN39272	RJW 06-03-2005	ML	.XXX ±.005	TITLE EXTERNAL CONNECTION DIAGRAM 3Ø SINGLE VOLTAGE DELTA			REF		
1	NEW DRAWING	MU34873	KL 12-06-2000		.XXXX ±.0005	MAT'L.			FMF		
NO.	REVISION	BY & DATE	CHK	ANG	±7'30"	FINISH			PREV		
THIS DRAWING IN DESIGN AND DETAIL IS OUR PROPERTY AND MUST NOT BE USED EXCEPT IN CONNECTION WITH OUR WORK ALL RIGHTS OF DESIGN AND INVENTION ARE RESERVED THIS IS AN ELECTRONICALLY GENERATED DOCUMENT – DO NOT SCALE THIS PRINT				RFP		CAD FILE EE7300U_LN		SIZE	DRAWING NO.	PAGE OF	REV.
				DIST LE				A	EE7300U-LN		2