

PRODUCT INFORMATION PACKET

marathon®
Motors

Model No: 444TTFS7262

Catalog No: Y392

XRI®-SD Other Purpose Motor, 100 & 25 HP, 3 Ph, 60 & 60 Hz, 460 & 460 V, 1800 & 1800 RPM,
444T Frame, TEFC



Regal and Marathon are trademarks of Regal Rexnord Corporation or one of its affiliated companies.

©2023 Regal Rexnord Corporation, All Rights Reserved. MC017097E

RegalRexnord

Nameplate Specifications

Phase	3	Output HP	100 & 25 Hp
Output KW	75.0 & 18.7 kW	Voltage	460 & 460 V
Speed	1785 & 890 rpm	Service Factor	1.15 & 1.15
Frame	444T	Enclosure	Totally Enclosed Fan Cooled
Thermal Protection	No Protection	Efficiency	94.1 & 92.4 %
Ambient Temperature	40 °C	Frequency	60 & 60 Hz
Current	113 & 37.5 A	Power Factor	88
Duty	Continuous	Insulation Class	F
Design Code	1VT	KVA Code	H
Drive End Bearing Size	6318	Opp Drive End Bearing Size	6316
UL	Recognized	CSA	Y
CE	Y	IP Code	55
Number of Speeds	2		


Technical Specifications

Electrical Type	Squirrel Cage Induction Run	Starting Method	Across The Line
Poles	4/8	Rotation	Reversible
Resistance Main	.051 Ohms	Mounting	Rigid Base
Motor Orientation	Horizontal	Drive End Bearing	Ball
Opp Drive End Bearing	Ball	Frame Material	Cast Iron
Shaft Type	T	Overall Length	41.27 in
Frame Length	18.50 in	Shaft Diameter	3.375 in
Shaft Extension	8.75 in	Assembly/Box Mounting	F1/F2 Capable
Outline Drawing	B-SS508879-1850	Connection Drawing	A-EE7322



F2 VIEW

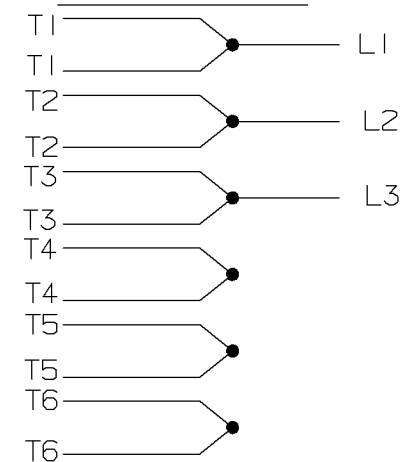
a

 Regal Beloit America, Inc.	
DESCRIPTION <div style="text-align: center;"> <h1>OUTLINE</h1> <h2>440T FR. - TEFC - TAPPED LEAD HOLE</h2> </div>	
MATERIAL	PROCESS/FINISH
SIZE <div style="font-size: 2em;">B</div>	DRAWING NUMBER <div style="font-size: 2em;">SS508879</div>
SHEET <div style="text-align: right;">1 OF 1</div>	

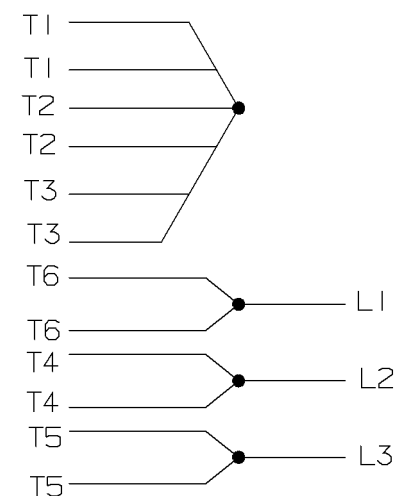
A- EE7322

FOR DUAL LEADS

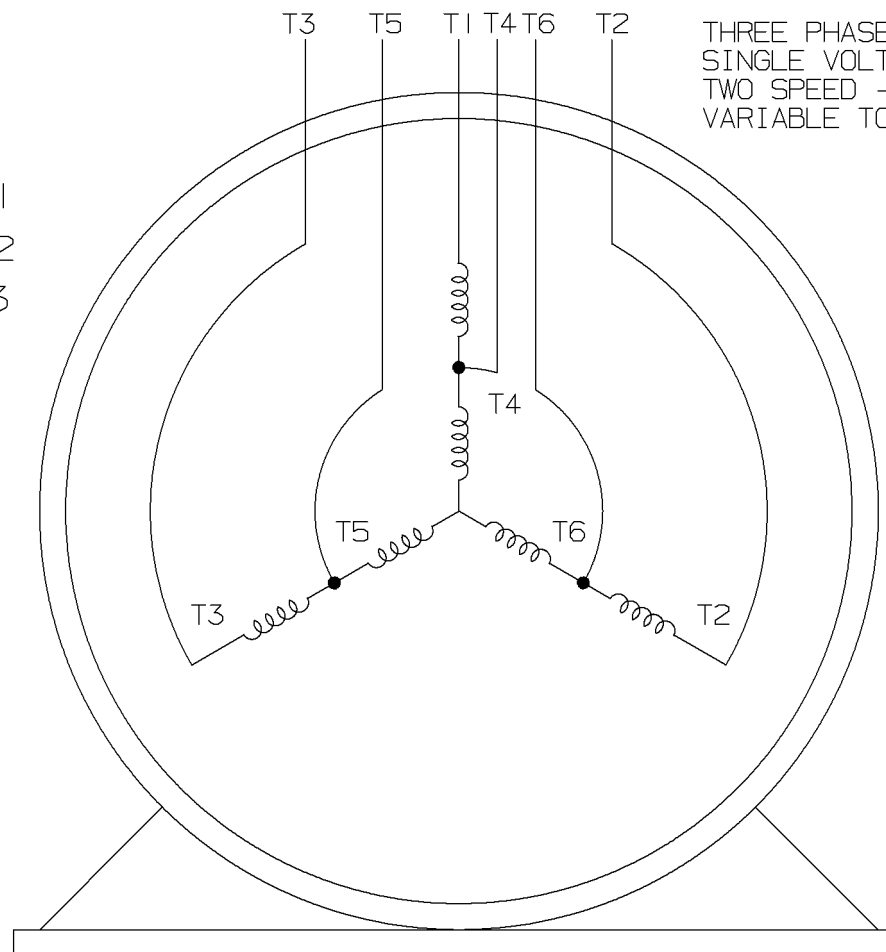
LOW SPEED



HIGH SPEED



THREE PHASE MOTOR
SINGLE VOLTAGE
TWO SPEED - SGL. WDG.
VARIABLE TORQUE

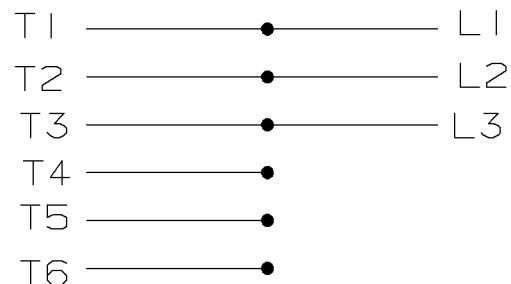


VIEW OF TERMINAL END

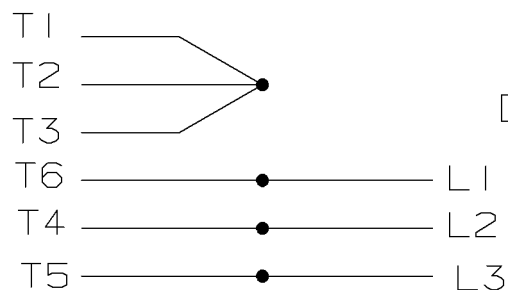
T612C


T48B

LOW SPEED



HIGH SPEED



				✓ MAX. SURFACE ROUGHNESS UNLESS NOTED OTHERWISE	UNLESS OTHERWISE SPECIFIED DIMENSIONS ARE IN INCHES TOL. ON XX± XXX±.005 XXXX±.0005 ANGLES±		
				MATL SPEC			DRAWN BY PGK 12-26-1996
				FINISH			CHKD BY ML 01-07-1997
7	01-08-1997	REDRAWN ON CADD CN 24000-27	PGK	REFERENCE DRW.	WAUSAU, WISCONSIN 54401		APPD BY TB 01-07-1997
REV	DATE	CHANGE	NAME	PART NAME CONNECTION DIAGRAM 3Ø - SINGLE VOLTAGE - 2 SPEED			DRWG NO A - EE7322

SHOP BOOK

PURCHASED

DISTRIBUTION - WA - LB - WP - LM - BR

CADD FILE NO.

EE7322

CERTIFICATION DATA SHEET

Model#: 444TTFS7262 AP
CONN. DIAGRAM: A-EE7322
OUTLINE: B-SS508879-1850

WINDING#: T444(4-8)21 NONE 1
ASSEMBLY: F1/F2 CAPABLE

TYPICAL MOTOR PERFORMANCE DATA

HP	KW	SYNC. RPM	F.L. RPM	FRAME	ENCLOSURE	KVA CODE	DESIGN
100&25	75&18.7	900	1785&890	444T	TEFC	H	1VT

PH	Hz	VOLTS	FL AMPS	START TYPE	DUTY	INSL	S.F	AMB°C	ELEVATION
3	60/60	460	113&37.5	ACROSS THE LINE	CONTINUOUS	F1	1.15/1.15	40	3300

FULL LOAD EFF: 94.1&92.4	3/4 LOAD EFF: 91.7	1/2 LOAD EFF: 89.5	GTD. EFF	ELEC. TYPE	NO LOAD AMPS
FULL LOAD PF: 88&68	3/4 LOAD PF: 63	1/2 LOAD PF: 53	90.9	SQ CAGE IND RUN	18.7

F.L. TORQUE	LOCKED ROTOR AMPS	L.R. TORQUE	B.D. TORQUE	F.L. RISE°C
147 LB-FT	165	175 LB-FT 119	290 LB-FT 197	72

SOUND PRESSURE @ 3 FT.	SOUND POWER	ROTOR WK^2	MAX. WK^2	SAFE STALL TIME	STARTS /HOUR	APPROX. MOTOR WGT
62 dBA	72 dBA	43.5 LB-FT^2	- LB-FT^2	- SEC.	-	1800 LBS.

*** SUPPLEMENTAL INFORMATION ***

DE BRACKET TYPE	ODE BRACKET TYPE	MOUNT TYPE	ORIENTATION	SEVERE DUTY	HAZARDOUS LOCATION	DRIP COVER	SCREENS	PAINT
STANDARD	STANDARD	RIGID	HORIZONTAL	PREMIUM SEVERE DUTY	NONE	FALSE	NONE	BLUE (EPOXY)

BEARINGS		GREASE	SHAFT TYPE	SPECIAL DE	SPECIAL ODE	SHAFT MATERIAL	FRAME MATERIAL
DE	OPE						
BALL	BALL						
6318	6316	POLYREX EM	T	NONE	NONE	1045 HOT ROLLED (C-204)	CAST IRON

THERMO-PROTECTORS				THERMISTORS	CONTROL	SPACE /n HEATERS
THERMOSTATS	PROTECTORS	WDG RTDs	BRG RTDs			
NONE	NOT	NONE	NONE	NONE	FALSE	NONE VOLTS

If Inverter equals NONE, contact factory for further information

* N O T E S *	INVERTER TORQUE: NONE		
	INV. HP SPEED RANGE: NONE		
	ENCODER: NONE		
	NONE NONE PPR		
	BRAKE: NONE NONE		
	NONE P/N NONE		
	NONE NONE		
	- FT-LB	NONE V	NONE Hz

DATE: 06/21/2017 04:37:10 AM
 FORM 3531 REV.3 02/07/99
 ** Subject to change without notice.


MARATHON ELECTRIC CORPORATION

TYPICAL PERFORMANCE CURVE for AC MOTOR

Customer

Curve at

460

Volts

 HP 100&25

 PHASE 3

 Model No 444TTFS7262
60

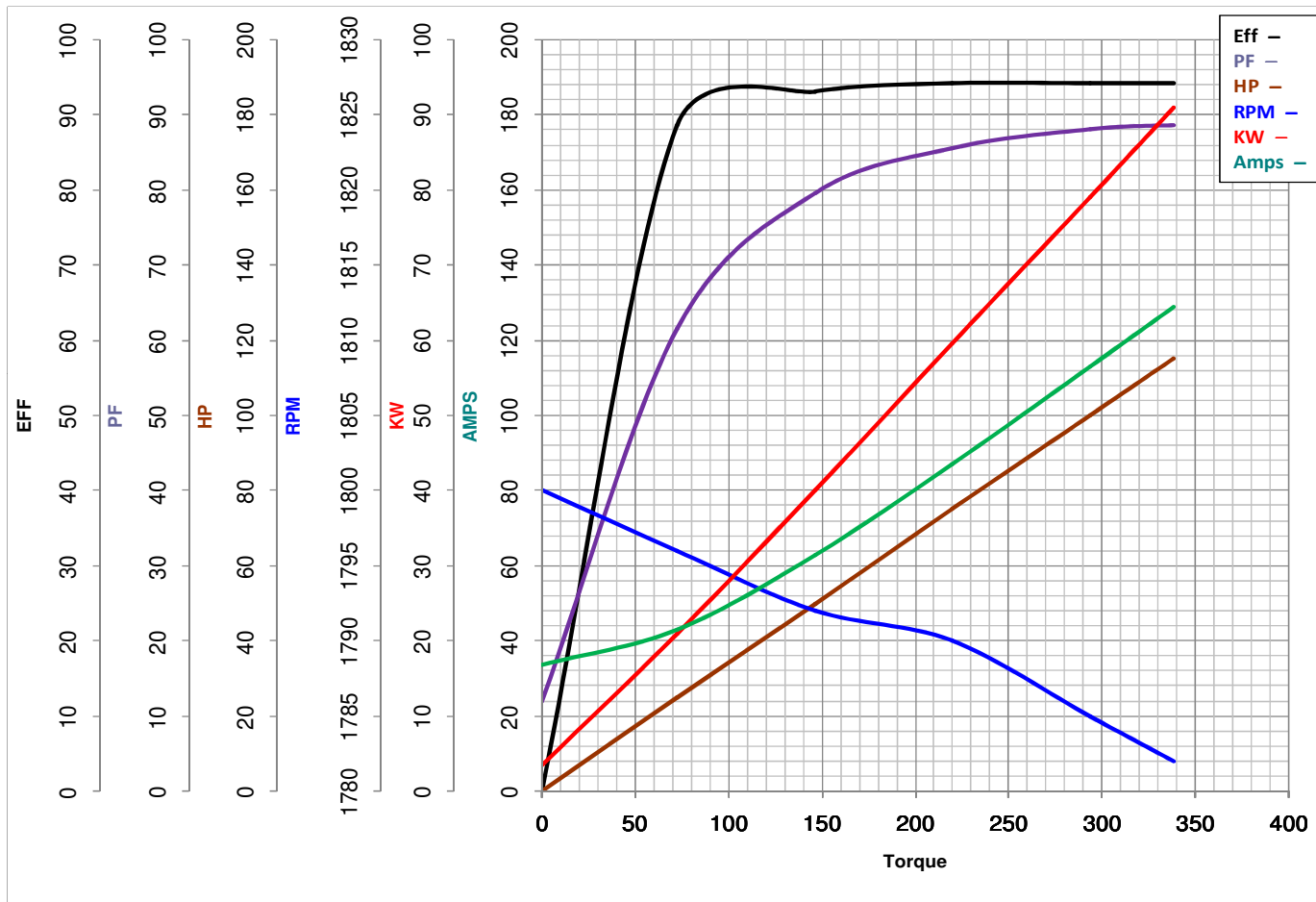
HZ

 VOLTS 460&460
100

HP

 Catalog No Y392

 HZ 60&60

 RPM 1785&890


Torque in LB-FT

FL TORQUE 294 LB-FT
 BD TORQUE 865.0 LB-FT
 LR TORQUE 505 LB-FT

FL AMPS 113
 PU TORQUE 455.0 LB-FT
 LR AMPS 855

WINDING T444(4-8)21-1

Date 1/17/2019