

PRODUCT INFORMATION PACKET



Model No: 444TTFS6044

Catalog No: E316

125 HP General Purpose Motor, 3 phase, 1800 RPM, 575 V, 444T Frame, TEFC
Three Phase TEFC Motors



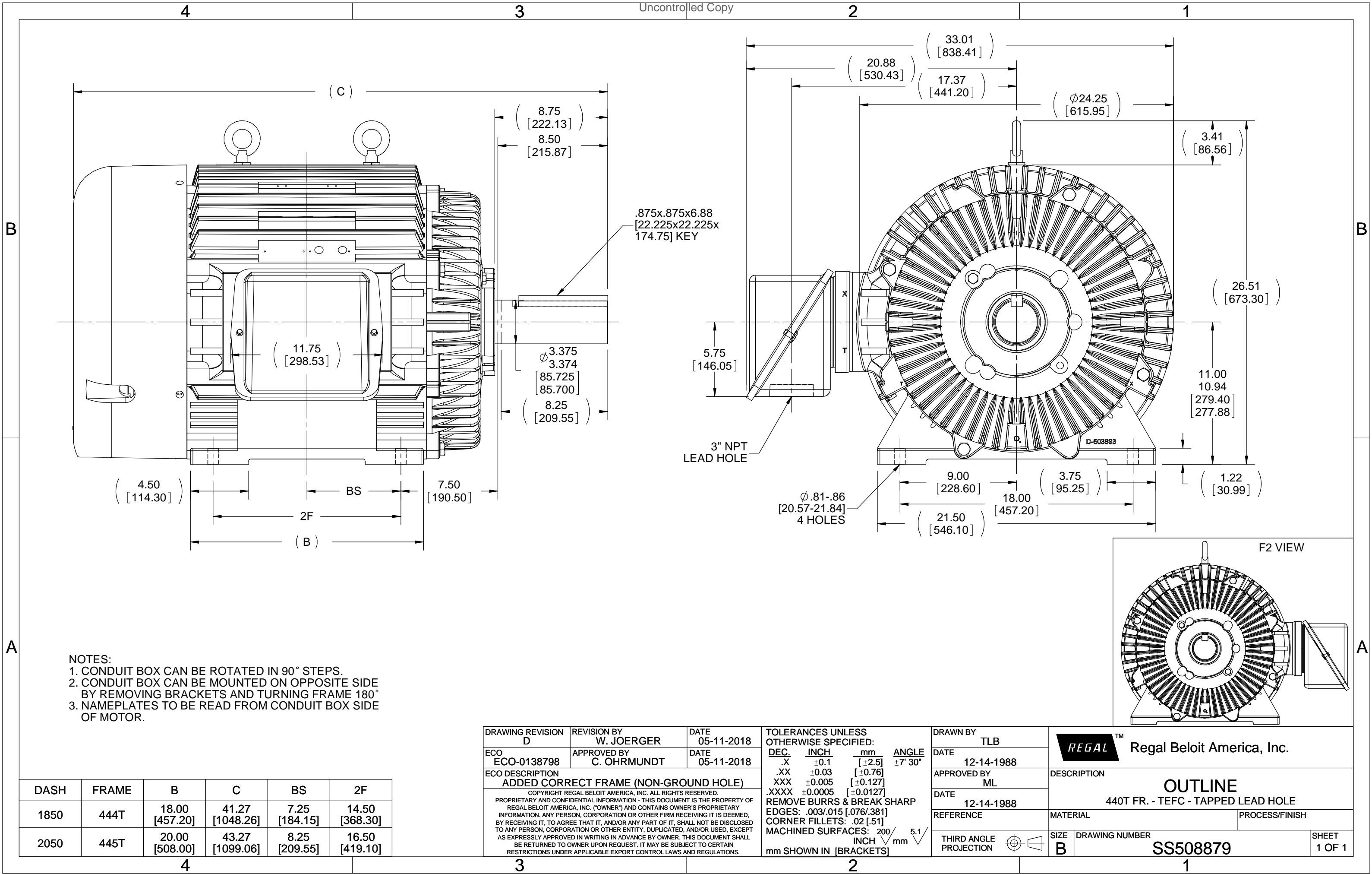
Nameplate Specifications

| | | | |
|------------------------|------------|----------------------------|-----------------------------|
| Output HP | 125 Hp | Output KW | 93.0 kW |
| Frequency | 60 Hz | Voltage | 575 V |
| Current | 113.0 A | Speed | 1780 rpm |
| Service Factor | 1.15 | Phase | 3 |
| Efficiency | 95.4 % | Power Factor | 86 |
| Duty | Continuous | Insulation Class | F |
| Design Code | B | KVA Code | G |
| Frame | 444T | Enclosure | Totally Enclosed Fan Cooled |
| Thermal Protection | No | Ambient Temperature | 40 °C |
| Drive End Bearing Size | 6318 | Opp Drive End Bearing Size | 6316 |
| UL | Recognized | CSA | Y |
| CE | Y | IP Code | 43 |

Technical Specifications

| | | | |
|-----------------------|-----------------------------|-----------------------|-----------------|
| Electrical Type | Squirrel Cage Induction Run | Starting Method | Part Wdg Start |
| Poles | 4 | Rotation | Reversible |
| Resistance Main | .038 Ohms | Mounting | Rigid base |
| Motor Orientation | Horizontal | Drive End Bearing | Ball |
| Opp Drive End Bearing | Ball | Frame Material | Cast Iron |
| Shaft Type | T | Overall Length | 41.27 in |
| Frame Length | 18.50 in | Shaft Diameter | 3.375 in |
| Shaft Extension | 8.75 in | Assembly/Box Mounting | F1/F2 CAPABLE |
| Connection Drawing | A-EE7341C | Outline Drawing | B-SS508879-1850 |

This is an uncontrolled document once printed or downloaded and is subject to change without notice. Date Created:05/01/2021



THREE PHASE – PART WINDING START DELTA – 6 LEADS

START

CONNECT T1 TO LINE 1
CONNECT T2 TO LINE 2
CONNECT T3 TO LINE 3
T7–T8–T9 OPEN

RUN

CONNECT T1&T7 TO LINE 1
CONNECT T2&T8 TO LINE 2
CONNECT T3&T9 TO LINE 3

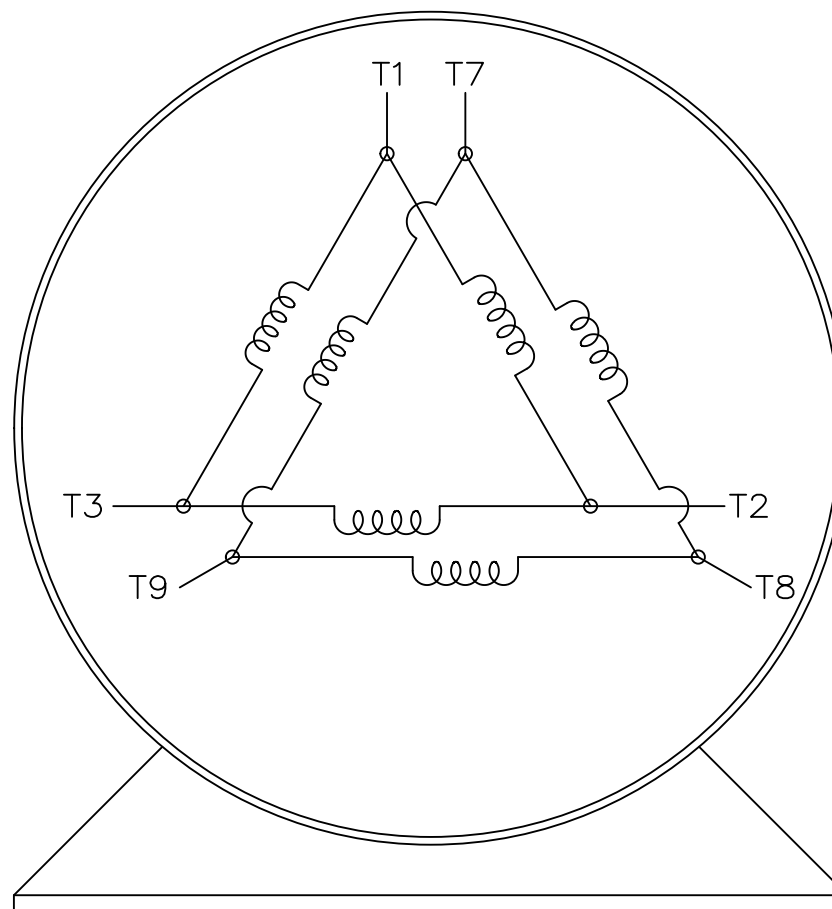
IF MOTOR HAS 2 T'S

START


CONNECT T1,T1 TO LINE 1
CONNECT T2,T2 TO LINE 2
CONNECT T3,T3 TO LINE 3
T7,T7–T8,T8–T9,T9 OPEN

RUN

CONNECT T1,T1&T7,T7 TO LINE 1
CONNECT T2,T2&T8,T8 TO LINE 2
CONNECT T3,T3&T9,T9 TO LINE 3



VIEW OF TERMINAL END

| | | | TOLERANCES UNLESS SPECIFIED | |  REGAL-BELOIT CORPORATION | DRAWN BLR 03-09-1998 | | |
|----------------------------------------------------------------------------------------------------------------------------------------------------------------------------------------------------------------------------------|--------------------------------------|----------------|--------------------------------|--------|-----------------------------------------------------------------------------------------------------------------------|------------------------------------------|-------------|------------|
| | | | DEC. | INCHES | | CHK | ML | 03-23-1998 |
| | | | .X | ± | – | APPD | GK | 03-23-1998 |
| | | | .XX | ± | – | SCALE 1=1 | | |
| E | NOTE ADDED FOR 2 T'S | NAR 17-12-2020 | RC | .XXX | ± | TITLE CONNECTION DIAGRAM 3ø – 6 LEADS | | |
| D | RE-DRAWN WITH REGAL LOGO ECO-0110493 | WGJ 09-30-2016 | EMH | .XXXX | ± | MAT'L. | | |
| NO. | REVISION | BY & DATE | CHK | ANG | ± | FINISH | | |
| THIS DRAWING IN DESIGN AND DETAIL IS OUR PROPERTY AND MUST NOT BE USED EXCEPT IN CONNECTION WITH OUR WORK ALL RIGHTS OF DESIGN AND INVENTION ARE RESERVED THIS IS AN ELECTRONICALLY GENERATED DOCUMENT – DO NOT SCALE THIS PRINT | | | RFP | | CAD FILE EE7341C | SIZE | DRAWING NO. | PAGE OF |
| | | | DIST | | | A | EE7341C | REV. E |